

Lampropeltis triangulum

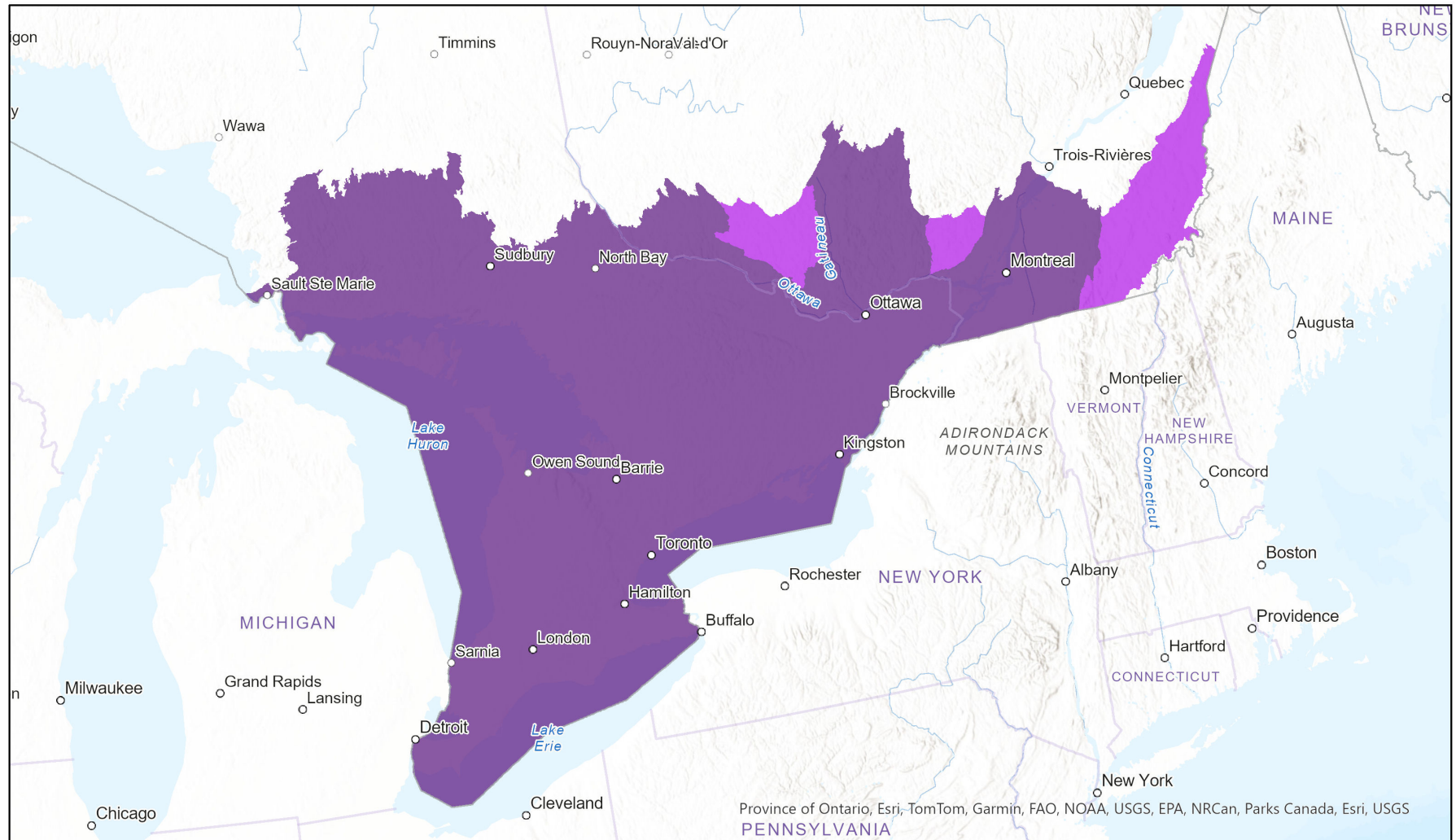


- Present
- Presence Expected
- Historical

Ecosystem-based Automated Range (EBAR)

Date Generated: March 11, 2025; Version: 1.0; Stage: Expert Reviewed (National); Scope: Canadian

Synonyms Used: None



0 130 260 km
Map centre: 77.9331° W 44.6839° N
© NatureServe Canada 2020 under CC BY 4.0
EBAR is relatively coarse scale data and not intended for all applications and analysis. Please see full disclaimer in metadata.

Input Records - 6 8Trees, 64 BISON, 529 GBIF, 4634 iNaturalist.ca, 644 iNaturalist.ca (original coordinates for obscured records), 603 iNaturalist.org, 656 ON Element Occurrences, 8806 ON Observations and Source Features, 271 QC Element Occurrences, 31 QC Ranges of Vertebrates, 58 VertNet; Expert Reviews - Jeff Hathaway, 2 Anonymous

Ecosystem-based Automated Range (EBAR) Metadata

Species

National Scientific Name:	<i>Lampropeltis triangulum</i> (Lacepède, 1789)
Scientific Name Reference:	Crother, B. I. (editor). 2017. Scientific and standard English names of amphibians and reptiles of North America north of Mexico, with comments regarding confidence in our understanding. 8th edition. SSAR Herpetological Circular 43:1-104. [Updates in SSAR North American Species Names Database at: https://ssarherps.org/cndb]
National English Name:	Eastern Milksnake
National French Name:	Couleuvre tachetée
Element National ID:	960859
Element Global ID:	960858 (go to NatureServe Explorer)
Element Code:	ARADB19080
Endemism Type:	N
Canadian COSEWIC Name:	
Canadian COSEWIC ID:	714

Rank/Status

Global Rank:	G5 (reviewed April 13, 2016)
National Rank (Canada):	N3 (reviewed 2017)
Subnational Ranks (Canada):	ON=S4, QC=S3
National Rank (United States):	N5 (reviewed 2016)
Subnational Ranks (United States):	AL=SNR, CT=S5, DC=S1, DE=S1, GA=S2, IA=S4, IL=SNR, IN=S4, KY=S5, LA=S2, MA=S5, MD=S4, ME=S5, MI=S5, MN=S4, MO=S5, MS=S3, NC=S3, NH=S5, NJ=S4, NY=S5, OH=SNR, PA=S5, RI=S5, SC=S2, TN=S5, VA=S5, VT=S5, WI=S4, WV=S5
National Rank (Mexico):	None
Subnational Ranks (Mexico):	None
Canadian SARA Status:	Special Concern/Préoccupante (January 12, 2005)
Canadian COSEWIC Status:	Special Concern (May 02, 2014)
US ESA Status:	None

Range Map

Date Generated:	March 11, 2025
Version:	1.0
Stage:	Expert Reviewed (National)
Scope:	Canadian
Metadata:	<p>Primary Species - <i>Lampropeltis triangulum</i> (Lacepède, 1789)</p> <p>Input Records - 6 8Trees, 64 BISON, 529 GBIF, 4634 iNaturalist.ca, 644 iNaturalist.ca (original coordinates for obscured records), 603 iNaturalist.org, 656 ON Element Occurrences, 8806 ON Observations and Source Features, 271 QC Element Occurrences, 31 QC Ranges of Vertebrates, 58 VertNet; Expert Reviews - Jeff Hathaway, 2 Anonymous</p>
Comments:	<p>None</p> <p>Please see spatial data for Ecoshape-level reviewer comments.</p>
Disclaimer:	<p>Please review our methods document before using EBAR.</p> <p>EBAR range data are relatively coarse scale and appropriate for screening and education purposes, but are not intended for all types of applications and analysis.</p> <p>The absence of data in any geographic areas does not necessarily mean that a species is not present.</p> <p>An ecoshape with a presence value does not necessarily mean that a species is present throughout the entire geographic area.</p>
Presence Definitions:	<p>(Please see Comments above for any exceptions)</p> <p>Present - the species is found within the ecoshape based on species observation data, Element Occurrences, Source Features, Canadian Federal Critical Habitat, or expert opinion.</p> <p>Presence Expected - expert opinion the species may be present, or the ecoshape overlapped with a range estimate or a habitat suitability model.</p> <p>Historical - all species occurrence data within the ecoshape contains observation data greater than 40 years old or an Element Occurrence (EO) that was ranked as Extirpated or Historical (EO Rank of H, H?, X or X?), or expert opinion that the species is extirpated or historical.</p>
Usage Type Definitions:	<p>(Please see Comments above for any exceptions)</p> <p>Breeding - the species is thought to breed within the ecoshape based on eBird Breeding and Behaviour Codes or expert opinion.</p> <p>Possible Breeding - the species is probably or possibly breeding within the ecoshape based on eBird, BBA or jurisdiction Breeding and Behaviour Codes, or on expert opinion.</p>
Map Projection:	North America Albers Equal Area Conic (WKID 4269)

Credits

Suggested Citation:	NatureServe Canada, 2020. Ecosystem-based Automated Range (EBAR) for <i>Lampropeltis triangulum</i> , Version 1.0, Expert Reviewed (National) (Canadian Scope). Ottawa, Canada. Retrieved from [insert url] on [insert date]
License:	Ecosystem-based Automated Range (EBAR) Project, Copyright NatureServe Canada 2024 under CC BY 4.0 (creativecommons.org/licenses/by/4.0/)
Project Website:	www.natureserve.org/canada/ebars
Contact:	ebars-kba@natureserve.ca
Input References:	8Trees - 8Trees Inc. 2021 BISON - United States Geological Survey GBIF - Global Biodiversity Information Facility GBIF - GBIF Occurrence Download https://doi.org/10.15468/dl.e3ax32 Accessed from R via rgbif (https://github.com/ropensci/rgbif) on 2024-06-21 GBIF - GBIF.org (29 June 2023) GBIF Occurrence Download https://doi.org/10.15468/dl.ync22y iNaturalist.ca - California Academy of Sciences and the National Geographic Society iNaturalist.ca (original coordinates for obscured records) - California Academy of Sciences and the National Geographic Society iNaturalist.org - California Academy of Sciences and the National Geographic Society ON Element Occurrences - Natural Heritage Information Centre, Ontario Ministry of Natural Resources and Forestry ON Observations and Source Features - Natural Heritage Information Centre, Ontario Ministry of Natural Resources and Forestry QC Element Occurrences - Centre de Données sur le Patrimoine Naturel du Québec QC Ranges of Vertebrates - Ministère de l'Environnement, de la Lutte contre les changements climatiques, de la Faune et des Parcs. Aires de répartition des mammifères terrestres, des reptiles, des amphibiens et des poissons d'eau douce, [Jeu de données], dans Données Québec, 2021, mis à jour le 11 septembre 2023. [https://www.donneesquebec.ca/recherche/dataset/aires-de-repartition-faune], (consulté le 23 avril 2024). VertNet - National Science Foundation
Reviewers by Taxa:	Reviewers by Taxa