

Rotala ramosior pop. 2

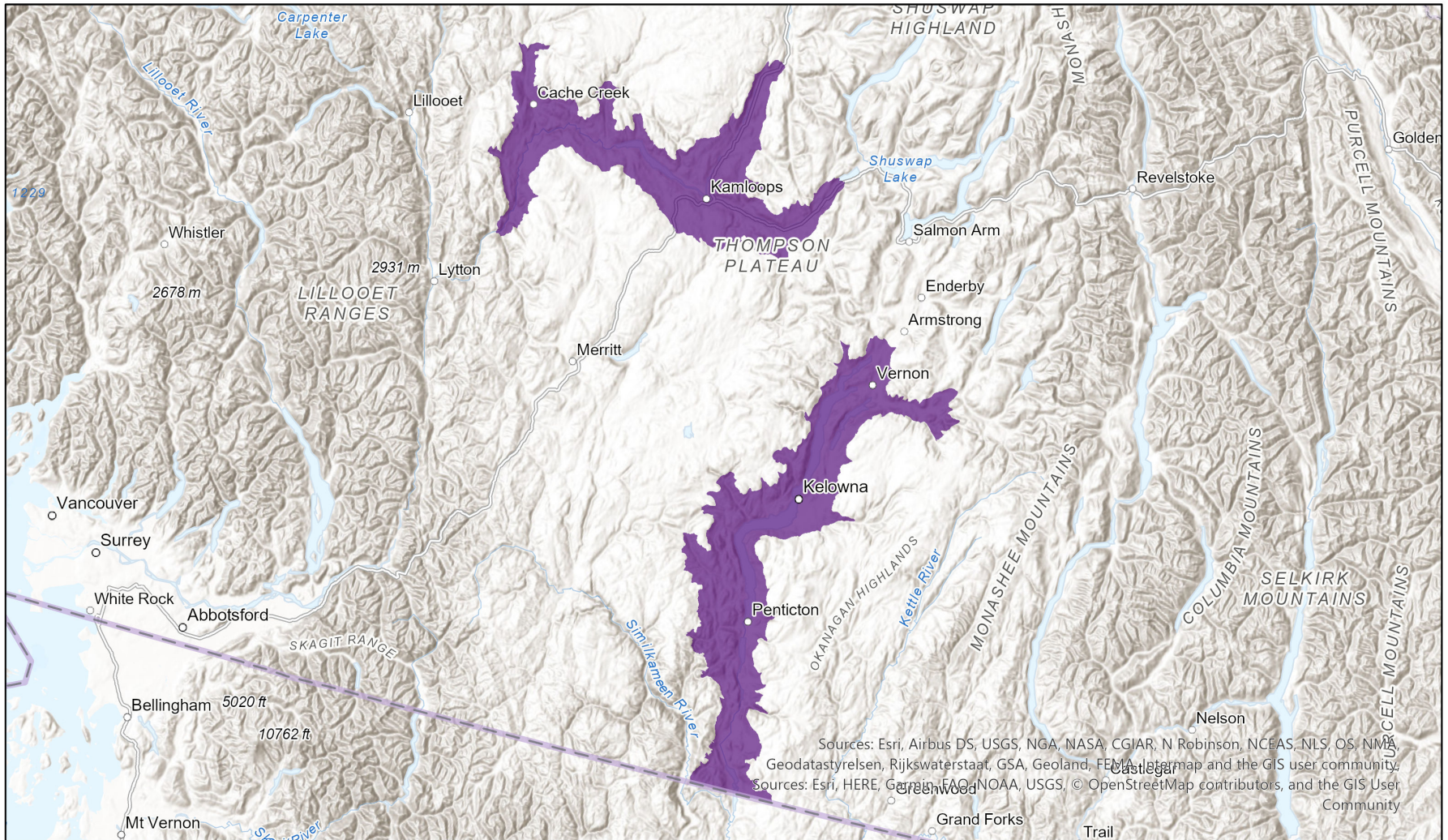


Ecosystem-based Automated Range (EBAR)

Date Generated: March 16, 2023; Version: 1.0; Stage: Expert Reviewed; Scope: Global

Synonyms Used: None

- Present
- Presence Expected
- Historical



Sources: Esri, Airbus DS, USGS, NGA, NASA, CGIAR, N Robinson, NCEAS, NLS, OS, NMA, Geodastyrelsen, Rijkswaterstaat, GSA, Geoland, FEMA, Intermap, mapbox, the GIS user community, Sources: Esri, HERE, Garmin, FAO, NOAA, USGS, © OpenStreetMap contributors, and the GIS User Community

0 40 80 km Input Records - 6 BC Non-sensitive Element Occurrences, 10 BC Vascular Plant Observations, 14 BISON, 5 ECCC Critical Habitat, 25 GBIF, 1 iNaturalist.ca; Expert Reviews - Ryan Batten

Map centre: 119.9636° W 50.0498° N
 © NatureServe Canada 2020 under CC BY 4.0

EBAR is relatively coarse scale data and not intended for all applications and analysis. Please see full disclaimer in metadata.

Ecosystem-based Automated Range (EBAR) Metadata

Species

National Scientific Name:	<i>Rotala ramosior</i> pop. 2
Scientific Name Reference:	Committee on the Status of Endangered Wildlife in Canada (COSEWIC) 2014. COSEWIC assessment results. November 2014. Online: http://www.cosewic.ca/index.php/en-ca/assessment-process
National English Name:	Toothcup - Southern Mountain population
National French Name:	Rotala rameux - Population des montagnes du Sud
Element National ID:	942139
Element Global ID:	942138 (go to NatureServe Explorer)
Element Code:	PDLYT0B032
Endemism Type:	N
Canadian COSEWIC Name:	
Canadian COSEWIC ID:	1284

Rank/Status

Global Rank:	G5TNR
National Rank (Canada):	N1 (reviewed September 08, 2022)
Subnational Ranks (Canada):	Cannot access
National Rank (United States):	Cannot access
Subnational Ranks (United States):	Cannot access
National Rank (Mexico):	Cannot access
Subnational Ranks (Mexico):	Cannot access
Canadian SARA Status:	Endangered/En voie de disparition
Canadian COSEWIC Status:	E
US ESA Status:	Cannot access

Range Map

Date Generated:	March 16, 2023
Version:	1.0
Stage:	Expert Reviewed
Scope:	Global
Metadata:	Primary Species - <i>Rotala ramosior</i> pop. 2 ; Secondary Species - <i>Rotala ramosior</i> (L.) Koehne Input Records - 6 BC Non-sensitive Element Occurrences, 10 BC Vascular Plant Observations, 14 BISON, 5 ECCC Critical Habitat, 25 GBIF, 1 iNaturalist.ca; Expert Reviews - Ryan Batten
Comments:	None Please see spatial data for Ecoshape-level reviewer comments.
Disclaimer:	Please review our methods document before using EBAR. EBAR range data are relatively coarse scale and appropriate for screening and education purposes, but are not intended for all types of applications and analysis. The absence of data in any geographic areas does not necessarily mean that a species is not present. An ecoshape with a presence value does not necessarily mean that a species is present throughout the entire geographic area.
Presence Definitions:	(Please see Comments above for any exceptions) Present - the species is found within the ecoshape based on species observation data, Element Occurrences, Source Features, Canadian Federal Critical Habitat, or expert opinion. Presence Expected - expert opinion the species may be present, or the ecoshape overlapped with a range estimate or a habitat suitability model. Historical - all species occurrence data within the ecoshape contains observation data greater than 40 years old or an Element Occurrence (EO) that was ranked as Extirpated or Historical (EO Rank of H, H?, X or X?).
Usage Type Definitions:	(Please see Comments above for any exceptions) Breeding - the species is thought to breed within the ecoshape based on eBird Breeding and Behaviour Codes or expert opinion. Possible Breeding - the species is probably or possibly breeding within the ecoshape based on eBird, BBA or jurisdiction Breeding and Behaviour Codes, or on expert opinion.
Map Projection:	North America Albers Equal Area Conic (WKID 4269)

Credits

Suggested Citation:	NatureServe Canada, 2020. Ecosystem-based Automated Range (EBAR) for <i>Rotala ramosior</i> pop. 2, Version 1.0, Expert Reviewed (Global Scope). Ottawa, Canada. Retrieved from [insert url] on [insert date]
License:	Ecosystem-based Automated Range (EBAR) Project, Copyright NatureServe Canada 2022 under CC BY 4.0 (creativecommons.org/licenses/by/4.0/)
Project Website:	www.natureserve.org/canada/ebar
Contact:	ebar-kba@natureserve.ca
Input References:	BC Non-sensitive Element Occurrences - British Columbia Conservation Data Centre BC Vascular Plant Observations - British Columbia Conservation Data Centre BISON - United States Geological Survey (https://bison.usgs.gov/) ECCC Critical Habitat - Environment and Climate Change Canada (http://data.ec.gc.ca/data/species/protectrestore/critical-habitat-species-at-risk-canada/) GBIF - Global Biodiversity Information Facility (https://www.gbif.org) iNaturalist.ca - California Academy of Sciences and the National Geographic Society (https://www.inaturalist.ca/)
Reviewers by Taxa:	Reviewers by Taxa