

Rotala ramosior pop. 1

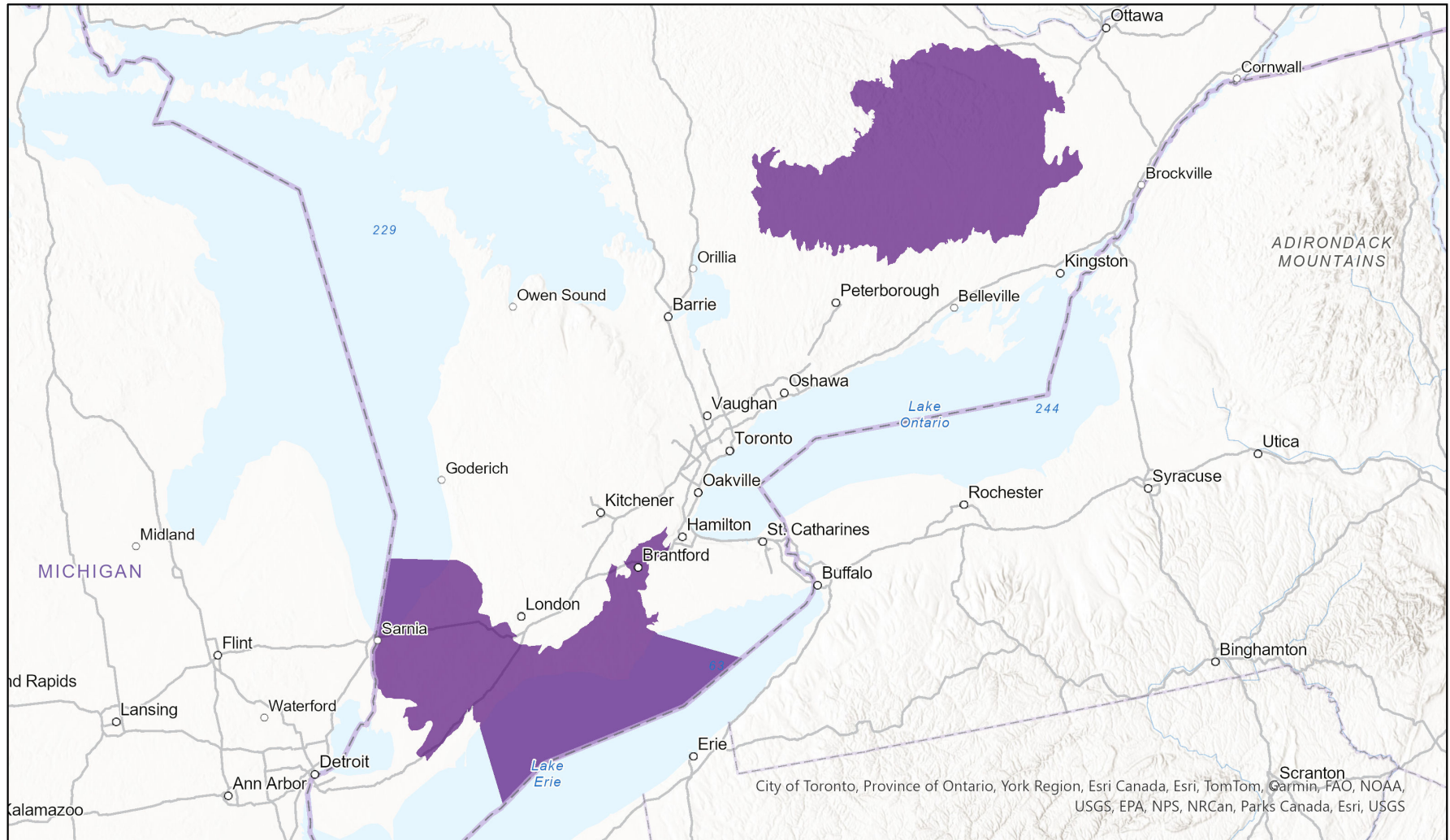


Ecosystem-based Automated Range (EBAR)

Date Generated: February 12, 2024; Version: 1.0; Stage: Expert Reviewed; Scope: Global

Synonyms Used: None

- Present
- Presence Expected
- Historical



0 75 150 km Input Records - 9 BISON, 10 GBIF, 11 iNaturalist.ca, 4 iNaturalist.ca (original coordinates for obscured records), 3 ON Element Occurrences, 93 ON Observations and Source Features; Expert Reviews - Wasyl Bakowsky

Map centre: 79.361° W 43.7929° N
 © NatureServe Canada 2020 under CC BY 4.0

EBAR is relatively coarse scale data and not intended for all applications and analysis. Please see full disclaimer in metadata.

Ecosystem-based Automated Range (EBAR) Metadata

Species

National Scientific Name:	<i>Rotala ramosior pop. 1</i>
Scientific Name Reference:	Committee on the Status of Endangered Wildlife in Canada (COSEWIC) 2014. COSEWIC assessment results. November 2014. Online: http://www.cosewic.ca/index.php/en-ca/assessment-process
National English Name:	Toothcup - Great Lakes Plains population
National French Name:	Rotala rameux - Population des plaines des Grands Lacs
Element National ID:	942133
Element Global ID:	942131 (go to NatureServe Explorer)
Element Code:	PDLYT0B031
Endemism Type:	N
Canadian COSEWIC Name:	
Canadian COSEWIC ID:	1283

Rank/Status

Global Rank:	G5TNR
National Rank (Canada):	N1 (reviewed 2022)
Subnational Ranks (Canada):	ON=SNR
National Rank (United States):	None
Subnational Ranks (United States):	None
National Rank (Mexico):	None
Subnational Ranks (Mexico):	None
Canadian SARA Status:	Threatened/Menacée (June 05, 2003)
Canadian COSEWIC Status:	Threatened (November 28, 2014)
US ESA Status:	None

Range Map

Date Generated:	February 12, 2024
Version:	1.0
Stage:	Expert Reviewed
Scope:	Global
Metadata:	Primary Species - <i>Rotala ramosior</i> pop. 1 ; Secondary Species - <i>Rotala ramosior</i> (L.) Koehne Input Records - 9 BISON, 10 GBIF, 11 iNaturalist.ca, 4 iNaturalist.ca (original coordinates for obscured records), 3 ON Element Occurrences, 93 ON Observations and Source Features; Expert Reviews - Wasyl Bakowsky
Comments:	None Please see spatial data for Ecoshape-level reviewer comments.
Disclaimer:	Please review our methods document before using EBAR. EBAR range data are relatively coarse scale and appropriate for screening and education purposes, but are not intended for all types of applications and analysis. The absence of data in any geographic areas does not necessarily mean that a species is not present. An ecoshape with a presence value does not necessarily mean that a species is present throughout the entire geographic area.
Presence Definitions:	(Please see Comments above for any exceptions) Present - the species is found within the ecoshape based on species observation data, Element Occurrences, Source Features, Canadian Federal Critical Habitat, or expert opinion. Presence Expected - expert opinion the species may be present, or the ecoshape overlapped with a range estimate or a habitat suitability model. Historical - all species occurrence data within the ecoshape contains observation data greater than 40 years old or an Element Occurrence (EO) that was ranked as Extirpated or Historical (EO Rank of H, H?, X or X?).
Usage Type Definitions:	(Please see Comments above for any exceptions) Breeding - the species is thought to breed within the ecoshape based on eBird Breeding and Behaviour Codes or expert opinion. Possible Breeding - the species is probably or possibly breeding within the ecoshape based on eBird, BBA or jurisdiction Breeding and Behaviour Codes, or on expert opinion.
Map Projection:	North America Albers Equal Area Conic (WKID 4269)

Credits

Suggested Citation:	NatureServe Canada, 2020. Ecosystem-based Automated Range (EBAR) for <i>Rotala ramosior</i> pop. 1, Version 1.0, Expert Reviewed (Global Scope). Ottawa, Canada. Retrieved from [insert url] on [insert date]
License:	Ecosystem-based Automated Range (EBAR) Project, Copyright NatureServe Canada 2022 under CC BY 4.0 (creativecommons.org/licenses/by/4.0/)
Project Website:	www.natureserve.org/canada/ebar
Contact:	ebar-kba@natureserve.ca
Input References:	BISON - United States Geological Survey GBIF - Global Biodiversity Information Facility iNaturalist.ca - California Academy of Sciences and the National Geographic Society iNaturalist.ca (original coordinates for obscured records) - California Academy of Sciences and the National Geographic Society ON Element Occurrences - Natural Heritage Information Centre, Ontario Ministry of Natural Resources and Forestry ON Observations and Source Features - Natural Heritage Information Centre, Ontario Ministry of Natural Resources and Forestry
Reviewers by Taxa:	Reviewers by Taxa