

Lypoglossa manitobae

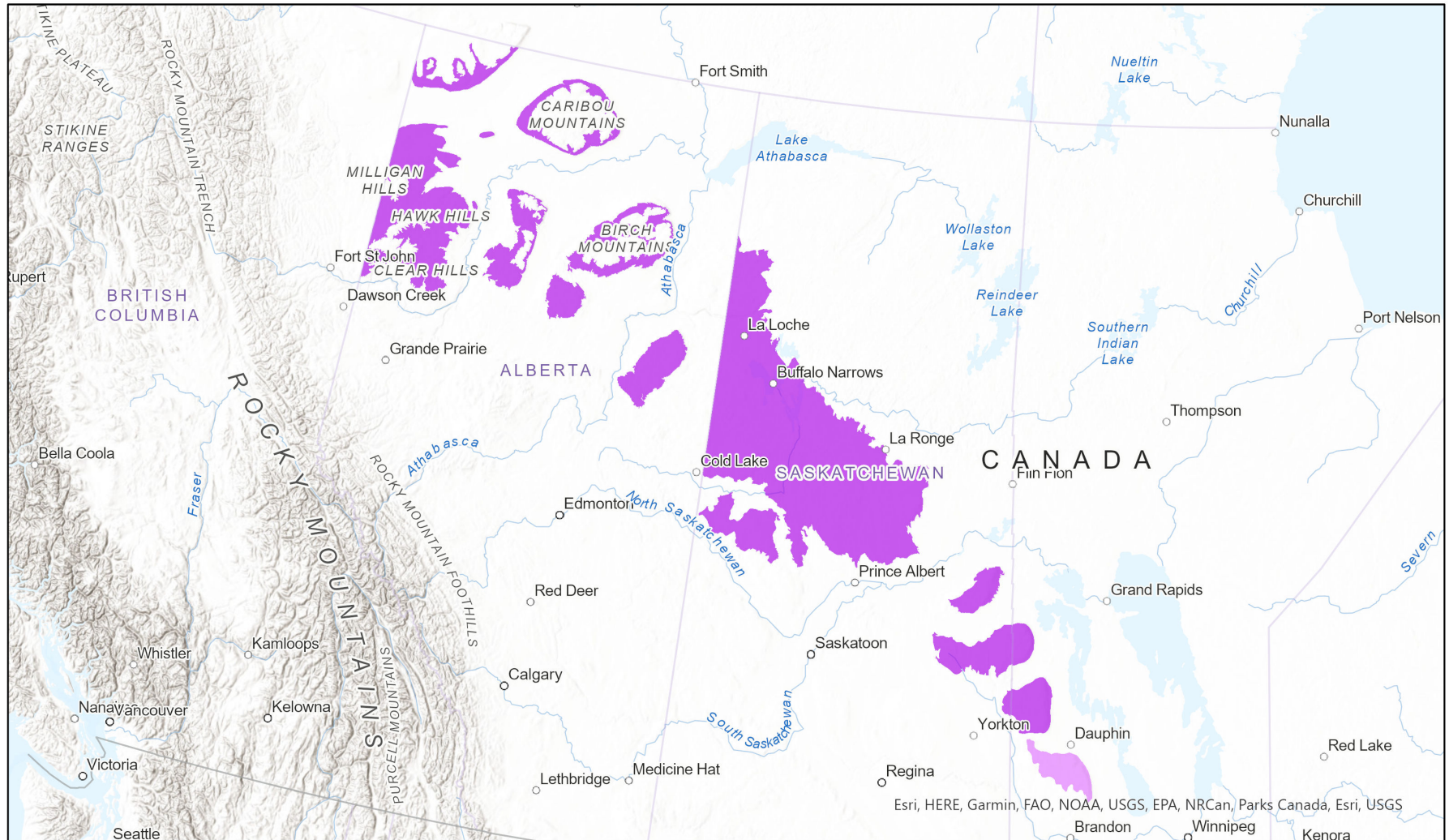


- Present
- Presence Expected
- Historical

Ecosystem-based Automated Range (EBAR)

Date Generated: January 26, 2023; Version: 1.0; Stage: Expert Reviewed; Scope: Global

Synonyms Used: None



0 210 420 km

Map centre: 109.5876° W 55.2193° N

© NatureServe Canada 2020 under CC BY 4.0

EBAR is relatively coarse scale data and not intended for all applications and analysis. Please see full disclaimer in metadata.

Input Records - 2 MB Element Occurrences, 2 MB Source Feature Polygons; Expert Reviews - 1 Anonymous

Ecosystem-based Automated Range (EBAR) Metadata

Species

National Scientific Name:	<i>Lypoglossa manitobae</i> Gusarov, 2004
Scientific Name Reference:	Bousquet, Y., P. Bouchard, A.E. Davies, and D.S. Sikes. 2013. Checklist of beetles (Coleoptera) of Canada and Alaska, second edition. Pensoft Series Faunistica No 109. [Downloadable checklist available: Bousquet, Y., P. Bouchard, A.E. Davies, and D.S. Sikes. 2013. Data associated with Checklist of beetles (Coleoptera) of Canada and Alaska. Second Edition. Data Paper. ZooKeys 360:1-44. http://dx.doi.org/10.5886/998db52a]
National English Name:	Brownish Minute Rove Beetle
National French Name:	Aléochare brunâtre
Element National ID:	923510
Element Global ID:	919322 (go to NatureServe Explorer)
Element Code:	IICOLRZE20
Endemism Type:	Y
Canadian COSEWIC Name:	
Canadian COSEWIC ID:	

Rank/Status

Global Rank:	G1G3 (reviewed October 16, 2022)
National Rank (Canada):	N1N3 (reviewed 2022)
Subnational Ranks (Canada):	MB=S1S3
National Rank (United States):	None
Subnational Ranks (United States):	None
National Rank (Mexico):	None
Subnational Ranks (Mexico):	None
Canadian SARA Status:	None
Canadian COSEWIC Status:	None
US ESA Status:	None

Range Map

Date Generated: January 26, 2023
Version: 1.0
Stage: Expert Reviewed
Scope: Global
Metadata: Primary Species - *Lypoglossa manitobae* Gusarov, 2004
Input Records - 2 MB Element Occurrences, 2 MB Source Feature Polygons; Expert Reviews - 1 Anonymous

Comments:

Disclaimer:

Please review our [methods document](#) before using EBAR.

EBAR range data are relatively coarse scale and appropriate for screening and education purposes, but are not intended for all types of applications and analysis.

The absence of data in any geographic areas does not necessarily mean that a species is not present.

An ecoshape with a presence value does not necessarily mean that a species is present throughout the entire geographic area.

Presence Definitions:

(Please see Comments above for any exceptions)

Present - the species is found within the ecoshape based on species observation data, Element Occurrences, Source Features, Canadian Federal Critical Habitat, or expert opinion.

Presence Expected - expert opinion the species may be present, or the ecoshape overlapped with a range estimate or a habitat suitability model.

Historical - all species occurrence data within the ecoshape contains observation data greater than 40 years old or an Element Occurrence (EO) that was ranked as Extirpated or Historical (EO Rank of H, H?, X or X?).

Usage Type Definitions:

(Please see Comments above for any exceptions)

Breeding - the species is thought to breed within the ecoshape based on eBird Breeding and Behaviour Codes or expert opinion.

Possible Breeding - the species is probably or possibly breeding within the ecoshape based on eBird, BBA or jurisdiction Breeding and Behaviour Codes, or on expert opinion.

Migration - the species is thought to migrate within the ecoshape based on eBird Breeding and Behaviour Codes or expert opinion.

Map Projection:

North America Albers Equal Area Conic (WKID 4269)

Credits

Suggested Citation:	NatureServe Canada, 2020. Ecosystem-based Automated Range (EBAR) for <i>Lypoglossa manitobae</i> , Version 1.0, Expert Reviewed (Global Scope). Ottawa, Canada. Retrieved from [insert url] on [insert date]
License:	Ecosystem-based Automated Range (EBAR) Project, Copyright NatureServe Canada 2022 under CC BY 4.0 (creativecommons.org/licenses/by/4.0/)
Project Website:	www.natureserve.org/canada/ebars
Contact:	ebars-kba@natureserve.ca
Input References:	MB Element Occurrences - Manitoba Conservation Data Centre MB Source Feature Polygons - Manitoba Conservation Data Centre
Reviewers by Taxa:	Reviewers by Taxa