

# *Bombus mckayi*

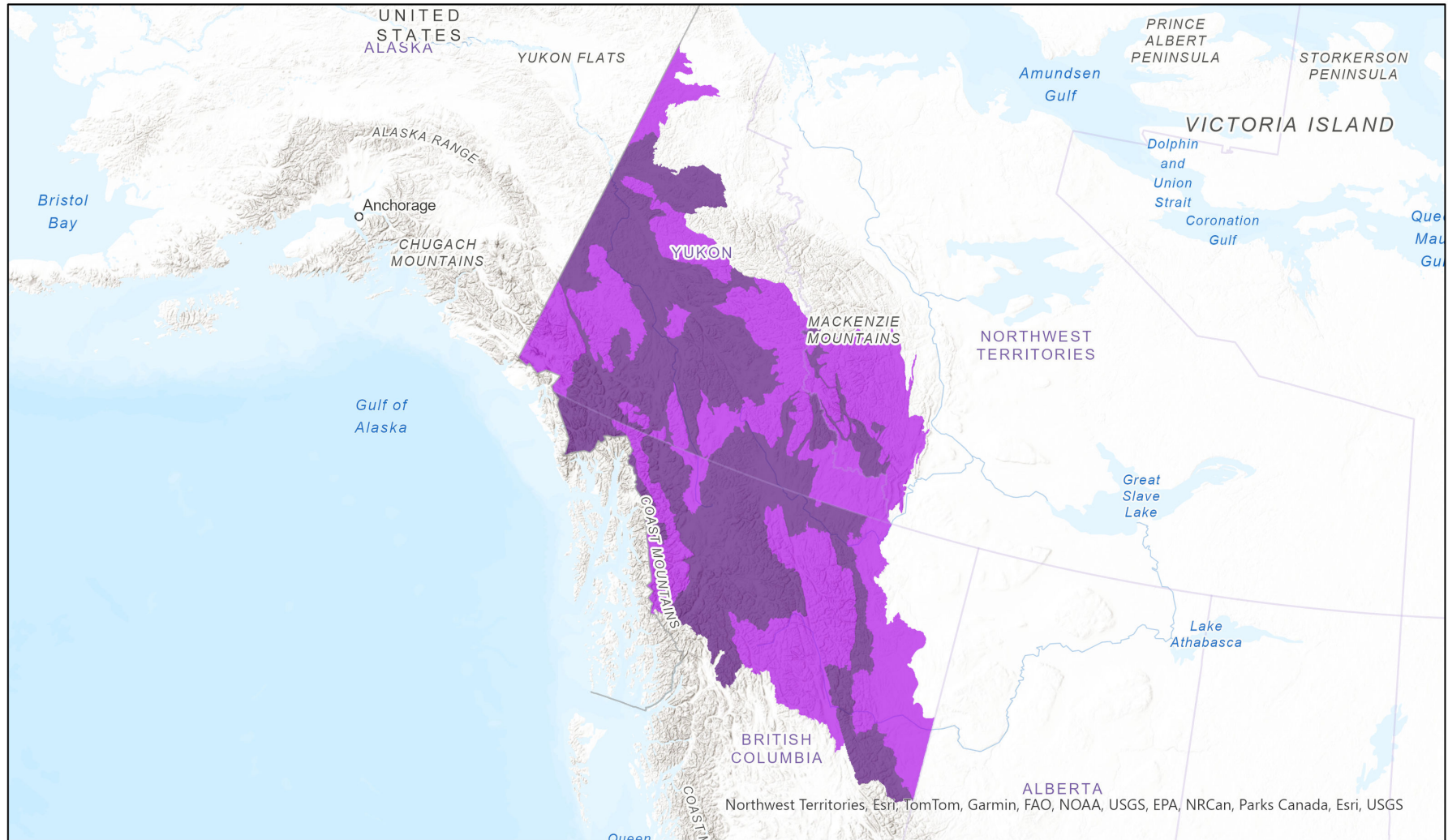


- Present
- Presence Expected
- Historical

## Ecosystem-based Automated Range (EBAR)

Date Generated: March 4, 2024; Version: 1.0; Stage: Expert Reviewed (National); Scope: Canadian

Synonyms Used: *Bombus occidentalis mckayi*



0 300 600 km Input Records - 11 BC Non-sensitive Element Occurrences, 53 BISON, 162 *Bombus mckayi* COSEWIC Range Map (2014), 390 Bumble Bees of North America, 95 GBIF, 4 iDigBio, 106 iNaturalist.ca, 20 iNaturalist.org, 233 Royal British Columbia Museum; Expert Reviews - Syd Cannings, Joel Gibson, Jason Gibbs, Justin Fulkerson, Amanda Liczner, Syd Cannings

Map centre: 131.7997°W 60.8704°N  
 © NatureServe Canada 2020 under CC BY 4.0

EBAR is relatively coarse scale data and not intended for all applications and analysis. Please see full disclaimer in metadata.

## Ecosystem-based Automated Range (EBAR) Metadata

---

### Species

National Scientific Name:	<i>Bombus mckayi</i> Ashmead, 1902
Scientific Name Reference:	Williams, P.H. 2021. Not just cryptic, but a barcode bush: PTP re-analysis of global data for the bumblebee subgenus <i>Bombus</i> s. str. supports additional species (Apidae, genus <i>Bombus</i> ). <i>Journal of Natural History</i> 55(5-6): 271-282.
National English Name:	McKay's Western Bumble Bee
National French Name:	Bourdon de McKay; Bourdon de l'Ouest
Element National ID:	916919
Element Global ID:	916917 ( <a href="#">go to NatureServe Explorer</a> )
Element Code:	IIHYM24251
Endemism Type:	N
Canadian COSEWIC Name:	<i>Bombus occidentalis mckayi</i>
Canadian COSEWIC ID:	1256

## Rank/Status

<b>Global Rank:</b>	G4 (reviewed April 08, 2018)
<b>National Rank (Canada):</b>	NNR
<b>Subnational Ranks (Canada):</b>	BC=S3S4, NT=S2S3, YT=S3S4
<b>National Rank (United States):</b>	NNR
<b>Subnational Ranks (United States):</b>	AK=S4
<b>National Rank (Mexico):</b>	None
<b>Subnational Ranks (Mexico):</b>	None
<b>Canadian SARA Status:</b>	Special Concern/Préoccupante (December 08, 2023)
<b>Canadian COSEWIC Status:</b>	Special Concern (May 02, 2014)
<b>US ESA Status:</b>	None

## Range Map

<b>Date Generated:</b>	March 04, 2024
<b>Version:</b>	1.0
<b>Stage:</b>	Expert Reviewed (National)
<b>Scope:</b>	Canadian
<b>Metadata:</b>	Primary Species - <i>Bombus mckayi</i> Ashmead, 1902; Synonyms - <i>Bombus occidentalis mckayi</i> Ashmead, 1902 Input Records - 11 BC Non-sensitive Element Occurrences, 53 BISON, 162 Bombus mckayi COSEWIC Range Map (2014), 390 Bumble Bees of North America, 95 GBIF, 4 iDigBio, 106 iNaturalist.ca, 20 iNaturalist.org, 233 Royal British Columbia Museum; Expert Reviews - Syd Cannings, Joel Gibson, Jason Gibbs, Justin Fulkerson, Amanda Liczner, Syd Cannings
<b>Comments:</b>	None <a href="#">Please see spatial data for Ecoshape-level reviewer comments.</a>
<b>Disclaimer:</b>	Please review our <a href="#">methods document</a> before using EBAR.  EBAR range data are relatively coarse scale and appropriate for screening and education purposes, but are not intended for all types of applications and analysis.  The absence of data in any geographic areas does not necessarily mean that a species is not present.  An ecoshape with a presence value does not necessarily mean that a species is present throughout the entire geographic area.
<b>Presence Definitions:</b>	(Please see Comments above for any exceptions)  Present - the species is found within the ecoshape based on species observation data, Element Occurrences, Source Features, Canadian Federal Critical Habitat, or expert opinion.  Presence Expected - expert opinion the species may be present, or the ecoshape overlapped with a range estimate or a habitat suitability model.  Historical - all species occurrence data within the ecoshape contains observation data greater than 40 years old or an Element Occurrence (EO) that was ranked as Extirpated or Historical (EO Rank of H, H?, X or X?).
<b>Usage Type Definitions:</b>	(Please see Comments above for any exceptions)  Breeding - the species is thought to breed within the ecoshape based on eBird Breeding and Behaviour Codes or expert opinion.  Possible Breeding - the species is probably or possibly breeding within the ecoshape based on eBird, BBA or jurisdiction Breeding and Behaviour Codes, or on expert opinion.
<b>Map Projection:</b>	North America Albers Equal Area Conic (WKID 4269)

## Credits

**Suggested Citation:**

NatureServe Canada, 2020. Ecosystem-based Automated Range (EBAR) for *Bombus mckayi*, Version 1.0, Expert Reviewed (National) (Canadian Scope). Ottawa, Canada. Retrieved from [insert url] on [insert date]

**License:**

Ecosystem-based Automated Range (EBAR) Project, Copyright NatureServe Canada 2022 under CC BY 4.0 ([creativecommons.org/licenses/by/4.0/](https://creativecommons.org/licenses/by/4.0/))

**Project Website:**

[www.natureserve.org/canada/ebar](http://www.natureserve.org/canada/ebar)

**Contact:**

[ebar-kba@natureserve.ca](mailto:ebar-kba@natureserve.ca)

**Input References:**

BC Non-sensitive Element Occurrences - British Columbia Conservation Data Centre

BISON - [United States Geological Survey](#)

*Bombus mckayi* COSEWIC Range Map (2014) - [COSEWIC. 2014. COSEWIC assessment and status report on the Western Bumble Bee \*Bombus occidentalis\*, \*occidentalis\* subspecies \(\*Bombus occidentalis occidentalis\*\) and the \*mckayi\* subspecies \(\*Bombus occidentalis mckayi\*\) in Canada. Committee on the Status of Endangered Wildlife in Canada. Ottawa. xii + 52 pp.](#)

Bumble Bees of North America - [Richardson, L. L. 2019. Bumble bees of North America occurrence records database. www.leifrichardson/bbna. Data accessed 11-21-2019.](#)

GBIF - [Global Biodiversity Information Facility](#)

iDigBio - [Integrated Digital Biocollection](#)

iNaturalist.ca - [California Academy of Sciences and the National Geographic Society](#)

iNaturalist.org - [California Academy of Sciences and the National Geographic Society](#)

Royal British Columbia Museum - [RBCM \(https://royalbcmuseum.bc.ca/\)](https://royalbcmuseum.bc.ca/)

**Reviewers by Taxa:**

[Reviewers by Taxa](#)