

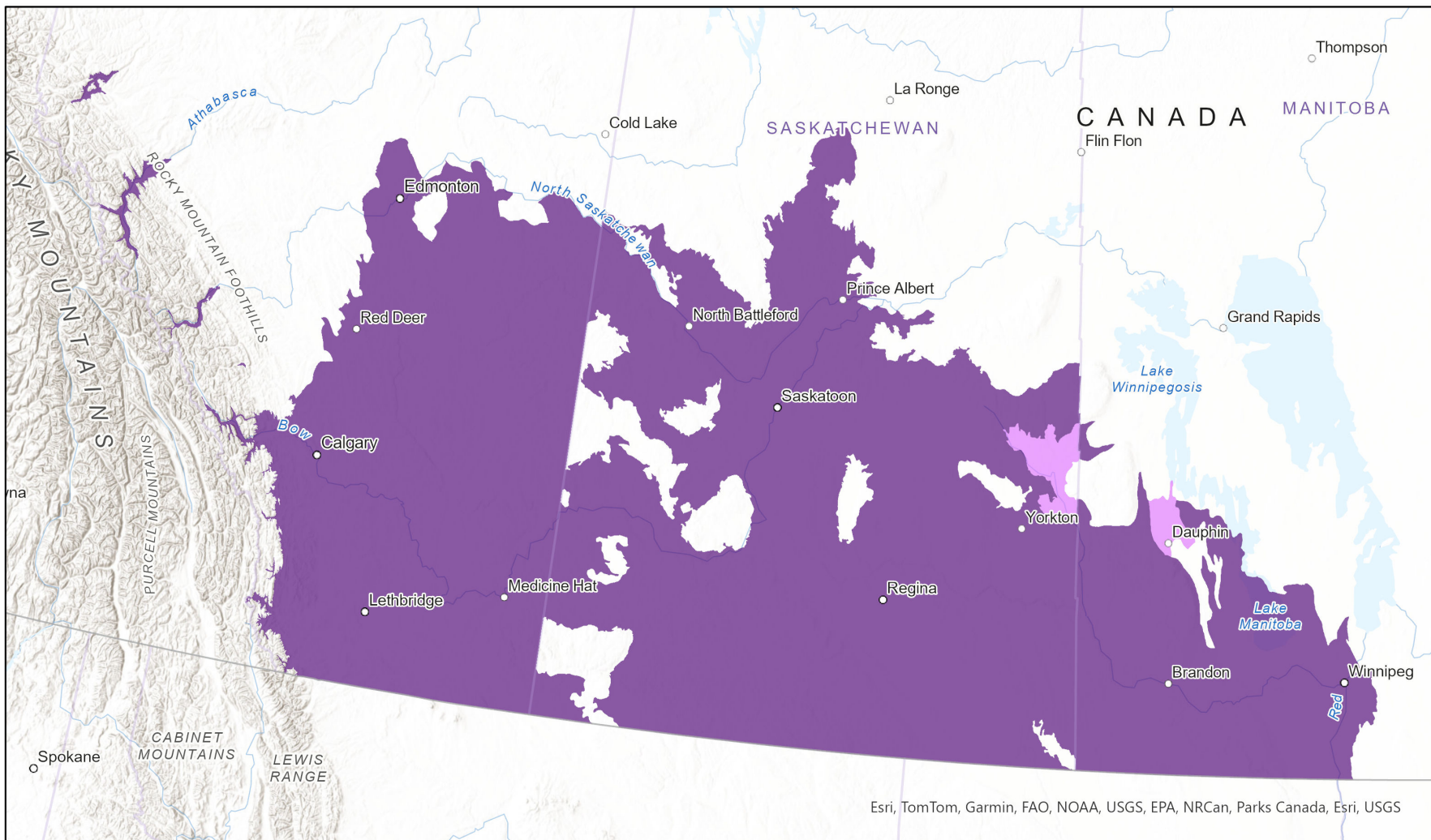
Ambystoma mavortium pop. 2



Ecosystem-based Automated Range (EBAR)

Date Generated: August 9, 2023; Version: 1.0; Stage: Expert Reviewed; Scope: Global

Synonyms Used: None



Esri, TomTom, Garmin, FAO, NOAA, USGS, EPA, NRCAN, Parks Canada, Esri, USGS

0 130 260 km

Input Records - 190 BISON, 573 GBIF, 13 iDigBio, 412 iNaturalist.ca, 130 iNaturalist.org, 97 MB Element Occurrences, 4 MB Source Feature Lines, 58 MB Source Feature Points, 78 MB Source Feature Polygons, 4 MT Ranges, 105 SK Element Occurrences, 13 SK Source Feature Points, 32 SK Source Feature Polygons, 15 VertNet;

Map centre: 107.509° W 51.9096° N
© NatureServe Canada 2020 under CC BY 4.0

EBAR is relatively coarse scale data and not intended for all applications and analysis. Please see full disclaimer in metadata.

Expert Reviews - Laura Gardiner

Ecosystem-based Automated Range (EBAR) Metadata

Species

National Scientific Name:	<i>Ambystoma mavortium pop. 2</i>
Scientific Name Reference:	Committee on the Status of Endangered Wildlife in Canada (COSEWIC). 2012b. COSEWIC Assessment Results November 2012. Accessed online at http://www.cosewic.ca/index.php/en-ca/assessment-process
National English Name:	Western Tiger Salamander - Prairie / Boreal population
National French Name:	Salamandre tigrée de l'Ouest - Population boréale et des Prairies
Element National ID:	884786
Element Global ID:	884785 (go to NatureServe Explorer)
Element Code:	AAAAA01149
Endemism Type:	N
Canadian COSEWIC Name:	
Canadian COSEWIC ID:	1224

Rank/Status

Global Rank:	G5TNRQ
National Rank (Canada):	NNR
Subnational Ranks (Canada):	AB=SNR, MB=SNR, SK=SNR
National Rank (United States):	None
Subnational Ranks (United States):	None
National Rank (Mexico):	None
Subnational Ranks (Mexico):	None
Canadian SARA Status:	Special Concern/Préoccupante (February 02, 2018)
Canadian COSEWIC Status:	Special Concern (November 25, 2012)
US ESA Status:	None

Range Map

Date Generated:	August 09, 2023
Version:	1.0
Stage:	Expert Reviewed
Scope:	Global
Metadata:	Primary Species - <i>Ambystoma mavortium</i> pop. 2 ; Secondary Species - <i>Ambystoma mavortium</i> Baird, 1850 Input Records - 190 BISON, 573 GBIF, 13 iDigBio, 412 iNaturalist.ca, 130 iNaturalist.org, 97 MB Element Occurrences, 4 MB Source Feature Lines, 58 MB Source Feature Points, 78 MB Source Feature Polygons, 4 MT Ranges, 105 SK Element Occurrences, 13 SK Source Feature Points, 32 SK Source Feature Polygons, 15 VertNet; Expert Reviews - Laura Gardiner
Comments:	Range spatially constrained to Alberta, Saskatchewan, and Manitoba to capture the COSEWIC population extent. Please see spatial data for Ecoshape-level reviewer comments.
Disclaimer:	Please review our methods document before using EBAR. EBAR range data are relatively coarse scale and appropriate for screening and education purposes, but are not intended for all types of applications and analysis. The absence of data in any geographic areas does not necessarily mean that a species is not present. An ecoshape with a presence value does not necessarily mean that a species is present throughout the entire geographic area.
Presence Definitions:	(Please see Comments above for any exceptions) Present - the species is found within the ecoshape based on species observation data, Element Occurrences, Source Features, Canadian Federal Critical Habitat, or expert opinion. Presence Expected - expert opinion the species may be present, or the ecoshape overlapped with a range estimate or a habitat suitability model. Historical - all species occurrence data within the ecoshape contains observation data greater than 40 years old or an Element Occurrence (EO) that was ranked as Extirpated or Historical (EO Rank of H, H?, X or X?).
Usage Type Definitions:	(Please see Comments above for any exceptions) Breeding - the species is thought to breed within the ecoshape based on eBird Breeding and Behaviour Codes or expert opinion. Possible Breeding - the species is probably or possibly breeding within the ecoshape based on eBird, BBA or jurisdiction Breeding and Behaviour Codes, or on expert opinion.
Map Projection:	North America Albers Equal Area Conic (WKID 4269)

Credits

Suggested Citation:

NatureServe Canada, 2020. Ecosystem-based Automated Range (EBAR) for *Ambystoma mavortium* pop. 2, Version 1.0, Expert Reviewed (Global Scope). Ottawa, Canada. Retrieved from [insert url] on [insert date]

License:

Ecosystem-based Automated Range (EBAR) Project, Copyright NatureServe Canada 2022 under CC BY 4.0 (creativecommons.org/licenses/by/4.0/)

Project Website:

www.natureserve.org/canada/ebars

Contact:

ebars-kba@natureserve.ca

Input References:

BISON - [United States Geological Survey](#)

GBIF - [Global Biodiversity Information Facility](#)

iDigBio - [Integrated Digital Biocollection](#)

iNaturalist.ca - [California Academy of Sciences and the National Geographic Society](#)

iNaturalist.ca (original coordinates for obscured records) - [California Academy of Sciences and the National Geographic Society](#)

iNaturalist.org - [California Academy of Sciences and the National Geographic Society](#)

MB Element Occurrences - Manitoba Conservation Data Centre

MB Source Feature Lines - Manitoba Conservation Data Centre

MB Source Feature Points - Manitoba Conservation Data Centre

MB Source Feature Polygons - Manitoba Conservation Data Centre

MT Ranges - Montana Natural Heritage Program

SK Element Occurrences - Saskatchewan Conservation Data Centre

SK Source Feature Points - Saskatchewan Conservation Data Centre

SK Source Feature Polygons - Saskatchewan Conservation Data Centre

VertNet - [National Science Foundation](#)

Reviewers by Taxa:

[Reviewers by Taxa](#)