

Sistrurus catenatus pop. 1

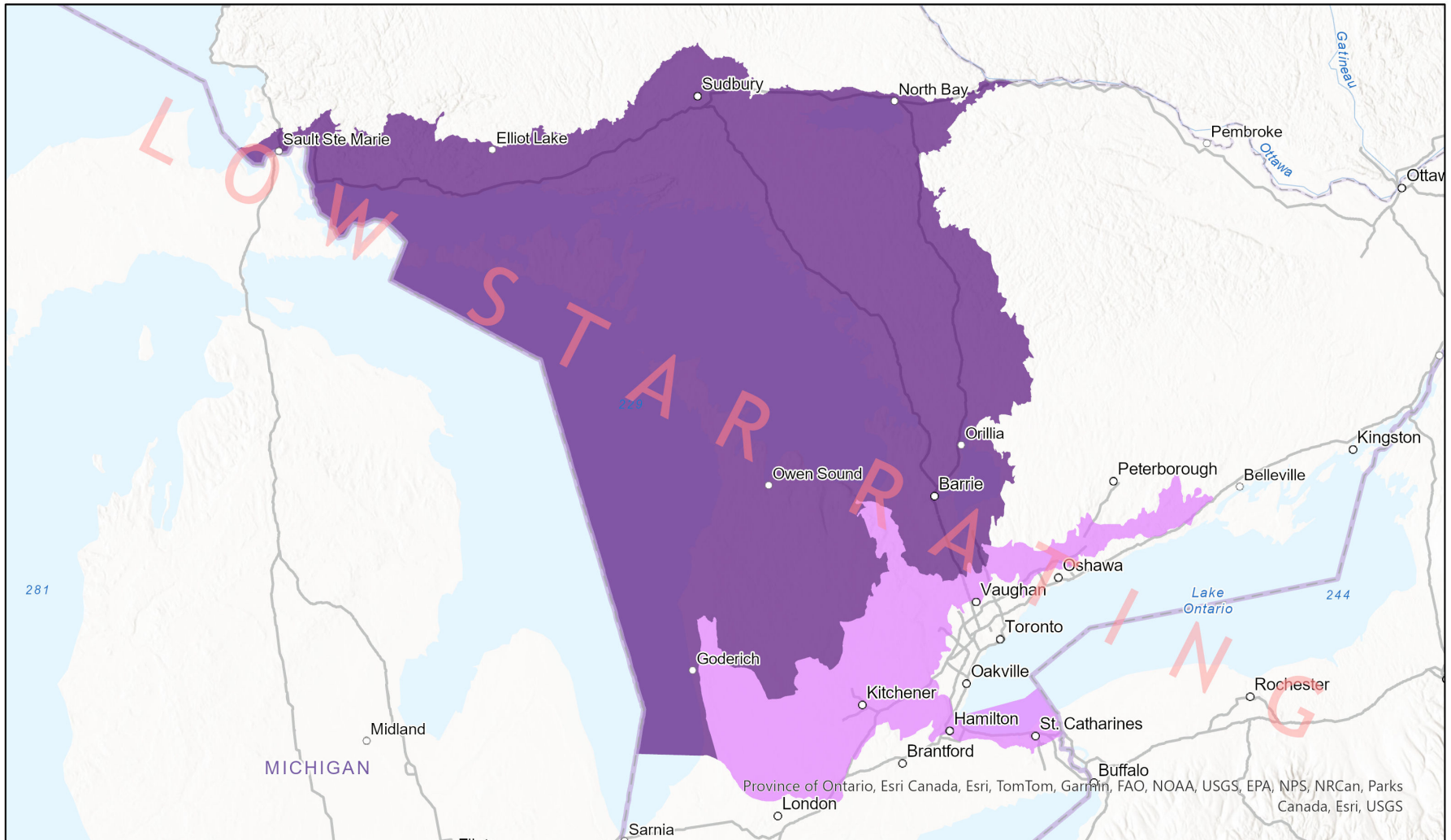


Ecosystem-based Automated Range (EBAR)

Date Generated: April 4, 2024; Version: 1.0; Stage: Expert Reviewed (Low Star Rating); Scope: Global

Synonyms Used: *Sistrurus catenatus catenatus*

- Present
- Presence Expected
- Historical



0 70 140 km

Input Records - 278 BISON, 2326 GBIF, 59 iDigBio, 177 iNaturalist.ca, 2012 iNaturalist.ca (original coordinates for obscured records), 142 iNaturalist.org, 74 ON Element Occurrences, 21005 ON Observations and Source Features, 38 VertNet; Expert Reviews - Tyler Miller, Patrick Moldowan, Jeff Hathaway

Map centre: 81.1789° W 44.9023° N
 © NatureServe Canada 2020 under CC BY 4.0

EBAR is relatively coarse scale data and not intended for all applications and analysis. Please see full disclaimer in metadata.

Ecosystem-based Automated Range (EBAR) Metadata

Species

National Scientific Name:	<i>Sistrurus catenatus pop. 1</i>
Scientific Name Reference:	Committee on the Status of Endangered Wildlife in Canada (COSEWIC). 2012b. COSEWIC Assessment Results November 2012. Accessed online at http://www.cosewic.ca/index.php/en-ca/assessment-process
National English Name:	Massasauga - Great Lakes / St. Lawrence population
National French Name:	Massasauga - Population des Grands Lacs et du Saint-Laurent
Element National ID:	884609
Element Global ID:	884608 (go to NatureServe Explorer)
Element Code:	ARADE03014
Endemism Type:	N
Canadian COSEWIC Name:	
Canadian COSEWIC ID:	1220

Rank/Status

Global Rank:	G3T3Q (reviewed May 21, 2015)
National Rank (Canada):	N3 (reviewed 2015)
Subnational Ranks (Canada):	ON=S3
National Rank (United States):	None
Subnational Ranks (United States):	None
National Rank (Mexico):	None
Subnational Ranks (Mexico):	None
Canadian SARA Status:	Threatened/Menacée (January 12, 2005)
Canadian COSEWIC Status:	Threatened (November 25, 2012)
US ESA Status:	None

Range Map

Date Generated:	April 04, 2024
Version:	1.0
Stage:	Expert Reviewed (Low Star Rating)
Scope:	Global
Metadata:	Primary Species - <i>Sistrurus catenatus pop. 1</i> ; Secondary Species - <i>Sistrurus catenatus</i> (Rafinesque, 1818); Synonyms - <i>Sistrurus catenatus catenatus</i> (Rafinesque, 1818) Input Records - 278 BISON, 2326 GBIF, 59 iDigBio, 177 iNaturalist.ca, 2012 iNaturalist.ca (original coordinates for obscured records), 142 iNaturalist.org, 74 ON Element Occurrences, 21005 ON Observations and Source Features, 38 VertNet; Expert Reviews - Tyler Miller, Patrick Moldowan, Jeff Hathaway
Comments:	This range has a low star rating. This range overestimates the distribution of <i>S. catenatus pop. 1</i> .
Disclaimer:	Please review our methods document before using EBAR. EBAR range data are relatively coarse scale and appropriate for screening and education purposes, but are not intended for all types of applications and analysis. The absence of data in any geographic areas does not necessarily mean that a species is not present. An ecoshape with a presence value does not necessarily mean that a species is present throughout the entire geographic area.
Presence Definitions:	(Please see Comments above for any exceptions) Present - the species is found within the ecoshape based on species observation data, Element Occurrences, Source Features, Canadian Federal Critical Habitat, or expert opinion. Presence Expected - expert opinion the species may be present, or the ecoshape overlapped with a range estimate or a habitat suitability model. Historical - all species occurrence data within the ecoshape contains observation data greater than 40 years old or an Element Occurrence (EO) that was ranked as Extirpated or Historical (EO Rank of H, H?, X or X?).
Usage Type Definitions:	(Please see Comments above for any exceptions) Breeding - the species is thought to breed within the ecoshape based on eBird Breeding and Behaviour Codes or expert opinion. Possible Breeding - the species is probably or possibly breeding within the ecoshape based on eBird, BBA or jurisdiction Breeding and Behaviour Codes, or on expert opinion.
Map Projection:	North America Albers Equal Area Conic (WKID 4269)

Credits

Suggested Citation:	NatureServe Canada, 2020. Ecosystem-based Automated Range (EBAR) for <i>Sistrurus catenatus</i> pop. 1, Version 1.0, Expert Reviewed (Low Star Rating) (Global Scope). Ottawa, Canada. Retrieved from [insert url] on [insert date]
License:	Ecosystem-based Automated Range (EBAR) Project, Copyright NatureServe Canada 2022 under CC BY 4.0 (creativecommons.org/licenses/by/4.0/)
Project Website:	www.natureserve.org/canada/ebar
Contact:	ebbar-kba@natureserve.ca
Input References:	BISON - United States Geological Survey GBIF - Global Biodiversity Information Facility iDigBio - Integrated Digital Biocollection iNaturalist.ca - California Academy of Sciences and the National Geographic Society iNaturalist.ca (original coordinates for obscured records) - California Academy of Sciences and the National Geographic Society iNaturalist.org - California Academy of Sciences and the National Geographic Society ON Element Occurrences - Natural Heritage Information Centre, Ontario Ministry of Natural Resources and Forestry ON Observations and Source Features - Natural Heritage Information Centre, Ontario Ministry of Natural Resources and Forestry VertNet - National Science Foundation
Reviewers by Taxa:	Reviewers by Taxa