

Papilio indra indra

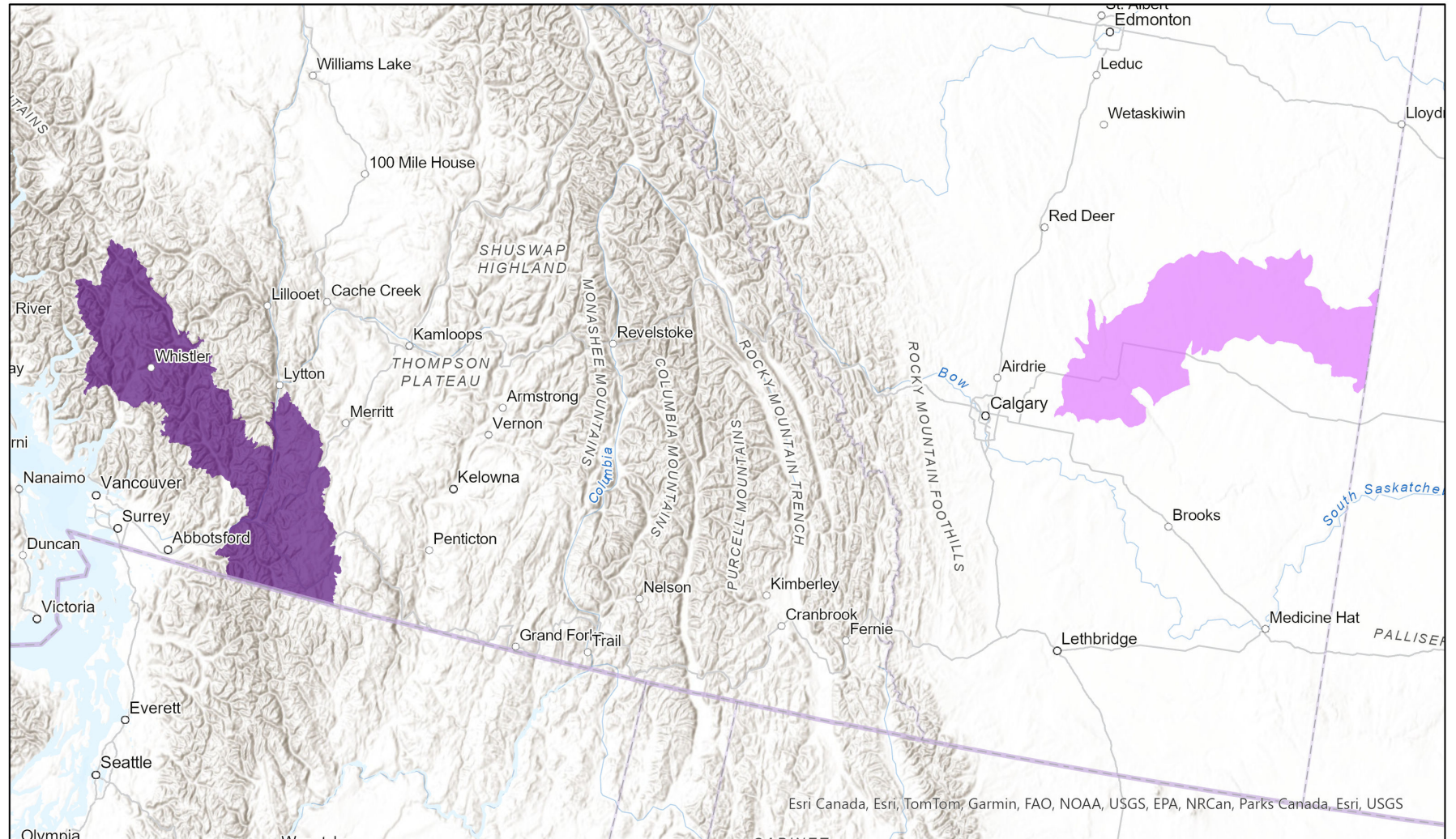


- Present
- Presence Expected
- Historical

Ecosystem-based Automated Range (EBAR)

Date Generated: August 25, 2023; Version: 1.0; Stage: Expert Reviewed (National); Scope: Canadian

Synonyms Used: None



Input Records - 1 BAMONA, 1 BC Non-sensitive Element Occurrences, 3 BC Survey Observations, 13 GBIF, 6 iNaturalist.ca, 6 iNaturalist.org; Expert Reviews - BC Experts

Map centre: 116.7939°W 50.6808°N
© NatureServe Canada 2020 under CC BY 4.0
EBAR is relatively coarse scale data and not intended for all applications and analysis. Please see full disclaimer in metadata.

Ecosystem-based Automated Range (EBAR) Metadata

Species

National Scientific Name:	<i>Papilio indra indra</i> Reakirt, 1866
Scientific Name Reference:	Pohl, G.R. J-F. Landry, B.C. Schmidt, J.D. Lafontaine, J.T. Troubridge, A.D. Macaulay, E. van Nieukerken, J.R. deWaard, J.J. Dombroskie, J. Klymko, V. Nazari and K. Stead. 2018. Annotated checklist of the moths and butterflies (Lepidoptera) of Canada and Alaska. Pensoft Publishers. 580 pp.
National English Name:	Indra Swallowtail
National French Name:	
Element National ID:	1091012
Element Global ID:	841118 (go to NatureServe Explorer)
Element Code:	IILEP94101
Endemism Type:	N
Canadian COSEWIC Name:	
Canadian COSEWIC ID:	

Rank/Status

Global Rank:	G4?TNR
National Rank (Canada):	N1 (reviewed 2022)
Subnational Ranks (Canada):	BC=SNR
National Rank (United States):	NNR
Subnational Ranks (United States):	MT=SNR, WY=SNR
National Rank (Mexico):	None
Subnational Ranks (Mexico):	None
Canadian SARA Status:	None
Canadian COSEWIC Status:	None
US ESA Status:	None

Range Map

Date Generated:	August 25, 2023
Version:	1.0
Stage:	Expert Reviewed (National)
Scope:	Canadian
Metadata:	Primary Species - <i>Papilio indra indra</i> Reakirt, 1866; Secondary Species - <i>Papilio indra</i> Reakirt, 1866 Input Records - 1 BAMONA, 1 BC Non-sensitive Element Occurrences, 3 BC Survey Observations, 13 GBIF, 6 iNaturalist.ca, 6 iNaturalist.org; Expert Reviews - BC Experts
Comments:	None Please see spatial data for Ecoshape-level reviewer comments.
Disclaimer:	Please review our methods document before using EBAR. EBAR range data are relatively coarse scale and appropriate for screening and education purposes, but are not intended for all types of applications and analysis. The absence of data in any geographic areas does not necessarily mean that a species is not present. An ecoshape with a presence value does not necessarily mean that a species is present throughout the entire geographic area.
Presence Definitions:	(Please see Comments above for any exceptions) Present - the species is found within the ecoshape based on species observation data, Element Occurrences, Source Features, Canadian Federal Critical Habitat, or expert opinion. Presence Expected - expert opinion the species may be present, or the ecoshape overlapped with a range estimate or a habitat suitability model. Historical - all species occurrence data within the ecoshape contains observation data greater than 40 years old or an Element Occurrence (EO) that was ranked as Extirpated or Historical (EO Rank of H, H?, X or X?).
Usage Type Definitions:	(Please see Comments above for any exceptions) Breeding - the species is thought to breed within the ecoshape based on eBird Breeding and Behaviour Codes or expert opinion. Possible Breeding - the species is probably or possibly breeding within the ecoshape based on eBird, BBA or jurisdiction Breeding and Behaviour Codes, or on expert opinion.
Map Projection:	North America Albers Equal Area Conic (WKID 4269)

Credits

Suggested Citation:

NatureServe Canada, 2020. Ecosystem-based Automated Range (EBAR) for *Papilio indra indra*, Version 1.0, Expert Reviewed (National) (Canadian Scope). Ottawa, Canada. Retrieved from [insert url] on [insert date]

License:

Ecosystem-based Automated Range (EBAR) Project, Copyright NatureServe Canada 2022 under CC BY 4.0 (creativecommons.org/licenses/by/4.0/)

Project Website:

www.natureserve.org/canada/ebar

Contact:

ebbar-kba@natureserve.ca

Input References:

BAMONA - [Lotts, Kelly and Thomas Naberhaus, coordinators. 2017. Butterflies and Moths of North America. Data set exported 2020-06-17 at http://www.butterfliesandmoths.org/. Acknowledgment: Data were provided by the Butterfly and Moth Information Network and the many participants who contribute to its Butterflies and Moths of North America project.](#)

BC Non-sensitive Element Occurrences - British Columbia Conservation Data Centre

BC Survey Observations - British Columbia Conservation Data Centre

GBIF - [Global Biodiversity Information Facility](#)

iNaturalist.ca - [California Academy of Sciences and the National Geographic Society](#)

iNaturalist.org - [California Academy of Sciences and the National Geographic Society](#)

Reviewers by Taxa:

[Reviewers by Taxa](#)