

Psilocarphus brevissimus pop. 2

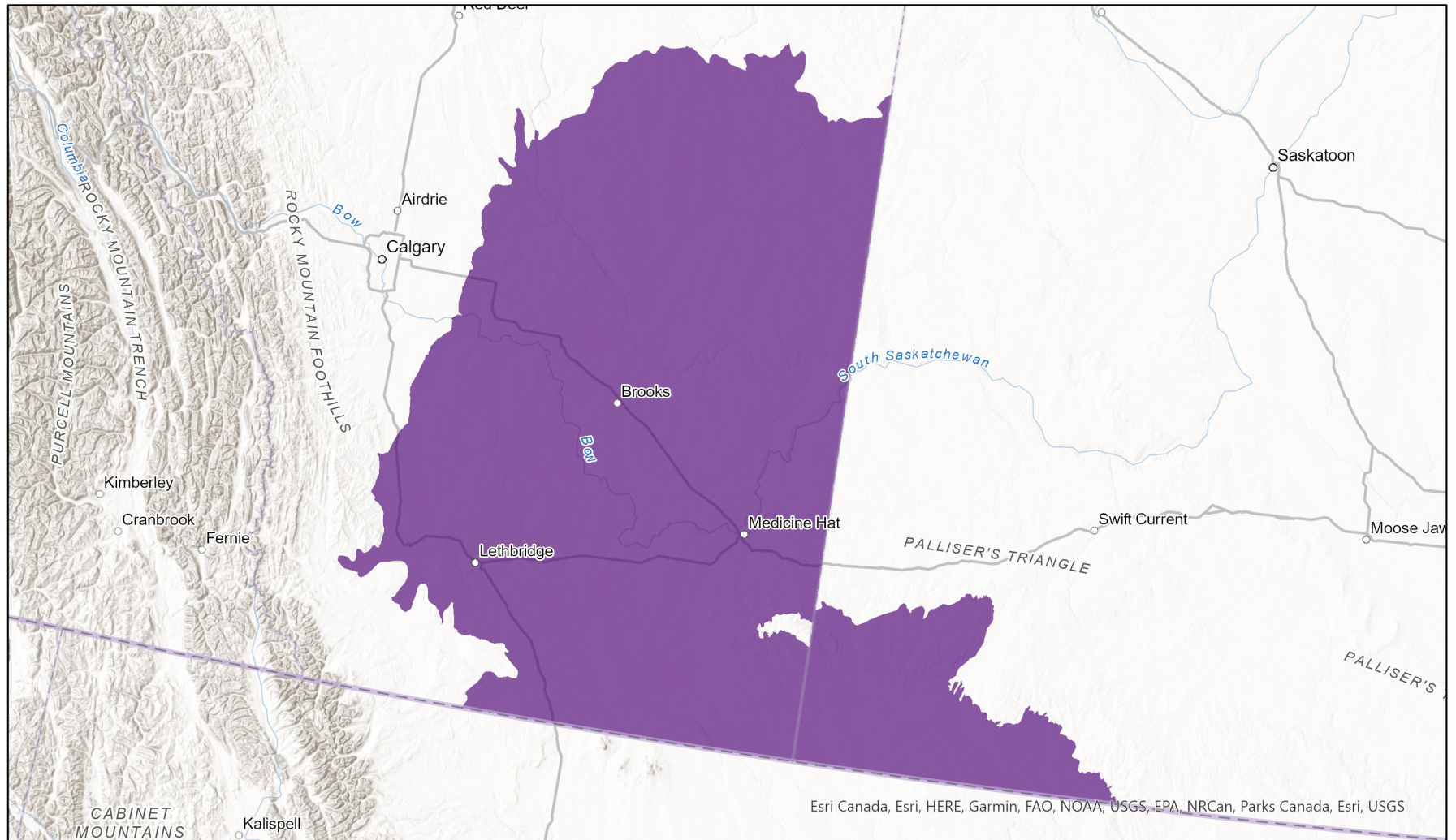


- Present
- Presence Expected
- Historical

Ecosystem-based Automated Range (EBAR)

Date Generated: January 11, 2023; Version: 1.0; Stage: Expert Reviewed; Scope: Global

Synonyms Used: None



0 70 140 km

Input Records - 127 AB Element Occurrences, 88 AB Source Feature Polygons, 1 GBIF, 1 iNaturalist.ca, 9 SK Element Occurrences, 11 SK Source Feature Points, 32 SK

Source Feature Polygons; Expert Reviews - Sarah Vinge-Mazer, Varina Crisfield

Map centre: 110.9623°W 50.5521°N

© NatureServe Canada 2020 under CC BY 4.0

EBAR is relatively coarse scale data and not intended for all applications and analysis. Please see full disclaimer in metadata.

Ecosystem-based Automated Range (EBAR) Metadata

Species

National Scientific Name:	<i>Psilocarphus brevissimus</i> pop. 2
Scientific Name Reference:	Committee on the Status of Endangered Wildlife in Canada (COSEWIC). 2006. COSEWIC Assessment Results, April 2006. Online. Available: http://www.cosewic.ca/index.php/en-ca/assessment-process .
National English Name:	Dwarf Woolly-heads - Prairie population
National French Name:	Psilocarpe nain - Population des Prairies
Element National ID:	828749
Element Global ID:	828748 (go to NatureServe Explorer)
Element Code:	PDAST7R014
Endemism Type:	N
Canadian COSEWIC Name:	
Canadian COSEWIC ID:	932

Rank/Status

Global Rank:	G4TNR
National Rank (Canada):	N2 (reviewed November 14, 2017)
Subnational Ranks (Canada):	Cannot access
National Rank (United States):	Cannot access
Subnational Ranks (United States):	Cannot access
National Rank (Mexico):	Cannot access
Subnational Ranks (Mexico):	Cannot access
Canadian SARA Status:	Special Concern/Préoccupante
Canadian COSEWIC Status:	SC
US ESA Status:	Cannot access

Range Map

Date Generated:	January 11, 2023
Version:	1.0
Stage:	Expert Reviewed
Scope:	Global
Metadata:	Primary Species - <i>Psilocarphus brevissimus</i> pop. 2 ; Secondary Species - <i>Psilocarphus brevissimus</i> Nutt., <i>Psilocarphus brevissimus</i> var. <i>brevissimus</i> Input Records - 127 AB Element Occurrences, 88 AB Source Feature Polygons, 1 GBIF, 1 iNaturalist.ca, 9 SK Element Occurrences, 11 SK Source Feature Points, 32 SK Source Feature Polygons; Expert Reviews - Sarah Vinge-Mazer, Varina Crisfield
Comments:	
Disclaimer:	<p>Please review our methods document before using EBAR.</p> <p>EBAR range data are relatively coarse scale and appropriate for screening and education purposes, but are not intended for all types of applications and analysis.</p> <p>The absence of data in any geographic areas does not necessarily mean that a species is not present.</p> <p>An ecoshape with a presence value does not necessarily mean that a species is present throughout the entire geographic area.</p>
Presence Definitions:	(Please see Comments above for any exceptions)

Present - the species is found within the ecoshape based on species observation data, Element Occurrences, Source Features, Canadian Federal Critical Habitat, or expert opinion.

Presence Expected - expert opinion the species may be present, or the ecoshape overlapped with a range estimate or a habitat suitability model.

Historical - all species occurrence data within the ecoshape contains observation data greater than 40 years old or an Element Occurrence (EO) that was ranked as Extirpated or Historical (EO Rank of H, H?, X or X?).

Usage Type Definitions:

(Please see Comments above for any exceptions)

Breeding - the species is thought to breed within the ecoshape based on eBird Breeding and Behaviour Codes or expert opinion.

Possible Breeding - the species is probably or possibly breeding within the ecoshape based on eBird, BBA or jurisdiction Breeding and Behaviour Codes, or on expert opinion.

Migration - the species is thought to migrate within the ecoshape based on eBird Breeding and Behaviour Codes or expert opinion.

Map Projection:

North America Albers Equal Area Conic (WKID 4269)

Credits

Suggested Citation:

NatureServe Canada, 2020. Ecosystem-based Automated Range (EBAR) for *Psilocarphus brevissimus* pop. 2, Version 1.0, Expert Reviewed (Global Scope). Ottawa, Canada. Retrieved from [insert url] on [insert date]

License:

Ecosystem-based Automated Range (EBAR) Project, Copyright NatureServe Canada 2022 under CC BY 4.0 (creativecommons.org/licenses/by/4.0/)

Project Website:

www.natureserve.org/canada/ebars

Contact:

ebars-kba@natureserve.ca

Input References:

AB Element Occurrences - Alberta Conservation Information Management System, Alberta Environment and Parks, Edmonton

AB Source Feature Polygons - Alberta Conservation Information Management System, Alberta Environment and Parks, Edmonton

GBIF - Global Biodiversity Information Facility (<https://www.gbif.org>)

iNaturalist.ca - California Academy of Sciences and the National Geographic Society (<https://www.inaturalist.ca/>)

SK Element Occurrences - Saskatchewan Conservation Data Centre

SK Source Feature Points - Saskatchewan Conservation Data Centre

SK Source Feature Polygons - Saskatchewan Conservation Data Centre

Reviewers by Taxa:

[Reviewers by Taxa](#)