

# *Eleocharis geniculata* pop. 1

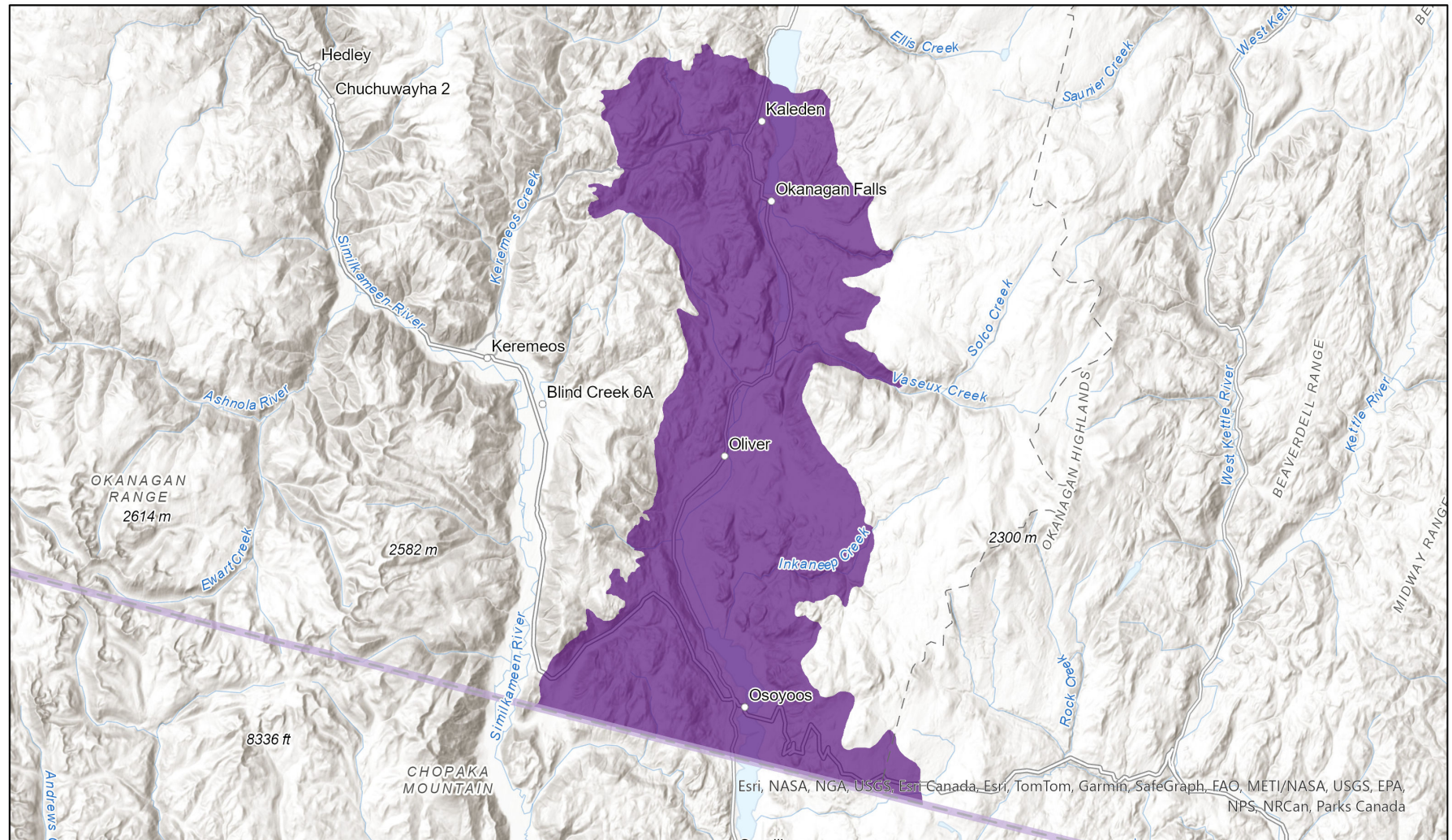
- Present
- Presence Expected
- Historical



## Ecosystem-based Automated Range (EBAR)

Date Generated: January 7, 2022; Version: 1.0; Stage: Expert Reviewed; Scope: Global

Synonyms Used: *Eleocharis geniculata*



0 9.5 19 km

Input Records - 1 BC Non-sensitive Element Occurrences, 2 BC Vascular Plant Observations, 3 BISON, 10 GBIF; Expert Reviews - 1 Anonymous

Map centre: 119.5548°W 49.2024°N

© NatureServe Canada 2020 under CC BY 4.0

EBAR is relatively coarse scale data and not intended for all applications and analysis. Please see full disclaimer in metadata.

## Ecosystem-based Automated Range (EBAR) Metadata

---

### Species

National Scientific Name:	<i>Eleocharis geniculata</i> pop. 1
Scientific Name Reference:	Committee on the Status of Endangered Wildlife in Canada (COSEWIC). 2009a. COSEWIC Assessment Results, April 2009. Online. <a href="http://www.cosewic.ca/index.php/en-ca/assessment-process">http://www.cosewic.ca/index.php/en-ca/assessment-process</a> .
National English Name:	Bent Spike-rush - Southern Mountain population
National French Name:	Éléocharide géniculée - Population des montagnes du Sud
Element National ID:	827940
Element Global ID:	827939 ( <a href="#">go to NatureServe Explorer</a> )
Element Code:	PMCYP090T1
Endemism Type:	N
Canadian COSEWIC Name:	
Canadian COSEWIC ID:	1041

## Rank/Status

Global Rank:	G5TNR
National Rank (Canada):	N1N2 (reviewed 2021)
Subnational Ranks (Canada):	BC=SNR
National Rank (United States):	None
Subnational Ranks (United States):	None
National Rank (Mexico):	None
Subnational Ranks (Mexico):	None
Canadian SARA Status:	Endangered/En voie de disparition (February 04, 2011)
Canadian COSEWIC Status:	Endangered (April 26, 2009)
US ESA Status:	None

## Range Map

Date Generated:	January 07, 2022
Version:	1.0
Stage:	Expert Reviewed
Scope:	Global
Metadata:	Primary Species Name - <i>Eleocharis geniculata</i> pop. 1 ; Synonyms - <i>Eleocharis geniculata</i> (L.) Roemer & J.A. Schultes Input Records - 1 BC Non-sensitive Element Occurrences, 2 BC Vascular Plant Observations, 3 BISON, 10 GBIF; Expert Reviews - 1 Anonymous
Comments:	None <a href="#">Please see spatial data for Ecoshape-level reviewer comments.</a>
Disclaimer:	Please review our <a href="#">methods document</a> before using EBAR.  EBAR range data are relatively coarse scale and appropriate for screening and education purposes, but are not intended for all types of applications and analysis.  The absence of data in any geographic areas does not necessarily mean that a species is not present.  An ecoshape with a presence value does not necessarily mean that a species is present throughout the entire geographic area.
Presence Definitions:	(Please see Comments above for any exceptions)  Present - the species is found within the ecoshape based on species observation data, Element Occurrences, Source Features, Canadian Federal Critical Habitat, or expert opinion.  Presence Expected - expert opinion the species may be present, or the ecoshape overlapped with a range estimate or a habitat suitability model.  Historical - all species occurrence data within the ecoshape contains observation data greater than 40 years old or an Element Occurrence (EO) that was ranked as Extirpated or Historical (EO Rank of H, H?, X or X?).
Usage Type Definitions:	(Please see Comments above for any exceptions)  Breeding - the species is thought to breed within the ecoshape based on eBird Breeding and Behaviour Codes or expert opinion.  Possible Breeding - the species is probably or possibly breeding within the ecoshape based on eBird, BBA or jurisdiction Breeding and Behaviour Codes, or on expert opinion.
Map Projection:	North America Albers Equal Area Conic (WKID 4269)

## Credits

Suggested Citation:	NatureServe Canada, 2020. Ecosystem-based Automated Range (EBAR) for Eleocharis geniculata pop. 1, Version 1.0, Expert Reviewed (Global Scope). Ottawa, Canada. Retrieved from [insert url] on [insert date]
License:	Ecosystem-based Automated Range (EBAR) Project, Copyright NatureServe Canada 2022 under CC BY 4.0 ( <a href="https://creativecommons.org/licenses/by/4.0/">creativecommons.org/licenses/by/4.0/</a> )
Project Website:	<a href="http://www.natureserve.org/canada/ebars">www.natureserve.org/canada/ebars</a>
Contact:	<a href="mailto:ebars-kba@natureserve.ca">ebars-kba@natureserve.ca</a>
Input References:	BC Non-sensitive Element Occurrences - British Columbia Conservation Data Centre BC Vascular Plant Observations - British Columbia Conservation Data Centre BISON - <a href="https://www.usgs.gov/centers/national-geo-spatial">United States Geological Survey</a> GBIF - <a href="https://www.gbif.org/">Global Biodiversity Information Facility</a>
Reviewers by Taxa:	<a href="#">Reviewers by Taxa</a>