

Germaria angustata

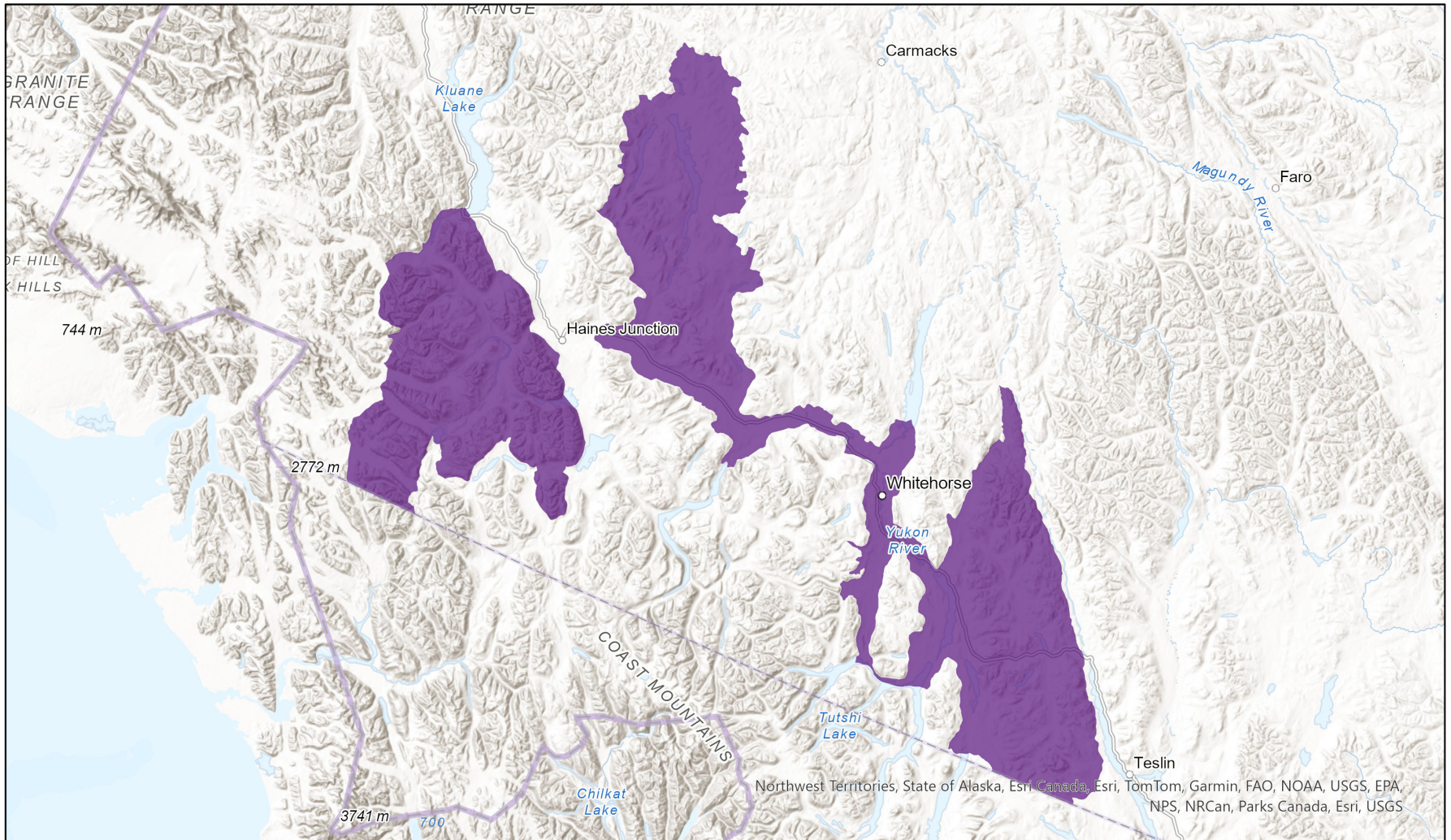


Ecosystem-based Automated Range (EBAR)

Date Generated: February 18, 2023; Version: 1.0; Stage: Expert Reviewed (National); Scope: North American

Synonyms Used: None

- Present
- Presence Expected
- Historical



0 40 80 km

Input Records - 4 GBIF, 2 iNaturalist.ca, 31 Royal British Columbia Museum, 13 YT Element Occurrences, 5 YT Source Feature Points, 17 YT Source Feature Polygons; Expert Reviews - Joel Gibson

Map centre: 136.246° W 60.7266° N
 © NatureServe Canada 2020 under CC BY 4.0

EBAR is relatively coarse scale data and not intended for all applications and analysis. Please see full disclaimer in metadata.

Ecosystem-based Automated Range (EBAR) Metadata

Species

National Scientific Name:	<i>Germaria angustata</i> (Zetterstedt, 1844)
Scientific Name Reference:	Evenhuis, N.L. and T. Pape. 2020. Systema Dipteroorum, Version 2.6. 24 May 2020 - last update. Online. Available: http://diptera.org/
National English Name:	Dune Tachinid Fly
National French Name:	Mouche tachinide des dunes
Element National ID:	817106
Element Global ID:	817105 (go to NatureServe Explorer)
Element Code:	IIDIP7L010
Endemism Type:	N
Canadian COSEWIC Name:	
Canadian COSEWIC ID:	1143

Rank/Status

Global Rank:	G4G5 (reviewed February 12, 2009)
National Rank (Canada):	N3 (reviewed 2011)
Subnational Ranks (Canada):	YT=S3
National Rank (United States):	None
Subnational Ranks (United States):	None
National Rank (Mexico):	None
Subnational Ranks (Mexico):	None
Canadian SARA Status:	Special Concern/Préoccupante (February 03, 2017)
Canadian COSEWIC Status:	Special Concern (May 06, 2011)
US ESA Status:	None

Range Map

Date Generated:	February 18, 2023
Version:	1.0
Stage:	Expert Reviewed (National)
Scope:	North American
Metadata:	Primary Species - <i>Germaria angustata</i> (Zetterstedt, 1844) Input Records - 4 GBIF, 2 iNaturalist.ca, 31 Royal British Columbia Museum, 13 YT Element Occurrences, 5 YT Source Feature Points, 17 YT Source Feature Polygons; Expert Reviews - Joel Gibson
Comments:	None Please see spatial data for Ecoshape-level reviewer comments.
Disclaimer:	Please review our methods document before using EBAR. EBAR range data are relatively coarse scale and appropriate for screening and education purposes, but are not intended for all types of applications and analysis. The absence of data in any geographic areas does not necessarily mean that a species is not present. An ecoshape with a presence value does not necessarily mean that a species is present throughout the entire geographic area.
Presence Definitions:	(Please see Comments above for any exceptions) Present - the species is found within the ecoshape based on species observation data, Element Occurrences, Source Features, Canadian Federal Critical Habitat, or expert opinion. Presence Expected - expert opinion the species may be present, or the ecoshape overlapped with a range estimate or a habitat suitability model. Historical - all species occurrence data within the ecoshape contains observation data greater than 40 years old or an Element Occurrence (EO) that was ranked as Extirpated or Historical (EO Rank of H, H?, X or X?).
Usage Type Definitions:	(Please see Comments above for any exceptions) Breeding - the species is thought to breed within the ecoshape based on eBird Breeding and Behaviour Codes or expert opinion. Possible Breeding - the species is probably or possibly breeding within the ecoshape based on eBird, BBA or jurisdiction Breeding and Behaviour Codes, or on expert opinion.
Map Projection:	North America Albers Equal Area Conic (WKID 4269)

Credits

Suggested Citation:	NatureServe Canada, 2020. Ecosystem-based Automated Range (EBAR) for <i>Germaria angustata</i> , Version 1.0, Expert Reviewed (National) (North American Scope). Ottawa, Canada. Retrieved from [insert url] on [insert date]
License:	Ecosystem-based Automated Range (EBAR) Project, Copyright NatureServe Canada 2022 under CC BY 4.0 (creativecommons.org/licenses/by/4.0/)
Project Website:	www.natureserve.org/canada/ebar
Contact:	ebar-kba@natureserve.ca
Input References:	GBIF - Global Biodiversity Information Facility iNaturalist.ca - California Academy of Sciences and the National Geographic Society Royal British Columbia Museum - RBCM (https://royalbcmuseum.bc.ca/) YT Element Occurrences - Yukon Conservation Data Centre YT Source Feature Points - Yukon Conservation Data Centre YT Source Feature Polygons - Yukon Conservation Data Centre
Reviewers by Taxa:	Reviewers by Taxa