

Hypsiglena chlorophaea

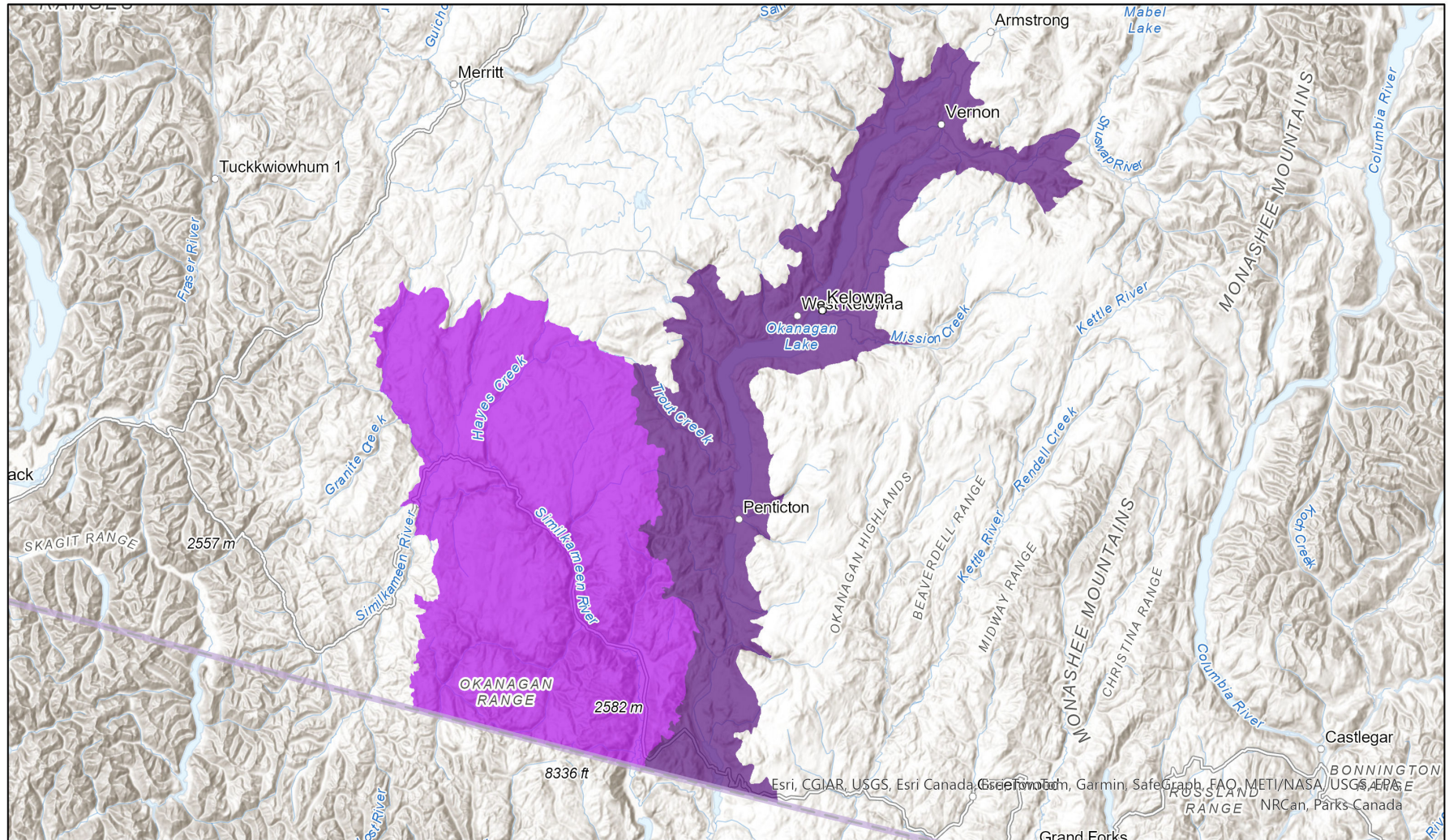


- Present
- Presence Expected
- Historical

Ecosystem-based Automated Range (EBAR)

Date Generated: January 26, 2022; Version: 1.0; Stage: Expert Reviewed (National); Scope: Canadian

Synonyms Used: *Hypsiglena chlorophaea deserticola*



0 25 50 km

Map centre: 119.6975° W 49.6443° N

© NatureServe Canada 2020 under CC BY 4.0

EBAR is relatively coarse scale data and not intended for all applications and analysis. Please see full disclaimer in metadata.

Input Records - 72 BC Incidental Observations, 11 BC Non-sensitive Element Occurrences, 2 BC Survey Observations, 2 GBIF; Expert Reviews - 1 Anonymous

Ecosystem-based Automated Range (EBAR) Metadata

Species

National Scientific Name:	<i>Hypsiglena chlorophaea</i> Cope, 1860
Scientific Name Reference:	Crother, B. I. (editor). 2017. Scientific and standard English names of amphibians and reptiles of North America north of Mexico, with comments regarding confidence in our understanding. 8th edition. SSAR Herpetological Circular 43:1-104. [Updates in SSAR North American Species Names Database at: https://ssarherps.org/cndb]
National English Name:	Desert Nightsnake
National French Name:	Couleuvre nocturne; Couleuvre nocturne du désert
Element National ID:	817010
Element Global ID:	817007 (go to NatureServe Explorer)
Element Code:	ARADB18020
Endemism Type:	N
Canadian COSEWIC Name:	
Canadian COSEWIC ID:	681

Rank/Status

Global Rank:	G5 (reviewed August 12, 2016)
National Rank (Canada):	N2 (reviewed 2024)
Subnational Ranks (Canada):	BC=S2
National Rank (United States):	N5 (reviewed 2008)
Subnational Ranks (United States):	AZ=S5, CA=SNR, CO=S2, ID=S3, NM=S2, NN=S4, NV=S5, OR=S3, UT=S3, WA=S3
National Rank (Mexico):	None
Subnational Ranks (Mexico):	None
Canadian SARA Status:	Endangered/En voie de disparition (June 05, 2003)
Canadian COSEWIC Status:	Endangered (May 06, 2011)
US ESA Status:	None

Range Map

Date Generated:	January 26, 2022
Version:	1.0
Stage:	Expert Reviewed (National)
Scope:	Canadian
Metadata:	<p>Primary Species Name - <i>Hypsiglena chlorophaea</i> Cope, 1860; Synonyms - <i>Hypsiglena chlorophaea deserticola</i> (Tanner, 1944)</p> <p>Input Records - 72 BC Incidental Observations, 11 BC Non-sensitive Element Occurrences, 2 BC Survey Observations, 2 GBIF; Expert Reviews - 1 Anonymous</p>
Comments:	<p>None</p> <p>Please see spatial data for Ecoshape-level reviewer comments.</p>
Disclaimer:	<p>Please review our methods document before using EBAR.</p> <p>EBAR range data are relatively coarse scale and appropriate for screening and education purposes, but are not intended for all types of applications and analysis.</p> <p>The absence of data in any geographic areas does not necessarily mean that a species is not present.</p> <p>An ecoshape with a presence value does not necessarily mean that a species is present throughout the entire geographic area.</p>
Presence Definitions:	<p>(Please see Comments above for any exceptions)</p> <p>Present - the species is found within the ecoshape based on species observation data, Element Occurrences, Source Features, Canadian Federal Critical Habitat, or expert opinion.</p> <p>Presence Expected - expert opinion the species may be present, or the ecoshape overlapped with a range estimate or a habitat suitability model.</p> <p>Historical - all species occurrence data within the ecoshape contains observation data greater than 40 years old or an Element Occurrence (EO) that was ranked as Extirpated or Historical (EO Rank of H, H?, X or X?).</p>
Usage Type Definitions:	<p>(Please see Comments above for any exceptions)</p> <p>Breeding - the species is thought to breed within the ecoshape based on eBird Breeding and Behaviour Codes or expert opinion.</p> <p>Possible Breeding - the species is probably or possibly breeding within the ecoshape based on eBird, BBA or jurisdiction Breeding and Behaviour Codes, or on expert opinion.</p>
Map Projection:	North America Albers Equal Area Conic (WKID 4269)

Credits

Suggested Citation:	NatureServe Canada, 2020. Ecosystem-based Automated Range (EBAR) for <i>Hypsiglena chlorophaea</i> , Version 1.0, Expert Reviewed (National) (Canadian Scope). Ottawa, Canada. Retrieved from [insert url] on [insert date]
License:	Ecosystem-based Automated Range (EBAR) Project, Copyright NatureServe Canada 2022 under CC BY 4.0 (creativecommons.org/licenses/by/4.0/)
Project Website:	www.natureserve.org/canada/ebar
Contact:	ebbar-kba@natureserve.ca
Input References:	BC Non-sensitive Element Occurrences - British Columbia Conservation Data Centre BC Survey Observations - British Columbia Conservation Data Centre BC UNVETTED Incidental Observations - British Columbia Conservation Data Centre GBIF - Global Biodiversity Information Facility
Reviewers by Taxa:	Reviewers by Taxa