

## *Chrysemys picta* pop. 2

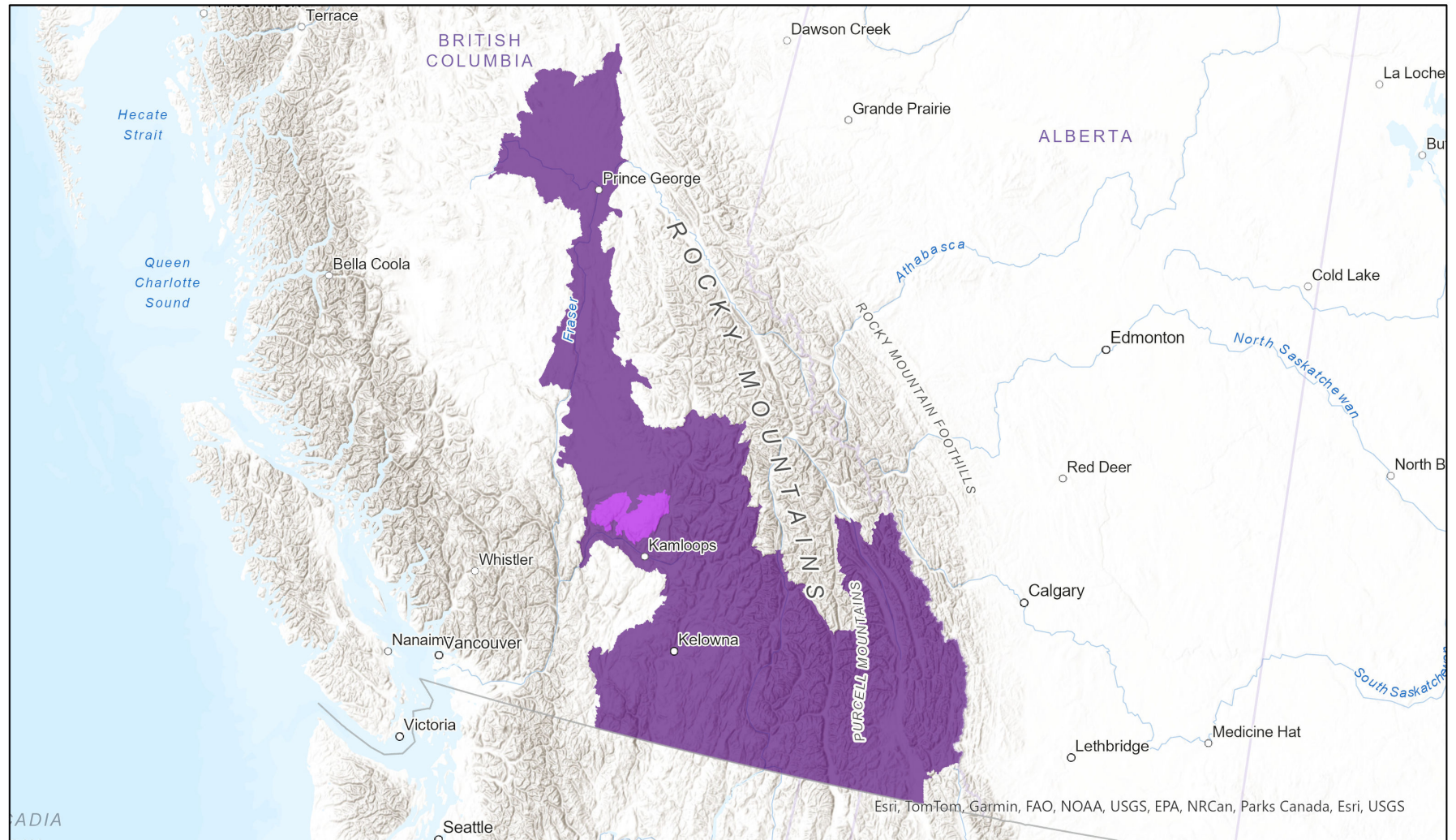
- Present
- Presence Expected
- Historical



### Ecosystem-based Automated Range (EBAR)

Date Generated: February 23, 2022; Version: 1.0; Stage: Expert Reviewed; Scope: Global

Synonyms Used: None



Input Records - 37 BC Incidental Observations, 118 BC Non-sensitive Element Occurrences, 24 BC Survey Observations; Expert Reviews - Ian Adams, 1 Anonymous

Map centre: 119.5479°W 52.0869°N

© NatureServe Canada 2020 under CC BY 4.0

EBAR is relatively coarse scale data and not intended for all applications and analysis. Please see full disclaimer in metadata.

## Ecosystem-based Automated Range (EBAR) Metadata

---

### Species

|                            |   |
|----------------------------|---|
| National Scientific Name:  | <i>Chrysemys picta pop. 2</i>   |
| Scientific Name Reference: | Committee on the Status of Endangered Wildlife in Canada (COSEWIC). 2016a. COSEWIC Assessment Results, November 2016. Committee on the Status of Endangered Wildlife in Canada. |
| National English Name:     | Western Painted Turtle - Intermountain - Rocky Mountain population  |
| National French Name:      | Tortue peinte de l'Ouest - Population intramontagnarde - des Rocheuses  |
| Element National ID:       | 793128  |
| Element Global ID:         | 793127 ( <a href="#">go to NatureServe Explorer</a> )   |
| Element Code:              | ARAAD01016  |
| Endemism Type:             | N   |
| Canadian COSEWIC Name:     |   |
| Canadian COSEWIC ID:       | 903   |

## Rank/Status

|                                    |  |
|------------------------------------|--|
| Global Rank:                       | G5T2T3Q (reviewed January 02, 2008)              |
| National Rank (Canada):            | N3? (reviewed 2019)                              |
| Subnational Ranks (Canada):        | BC=S3?   |
| National Rank (United States):     | None   |
| Subnational Ranks (United States): | None   |
| National Rank (Mexico):            | None   |
| Subnational Ranks (Mexico):        | None   |
| Canadian SARA Status:              | Special Concern/Préoccupante (December 13, 2007) |
| Canadian COSEWIC Status:           | Special Concern (November 27, 2016)              |
| US ESA Status:                     | None   |

## Range Map

|                         |   |
|-------------------------|---|
| Date Generated:         | February 23, 2022   |
| Version:                | 1.0   |
| Stage:                  | Expert Reviewed   |
| Scope:                  | Global  |
| Metadata:               | Primary Species Name - <i>Chrysemys picta pop. 2</i><br>Input Records - 37 BC Incidental Observations, 118 BC Non-sensitive Element Occurrences, 24 BC Survey Observations;<br>Expert Reviews - Ian Adams, 1 Anonymous  |
| Comments:               | None<br><a href="#">Please see spatial data for Ecoshape-level reviewer comments.</a>   |
| Disclaimer:             | Please review our <a href="#">methods document</a> before using EBAR.<br><br>EBAR range data are relatively coarse scale and appropriate for screening and education purposes, but are not intended for all types of applications and analysis.<br><br>The absence of data in any geographic areas does not necessarily mean that a species is not present.<br><br>An ecoshape with a presence value does not necessarily mean that a species is present throughout the entire geographic area.   |
| Presence Definitions:   | (Please see Comments above for any exceptions)<br><br>Present - the species is found within the ecoshape based on species observation data, Element Occurrences, Source Features, Canadian Federal Critical Habitat, or expert opinion.<br><br>Presence Expected - expert opinion the species may be present, or the ecoshape overlapped with a range estimate or a habitat suitability model.<br><br>Historical - all species occurrence data within the ecoshape contains observation data greater than 40 years old or an Element Occurrence (EO) that was ranked as Extirpated or Historical (EO Rank of H, H?, X or X?). |
| Usage Type Definitions: | (Please see Comments above for any exceptions)<br><br>Breeding - the species is thought to breed within the ecoshape based on eBird Breeding and Behaviour Codes or expert opinion.<br><br>Possible Breeding - the species is probably or possibly breeding within the ecoshape based on eBird, BBA or jurisdiction Breeding and Behaviour Codes, or on expert opinion.   |
| Map Projection:         | North America Albers Equal Area Conic (WKID 4269)   |

## Credits

|                            |   |
|----------------------------|---|
| <b>Suggested Citation:</b> | NatureServe Canada, 2020. Ecosystem-based Automated Range (EBAR) for <i>Chrysemys picta</i> pop. 2, Version 1.0, Expert Reviewed (Global Scope). Ottawa, Canada. Retrieved from [insert url] on [insert date]                             |
| <b>License:</b>            | Ecosystem-based Automated Range (EBAR) Project, Copyright NatureServe Canada 2022 under CC BY 4.0 ( <a href="https://creativecommons.org/licenses/by/4.0/">creativecommons.org/licenses/by/4.0/</a> )                                     |
| <b>Project Website:</b>    | <a href="http://www.natureserve.org/canada/ebars">www.natureserve.org/canada/ebars</a>  |
| <b>Contact:</b>            | <a href="mailto:ebars-kba@natureserve.ca">ebars-kba@natureserve.ca</a>  |
| <b>Input References:</b>   | BC Non-sensitive Element Occurrences - British Columbia Conservation Data Centre<br>BC Survey Observations - British Columbia Conservation Data Centre<br>BC UNVETTED Incidental Observations - British Columbia Conservation Data Centre |
| <b>Reviewers by Taxa:</b>  | <a href="#">Reviewers by Taxa</a>   |