

Cicindela parowana wallisi

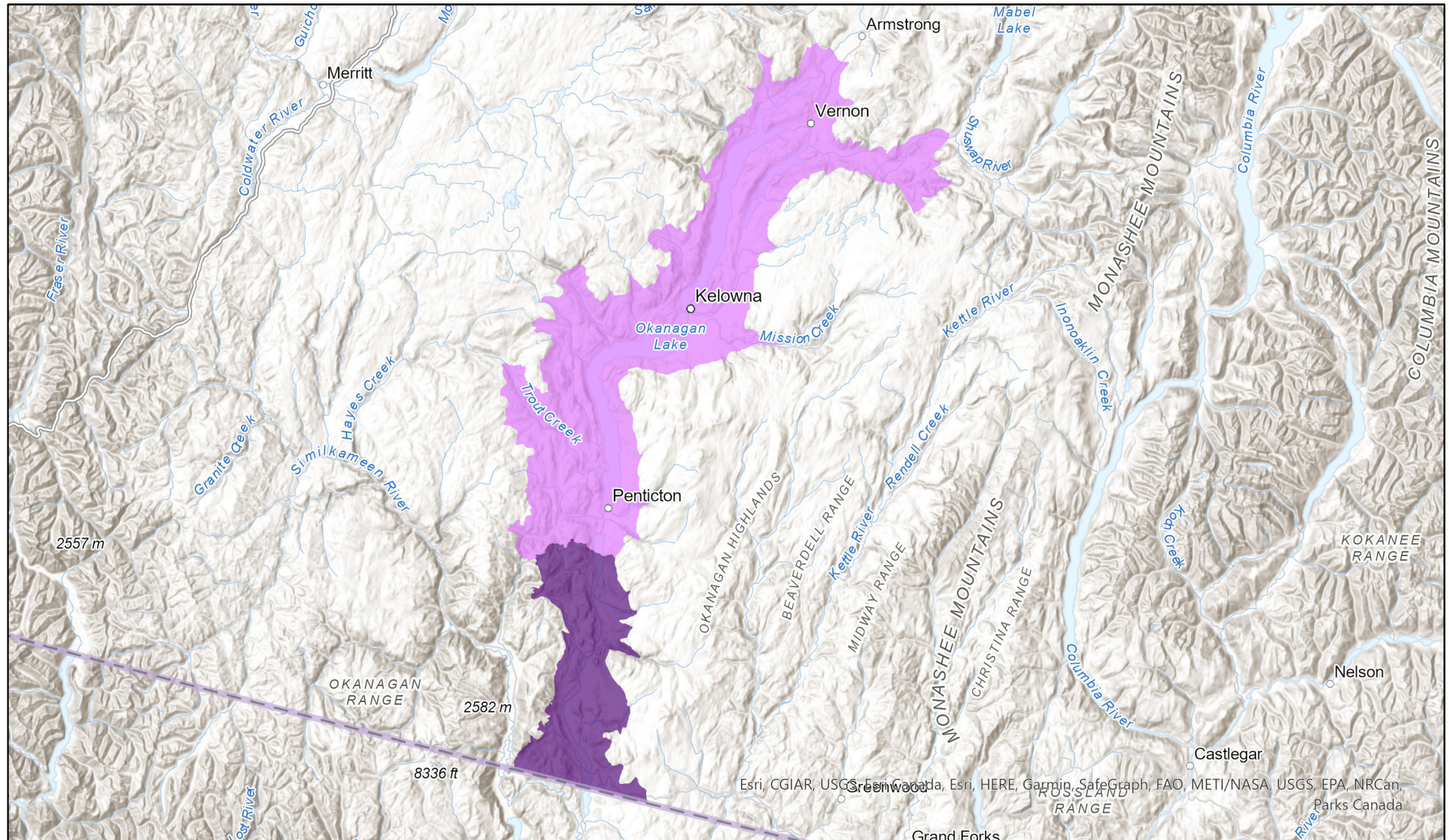


- Present
- Presence Expected
- Historical

Ecosystem-based Automated Range (EBAR)

Date Generated: February 17, 2023; Version: 1.0; Stage: Expert Reviewed (National); Scope: Canadian

Synonyms Used: None



0 25 50 km

Input Records - 4 BC Non-sensitive Element Occurrences, 5 GBIF, 1 iNaturalist.ca, 1 Royal British Columbia Museum; Expert Reviews - Joel Gibson, 1 Anonymous

Map centre: 119.3028°W 49.7024°N

© NatureServe Canada 2020 under CC BY 4.0

EBAR is relatively coarse scale data and not intended for all applications and analysis. Please see full disclaimer in metadata.

Ecosystem-based Automated Range (EBAR) Metadata

Species

National Scientific Name:	<i>Cicindela parowana wallisi</i> Calder, 1922
Scientific Name Reference:	Bousquet, Y., P. Bouchard, A.E. Davies, and D.S. Sikes. 2013. Checklist of beetles (Coleoptera) of Canada and Alaska, second edition. Pensoft Series Faunistica No 109. [Downloadable checklist available: Bousquet, Y., P. Bouchard, A.E. Davies, and D.S. Sikes. 2013. Data associated with Checklist of beetles (Coleoptera) of Canada and Alaska. Second Edition. Data Paper. ZooKeys 360:1-44. http://dx.doi.org/10.5886/998db52a]
National English Name:	Wallis' Dark Saltflat Tiger Beetle
National French Name:	Cicindèle de Wallis
Element National ID:	787750
Element Global ID:	786197 (go to NatureServe Explorer)
Element Code:	IICOL023H4
Endemism Type:	N
Canadian COSEWIC Name:	
Canadian COSEWIC ID:	1066

Rank/Status

Global Rank:	G4T2T4 (reviewed August 23, 2005)
National Rank (Canada):	N1 (reviewed 2022)
Subnational Ranks (Canada):	BC=SNR
National Rank (United States):	N2N4 (reviewed 2005)
Subnational Ranks (United States):	OR=SNR, WA=SNR
National Rank (Mexico):	None
Subnational Ranks (Mexico):	None
Canadian SARA Status:	Endangered/En voie de disparition (June 20, 2012)
Canadian COSEWIC Status:	Endangered (November 27, 2009)
US ESA Status:	None

Range Map

Date Generated:	February 17, 2023
Version:	1.0
Stage:	Expert Reviewed (National)
Scope:	Canadian
Metadata:	Primary Species - <i>Cicindela parowana wallisi</i> Calder, 1922; Secondary Species - <i>Cicindela parowana</i> Wickham, 1905 Input Records - 4 BC Non-sensitive Element Occurrences, 5 GBIF, 1 iNaturalist.ca, 1 Royal British Columbia Museum; Expert Reviews - Joel Gibson, 1 Anonymous
Comments:	None Please see spatial data for Ecoshape-level reviewer comments.
Disclaimer:	Please review our methods document before using EBAR. EBAR range data are relatively coarse scale and appropriate for screening and education purposes, but are not intended for all types of applications and analysis. The absence of data in any geographic areas does not necessarily mean that a species is not present. An ecoshape with a presence value does not necessarily mean that a species is present throughout the entire geographic area.
Presence Definitions:	(Please see Comments above for any exceptions) Present - the species is found within the ecoshape based on species observation data, Element Occurrences, Source Features, Canadian Federal Critical Habitat, or expert opinion. Presence Expected - expert opinion the species may be present, or the ecoshape overlapped with a range estimate or a habitat suitability model. Historical - all species occurrence data within the ecoshape contains observation data greater than 40 years old or an Element Occurrence (EO) that was ranked as Extirpated or Historical (EO Rank of H, H?, X or X?).
Usage Type Definitions:	(Please see Comments above for any exceptions) Breeding - the species is thought to breed within the ecoshape based on eBird Breeding and Behaviour Codes or expert opinion. Possible Breeding - the species is probably or possibly breeding within the ecoshape based on eBird, BBA or jurisdiction Breeding and Behaviour Codes, or on expert opinion.
Map Projection:	North America Albers Equal Area Conic (WKID 4269)

Credits

Suggested Citation:

NatureServe Canada, 2020. Ecosystem-based Automated Range (EBAR) for *Cicindela parowana wallisi*, Version 1.0, Expert Reviewed (National) (Canadian Scope). Ottawa, Canada. Retrieved from [insert url] on [insert date]

License:

Ecosystem-based Automated Range (EBAR) Project, Copyright NatureServe Canada 2022 under CC BY 4.0 (creativecommons.org/licenses/by/4.0/)

Project Website:

www.natureserve.org/canada/ebar

Contact:

ebbar-kba@natureserve.ca

Input References:

BC Non-sensitive Element Occurrences - British Columbia Conservation Data Centre

GBIF - Global Biodiversity Information Facility (<https://www.gbif.org>)

iNaturalist.ca - California Academy of Sciences and the National Geographic Society (<https://www.inaturalist.ca/>)

Royal British Columbia Museum - RBCM (<https://royalbcmuseum.bc.ca/>) (<https://royalbcmuseum.bc.ca/>)

Reviewers by Taxa:

[Reviewers by Taxa](#)