

# *Cicindela parowana wallisi*

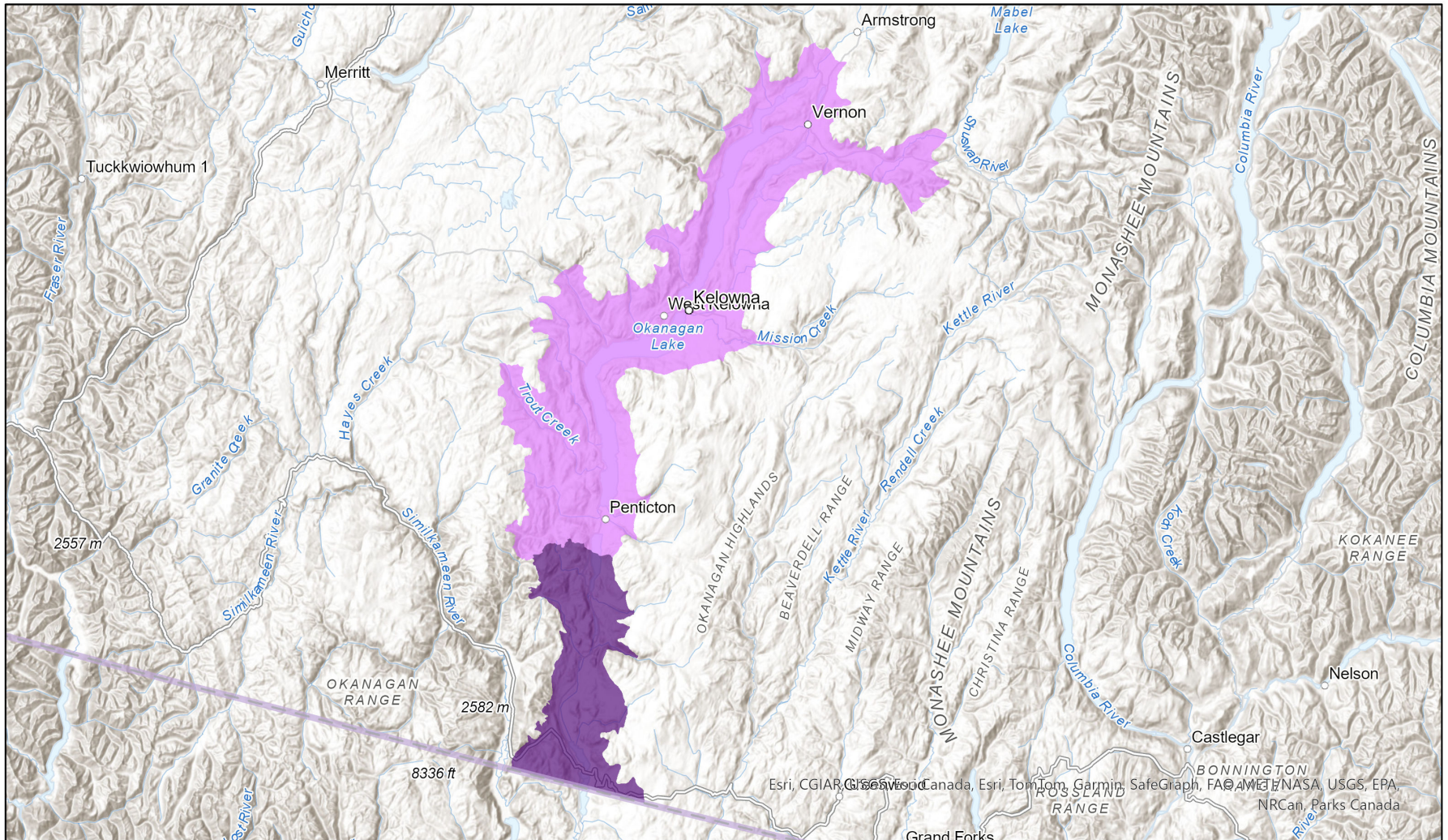


- Present
- Presence Expected
- Historical

## Ecosystem-based Automated Range (EBAR)

Date Generated: February 17, 2023; Version: 1.0; Stage: Expert Reviewed (National); Scope: Canadian

Synonyms Used: None



0 25 50 km

Input Records - 4 BC Non-sensitive Element Occurrences, 5 GBIF, 1 iNaturalist.ca, 1 Royal British Columbia Museum; Expert Reviews - Joel Gibson, 1 Anonymous

Map centre: 119.3028° W 49.7024° N  
 © NatureServe Canada 2020 under CC BY 4.0

EBAR is relatively coarse scale data and not intended for all applications and analysis. Please see full disclaimer in metadata.

## Ecosystem-based Automated Range (EBAR) Metadata

---

### Species

National Scientific Name:	<i>Cicindela parowana wallisi</i> Calder, 1922
Scientific Name Reference:	Bousquet, Y., P. Bouchard, A.E. Davies, and D.S. Sikes. 2013. Checklist of beetles (Coleoptera) of Canada and Alaska, second edition. Pensoft Series Faunistica No 109. [Downloadable checklist available: Bousquet, Y., P. Bouchard, A.E. Davies, and D.S. Sikes. 2013. Data associated with Checklist of beetles (Coleoptera) of Canada and Alaska. Second Edition. Data Paper. ZooKeys 360:1-44. <a href="http://dx.doi.org/10.5886/998dbs2a">http://dx.doi.org/10.5886/998dbs2a</a> ]
National English Name:	Wallis' Dark Saltflat Tiger Beetle
National French Name:	Cicindèle de Wallis
Element National ID:	787750
Element Global ID:	786197 ( <a href="#">go to NatureServe Explorer</a> )
Element Code:	IICOL023H4
Endemism Type:	N
Canadian COSEWIC Name:	
Canadian COSEWIC ID:	1066

## Rank/Status

<b>Global Rank:</b>	G4T2T4 (reviewed August 23, 2005)
<b>National Rank (Canada):</b>	N1 (reviewed 2022)
<b>Subnational Ranks (Canada):</b>	BC=SNR
<b>National Rank (United States):</b>	N2N4 (reviewed 2005)
<b>Subnational Ranks (United States):</b>	OR=SNR, WA=SNR
<b>National Rank (Mexico):</b>	None
<b>Subnational Ranks (Mexico):</b>	None
<b>Canadian SARA Status:</b>	Endangered/En voie de disparition (June 20, 2012)
<b>Canadian COSEWIC Status:</b>	Endangered (November 27, 2009)
<b>US ESA Status:</b>	None

## Range Map

<b>Date Generated:</b>	February 17, 2023
<b>Version:</b>	1.0
<b>Stage:</b>	Expert Reviewed (National)
<b>Scope:</b>	Canadian
<b>Metadata:</b>	Primary Species - <i>Cicindela parowana wallisi</i> Calder, 1922; Secondary Species - <i>Cicindela parowana</i> Wickham, 1905 Input Records - 4 BC Non-sensitive Element Occurrences, 5 GBIF, 1 iNaturalist.ca, 1 Royal British Columbia Museum; Expert Reviews - Joel Gibson, 1 Anonymous
<b>Comments:</b>	None <a href="#">Please see spatial data for Ecoshape-level reviewer comments.</a>
<b>Disclaimer:</b>	Please review our <a href="#">methods document</a> before using EBAR.  EBAR range data are relatively coarse scale and appropriate for screening and education purposes, but are not intended for all types of applications and analysis.  The absence of data in any geographic areas does not necessarily mean that a species is not present.  An ecoshape with a presence value does not necessarily mean that a species is present throughout the entire geographic area.
<b>Presence Definitions:</b>	(Please see Comments above for any exceptions)  Present - the species is found within the ecoshape based on species observation data, Element Occurrences, Source Features, Canadian Federal Critical Habitat, or expert opinion.  Presence Expected - expert opinion the species may be present, or the ecoshape overlapped with a range estimate or a habitat suitability model.  Historical - all species occurrence data within the ecoshape contains observation data greater than 40 years old or an Element Occurrence (EO) that was ranked as Extirpated or Historical (EO Rank of H, H?, X or X?).
<b>Usage Type Definitions:</b>	(Please see Comments above for any exceptions)  Breeding - the species is thought to breed within the ecoshape based on eBird Breeding and Behaviour Codes or expert opinion.  Possible Breeding - the species is probably or possibly breeding within the ecoshape based on eBird, BBA or jurisdiction Breeding and Behaviour Codes, or on expert opinion.
<b>Map Projection:</b>	North America Albers Equal Area Conic (WKID 4269)

## Credits

**Suggested Citation:**

NatureServe Canada, 2020. Ecosystem-based Automated Range (EBAR) for *Cicindela parowana wallisi*, Version 1.0, Expert Reviewed (National) (Canadian Scope). Ottawa, Canada. Retrieved from [insert url] on [insert date]

**License:**

Ecosystem-based Automated Range (EBAR) Project, Copyright NatureServe Canada 2022 under CC BY 4.0 ([creativecommons.org/licenses/by/4.0/](https://creativecommons.org/licenses/by/4.0/))

**Project Website:**

[www.natureserve.org/canada/ebar](http://www.natureserve.org/canada/ebar)

**Contact:**

[ebar-kba@natureserve.ca](mailto:ebar-kba@natureserve.ca)

**Input References:**

BC Non-sensitive Element Occurrences - British Columbia Conservation Data Centre

GBIF - [Global Biodiversity Information Facility](https://www.gbif.org/)

iNaturalist.ca (original coordinates for obscured records) - [California Academy of Sciences and the National Geographic Society](https://www.inaturalist.ca/)

Royal British Columbia Museum - [RBCM \(https://royalbcmuseum.bc.ca/\)](https://royalbcmuseum.bc.ca/)

**Reviewers by Taxa:**

[Reviewers by Taxa](#)