

# *Sabulina litorea*

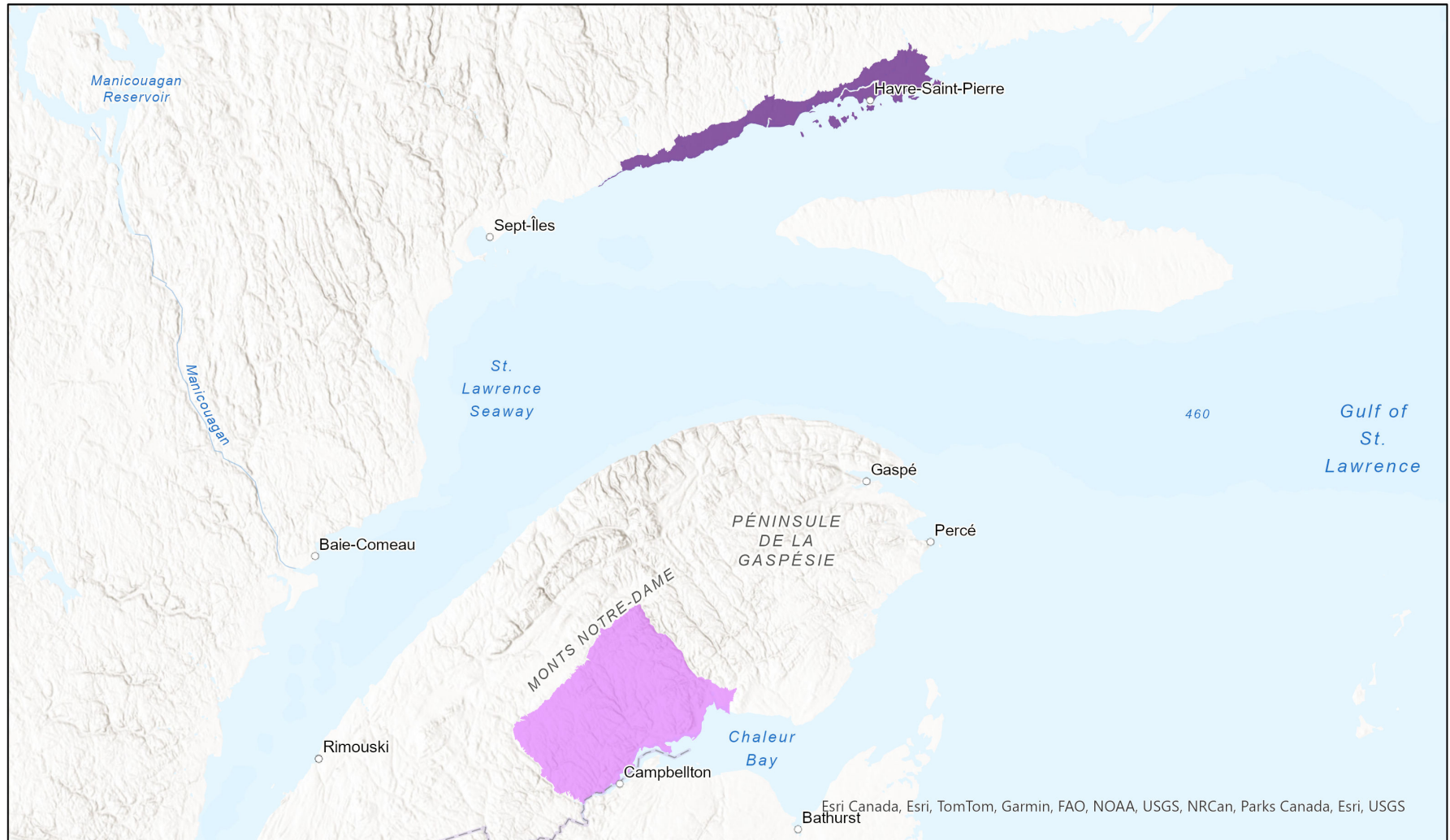


## Ecosystem-based Automated Range (EBAR)

- Present
- Presence Expected
- Historical

Date Generated: April 2, 2024; Version: 1.0; Stage: Expert Reviewed; Scope: Global

Synonyms Used: None



0 50 100 km

Input Records - 3 ON Observations and Source Features, 4 QC Element Occurrences; Expert Reviews - Wasyl Bakowsky, Pierre Morisset, 2 Anonymous

Map centre: 65.2419°W 49.2221°N  
© NatureServe Canada 2020 under CC BY 4.0

EBAR is relatively coarse scale data and not intended for all applications and analysis. Please see full disclaimer in metadata.

## Ecosystem-based Automated Range (EBAR) Metadata

---

### Species

National Scientific Name:	<i>Sabulina litorea</i> (Fernald) Rydberg
Scientific Name Reference:	Brouillet, L., F. Coursol, S.J. Meades, M. Favreau, M. Anions, P. Bélisle, and P. Desmet. 2022. VASCAN, the Database of Vascular Plants of Canada. Online. Available: <a href="http://data.canadensys.net/vascan/">http://data.canadensys.net/vascan/</a> (Accessed 2022).
National English Name:	Seashore Stitchwort
National French Name:	Minuartie des grèves; Sabline des grèves
Element National ID:	785631
Element Global ID:	785630 ( <a href="#">go to NatureServe Explorer</a> )
Element Code:	PDCAR0G1Z0
Endemism Type:	Y
Canadian COSEWIC Name:	
Canadian COSEWIC ID:	

## Rank/Status

<b>Global Rank:</b>	G1Q (reviewed November 20, 2018)
<b>National Rank (Canada):</b>	N1 (reviewed 2022)
<b>Subnational Ranks (Canada):</b>	ON=SH, QC=S1
<b>National Rank (United States):</b>	None
<b>Subnational Ranks (United States):</b>	None
<b>National Rank (Mexico):</b>	None
<b>Subnational Ranks (Mexico):</b>	None
<b>Canadian SARA Status:</b>	None
<b>Canadian COSEWIC Status:</b>	None
<b>US ESA Status:</b>	None

## Range Map

<b>Date Generated:</b>	April 02, 2024
<b>Version:</b>	1.0
<b>Stage:</b>	Expert Reviewed
<b>Scope:</b>	Global
<b>Metadata:</b>	Primary Species - <i>Sabulina litorea</i> (Fernald) Rydberg Input Records - 3 ON Observations and Source Features, 4 QC Element Occurrences; Expert Reviews - Wasyl Bakowsky, Pierre Morisset, 2 Anonymous
<b>Comments:</b>	None <a href="#">Please see spatial data for Ecoshape-level reviewer comments.</a>
<b>Disclaimer:</b>	Please review our <a href="#">methods document</a> before using EBAR.  EBAR range data are relatively coarse scale and appropriate for screening and education purposes, but are not intended for all types of applications and analysis.  The absence of data in any geographic areas does not necessarily mean that a species is not present.  An ecoshape with a presence value does not necessarily mean that a species is present throughout the entire geographic area.
<b>Presence Definitions:</b>	(Please see Comments above for any exceptions)  Present - the species is found within the ecoshape based on species observation data, Element Occurrences, Source Features, Canadian Federal Critical Habitat, or expert opinion.  Presence Expected - expert opinion the species may be present, or the ecoshape overlapped with a range estimate or a habitat suitability model.  Historical - all species occurrence data within the ecoshape contains observation data greater than 40 years old or an Element Occurrence (EO) that was ranked as Extirpated or Historical (EO Rank of H, H?, X or X?).
<b>Usage Type Definitions:</b>	(Please see Comments above for any exceptions)  Breeding - the species is thought to breed within the ecoshape based on eBird Breeding and Behaviour Codes or expert opinion.  Possible Breeding - the species is probably or possibly breeding within the ecoshape based on eBird, BBA or jurisdiction Breeding and Behaviour Codes, or on expert opinion.
<b>Map Projection:</b>	North America Albers Equal Area Conic (WKID 4269)

## Credits

<b>Suggested Citation:</b>	NatureServe Canada, 2020. Ecosystem-based Automated Range (EBAR) for <i>Sabulina litorea</i> , Version 1.0, Expert Reviewed (Global Scope). Ottawa, Canada. Retrieved from [insert url] on [insert date]
<b>License:</b>	Ecosystem-based Automated Range (EBAR) Project, Copyright NatureServe Canada 2022 under CC BY 4.0 ( <a href="https://creativecommons.org/licenses/by/4.0/">creativecommons.org/licenses/by/4.0/</a> )
<b>Project Website:</b>	<a href="http://www.natureserve.org/canada/ebar">www.natureserve.org/canada/ebar</a>
<b>Contact:</b>	<a href="mailto:ebar-kba@natureserve.ca">ebar-kba@natureserve.ca</a>
<b>Input References:</b>	ON Observations and Source Features - Natural Heritage Information Centre, Ontario Ministry of Natural Resources and Forestry QC Element Occurrences - Centre de Données sur le Patrimoine Naturel du Québec
<b>Reviewers by Taxa:</b>	<a href="#">Reviewers by Taxa</a>