

# Tyto alba pop. 1

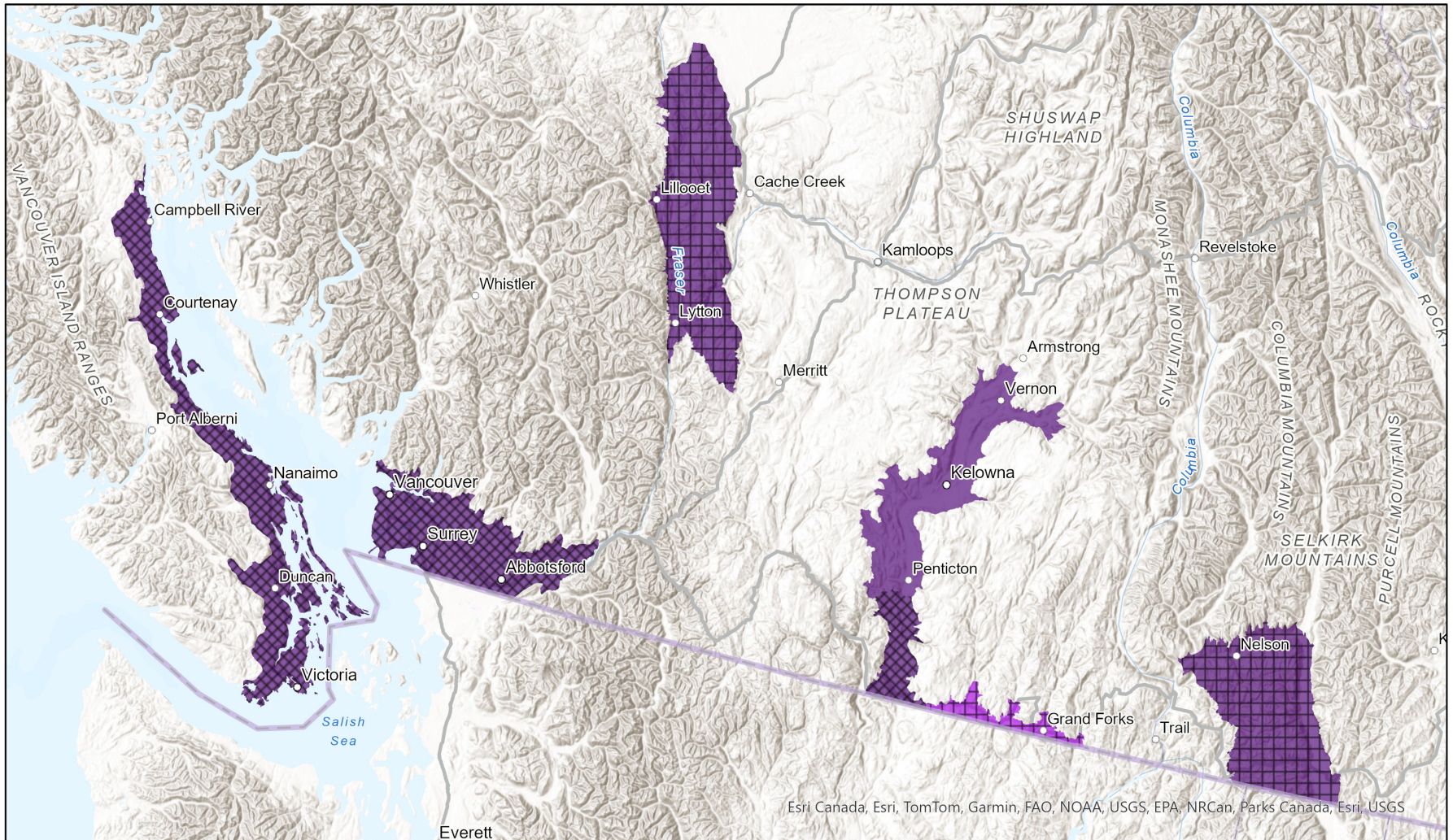


- Present
- Breeding
- Presence Expected
- Possible Breeding
- Historical

## Ecosystem-based Automated Range (EBAR)

Date Generated: March 20, 2024; Version: 1.0; Stage: Expert Reviewed; Scope: Global

Synonyms Used: None



Esri Canada, Esri, TomTom, Garmin, FAO, NOAA, USGS, EPA, NRCan, Parks Canada, Esri, USGS

0 50 100 km

Input Records - 59 BC Breeding Bird Atlas, 2 BC Non-sensitive Element Occurrences, 5 BC Survey Observations, 4534 eBird, 3 iNaturalist.ca, 88 iNaturalist.ca (original coordinates for obscured records); Expert Reviews - BC Experts, 1 Anonymous

Map centre: 121.0617°W 49.8973°N  
 © NatureServe Canada 2020 under CC BY 4.0

EBAR is relatively coarse scale data and not intended for all applications and analysis. Please see full disclaimer in metadata.

## Ecosystem-based Automated Range (EBAR) Metadata

---

### Species

National Scientific Name:	<i>Tyto alba pop. 1</i>
Scientific Name Reference:	Committee on the Status of Endangered Wildlife in Canada (COSEWIC). 2005a. COSEWIC Assessment Results, May 2005. Committee on the Status of Endangered Wildlife in Canada.
National English Name:	Barn Owl - Western population
National French Name:	Effraie des clochers - Population de l'Ouest
Element National ID:	777464
Element Global ID:	777443 ( <a href="#">go to NatureServe Explorer</a> )
Element Code:	ABNSA01013
Endemism Type:	N
Canadian COSEWIC Name:	
Canadian COSEWIC ID:	44

## Rank/Status

<b>Global Rank:</b>	G5TNRQ
<b>National Rank (Canada):</b>	N3 (reviewed 2022)
<b>Subnational Ranks (Canada):</b>	BC=SNR
<b>National Rank (United States):</b>	None
<b>Subnational Ranks (United States):</b>	None
<b>National Rank (Mexico):</b>	None
<b>Subnational Ranks (Mexico):</b>	None
<b>Canadian SARA Status:</b>	Threatened/Menacée (June 05, 2003)
<b>Canadian COSEWIC Status:</b>	Threatened (November 26, 2010)
<b>US ESA Status:</b>	None



## Range Map

<b>Date Generated:</b>	March 20, 2024
<b>Version:</b>	1.0
<b>Stage:</b>	Expert Reviewed
<b>Scope:</b>	Global
<b>Metadata:</b>	Primary Species - <i>Tyto alba pop. 1</i> ; Secondary Species - <i>Tyto alba</i> (Scopoli, 1769) Input Records - 59 BC Breeding Bird Atlas, 2 BC Non-sensitive Element Occurrences, 5 BC Survey Observations, 4534 eBird, 3 iNaturalist.ca, 88 iNaturalist.ca (original coordinates for obscured records); Expert Reviews - BC Experts, 1 Anonymous
<b>Comments:</b>	None <a href="#">Please see spatial data for Ecoshape-level reviewer comments.</a>
<b>Disclaimer:</b>	Please review our <a href="#">methods document</a> before using EBAR.  EBAR range data are relatively coarse scale and appropriate for screening and education purposes, but are not intended for all types of applications and analysis.  The absence of data in any geographic areas does not necessarily mean that a species is not present.  An ecoshape with a presence value does not necessarily mean that a species is present throughout the entire geographic area.
<b>Presence Definitions:</b>	(Please see Comments above for any exceptions)  Present - the species is found within the ecoshape based on species observation data, Element Occurrences, Source Features, Canadian Federal Critical Habitat, or expert opinion.  Presence Expected - expert opinion the species may be present, or the ecoshape overlapped with a range estimate or a habitat suitability model.  Historical - all species occurrence data within the ecoshape contains observation data greater than 40 years old or an Element Occurrence (EO) that was ranked as Extirpated or Historical (EO Rank of H, H?, X or X?).
<b>Usage Type Definitions:</b>	(Please see Comments above for any exceptions)  Breeding - the species is thought to breed within the ecoshape based on eBird Breeding and Behaviour Codes or expert opinion.  Possible Breeding - the species is probably or possibly breeding within the ecoshape based on eBird, BBA or jurisdiction Breeding and Behaviour Codes, or on expert opinion.
<b>Map Projection:</b>	North America Albers Equal Area Conic (WKID 4269)

## Credits

**Suggested Citation:**

NatureServe Canada, 2020. Ecosystem-based Automated Range (EBAR) for Tyto alba pop. 1, Version 1.0, Expert Reviewed (Global Scope). Ottawa, Canada. Retrieved from [insert url] on [insert date]

**License:**

Ecosystem-based Automated Range (EBAR) Project, Copyright NatureServe Canada 2022 under CC BY 4.0 ([creativecommons.org/licenses/by/4.0/](https://creativecommons.org/licenses/by/4.0/))

**Project Website:**

[www.natureserve.org/canada/ebar](http://www.natureserve.org/canada/ebar)

**Contact:**

[ebar-kba@natureserve.ca](mailto:ebar-kba@natureserve.ca)

**Input References:**

BC Breeding Bird Atlas - British Columbia Breeding Bird Atlas. 2008. Data accessed from NatureCounts, a node of the Avian Knowledge Network, Birds Canada. Available: <http://www.naturecounts.ca/>.

BC Non-sensitive Element Occurrences - British Columbia Conservation Data Centre

BC Survey Observations - British Columbia Conservation Data Centre

eBird - [eBird Basic Dataset. Version: EBD\\_relMar-2022. Cornell Lab of Ornithology, Ithaca, New York. Mar 2022. eBird: An online database of bird distribution and abundance \[web application\]. eBird, Cornell Lab of Ornithology, Ithaca, New York. Available: <http://www.ebird.org>](#)

iNaturalist.ca - [California Academy of Sciences and the National Geographic Society](#)

iNaturalist.ca (original coordinates for obscured records) - [California Academy of Sciences and the National Geographic Society](#)

**Reviewers by Taxa:**

[Reviewers by Taxa](#)