

# Thamnophis sauritus pop. 2

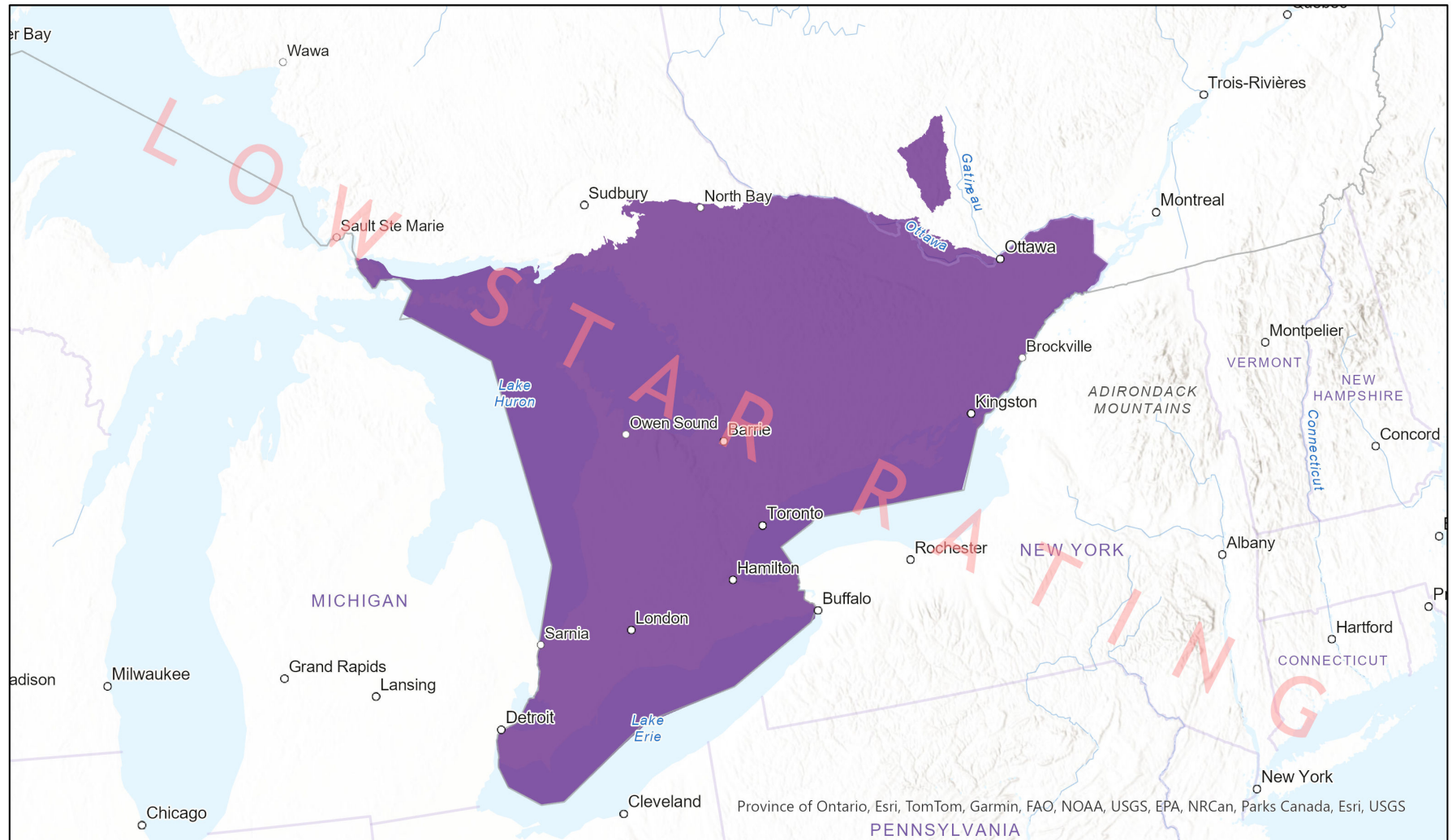


- Present
- Presence Expected
- Historical

## Ecosystem-based Automated Range (EBAR)

Date Generated: August 30, 2023; Version: 1.0; Stage: Expert Reviewed (Low Star Rating); Scope: Global

Synonyms Used: Thamnophis sauritus, Thamnophis saurita



0 120 240 km

Input Records - 163 BISON, 1685 GBIF, 321 iNaturalist.ca, 32 iNaturalist.ca (original coordinates for obscured records), 73 iNaturalist.org, 282 ON Element Occurrences, 3289 ON Observations and Source Features, 10 QC Element Occurrences, 42 VertNet; Expert Reviews - Mike Burrell, 1 Anonymous

Map centre: 79.5884°W 44.5212°N  
© NatureServe Canada 2020 under CC BY 4.0

EBAR is relatively coarse scale data and not intended for all applications and analysis. Please see full disclaimer in metadata.



## Ecosystem-based Automated Range (EBAR) Metadata

---

### Species

National Scientific Name:	<i>Thamnophis sauritus</i> pop. 2
Scientific Name Reference:	Committee on the Status of Endangered Wildlife in Canada (COSEWIC). 2012b. COSEWIC Assessment Results November 2012. Accessed online at <a href="http://www.cosewic.ca/index.php/en-ca/assessment-process">http://www.cosewic.ca/index.php/en-ca/assessment-process</a>
National English Name:	Eastern Ribbonsnake - Great Lakes population
National French Name:	Couleuvre mince - Population des Grands Lacs
Element National ID:	777491
Element Global ID:	777416 ( <a href="#">go to NatureServe Explorer</a> )
Element Code:	ARADB36127
Endemism Type:	N
Canadian COSEWIC Name:	
Canadian COSEWIC ID:	709



## Rank/Status

Global Rank:	G5TNRQ
National Rank (Canada):	N3 (reviewed 2012)
Subnational Ranks (Canada):	ON=SNR, QC=SNR
National Rank (United States):	None
Subnational Ranks (United States):	None
National Rank (Mexico):	None
Subnational Ranks (Mexico):	None
Canadian SARA Status:	Special Concern/Préoccupante (January 12, 2005)
Canadian COSEWIC Status:	Special Concern (November 25, 2012)
US ESA Status:	None



## Range Map

Date Generated:	August 30, 2023
Version:	1.0
Stage:	Expert Reviewed (Low Star Rating)
Scope:	Global
Metadata:	<p>Primary Species - <i>Thamnophis sauritus</i> pop. 2 ; Secondary Species - <i>Thamnophis saurita</i> (Linnaeus, 1766); Synonyms - <i>Thamnophis sauritus</i>, <i>Thamnophis saurita</i> (Linnaeus, 1766)</p> <p>Input Records - 163 BISON, 1685 GBIF, 321 iNaturalist.ca, 32 iNaturalist.ca (original coordinates for obscured records), 73 iNaturalist.org, 282 ON Element Occurrences, 3289 ON Observations and Source Features, 10 QC Element Occurrences, 42 VertNet; Expert Reviews - Mike Burrell, 1 Anonymous</p>
Comments:	This range has a low star rating.
Disclaimer:	<p>Please review our <a href="#">methods document</a> before using EBAR.</p> <p>EBAR range data are relatively coarse scale and appropriate for screening and education purposes, but are not intended for all types of applications and analysis.</p> <p>The absence of data in any geographic areas does not necessarily mean that a species is not present.</p> <p>An ecoshape with a presence value does not necessarily mean that a species is present throughout the entire geographic area.</p>
Presence Definitions:	<p>(Please see Comments above for any exceptions)</p> <p>Present - the species is found within the ecoshape based on species observation data, Element Occurrences, Source Features, Canadian Federal Critical Habitat, or expert opinion.</p> <p>Presence Expected - expert opinion the species may be present, or the ecoshape overlapped with a range estimate or a habitat suitability model.</p> <p>Historical - all species occurrence data within the ecoshape contains observation data greater than 40 years old or an Element Occurrence (EO) that was ranked as Extirpated or Historical (EO Rank of H, H?, X or X?).</p>
Usage Type Definitions:	<p>(Please see Comments above for any exceptions)</p> <p>Breeding - the species is thought to breed within the ecoshape based on eBird Breeding and Behaviour Codes or expert opinion.</p> <p>Possible Breeding - the species is probably or possibly breeding within the ecoshape based on eBird, BBA or jurisdiction Breeding and Behaviour Codes, or on expert opinion.</p>
Map Projection:	North America Albers Equal Area Conic (WKID 4269)



## Credits

Suggested Citation:	NatureServe Canada, 2020. Ecosystem-based Automated Range (EBAR) for <i>Thamnophis sauritus</i> pop. 2, Version 1.0, Expert Reviewed (Low Star Rating) (Global Scope). Ottawa, Canada. Retrieved from [insert url] on [insert date]
License:	Ecosystem-based Automated Range (EBAR) Project, Copyright NatureServe Canada 2022 under CC BY 4.0 ( <a href="https://creativecommons.org/licenses/by/4.0/">creativecommons.org/licenses/by/4.0/</a> )
Project Website:	<a href="http://www.natureserve.org/canada/ebars">www.natureserve.org/canada/ebars</a>
Contact:	<a href="mailto:ebars-kba@natureserve.ca">ebars-kba@natureserve.ca</a>
Input References:	<p>BISON - <a href="#">United States Geological Survey</a></p> <p>GBIF - <a href="#">Global Biodiversity Information Facility</a></p> <p>iNaturalist.ca - <a href="#">California Academy of Sciences and the National Geographic Society</a></p> <p>iNaturalist.ca (original coordinates for obscured records) - <a href="#">California Academy of Sciences and the National Geographic Society</a></p> <p>iNaturalist.org - <a href="#">California Academy of Sciences and the National Geographic Society</a></p> <p>ON Element Occurrences - Natural Heritage Information Centre, Ontario Ministry of Natural Resources and Forestry</p> <p>ON Observations and Source Features - Natural Heritage Information Centre, Ontario Ministry of Natural Resources and Forestry</p> <p>QC Element Occurrences - Centre de Données sur le Patrimoine Naturel du Québec</p> <p>VertNet - <a href="#">National Science Foundation</a></p>
Reviewers by Taxa:	<a href="#">Reviewers by Taxa</a>