

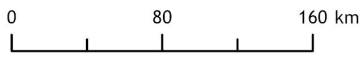
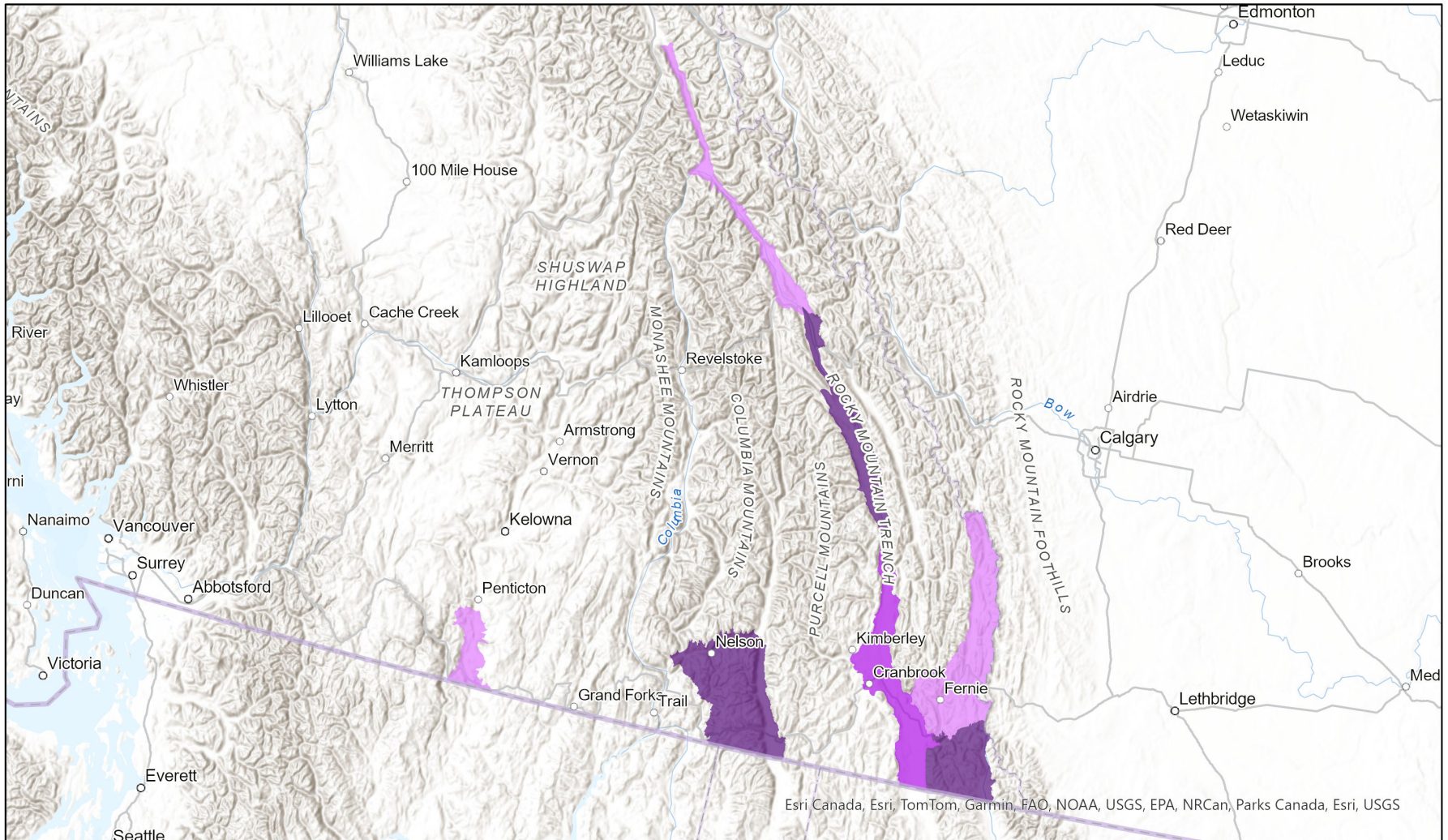
Lithobates pipiens pop. 1



Ecosystem-based Automated Range (EBAR)

Date Generated: October 18, 2023; Version: 1.0; Stage: Expert Reviewed; Scope: Global

Synonyms Used: None



Input Records - 2 BC Non-sensitive Element Occurrences, 8262 BC Survey Observations, 126 BC Telemetry Observations, 17 BISON, 4 ECCC Critical Habitat, 47 GBIF, 1 iDigBio, 7 iNaturalist.ca, 2 iNaturalist.ca (original coordinates for obscured records), 12 iNaturalist.org, 3 MT Ranges, 20 VertNet; Expert Reviews - Ian Adams, Lea Randall, BC Experts, 1 Anonymous

Map centre: 117.6813°W 50.7639°N
© NatureServe Canada 2020 under CC BY 4.0

EBAR is relatively coarse scale data and not intended for all applications and analysis. Please see full disclaimer in metadata.

Ecosystem-based Automated Range (EBAR) Metadata

Species

National Scientific Name:	<i>Lithobates pipiens pop. 1</i>
Scientific Name Reference:	Committee on the Status of Endangered Wildlife in Canada (COSEWIC). 2021. COSEWIC Assessment Results, May 2021. Online. Available: http://www.cosewic.ca/index.php/en-ca/assessment-process .
National English Name:	Northern Leopard Frog - Rocky Mountain population
National French Name:	Grenouille léopard du Nord - Population des Rocheuses
Element National ID:	777480
Element Global ID:	777404 (go to NatureServe Explorer)
Element Code:	AAABH01171
Endemism Type:	N
Canadian COSEWIC Name:	
Canadian COSEWIC ID:	551

Rank/Status

Global Rank:	G5TNRQ
National Rank (Canada):	N1 (reviewed 2022)
Subnational Ranks (Canada):	BC=SNR
National Rank (United States):	None
Subnational Ranks (United States):	None
National Rank (Mexico):	None
Subnational Ranks (Mexico):	None
Canadian SARA Status:	Endangered/En voie de disparition (June 05, 2003)
Canadian COSEWIC Status:	Endangered (December 01, 2021)
US ESA Status:	None

Range Map

Date Generated:	October 18, 2023
Version:	1.0
Stage:	Expert Reviewed
Scope:	Global
Metadata:	Primary Species - <i>Lithobates pipiens</i> pop. 1 ; Secondary Species - <i>Lithobates pipiens</i> (Schreber, 1782) Input Records - 2 BC Non-sensitive Element Occurrences, 8262 BC Survey Observations, 126 BC Telemetry Observations, 17 BISON, 4 ECCC Critical Habitat, 47 GBIF, 1 iDigBio, 7 iNaturalist.ca, 2 iNaturalist.ca (original coordinates for obscured records), 12 iNaturalist.org, 3 MT Ranges, 20 VertNet; Expert Reviews - Ian Adams, Lea Randall, BC Experts, 1 Anonymous
Comments:	Range spatially constrained to British Columbia to capture the COSEWIC population extent. Please see spatial data for Ecoshape-level reviewer comments.
Disclaimer:	Please review our methods document before using EBAR. EBAR range data are relatively coarse scale and appropriate for screening and education purposes, but are not intended for all types of applications and analysis. The absence of data in any geographic areas does not necessarily mean that a species is not present. An ecoshape with a presence value does not necessarily mean that a species is present throughout the entire geographic area.
Presence Definitions:	(Please see Comments above for any exceptions) Present - the species is found within the ecoshape based on species observation data, Element Occurrences, Source Features, Canadian Federal Critical Habitat, or expert opinion. Presence Expected - expert opinion the species may be present, or the ecoshape overlapped with a range estimate or a habitat suitability model. Historical - all species occurrence data within the ecoshape contains observation data greater than 40 years old or an Element Occurrence (EO) that was ranked as Extirpated or Historical (EO Rank of H, H?, X or X?).
Usage Type Definitions:	(Please see Comments above for any exceptions) Breeding - the species is thought to breed within the ecoshape based on eBird Breeding and Behaviour Codes or expert opinion. Possible Breeding - the species is probably or possibly breeding within the ecoshape based on eBird, BBA or jurisdiction Breeding and Behaviour Codes, or on expert opinion.
Map Projection:	North America Albers Equal Area Conic (WKID 4269)

Credits

Suggested Citation:	NatureServe Canada, 2020. Ecosystem-based Automated Range (EBAR) for <i>Lithobates pipiens</i> pop. 1, Version 1.0, Expert Reviewed (Global Scope). Ottawa, Canada. Retrieved from [insert url] on [insert date]
License:	Ecosystem-based Automated Range (EBAR) Project, Copyright NatureServe Canada 2022 under CC BY 4.0 (creativecommons.org/licenses/by/4.0/)
Project Website:	www.natureserve.org/canada/ebar
Contact:	ebar-kba@natureserve.ca
Input References:	BC Non-sensitive Element Occurrences - British Columbia Conservation Data Centre BC Survey Observations - British Columbia Conservation Data Centre BC Telemetry Observations - British Columbia Conservation Data Centre BISON - United States Geological Survey ECCC Critical Habitat - Environment and Climate Change Canada GBIF - Global Biodiversity Information Facility iDigBio - Integrated Digital Biocollection iNaturalist.ca - California Academy of Sciences and the National Geographic Society iNaturalist.ca (original coordinates for obscured records) - California Academy of Sciences and the National Geographic Society iNaturalist.org - California Academy of Sciences and the National Geographic Society MT Ranges - Montana Natural Heritage Program VertNet - National Science Foundation
Reviewers by Taxa:	Reviewers by Taxa