

Isoetes minima

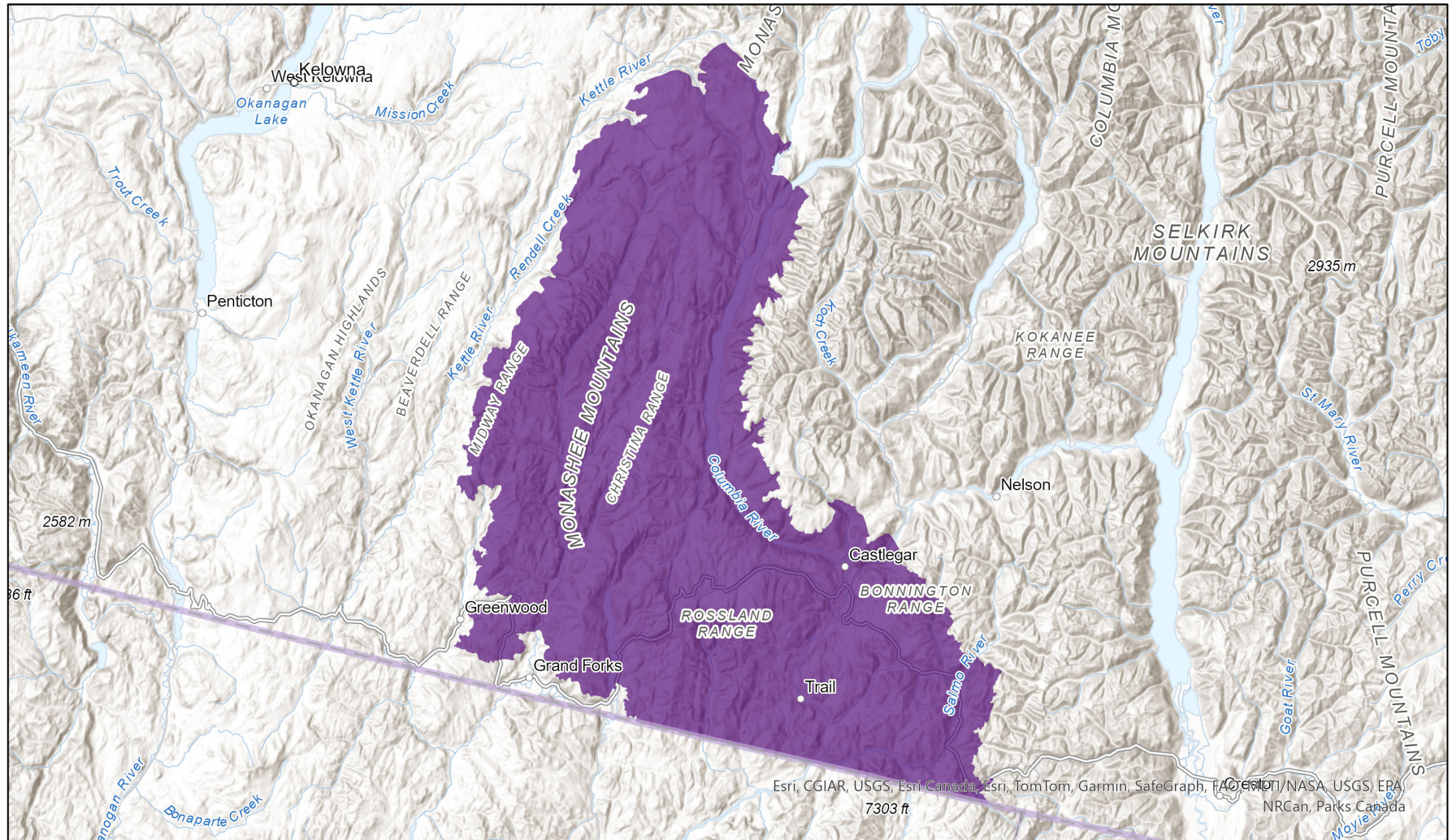


- Present
- Presence Expected
- Historical

Ecosystem-based Automated Range (EBAR)

Date Generated: November 29, 2022; Version: 1.0; Stage: Expert Reviewed (National); Scope: Canadian

Synonyms Used: None



Input Records - 4 BC Non-sensitive Element Occurrences, 12 GBIF, 3 iDigBio, 4 iNaturalist.ca; Expert Reviews - Ryan Batten

Map centre: 118.0778° W 49.5101° N
 © NatureServe Canada 2020 under CC BY 4.0

EBAR is relatively coarse scale data and not intended for all applications and analysis. Please see full disclaimer in metadata.

Ecosystem-based Automated Range (EBAR) Metadata

Species

National Scientific Name:	<i>Isoetes minima</i> A.A. Eat.
Scientific Name Reference:	Taylor, W.C., N.T. Luebke, and A.R. Lekschas. 2003. Taxonomic status and evolutionary relationship of <i>Isoetes minima</i> A.A. Eaton (Isoetaceae) based on nuclear ribosomal DNA internal transcribed spacer sequences. Botanical Electronic News 304. Accessed online (January 2015): http://bomi.ou.edu/ben/ben304.html .
National English Name:	Columbia Quillwort
National French Name:	Isoète du Columbia
Element National ID:	790045
Element Global ID:	768498 (go to NatureServe Explorer)
Element Code:	PPISO01081
Endemism Type:	N
Canadian COSEWIC Name:	
Canadian COSEWIC ID:	1469

Rank/Status

Global Rank:	G1G2 (reviewed January 28, 2015)
National Rank (Canada):	N1N2 (reviewed 2024)
Subnational Ranks (Canada):	BC=S1S2
National Rank (United States):	N1? (reviewed 2015)
Subnational Ranks (United States):	CA=SNR, ID=S1, OR=S1?, WA=S1
National Rank (Mexico):	None
Subnational Ranks (Mexico):	None
Canadian SARA Status:	Endangered/En voie de disparition (February 03, 2023)
Canadian COSEWIC Status:	Endangered (May 01, 2019)
US ESA Status:	None

Range Map

Date Generated:	November 29, 2022
Version:	1.0
Stage:	Expert Reviewed (National)
Scope:	Canadian
Metadata:	Primary Species - <i>Isoetes minima</i> A.A. Eat. Input Records - 4 BC Non-sensitive Element Occurrences, 12 GBIF, 3 iDigBio, 4 iNaturalist.ca; Expert Reviews - Ryan Batten
Comments:	None Please see spatial data for Ecoshape-level reviewer comments.
Disclaimer:	Please review our methods document before using EBAR. EBAR range data are relatively coarse scale and appropriate for screening and education purposes, but are not intended for all types of applications and analysis. The absence of data in any geographic areas does not necessarily mean that a species is not present. An ecoshape with a presence value does not necessarily mean that a species is present throughout the entire geographic area.
Presence Definitions:	(Please see Comments above for any exceptions) Present - the species is found within the ecoshape based on species observation data, Element Occurrences, Source Features, Canadian Federal Critical Habitat, or expert opinion. Presence Expected - expert opinion the species may be present, or the ecoshape overlapped with a range estimate or a habitat suitability model. Historical - all species occurrence data within the ecoshape contains observation data greater than 40 years old or an Element Occurrence (EO) that was ranked as Extirpated or Historical (EO Rank of H, H?, X or X?).
Usage Type Definitions:	(Please see Comments above for any exceptions) Breeding - the species is thought to breed within the ecoshape based on eBird Breeding and Behaviour Codes or expert opinion. Possible Breeding - the species is probably or possibly breeding within the ecoshape based on eBird, BBA or jurisdiction Breeding and Behaviour Codes, or on expert opinion.
Map Projection:	North America Albers Equal Area Conic (WKID 4269)

Credits

Suggested Citation:	NatureServe Canada, 2020. Ecosystem-based Automated Range (EBAR) for <i>Isoetes minima</i> , Version 1.0, Expert Reviewed (National) (Canadian Scope). Ottawa, Canada. Retrieved from [insert url] on [insert date]
License:	Ecosystem-based Automated Range (EBAR) Project, Copyright NatureServe Canada 2022 under CC BY 4.0 (creativecommons.org/licenses/by/4.0/)
Project Website:	www.natureserve.org/canada/ebar
Contact:	ebar-kba@natureserve.ca
Input References:	BC Non-sensitive Element Occurrences - British Columbia Conservation Data Centre GBIF - Global Biodiversity Information Facility iDigBio - Integrated Digital Biocollection iNaturalist.ca - California Academy of Sciences and the National Geographic Society
Reviewers by Taxa:	Reviewers by Taxa