

# Satyrium semiluna

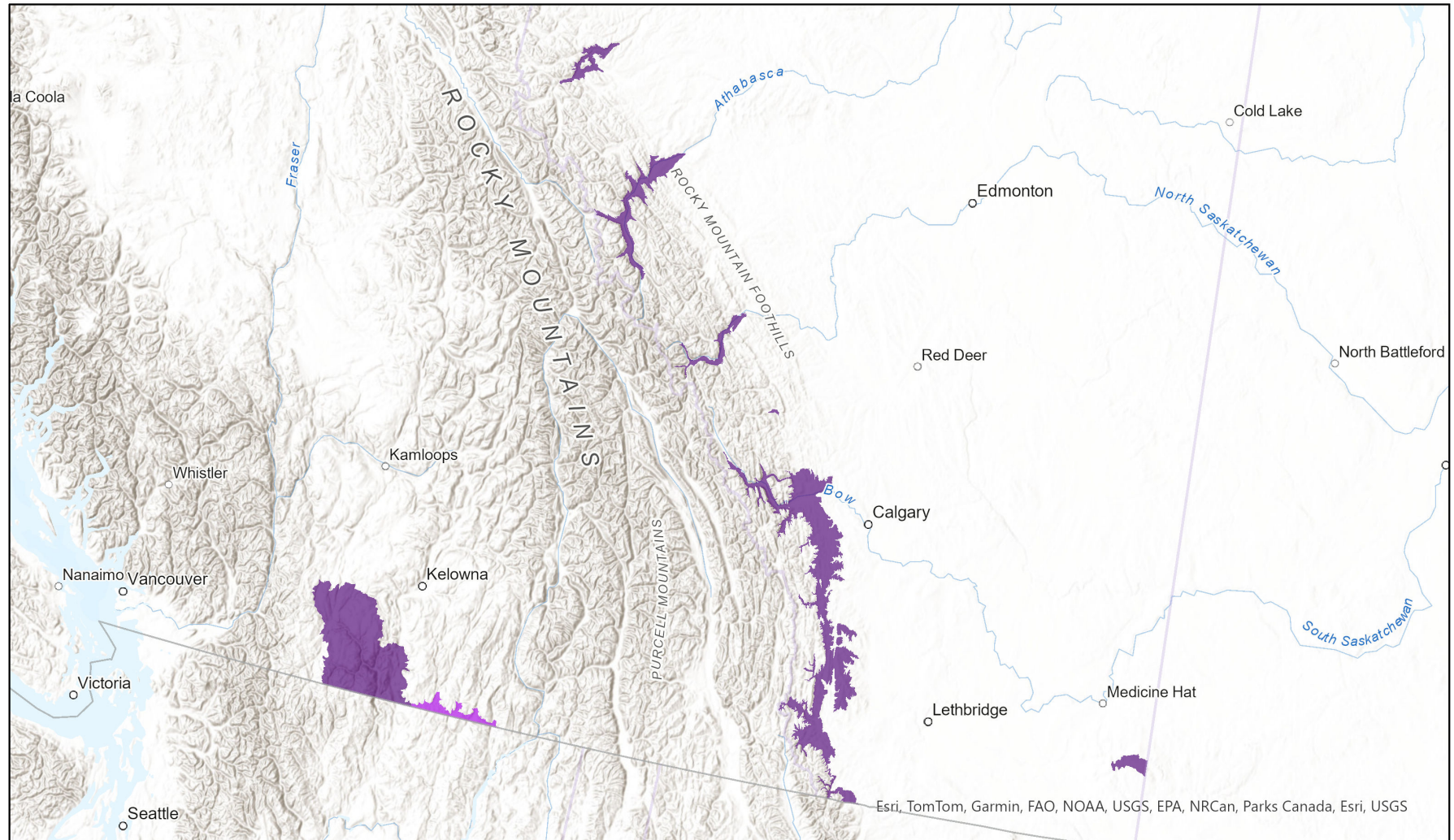
- Present
- Presence Expected
- Historical



## Ecosystem-based Automated Range (EBAR)

Date Generated: September 25, 2024; Version: 1.0; Stage: Expert Reviewed (National); Scope: Canadian

Synonyms Used: None



0 110 220 km

Input Records - 9 AB Element Occurrences, 1 AB Source Feature Polygons, 6 BC Non-sensitive Element Occurrences, 420 BC Survey Observations, 26 ECCC Critical Habitat, 30 GBIF, 50 iNaturalist.ca, 2 iNaturalist.ca (original coordinates for obscured records), 21 iNaturalist.org, 5 Range maps from COSEWIC reports - Digitized by Hargreaves lab & WCSC; Expert Reviews - BC Experts, Doug Macaulay, Jayme Lewthwaite, Doug Macaulay

Map centre: 116.1015° W 51.5769° N  
© NatureServe Canada 2020 under CC BY 4.0  
EBAR is relatively coarse scale data and not intended for all applications and analysis. Please see full disclaimer in metadata.

## Ecosystem-based Automated Range (EBAR) Metadata

---

### Species

National Scientific Name:	<i>Satyrium semiluna</i> Klots, 1930
Scientific Name Reference:	Pelham, J.P. 2023. A catalogue of the butterflies of the United States and Canada. Revised 15 February 2023. <a href="http://butterfliesofamerica.com/US-Can-Cat.htm">http://butterfliesofamerica.com/US-Can-Cat.htm</a>
National English Name:	Half-moon Hairstreak
National French Name:	Porte-queue cendré; Porte-queue demi-lune
Element National ID:	737035
Element Global ID:	737034 ( <a href="#">go to NatureServe Explorer</a> )
Element Code:	IILEPD4024
Endemism Type:	N
Canadian COSEWIC Name:	
Canadian COSEWIC ID:	937

## Rank/Status

Global Rank:	G4 (reviewed January 05, 2021)
National Rank (Canada):	N1 (reviewed 2022)
Subnational Ranks (Canada):	AB=S1, BC=S1
National Rank (United States):	N4 (reviewed 2007)
Subnational Ranks (United States):	CA=SNR, CO=S3, ID=S3, MT=S4, NV=SNR, OR=SNR, UT=SNR, WA=S4, WY=SNR
National Rank (Mexico):	None
Subnational Ranks (Mexico):	None
Canadian SARA Status:	Endangered/En voie de disparition (December 13, 2007)
Canadian COSEWIC Status:	None
US ESA Status:	None

## Range Map

Date Generated:	September 25, 2024
Version:	1.0
Stage:	Expert Reviewed (National)
Scope:	Canadian
Metadata:	<p>Primary Species - <i>Satyrium semiluna</i> Klots, 1930</p> <p>Input Records - 9 AB Element Occurrences, 1 AB Source Feature Polygons, 6 BC Non-sensitive Element Occurrences, 420 BC Survey Observations, 26 ECCC Critical Habitat, 30 GBIF, 50 iNaturalist.ca, 2 iNaturalist.ca (original coordinates for obscured records), 21 iNaturalist.org, 5 Range maps from COSEWIC reports - Digitized by Hargreaves lab &amp; WCSC; Expert Reviews - BC Experts, Doug Macaulay, Jayme Lewthwaite, Doug Macaulay</p>
Comments:	<p>Species range is overestimated in Alberta. In Alberta, species is only known from Blakiston Fan, Waterton Lakes National Park (WLNP).</p> <p><a href="#">Please see spatial data for Ecoshape-level reviewer comments.</a></p>
Disclaimer:	<p>Please review our <a href="#">methods document</a> before using EBAR.</p> <p>EBAR range data are relatively coarse scale and appropriate for screening and education purposes, but are not intended for all types of applications and analysis.</p> <p>The absence of data in any geographic areas does not necessarily mean that a species is not present.</p> <p>An ecoshape with a presence value does not necessarily mean that a species is present throughout the entire geographic area.</p>

**Presence Definitions:**

(Please see Comments above for any exceptions)

Present - the species is found within the ecoshape based on species observation data, Element Occurrences, Source Features, Canadian Federal Critical Habitat, or expert opinion.

Presence Expected - expert opinion the species may be present, or the ecoshape overlapped with a range estimate or a habitat suitability model.

Historical - all species occurrence data within the ecoshape contains observation data greater than 40 years old or an Element Occurrence (EO) that was ranked as Extirpated or Historical (EO Rank of H, H?, X or X?), or expert opinion that the species is extirpated or historical.

**Usage Type Definitions:**

(Please see Comments above for any exceptions)

Breeding - the species is thought to breed within the ecoshape based on eBird Breeding and Behaviour Codes or expert opinion.

Possible Breeding - the species is probably or possibly breeding within the ecoshape based on eBird, BBA or jurisdiction Breeding and Behaviour Codes, or on expert opinion.

**Map Projection:**

North America Albers Equal Area Conic (WKID 4269)

## Credits

### Suggested Citation:

NatureServe Canada, 2020. Ecosystem-based Automated Range (EBAR) for *Satyrrium semiluna*, Version 1.0, Expert Reviewed (National) (Canadian Scope). Ottawa, Canada. Retrieved from [insert url] on [insert date]

### License:

Ecosystem-based Automated Range (EBAR) Project, Copyright NatureServe Canada 2024 under CC BY 4.0 ([creativecommons.org/licenses/by/4.0/](https://creativecommons.org/licenses/by/4.0/))

### Project Website:

[www.natureserve.org/canada/ebar](http://www.natureserve.org/canada/ebar)

### Contact:

[ebbar-kba@natureserve.ca](mailto:ebbar-kba@natureserve.ca)

### Input References:

AB Element Occurrences - Alberta Conservation Information Management System, Alberta Environment and Parks, Edmonton

AB Source Feature Polygons - Alberta Conservation Information Management System, Alberta Environment and Parks, Edmonton

BC Non-sensitive Element Occurrences - British Columbia Conservation Data Centre

BC Survey Observations - British Columbia Conservation Data Centre

ECCC Critical Habitat - [Environment and Climate Change Canada](#)

GBIF - [Global Biodiversity Information Facility](#)

iNaturalist.ca - [California Academy of Sciences and the National Geographic Society](#)

iNaturalist.ca (original coordinates for obscured records) - [California Academy of Sciences and the National Geographic Society](#)

iNaturalist.org - [California Academy of Sciences and the National Geographic Society](#)

Range maps from COSEWIC reports - Digitized by Hargreaves lab & WCSC - Range maps from COSEWIC reports - Digitized by Hargreaves lab & WCSC

### Reviewers by Taxa:

[Reviewers by Taxa](#)