

Fraxinus nigra

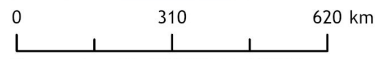
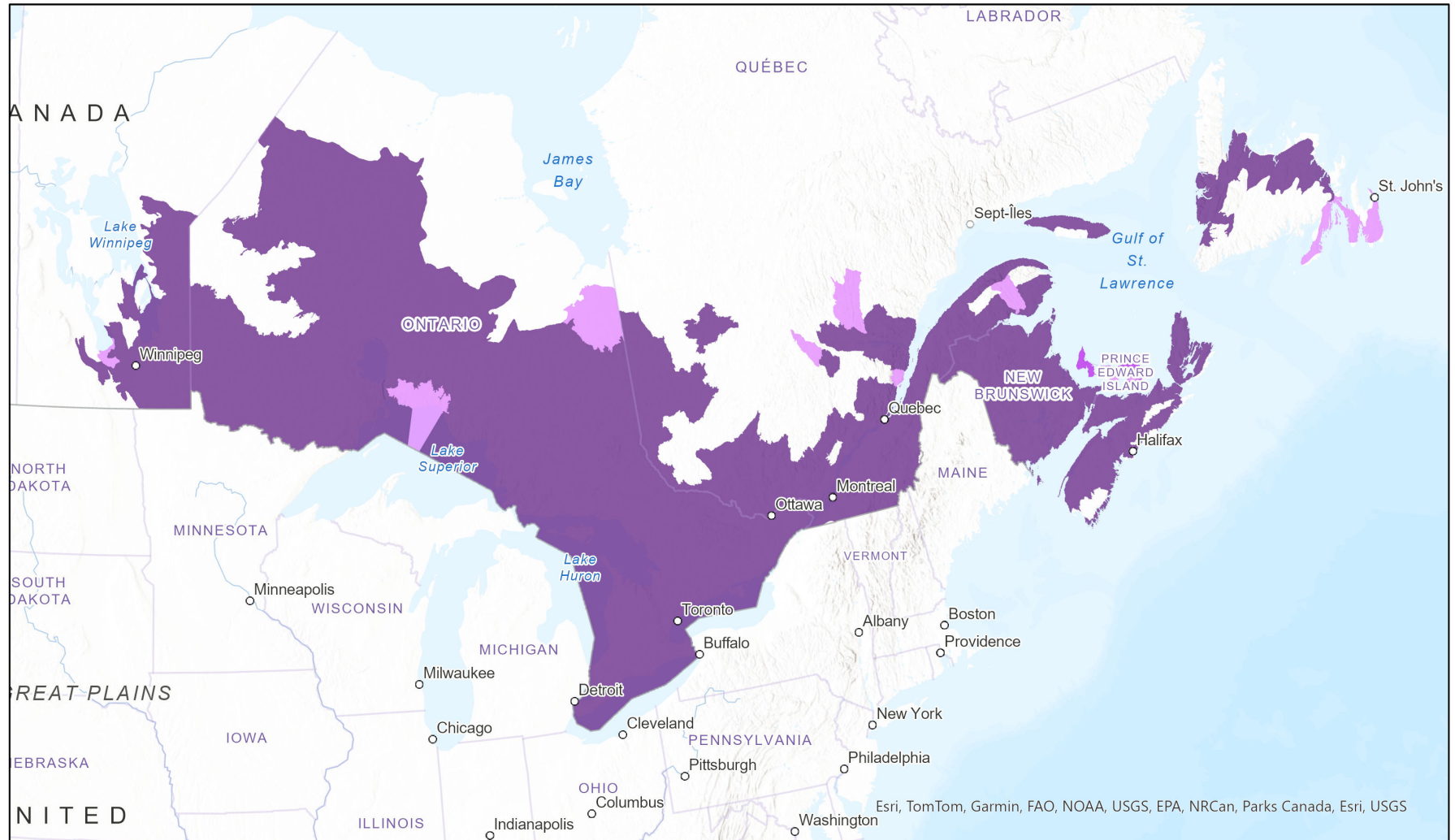


- Present
- Presence Expected
- Historical

Ecosystem-based Automated Range (EBAR)

Date Generated: March 4, 2024; Version: 1.0; Stage: Expert Reviewed (National); Scope: Canadian

Synonyms Used: None



Map centre: 76.4393° W 47.4798° N
 © NatureServe Canada 2020 under CC BY 4.0

Input Records - 3636 ACCDC Observations, 25 Bakowsky Observations, 3186 GBIF, 19 iDigBio, 3245 iNaturalist.ca, 467 iNaturalist.ca (original coordinates for obscured records), 939 iNaturalist.org, 42 Manitoba Museum, 22 MB Element Occurrences, 46 MB Source Feature Points, 5 MB Source Feature Polygons, 1740 ON Observations and Source Features, 31 WIN Vascular Plant Herbarium; Expert Reviews - Wasyl Bakowsky, Kate MacQuarrie, David Mazerolle, Kevin Doyle, Richard Ring, Scott Namestnik, Allan Harris, Bob Popp, Heather Sullivan, Antoine Plouffe-Leboeuf, Frédéric Coursol, 5 Anonymous

EBAR is relatively coarse scale data and not intended for all applications and analysis. Please see full disclaimer in metadata.

Ecosystem-based Automated Range (EBAR) Metadata

Species

National Scientific Name:	<i>Fraxinus nigra</i> Marsh.
Scientific Name Reference:	Kartesz, J.T. 1994. A synonymized checklist of the vascular flora of the United States, Canada, and Greenland. 2nd edition. 2 vols. Timber Press, Portland, OR.
National English Name:	Black Ash
National French Name:	Frêne noir
Element National ID:	237044
Element Global ID:	160163 (go to NatureServe Explorer)
Element Code:	PDOLE040B0
Endemism Type:	N
Canadian COSEWIC Name:	
Canadian COSEWIC ID:	1445

Rank/Status

Global Rank:	G5 (reviewed June 30, 2016)
National Rank (Canada):	N4 (reviewed 2023)
Subnational Ranks (Canada):	MB=S2, NB=S3S4, NF=S2S3, NS=S1S2, ON=S4, PE=S2, QC=S3S4
National Rank (United States):	N5?
Subnational Ranks (United States):	CT=SNR, DC=SH, DE=S2, IA=S4, IL=S1, IN=S2S3, MA=SNR, MD=S3, ME=SNR, MI=SNR, MN=SNR, ND=S2, NH=SNR, NJ=S3, NY=S5, OH=SNR, PA=S5, RI=S2, VA=S3, VT=SNR, WI=SNR, WV=S1
National Rank (Mexico):	None
Subnational Ranks (Mexico):	None
Canadian SARA Status:	None
Canadian COSEWIC Status:	Threatened (November 01, 2018)
US ESA Status:	None

Range Map

Date Generated:	March 04, 2024
Version:	1.0
Stage:	Expert Reviewed (National)
Scope:	Canadian
Metadata:	Primary Species - <i>Fraxinus nigra</i> Marsh. Input Records - 3636 ACCDC Observations, 25 Bakowsky Observations, 3186 GBIF, 19 iDigBio, 3245 iNaturalist.ca, 467 iNaturalist.ca (original coordinates for obscured records), 939 iNaturalist.org, 42 Manitoba Museum, 22 MB Element Occurrences, 46 MB Source Feature Points, 5 MB Source Feature Polygons, 1740 ON Observations and Source Features, 31 WIN Vascular Plant Herbarium; Expert Reviews - Wasyl Bakowsky, Kate MacQuarrie, David Mazerolle, Kevin Doyle, Richard Ring, Scott Namestnik, Allan Harris, Bob Popp, Heather Sullivan, Antoine Plouffe-Leboeuf, Frédéric Coursol, 5 Anonymous
Comments:	None Please see spatial data for Ecoshape-level reviewer comments.
Disclaimer:	Please review our methods document before using EBAR. EBAR range data are relatively coarse scale and appropriate for screening and education purposes, but are not intended for all types of applications and analysis. The absence of data in any geographic areas does not necessarily mean that a species is not present.

An ecoshape with a presence value does not necessarily mean that a species is present throughout the entire geographic area.

Presence Definitions:

(Please see Comments above for any exceptions)

Present - the species is found within the ecoshape based on species observation data, Element Occurrences, Source Features, Canadian Federal Critical Habitat, or expert opinion.

Presence Expected - expert opinion the species may be present, or the ecoshape overlapped with a range estimate or a habitat suitability model.

Historical - all species occurrence data within the ecoshape contains observation data greater than 40 years old or an Element Occurrence (EO) that was ranked as Extirpated or Historical (EO Rank of H, H?, X or X?).

Usage Type Definitions:

(Please see Comments above for any exceptions)

Breeding - the species is thought to breed within the ecoshape based on eBird Breeding and Behaviour Codes or expert opinion.

Possible Breeding - the species is probably or possibly breeding within the ecoshape based on eBird, BBA or jurisdiction Breeding and Behaviour Codes, or on expert opinion.

Map Projection:

North America Albers Equal Area Conic (WKID 4269)

Credits

- Suggested Citation:** NatureServe Canada, 2020. Ecosystem-based Automated Range (EBAR) for *Fraxinus nigra*, Version 1.0, Expert Reviewed (National) (Canadian Scope). Ottawa, Canada. Retrieved from [insert url] on [insert date]
- License:** Ecosystem-based Automated Range (EBAR) Project, Copyright NatureServe Canada 2022 under CC BY 4.0 (creativecommons.org/licenses/by/4.0/)
- Project Website:** www.natureserve.org/canada/ebar
- Contact:** ebar-kba@natureserve.ca
- Input References:** ACCDC Observations - Atlantic Canada Conservation Data Centre
Bakowsky Observations - Wasyl Bakowsy pers. comm. 2021
GBIF - [Global Biodiversity Information Facility](#)
iDigBio - [Integrated Digital Biocollection](#)
iNaturalist.ca - [California Academy of Sciences and the National Geographic Society](#)
iNaturalist.ca (original coordinates for obscured records) - [California Academy of Sciences and the National Geographic Society](#)
iNaturalist.org - [California Academy of Sciences and the National Geographic Society](#)
Manitoba Museum - Manitoba Museum, Natural History, Botany Collection. Winnipeg, Manitoba.
MB Element Occurrences - Manitoba Conservation Data Centre
MB Source Feature Points - Manitoba Conservation Data Centre
MB Source Feature Polygons - Manitoba Conservation Data Centre
ON Observations and Source Features - Natural Heritage Information Centre, Ontario Ministry of Natural Resources and Forestry
WIN Vascular Plant Herbarium - Diana Sawatsky, Assistant Curator, WIN Herbarium, Department of Biological Sciences, University of Manitoba
- Reviewers by Taxa:** [Reviewers by Taxa](#)