

Ptelea trifoliata

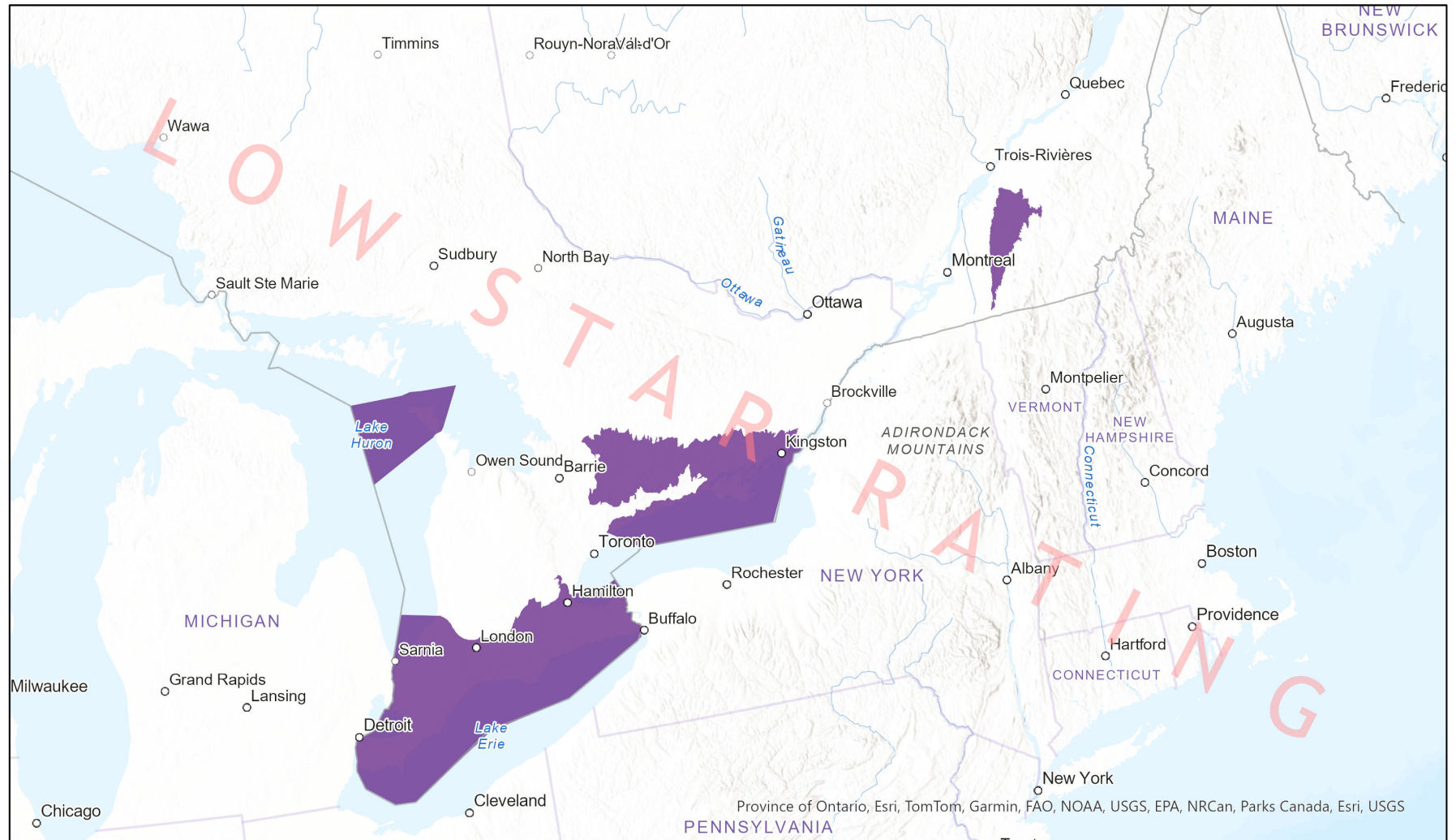


- Present
- Presence Expected
- Historical

Ecosystem-based Automated Range (EBAR)

Date Generated: October 13, 2023; Version: 1.0; Stage: Expert Reviewed (Low Star Rating); Scope: Canadian

Synonyms Used: None



0 130 260 km Input Records - 1 8Trees, 54 BISON, 432 GBIF, 414 iNaturalist.ca, 24 iNaturalist.ca (original coordinates for obscured records), 102 iNaturalist.org, 29 ON Element Occurrences, 1619 ON Observations and Source Features; Expert Reviews - Tyler Smith, 1 Anonymous

Map centre: 77.1511°W 44.5894°N
© NatureServe Canada 2020 under CC BY 4.0
EBAR is relatively coarse scale data and not intended for all applications and analysis. Please see full disclaimer in metadata.

Ecosystem-based Automated Range (EBAR) Metadata

Species

National Scientific Name:	<i>Ptelea trifoliata</i> L.
Scientific Name Reference:	Kartesz, J.T. 1994. A synonymized checklist of the vascular flora of the United States, Canada, and Greenland. 2nd edition. 2 vols. Timber Press, Portland, OR.
National English Name:	Common Hoptree
National French Name:	Ptéléa trifolié
Element National ID:	239047
Element Global ID:	159313 (go to NatureServe Explorer)
Element Code:	PDRUT0F020
Endemism Type:	N
Canadian COSEWIC Name:	
Canadian COSEWIC ID:	255

Rank/Status

Global Rank:	G5 (reviewed April 10, 1985)
National Rank (Canada):	N3 (reviewed 2023)
Subnational Ranks (Canada):	ON=S3, QC=SNA
National Rank (United States):	N5
Subnational Ranks (United States):	AL=SNR, AR=SNR, AZ=SNR, CO=S4, CT=SNR, DC=SNR, DE=SNA, FL=SNR, GA=S5, IA=S4, IL=SNR, IN=S5, KS=SNR, KY=S5, LA=SNR, MA=SNR, MD=S3, ME=SNR, MI=SNR, MN=SNA, MO=SNR, MS=S3S4, NC=S3, NE=SNR, NH=SNR, NJ=SNR, NM=SNR, NY=S2, OH=SNR, OK=SNR, PA=S2, RI=SNA, SC=SNR, TN=SNR, TX=SNR, UT=SH, VA=S4, VT=SNR, WI=SNR, WV=S4
National Rank (Mexico):	None
Subnational Ranks (Mexico):	None
Canadian SARA Status:	Special Concern/Préoccupante (January 12, 2005)
Canadian COSEWIC Status:	Special Concern (November 26, 2015)
US ESA Status:	None

Range Map

Date Generated:	October 13, 2023
Version:	1.0
Stage:	Expert Reviewed (Low Star Rating)
Scope:	Canadian
Metadata:	<p>Primary Species - <i>Ptelea trifoliata</i> L.; Secondary Species - <i>Ptelea trifoliata</i> ssp. <i>trifoliata</i> , <i>Ptelea trifoliata</i> var. <i>trifoliata</i></p> <p>Input Records - 1 8Trees, 54 BISON, 432 GBIF, 414 iNaturalist.ca, 24 iNaturalist.ca (original coordinates for obscured records), 102 iNaturalist.org, 29 ON Element Occurrences, 1619 ON Observations and Source Features; Expert Reviews - Tyler Smith, 1 Anonymous</p>
Comments:	None
Disclaimer:	<p>Please review our methods document before using EBAR.</p> <p>EBAR range data are relatively coarse scale and appropriate for screening and education purposes, but are not intended for all types of applications and analysis.</p> <p>The absence of data in any geographic areas does not necessarily mean that a species is not present.</p> <p>An ecoshape with a presence value does not necessarily mean that a species is present throughout the entire geographic area.</p>
Presence Definitions:	<p>(Please see Comments above for any exceptions)</p> <p>Present - the species is found within the ecoshape based on species observation data, Element Occurrences, Source Features, Canadian Federal Critical Habitat, or expert opinion.</p> <p>Presence Expected - expert opinion the species may be present, or the ecoshape overlapped with a range estimate or a habitat suitability model.</p> <p>Historical - all species occurrence data within the ecoshape contains observation data greater than 40 years old or an Element Occurrence (EO) that was ranked as Extirpated or Historical (EO Rank of H, H?, X or X?).</p>
Usage Type Definitions:	<p>(Please see Comments above for any exceptions)</p> <p>Breeding - the species is thought to breed within the ecoshape based on eBird Breeding and Behaviour Codes or expert opinion.</p> <p>Possible Breeding - the species is probably or possibly breeding within the ecoshape based on eBird, BBA or jurisdiction Breeding and Behaviour Codes, or on expert opinion.</p>
Map Projection:	North America Albers Equal Area Conic (WKID 4269)

Credits

Suggested Citation:

NatureServe Canada, 2020. Ecosystem-based Automated Range (EBAR) for *Ptelea trifoliata*, Version 1.0, Expert Reviewed (Low Star Rating) (Canadian Scope). Ottawa, Canada. Retrieved from [insert url] on [insert date]

License:

Ecosystem-based Automated Range (EBAR) Project, Copyright NatureServe Canada 2022 under CC BY 4.0 (creativecommons.org/licenses/by/4.0/)

Project Website:

www.natureserve.org/canada/ebars

Contact:

ebars-kba@natureserve.ca

Input References:

8Trees - 8Trees Inc. 2021

BISON - [United States Geological Survey](#)

GBIF - [Global Biodiversity Information Facility](#)

iNaturalist.ca - [California Academy of Sciences and the National Geographic Society](#)

iNaturalist.ca (original coordinates for obscured records) - [California Academy of Sciences and the National Geographic Society](#)

iNaturalist.org - [California Academy of Sciences and the National Geographic Society](#)

ON Element Occurrences - Natural Heritage Information Centre, Ontario Ministry of Natural Resources and Forestry

ON Observations and Source Features - Natural Heritage Information Centre, Ontario Ministry of Natural Resources and Forestry

Reviewers by Taxa:

[Reviewers by Taxa](#)