

# *Psilocarphus brevissimus* var. *brevissimus*

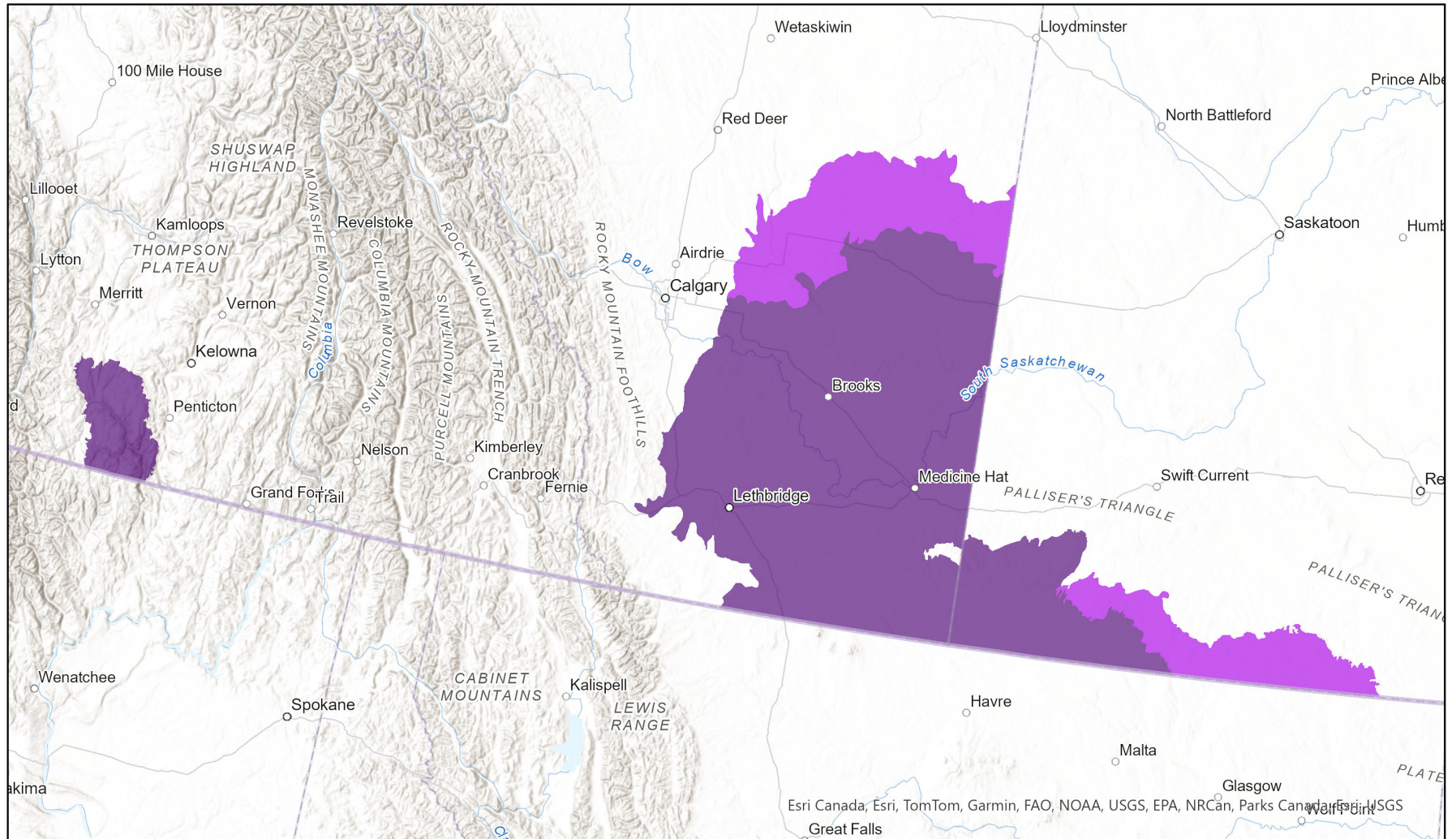


- Present
- Presence Expected
- Historical

## Ecosystem-based Automated Range (EBAR)

Date Generated: March 26, 2025; Version: 1.0; Stage: Expert Reviewed (National); Scope: Canadian

Synonyms Used: None



0 100 200 km  
Map centre: 113.0475°W 50.2687°N

Input Records - 134 AB Element Occurrences, 99 AB Source Feature Polygons, 2 BC Non-sensitive Element Occurrences, 2 BC Vascular Plant Observations, 3 BISON, 3 ECC Critical Habitat, 14 GBIF, 2 iNaturalist.ca, 3 iNaturalist.ca (original coordinates for obscured records), 5 iNaturalist.org, 13 SK Element Occurrences, 28 SK Source Feature Points, 176 SK Source Feature Polygons; Expert Reviews - Ryan Batten, Ashley Vass, Sarah Lee

© NatureServe Canada 2020 under CC BY 4.0

EBAR is relatively coarse scale data and not intended for all applications and analysis. Please see full disclaimer in metadata.

## Ecosystem-based Automated Range (EBAR) Metadata

---

### Species

National Scientific Name:	<i>Psilocarphus brevissimus</i> var. <i>brevissimus</i>
Scientific Name Reference:	Flora of North America Editorial Committee (FNA). 2006a. Flora of North America north of Mexico. Vol. 19. Magnoliophyta: Asteridae, part 6: Asteraceae, part 1. Oxford University Press, New York. xxiv + 579 pp.
National English Name:	Dwarf Woollyheads
National French Name:	Psilocarphe nain
Element National ID:	213333
Element Global ID:	158568 ( <a href="#">go to NatureServe Explorer</a> )
Element Code:	PDAST7R011
Endemism Type:	N
Canadian COSEWIC Name:	
Canadian COSEWIC ID:	

## Rank/Status

Global Rank:	G4T4? (reviewed January 13, 2012)
National Rank (Canada):	N2 (reviewed 2023)
Subnational Ranks (Canada):	AB=S2, BC=S1S2, SK=S1S2
National Rank (United States):	NNR
Subnational Ranks (United States):	CA=SNR, ID=S2, MT=S2S3, NV=S3, OR=SNR, UT=S1, WA=SNR, WY=S2
National Rank (Mexico):	None
Subnational Ranks (Mexico):	None
Canadian SARA Status:	None
Canadian COSEWIC Status:	None
US ESA Status:	None

## Range Map

Date Generated:	March 26, 2025
Version:	1.0
Stage:	Expert Reviewed (National)
Scope:	Canadian
Metadata:	<p>Primary Species - <i>Psilocarphus brevissimus</i> var. <i>brevissimus</i> ; Secondary Species - <i>Psilocarphus brevissimus</i> Nutt., <i>Psilocarphus brevissimus</i> pop. 1 , <i>Psilocarphus brevissimus</i> pop. 2</p> <p>Input Records - 134 AB Element Occurrences, 99 AB Source Feature Polygons, 2 BC Non-sensitive Element Occurrences, 2 BC Vascular Plant Observations, 3 BISON, 3 ECCC Critical Habitat, 14 GBIF, 2 iNaturalist.ca, 3 iNaturalist.ca (original coordinates for obscured records), 5 iNaturalist.org, 13 SK Element Occurrences, 28 SK Source Feature Points, 176 SK Source Feature Polygons; Expert Reviews - Ryan Batten, Ashley Vass, Sarah Lee</p>
Comments:	<p>None</p> <p><a href="#">Please see spatial data for Ecoshape-level reviewer comments.</a></p>
Disclaimer:	<p>Please review our <a href="#">methods document</a> before using EBAR.</p> <p>EBAR range data are relatively coarse scale and appropriate for screening and education purposes, but are not intended for all types of applications and analysis.</p> <p>The absence of data in any geographic areas does not necessarily mean that a species is not present.</p> <p>An ecoshape with a presence value does not necessarily mean that a species is present throughout the entire geographic area.</p>

**Presence Definitions:**

(Please see Comments above for any exceptions)

Present - the species is found within the ecoshape based on species observation data, Element Occurrences, Source Features, Canadian Federal Critical Habitat, or expert opinion.

Presence Expected - expert opinion the species may be present, or the ecoshape overlapped with a range estimate or a habitat suitability model.

Historical - all species occurrence data within the ecoshape contains observation data greater than 40 years old or an Element Occurrence (EO) that was ranked as Extirpated or Historical (EO Rank of H, H?, X or X?), or expert opinion that the species is extirpated or historical.

**Usage Type Definitions:**

(Please see Comments above for any exceptions)

Breeding - the species is thought to breed within the ecoshape based on eBird Breeding and Behaviour Codes or expert opinion.

Possible Breeding - the species is probably or possibly breeding within the ecoshape based on eBird, BBA or jurisdiction Breeding and Behaviour Codes, or on expert opinion.

**Map Projection:**

North America Albers Equal Area Conic (WKID 4269)

## Credits

**Suggested Citation:**

NatureServe Canada, 2020. Ecosystem-based Automated Range (EBAR) for *Psilocarphus brevissimus* var. *brevissimus*, Version 1.0, Expert Reviewed (National) (Canadian Scope). Ottawa, Canada. Retrieved from [insert url] on [insert date]

**License:**

Ecosystem-based Automated Range (EBAR) Project, Copyright NatureServe Canada 2024 under CC BY 4.0 ([creativecommons.org/licenses/by/4.0/](https://creativecommons.org/licenses/by/4.0/))

**Project Website:**

[www.natureserve.org/canada/ebars](https://www.natureserve.org/canada/ebars)

**Contact:**

[ebars-kba@natureserve.ca](mailto:ebars-kba@natureserve.ca)

**Input References:**

AB Element Occurrences - Alberta Conservation Information Management System, Alberta Environment and Parks, Edmonton  
AB Source Feature Polygons - Alberta Conservation Information Management System, Alberta Environment and Parks, Edmonton  
BC Non-sensitive Element Occurrences - British Columbia Conservation Data Centre  
BC Vascular Plant Observations - British Columbia Conservation Data Centre  
BISON - [United States Geological Survey](#)  
ECCC Critical Habitat - [Environment and Climate Change Canada](#)  
GBIF - [Global Biodiversity Information Facility](#)  
GBIF - [GBIF Occurrence Download https://doi.org/10.15468/dl.e3ax32](https://doi.org/10.15468/dl.e3ax32) Accessed from R via rgbif (<https://github.com/ropensci/rgbif>) on 2024-06-21  
GBIF - [GBIF.org \(29 June 2023\)](#) GBIF Occurrence Download <https://doi.org/10.15468/dl.ync22y>  
iNaturalist.ca - [California Academy of Sciences and the National Geographic Society](#)  
iNaturalist.ca (original coordinates for obscured records) - [California Academy of Sciences and the National Geographic Society](#)  
iNaturalist.org - [California Academy of Sciences and the National Geographic Society](#)  
SK Element Occurrences - Saskatchewan Conservation Data Centre  
SK Source Feature Points - Saskatchewan Conservation Data Centre  
SK Source Feature Polygons - Saskatchewan Conservation Data Centre

**Reviewers by Taxa:**

[Reviewers by Taxa](#)