

Collomia tenella

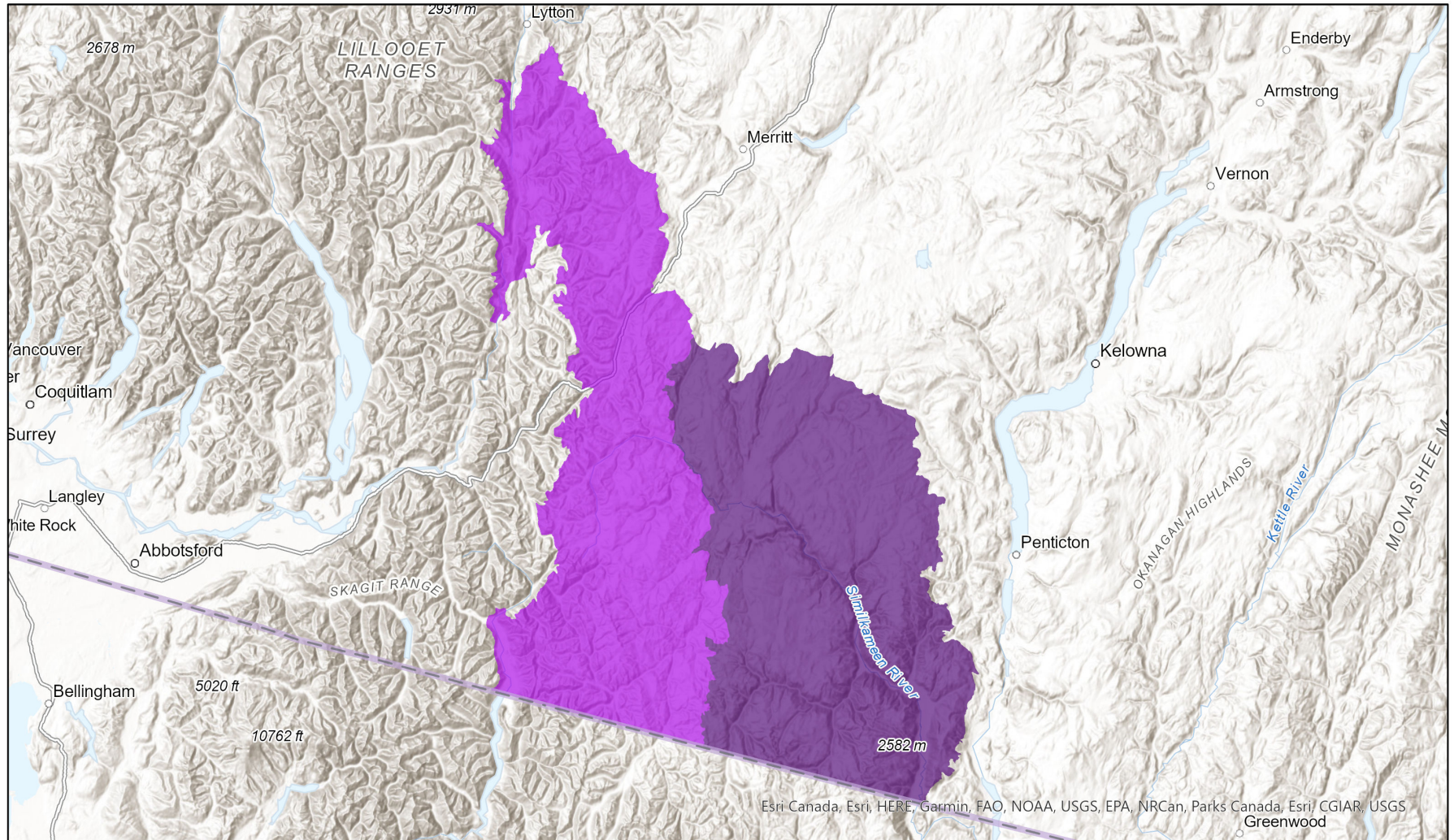


- Present
- Presence Expected
- Historical

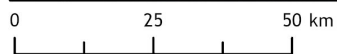
Ecosystem-based Automated Range (EBAR)

Date Generated: July 20, 2023; Version: 1.0; Stage: Expert Reviewed (National); Scope: Canadian

Synonyms Used: None



Esri Canada, Esri, HERE, Garmin, FAO, NOAA, USGS, EPA, NRCan, Parks Canada, Esri, CGIAR, USGS Greenwood



Input Records - 2 BC Non-sensitive Element Occurrences, 1 BC Vascular Plant Observations, 2 BISON, 2 ECCC Critical Habitat, 7 GBIF; Expert Reviews - BC Experts

Map centre: 120.6046° W 49.6031° N
© NatureServe Canada 2020 under CC BY 4.0

EBAR is relatively coarse scale data and not intended for all applications and analysis. Please see full disclaimer in metadata.

Ecosystem-based Automated Range (EBAR) Metadata

Species

National Scientific Name:	<i>Collomia tenella</i> Gray
Scientific Name Reference:	Kartesz, J.T. 1994. A synonymized checklist of the vascular flora of the United States, Canada, and Greenland. 2nd edition. 2 vols. Timber Press, Portland, OR.
National English Name:	Slender Collomia
National French Name:	Collomia délicat
Element National ID:	206025
Element Global ID:	157386 (go to NatureServe Explorer)
Element Code:	PDPLM02090
Endemism Type:	N
Canadian COSEWIC Name:	
Canadian COSEWIC ID:	760

Rank/Status

Global Rank:	G4? (reviewed September 29, 1987)
National Rank (Canada):	N1N2 (reviewed 2022)
Subnational Ranks (Canada):	BC=S1S2
National Rank (United States):	NNR
Subnational Ranks (United States):	CA=S1, ID=SNR, NV=SNR, OR=SNR, UT=S2?, WA=SNR, WY=S3
National Rank (Mexico):	None
Subnational Ranks (Mexico):	None
Canadian SARA Status:	Endangered/En voie de disparition (July 14, 2005)
Canadian COSEWIC Status:	Endangered (November 01, 2003)
US ESA Status:	None

Range Map

Date Generated:	July 20, 2023
Version:	1.0
Stage:	Expert Reviewed (National)
Scope:	Canadian
Metadata:	Primary Species - <i>Collomia tenella</i> Gray Input Records - 2 BC Non-sensitive Element Occurrences, 1 BC Vascular Plant Observations, 2 BISON, 2 ECCC Critical Habitat, 7 GBIF; Expert Reviews - BC Experts
Comments:	None Please see spatial data for Ecoshape-level reviewer comments.
Disclaimer:	Please review our methods document before using EBAR. EBAR range data are relatively coarse scale and appropriate for screening and education purposes, but are not intended for all types of applications and analysis. The absence of data in any geographic areas does not necessarily mean that a species is not present. An ecoshape with a presence value does not necessarily mean that a species is present throughout the entire geographic area.
Presence Definitions:	(Please see Comments above for any exceptions) Present - the species is found within the ecoshape based on species observation data, Element Occurrences, Source Features, Canadian Federal Critical Habitat, or expert opinion. Presence Expected - expert opinion the species may be present, or the ecoshape overlapped with a range estimate or a habitat suitability model. Historical - all species occurrence data within the ecoshape contains observation data greater than 40 years old or an Element Occurrence (EO) that was ranked as Extirpated or Historical (EO Rank of H, H?, X or X?).
Usage Type Definitions:	(Please see Comments above for any exceptions) Breeding - the species is thought to breed within the ecoshape based on eBird Breeding and Behaviour Codes or expert opinion. Possible Breeding - the species is probably or possibly breeding within the ecoshape based on eBird, BBA or jurisdiction Breeding and Behaviour Codes, or on expert opinion.
Map Projection:	North America Albers Equal Area Conic (WKID 4269)

Credits

Suggested Citation:	NatureServe Canada, 2020. Ecosystem-based Automated Range (EBAR) for <i>Collomia tenella</i> , Version 1.0, Expert Reviewed (National) (Canadian Scope). Ottawa, Canada. Retrieved from [insert url] on [insert date]
License:	Ecosystem-based Automated Range (EBAR) Project, Copyright NatureServe Canada 2022 under CC BY 4.0 (creativecommons.org/licenses/by/4.0/)
Project Website:	www.natureserve.org/canada/ebar
Contact:	ebar-kba@natureserve.ca
Input References:	BC Non-sensitive Element Occurrences - British Columbia Conservation Data Centre BC Vascular Plant Observations - British Columbia Conservation Data Centre BISON - United States Geological Survey (https://bison.usgs.gov/) ECCC Critical Habitat - Environment and Climate Change Canada (http://data.ec.gc.ca/data/species/protectrestore/critical-habitat-species-at-risk-canada/) GBIF - Global Biodiversity Information Facility (https://www.gbif.org)
Reviewers by Taxa:	Reviewers by Taxa