

Arabis adpressipilis



Ecosystem-based Automated Range (EBAR)

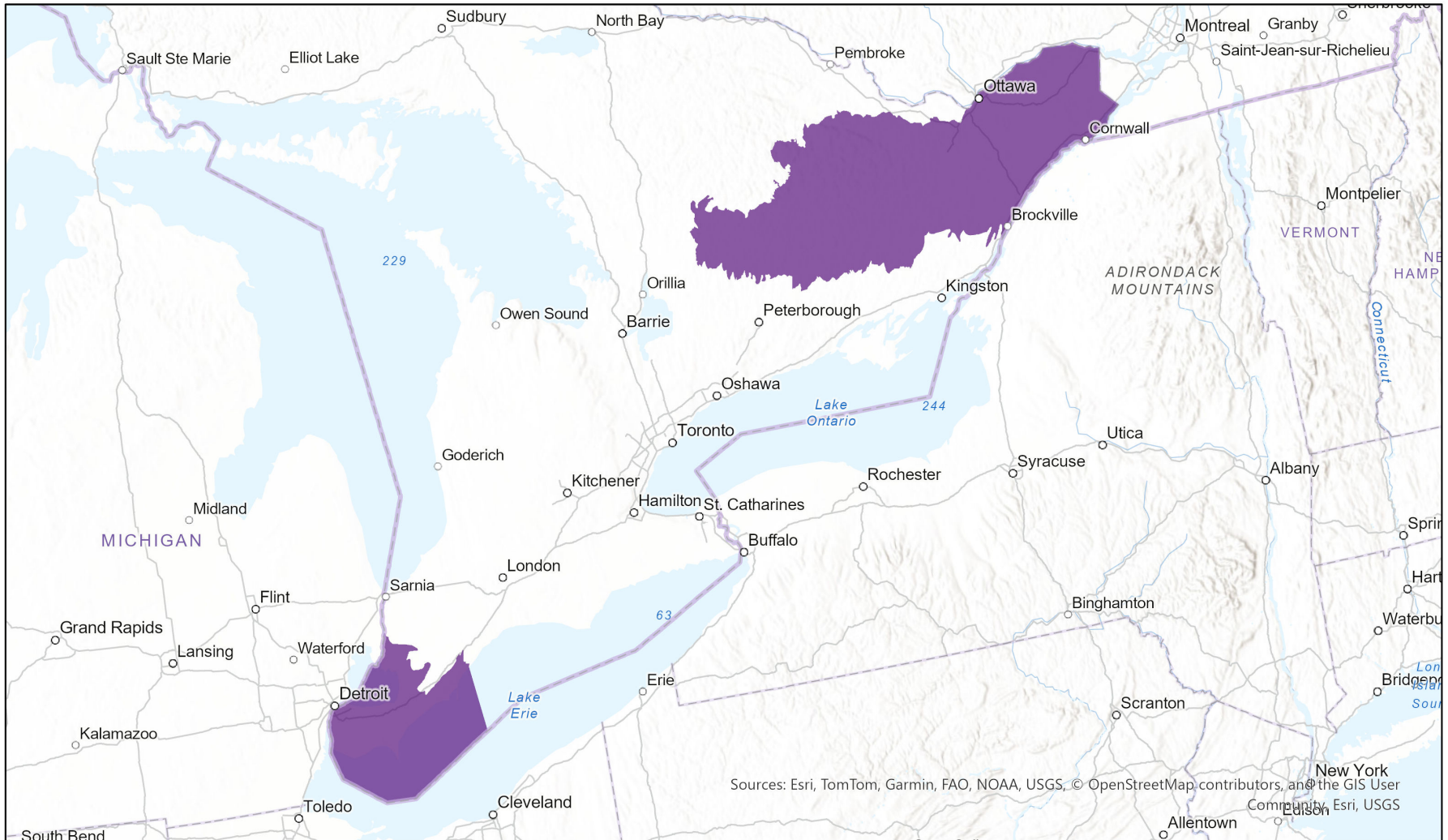
Date Generated: March 20, 2026; Version: 1.0; Stage: Expert Reviewed (National); Scope: Canadian

Synonyms Used: *Arabis pycnocarpa* var. *adpressipilis*, *Arabis hirsuta*

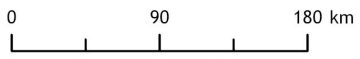
Present

Presence Expected

Historical



Sources: Esri, TomTom, Garmin, FAO, NOAA, USGS, © OpenStreetMap contributors, and the GIS User Community, Esri, USGS



Input Records - 4 GBIF (1985-2025), 4 iNaturalist.ca (2017-2023), 1 ON Element Occurrences (1983), 9 ON Observations and Source Features (1983-2023); Expert Reviews - Wasyl Bakowsky, Sarah Rabideau

Map centre: 78.8482° W 43.7189° N
© NatureServe Canada 2026 under CC BY 4.0

EBAR is relatively coarse scale data and not intended for all applications and analysis. Please see full disclaimer in metadata.

Ecosystem-based Automated Range (EBAR) Metadata

Species

National Scientific Name:	<i>Arabis adpressipilis</i> (M. Hopkins) Al-Shehbaz
Scientific Name Reference:	Al-Shehbaz, I.A. 2017. Nomenclatural adjustments in North American Arabis, Chinese Hilliella, and South American Neuontobotrys (Brassicaceae). Harvard Papers in Botany 22: 141-144
National English Name:	Soft-haired Rockcress
National French Name:	Arabette à poils couchés
Element National ID:	241435
Element Global ID:	156807 (go to NatureServe Explorer)
Element Code:	PDBRA060U1
Endemism Type:	N
Canadian COSEWIC Name:	
Canadian COSEWIC ID:	
English COSEWIC Common Name:	
French COSEWIC Common Name:	

Rank/Status

Global Rank:	G5T4 (reviewed June 30, 1996)
National Rank (Canada):	N1? (reviewed 2021)
Subnational Ranks (Canada):	ON=S1?
National Rank (United States):	N4
Subnational Ranks (United States):	AR=S1?, IA=SNR, IL=SNR, IN=SNR, KS=S1, KY=S1, MD=S1S2, MN=SNR, MO=SNR, NC=S1, NJ=S1, NY=SH, OH=S3, PA=S1, TN=S1S2, VA=S1S2
National Rank (Mexico):	None
Subnational Ranks (Mexico):	None
Canadian SARA Status:	None
Canadian COSEWIC Status:	None
US ESA Status:	None

Range Map

Date Generated:	March 20, 2026
Version:	1.0
Stage:	Expert Reviewed (National)
Scope:	Canadian
Metadata:	Primary Species - <i>Arabis adpressipilis</i> (M. Hopkins) Al-Shehbaz; Synonyms - <i>Arabis pycnocarpa</i> var. <i>adpressipilis</i> M. Hopkins, <i>Arabis hirsuta</i> (L.) Scop. Input Records - 4 GBIF (1985-2025), 4 iNaturalist.ca (2017-2023), 1 ON Element Occurrences (1983), 9 ON Observations and Source Features (1983-2023); Expert Reviews - Wasyl Bakowsky, Sarah Rabideau
Comments:	None Please see spatial data for Ecoshape-level reviewer comments.
Disclaimer:	Please review our methods document before using EBAR. EBAR range data are relatively coarse scale and appropriate for screening and education purposes, but are not intended for all types of applications and analysis. The absence of data in any geographic areas does not necessarily mean that a species is not present. An ecoshape with a presence value does not necessarily mean that a species is present throughout the entire geographic area.
Presence Definitions:	(Please see Comments above for any exceptions) Present - the species is found within the ecoshape based on species observation data, Element Occurrences, Source Features, Canadian Federal Critical Habitat, or expert opinion. Presence Expected - expert opinion the species may be present, or the ecoshape overlapped with a range estimate or a habitat suitability model. Historical - all species occurrence data within the ecoshape contains observation data greater than 40 years old or an Element Occurrence (EO) that was ranked as Extirpated or Historical (EO Rank of H, H?, X or X?), or expert opinion that the species is extirpated or historical.
Usage Type Definitions:	(Please see Comments above for any exceptions) Breeding - the species is thought to breed within the ecoshape based on eBird Breeding and Behaviour Codes or expert opinion. Possible Breeding - the species is probably or possibly breeding within the ecoshape based on eBird, BBA or jurisdiction Breeding and Behaviour Codes, or on expert opinion.
Map Projection:	North America Albers Equal Area Conic (WKID 4269)

Credits

Suggested Citation:	NatureServe Canada, 2026. Ecosystem-based Automated Range (EBAR) for Arabis adpressipilis, Version 1.0, Expert Reviewed (National) (Canadian Scope). Ottawa, Canada. Retrieved from [insert url] on [insert date]
License:	Ecosystem-based Automated Range (EBAR) Project, Copyright NatureServe Canada 2026 under CC BY 4.0 (creativecommons.org/licenses/by/4.0/)
Project Website:	www.natureserve.org/canada/ebar
Contact:	ebar-kba@natureserve.ca
Input References:	GBIF - Global Biodiversity Information Facility iNaturalist.ca - California Academy of Sciences and the National Geographic Society ON Element Occurrences - Natural Heritage Information Centre, Ontario Ministry of Natural Resources and Forestry ON Observations and Source Features - Natural Heritage Information Centre, Ontario Ministry of Natural Resources and Forestry
Reviewers by Taxa:	Reviewers by Taxa