

Orthocarpus barbatus

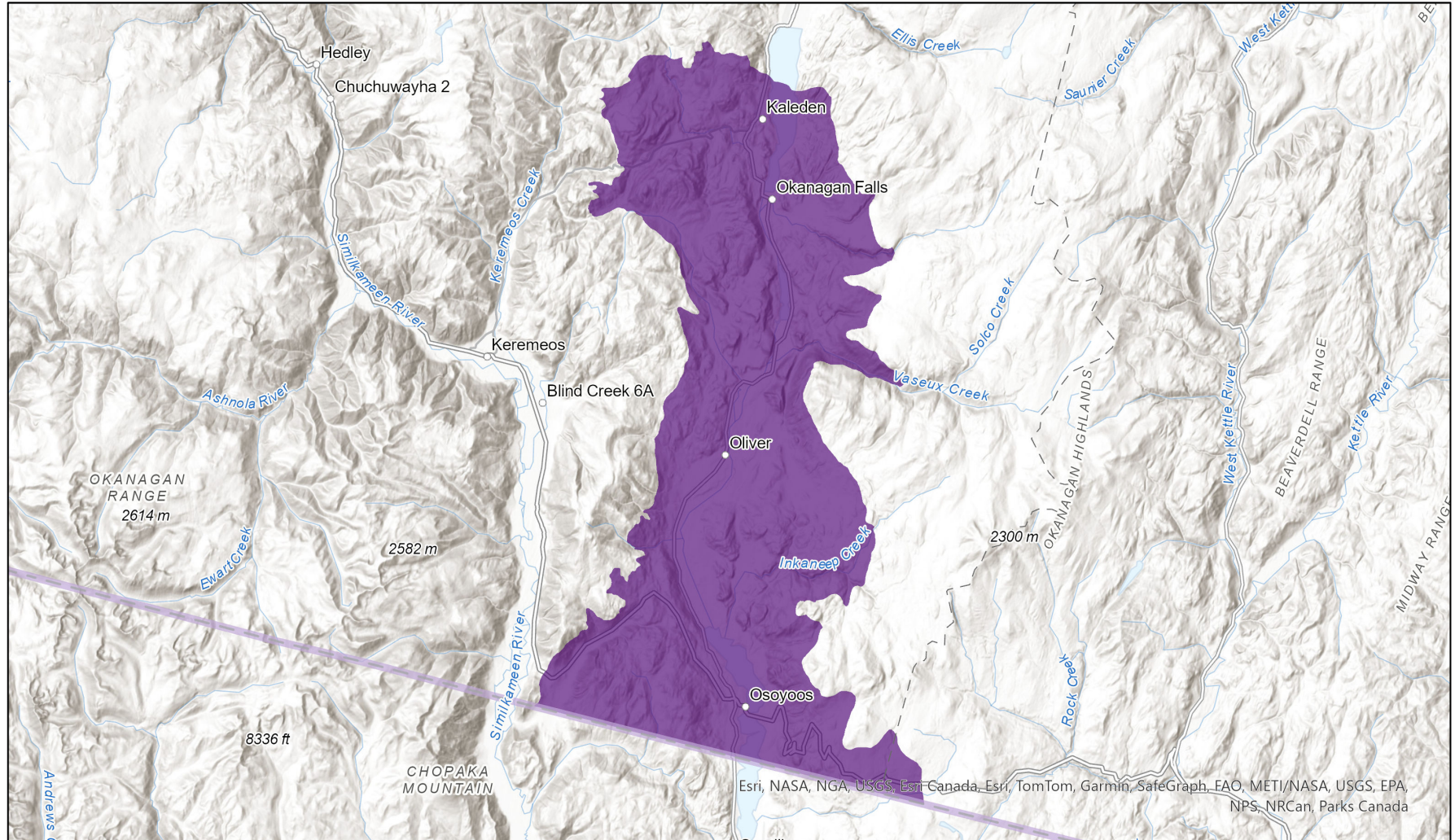


- Present
- Presence Expected
- Historical

Ecosystem-based Automated Range (EBAR)

Date Generated: November 2, 2020; Version: 1.0; Stage: Expert Reviewed; Scope: Canadian

Synonyms Used: None



0 9.5 19 km Input Records - 7 BC Element Occurrences, 4 BC Incidental Observations, 418 BC Survey Observations, 8 BC Vascular Plant Observations, 3 BISON, 10 ECCC Critical Habitat, 12 GBIF, 2 iNaturalist, 1 U of O Range Map Polygons; Expert Reviews - 2

Map centre: 119.5548°W 49.2024°N
© NatureServe Canada 2020 under CC BY 4.0

EBAR is relatively coarse scale data and not intended for all applications and analysis. Please see full disclaimer in metadata.

Ecosystem-based Automated Range (EBAR) Metadata

Species

National Scientific Name:	<i>Orthocarpus barbatus</i> Cotton
Scientific Name Reference:	Flora of North America Editorial Committee. 2019. Flora of North America North of Mexico. Vol. 17: Magnoliophyta: Tetrachondraceae to Orobanchaceae. Oxford Univ. Press, New York. xxiv + 737 pp.
National English Name:	Grand Coulee Owl's-clover
National French Name:	Orthocarpe barbu
Element National ID:	215027
Element Global ID:	156080 (go to NatureServe Explorer)
Element Code:	PDSCR1H020
Endemism Type:	N
Canadian COSEWIC Name:	
Canadian COSEWIC ID:	862

Rank/Status

Global Rank:	G2G3 (reviewed January 30, 2008)
National Rank (Canada):	N2 (reviewed 2023)
Subnational Ranks (Canada):	BC=S2
National Rank (United States):	NNR
Subnational Ranks (United States):	WA=SNR
National Rank (Mexico):	None
Subnational Ranks (Mexico):	None
Canadian SARA Status:	Endangered/En voie de disparition (August 15, 2006)
Canadian COSEWIC Status:	Endangered (May 05, 2005)
US ESA Status:	None

Range Map

Date Generated:	November 02, 2020
Version:	1.0
Stage:	Expert Reviewed
Scope:	Canadian
Metadata:	<p>Primary Species Name - <i>Orthocarpus barbatus</i> (Kartesz, 1994)</p> <p>Input Records - 7 BC Element Occurrences, 4 BC Incidental Observations, 418 BC Survey Observations, 8 BC Vascular Plant Observations, 3 BISON, 10 ECCC Critical Habitat, 12 GBIF, 2 iNaturalist, 1 U of O Range Map Polygons; Expert Reviews - 2</p>
Comments:	<p>None</p> <p>Please see spatial data for Ecoshape-level reviewer comments.</p>
Disclaimer:	<p>Please review our methods document before using EBAR.</p> <p>EBAR range data are relatively coarse scale and appropriate for screening and education purposes, but are not intended for all types of applications and analysis.</p> <p>The absence of data in any geographic areas does not necessarily mean that a species is not present.</p> <p>An ecoshape with a presence value does not necessarily mean that a species is present throughout the entire geographic area.</p>
Presence Definitions:	<p>(Please see Comments above for any exceptions)</p> <p>Present - the species is found within the ecoshape based on species observation data, Element Occurrences, Source Features, Canadian Federal Critical Habitat, or expert opinion.</p> <p>Presence Expected - expert opinion the species may be present, or the ecoshape overlapped with a range estimate or a habitat suitability model.</p> <p>Historical - all species occurrence data within the ecoshape contains observation data greater than 40 years old or an Element Occurrence (EO) that was ranked as Extirpated or Historical (EO Rank of H, H?, X or X?).</p>
Usage Type Definitions:	<p>(Please see Comments above for any exceptions)</p> <p>Breeding - the species is thought to breed within the ecoshape based on eBird Breeding and Behaviour Codes or expert opinion.</p> <p>Possible Breeding - the species is probably or possibly breeding within the ecoshape based on eBird, BBA or jurisdiction Breeding and Behaviour Codes, or on expert opinion.</p>
Map Projection:	North America Albers Equal Area Conic (WKID 4269)

Credits

Suggested Citation:

NatureServe Canada, 2020. Ecosystem-based Automated Range (EBAR) for *Orthocarpus barbatus*, Version 1.0, Expert Reviewed (Canadian Scope). Ottawa, Canada. Retrieved from [insert url] on [insert date]

License:

Ecosystem-based Automated Range (EBAR) Project, Copyright NatureServe Canada 2022 under CC BY 4.0 (creativecommons.org/licenses/by/4.0/)

Project Website:

www.natureserve.org/canada/ebar

Contact:

ebbar-kba@natureserve.ca

Input References:

BC Non-sensitive Element Occurrences - British Columbia Conservation Data Centre
BC Survey Observations - British Columbia Conservation Data Centre
BC UNVETTED Incidental Observations - British Columbia Conservation Data Centre
BC Vascular Plant Observations - British Columbia Conservation Data Centre
BISON - [United States Geological Survey](#)
ECCC Critical Habitat - [Environment and Climate Change Canada](#)
GBIF - [Global Biodiversity Information Facility](#)
iNaturalist.ca - [California Academy of Sciences and the National Geographic Society](#)
U of O Range Map Polygons - University of Ottawa

Reviewers by Taxa:

[Reviewers by Taxa](#)