

# *Erigeron philadelphicus* var. *provancheri*

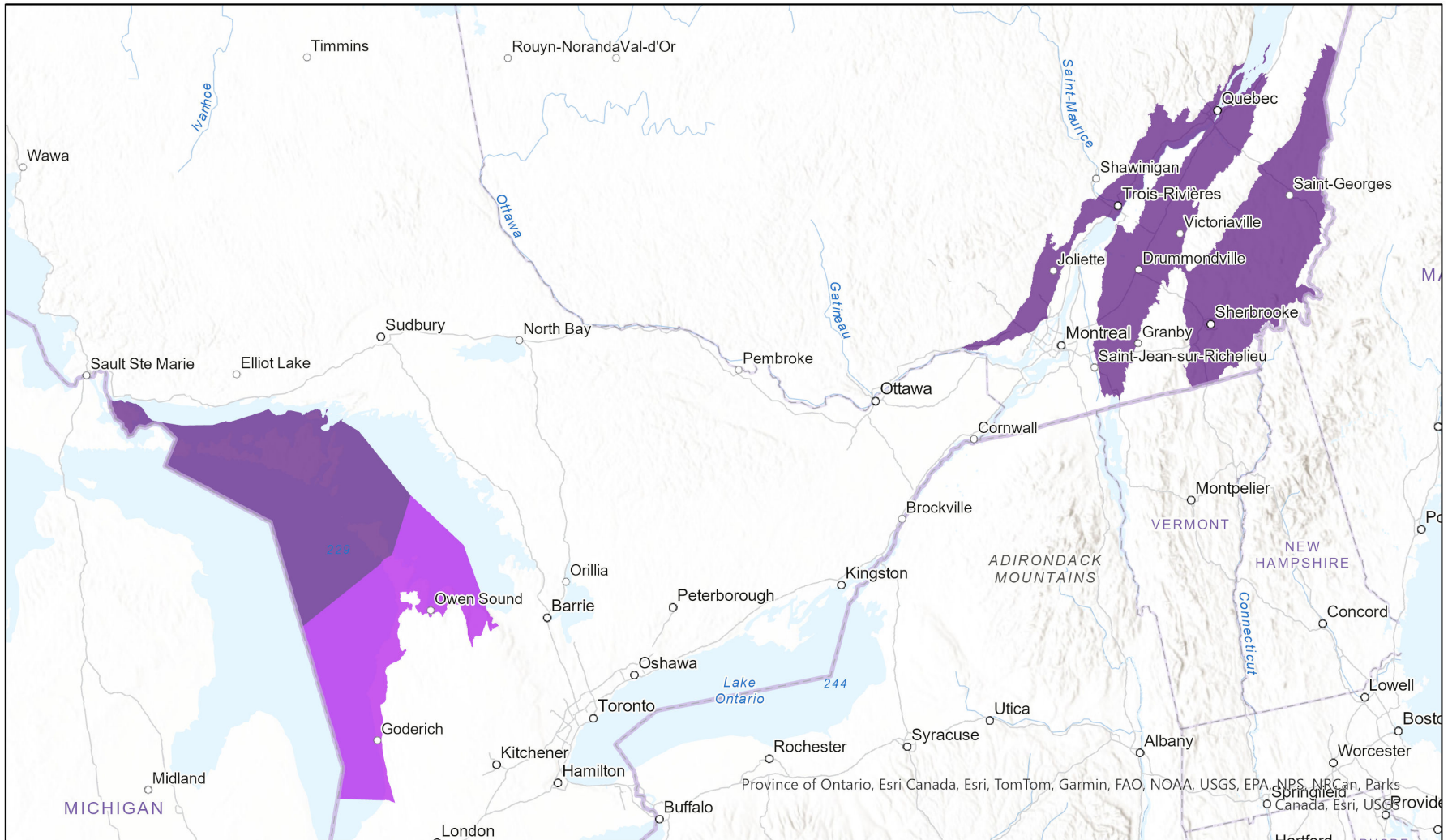


## Ecosystem-based Automated Range (EBAR)

Date Generated: March 8, 2022; Version: 1.0; Stage: Expert Reviewed (National); Scope: Canadian

Synonyms Used: *Erigeron philadelphicus provancheri*

- Present
- Presence Expected
- Historical



0 100 200 km

Input Records - 13 BISON, 404 Coursol, pers. comm., 1 GBIF, 4 iNaturalist.ca, 7 ON Element Occurrences, 11 ON Observations and Source Features, 16 QC Element Occurrences; Expert Reviews - Tyler Miller, Frédéric Coursol

Map centre: 77.3902° W 45.4889° N  
 © NatureServe Canada 2020 under CC BY 4.0

EBAR is relatively coarse scale data and not intended for all applications and analysis. Please see full disclaimer in metadata.

## Ecosystem-based Automated Range (EBAR) Metadata

---

### Species

National Scientific Name:	<i>Erigeron philadelphicus</i> var. <i>provancheri</i> (Victorin & Rouss.) Boivin
Scientific Name Reference:	Flora of North America Editorial Committee. 2006b. Flora of North America North of Mexico. Vol. 20. Magnoliophyta: Asteridae, part 7: Asteraceae, part 2. Oxford Univ. Press, New York. xxii + 666 pp.
National English Name:	Provancher's Fleabane
National French Name:	Vergerette de Provancher
Element National ID:	197444
Element Global ID:	153135 ( <a href="#">go to NatureServe Explorer</a> )
Element Code:	PDAST3M362
Endemism Type:	N
Canadian COSEWIC Name:	
Canadian COSEWIC ID:	262

## Rank/Status

<b>Global Rank:</b>	G5T3 (reviewed August 11, 2015)
<b>National Rank (Canada):</b>	N3 (reviewed 2015)
<b>Subnational Ranks (Canada):</b>	QC=S3
<b>National Rank (United States):</b>	N1N2
<b>Subnational Ranks (United States):</b>	CT=SNR, NY=S2, OH=SNR, VT=S1
<b>National Rank (Mexico):</b>	None
<b>Subnational Ranks (Mexico):</b>	None
<b>Canadian SARA Status:</b>	None
<b>Canadian COSEWIC Status:</b>	Data Deficient (May 01, 2023)
<b>US ESA Status:</b>	None

## Range Map

<b>Date Generated:</b>	March 08, 2022
<b>Version:</b>	1.0
<b>Stage:</b>	Expert Reviewed (National)
<b>Scope:</b>	Canadian
<b>Metadata:</b>	Primary Species Name - <i>Erigeron philadelphicus</i> var. <i>provancheri</i> (Victorin & Rouss.) Boivin; Synonyms - <i>Erigeron philadelphicus provancheri</i> Input Records - 13 BISON, 404 Coursol, pers. comm., 1 GBIF, 4 iNaturalist.ca, 7 ON Element Occurrences, 11 ON Observations and Source Features, 16 QC Element Occurrences; Expert Reviews - Tyler Miller, Frédéric Coursol
<b>Comments:</b>	None <a href="#">Please see spatial data for Ecoshape-level reviewer comments.</a>
<b>Disclaimer:</b>	Please review our <a href="#">methods document</a> before using EBAR.  EBAR range data are relatively coarse scale and appropriate for screening and education purposes, but are not intended for all types of applications and analysis.  The absence of data in any geographic areas does not necessarily mean that a species is not present.  An ecoshape with a presence value does not necessarily mean that a species is present throughout the entire geographic area.
<b>Presence Definitions:</b>	(Please see Comments above for any exceptions)  Present - the species is found within the ecoshape based on species observation data, Element Occurrences, Source Features, Canadian Federal Critical Habitat, or expert opinion.  Presence Expected - expert opinion the species may be present, or the ecoshape overlapped with a range estimate or a habitat suitability model.  Historical - all species occurrence data within the ecoshape contains observation data greater than 40 years old or an Element Occurrence (EO) that was ranked as Extirpated or Historical (EO Rank of H, H?, X or X?).
<b>Usage Type Definitions:</b>	(Please see Comments above for any exceptions)  Breeding - the species is thought to breed within the ecoshape based on eBird Breeding and Behaviour Codes or expert opinion.  Possible Breeding - the species is probably or possibly breeding within the ecoshape based on eBird, BBA or jurisdiction Breeding and Behaviour Codes, or on expert opinion.
<b>Map Projection:</b>	North America Albers Equal Area Conic (WKID 4269)

## Credits

<b>Suggested Citation:</b>	NatureServe Canada, 2020. Ecosystem-based Automated Range (EBAR) for <i>Erigeron philadelphicus</i> var. <i>provancheri</i> , Version 1.0, Expert Reviewed (National) (Canadian Scope). Ottawa, Canada. Retrieved from [insert url] on [insert date]
<b>License:</b>	Ecosystem-based Automated Range (EBAR) Project, Copyright NatureServe Canada 2022 under CC BY 4.0 ( <a href="https://creativecommons.org/licenses/by/4.0/">creativecommons.org/licenses/by/4.0/</a> )
<b>Project Website:</b>	<a href="http://www.natureserve.org/canada/ebar">www.natureserve.org/canada/ebar</a>
<b>Contact:</b>	<a href="mailto:ebar-kba@natureserve.ca">ebar-kba@natureserve.ca</a>
<b>Input References:</b>	BISON - <a href="#">United States Geological Survey</a> Coursol, pers. comm. - Frédéric Coursol, pers. comm. 2021 GBIF - <a href="#">Global Biodiversity Information Facility</a> iNaturalist.ca (original coordinates for obscured records) - <a href="#">California Academy of Sciences and the National Geographic Society</a> ON Element Occurrences - Natural Heritage Information Centre, Ontario Ministry of Natural Resources and Forestry ON Observations and Source Features - Natural Heritage Information Centre, Ontario Ministry of Natural Resources and Forestry QC Element Occurrences - Centre de Données sur le Patrimoine Naturel du Québec
<b>Reviewers by Taxa:</b>	<a href="#">Reviewers by Taxa</a>