

# *Symphyotrichum praealtum*

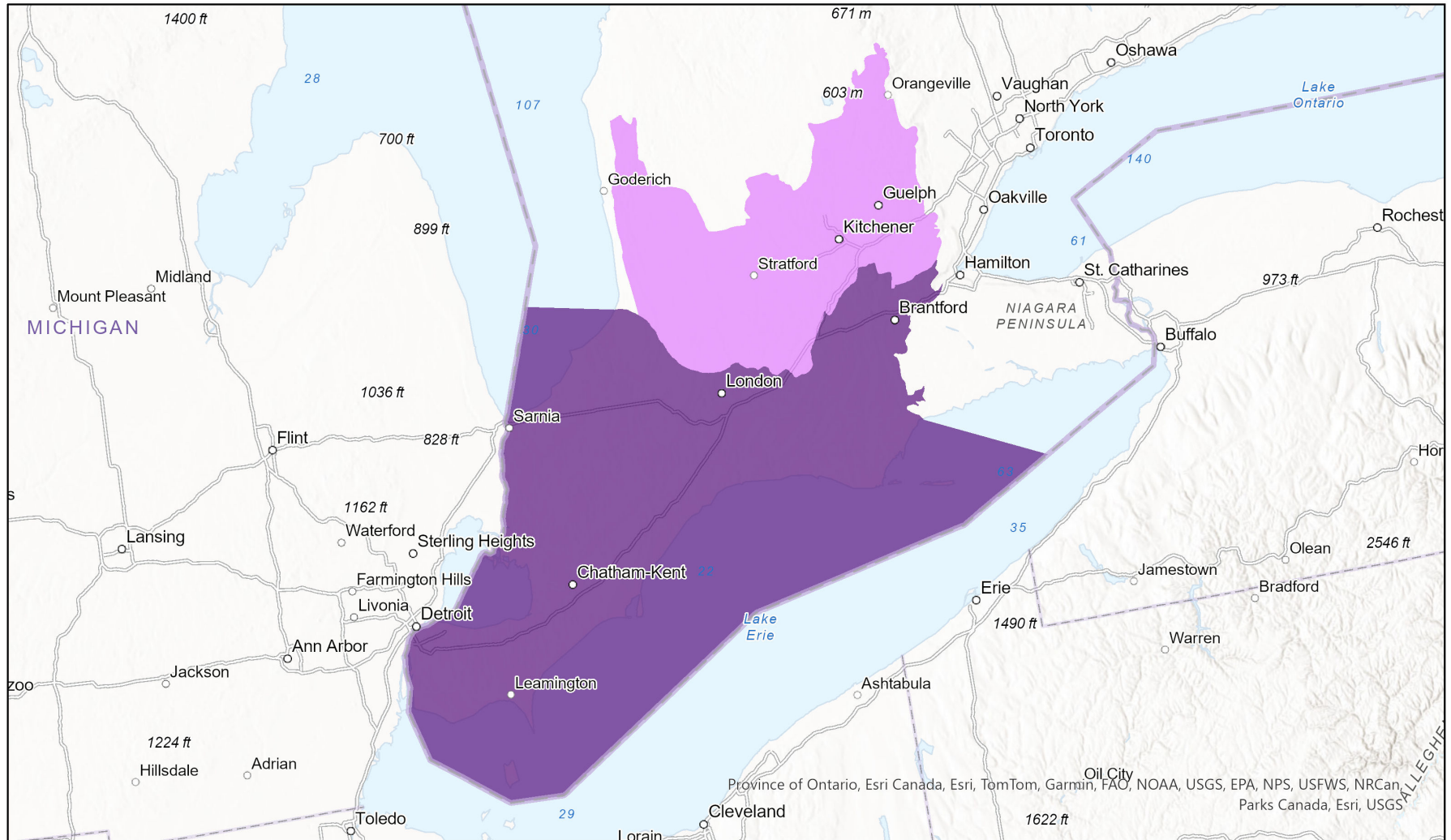


## Ecosystem-based Automated Range (EBAR)

Date Generated: October 1, 2024; Version: 1.0; Stage: Expert Reviewed (National); Scope: Canadian

Synonyms Used: None

- Present
- Presence Expected
- Historical



0 50 100 km

Input Records - 1 ACCDC Observations, 5 BISON, 81 GBIF, 1 iDigBio, 124 iNaturalist.ca, 17 iNaturalist.ca (original coordinates for obscured records), 62 iNaturalist.org, 18 ON Element Occurrences, 215 ON Observations and Source Features; Expert Reviews - Sean Blaney, Wasyl Bakowsky

Map centre: 81.2474° W 42.8797° N  
 © NatureServe Canada 2020 under CC BY 4.0

EBAR is relatively coarse scale data and not intended for all applications and analysis. Please see full disclaimer in metadata.

## Ecosystem-based Automated Range (EBAR) Metadata

---

### Species

National Scientific Name:	<i>Symphotrichum praealtum</i> (Poir.) Nesom
Scientific Name Reference:	Flora of North America Editorial Committee (FNA). 2006b. Flora of North America north of Mexico. Vol. 20. Magnoliophyta: Asteridae, part 7: Asteraceae, part 2. Oxford Univ. Press, New York. xxii + 666 pp.
National English Name:	Willowleaf Aster
National French Name:	Aster très élevé
Element National ID:	219453
Element Global ID:	152458 ( <a href="#">go to NatureServe Explorer</a> )
Element Code:	PDASTE8200
Endemism Type:	N
Canadian COSEWIC Name:	
Canadian COSEWIC ID:	570

## Rank/Status

Global Rank:	G5 (reviewed February 07, 2024)
National Rank (Canada):	N2 (reviewed 2023)
Subnational Ranks (Canada):	NB=SNA, ON=S2
National Rank (United States):	N5 (reviewed 2024)
Subnational Ranks (United States):	AL=SNR, AR=SNR, CT=SU, DC=SX, FL=SNR, GA=S1?, IA=S4, IL=SNR, IN=SNR, KS=SNR, KY=SNR, LA=SNR, MA=S1, MD=S1, ME=SNR, MI=S3, MN=SNR, MO=SNR, MS=SNR, NC=SNR, NE=SNR, NH=SNR, NJ=SNR, NM=SNR, NY=SNR, OH=SNR, OK=SNR, PA=S4, RI=SNR, SD=SNR, TN=S1, TX=SNR, VA=S1, VT=SNR, WI=SNR, WV=S3
National Rank (Mexico):	None
Subnational Ranks (Mexico):	None
Canadian SARA Status:	Threatened/Menacée (January 12, 2005)
Canadian COSEWIC Status:	Special Concern (May 09, 2024)
US ESA Status:	None

## Range Map

Date Generated:	October 01, 2024
Version:	1.0
Stage:	Expert Reviewed (National)
Scope:	Canadian
Metadata:	Primary Species - <i>Symphyotrichum praealtum</i> (Poir.) Nesom; Secondary Species - <i>Symphyotrichum praealtum</i> var. <i>praealtum</i> Input Records - 1 ACCDC Observations, 5 BISON, 81 GBIF, 1 iDigBio, 124 iNaturalist.ca, 17 iNaturalist.ca (original coordinates for obscured records), 62 iNaturalist.org, 18 ON Element Occurrences, 215 ON Observations and Source Features; Expert Reviews - Sean Blaney, Wasyl Bakowsky
Comments:	None <a href="#">Please see spatial data for Ecoshape-level reviewer comments.</a>
Disclaimer:	Please review our <a href="#">methods document</a> before using EBAR. EBAR range data are relatively coarse scale and appropriate for screening and education purposes, but are not intended for all types of applications and analysis. The absence of data in any geographic areas does not necessarily mean that a species is not present.

An ecoshape with a presence value does not necessarily mean that a species is present throughout the entire geographic area.

**Presence Definitions:**

(Please see Comments above for any exceptions)

Present - the species is found within the ecoshape based on species observation data, Element Occurrences, Source Features, Canadian Federal Critical Habitat, or expert opinion.

Presence Expected - expert opinion the species may be present, or the ecoshape overlapped with a range estimate or a habitat suitability model.

Historical - all species occurrence data within the ecoshape contains observation data greater than 40 years old or an Element Occurrence (EO) that was ranked as Extirpated or Historical (EO Rank of H, H?, X or X?), or expert opinion that the species is extirpated or historical.

**Usage Type Definitions:**

(Please see Comments above for any exceptions)

Breeding - the species is thought to breed within the ecoshape based on eBird Breeding and Behaviour Codes or expert opinion.

Possible Breeding - the species is probably or possibly breeding within the ecoshape based on eBird, BBA or jurisdiction Breeding and Behaviour Codes, or on expert opinion.

**Map Projection:**

North America Albers Equal Area Conic (WKID 4269)

## Credits

**Suggested Citation:**

NatureServe Canada, 2020. Ecosystem-based Automated Range (EBAR) for *Symphytotrichum praealtum*, Version 1.0, Expert Reviewed (National) (Canadian Scope). Ottawa, Canada. Retrieved from [insert url] on [insert date]

**License:**

Ecosystem-based Automated Range (EBAR) Project, Copyright NatureServe Canada 2024 under CC BY 4.0 ([creativecommons.org/licenses/by/4.0/](https://creativecommons.org/licenses/by/4.0/))

**Project Website:**

[www.natureserve.org/canada/ebar](http://www.natureserve.org/canada/ebar)

**Contact:**

[ebar-kba@natureserve.ca](mailto:ebar-kba@natureserve.ca)

**Input References:**

ACCDC Observations - Atlantic Canada Conservation Data Centre

BISON - [United States Geological Survey](#)

GBIF - [Global Biodiversity Information Facility](#)

GBIF - [GBIF Occurrence Download https://doi.org/10.15468/dl.e3ax32](https://doi.org/10.15468/dl.e3ax32) Accessed from R via rgbif (<https://github.com/ropensci/rgbif>) on 2024-06-21

GBIF - [GBIF.org \(29 June 2023\) GBIF Occurrence Download https://doi.org/10.15468/dl.ync22y](https://doi.org/10.15468/dl.ync22y)

iDigBio - [Integrated Digital Biocollection](#)

iNaturalist.ca - [California Academy of Sciences and the National Geographic Society](#)

iNaturalist.ca (original coordinates for obscured records) - [California Academy of Sciences and the National Geographic Society](#)

iNaturalist.org - [California Academy of Sciences and the National Geographic Society](#)

ON Element Occurrences - Natural Heritage Information Centre, Ontario Ministry of Natural Resources and Forestry

ON Observations and Source Features - Natural Heritage Information Centre, Ontario Ministry of Natural Resources and Forestry

**Reviewers by Taxa:**

[Reviewers by Taxa](#)