

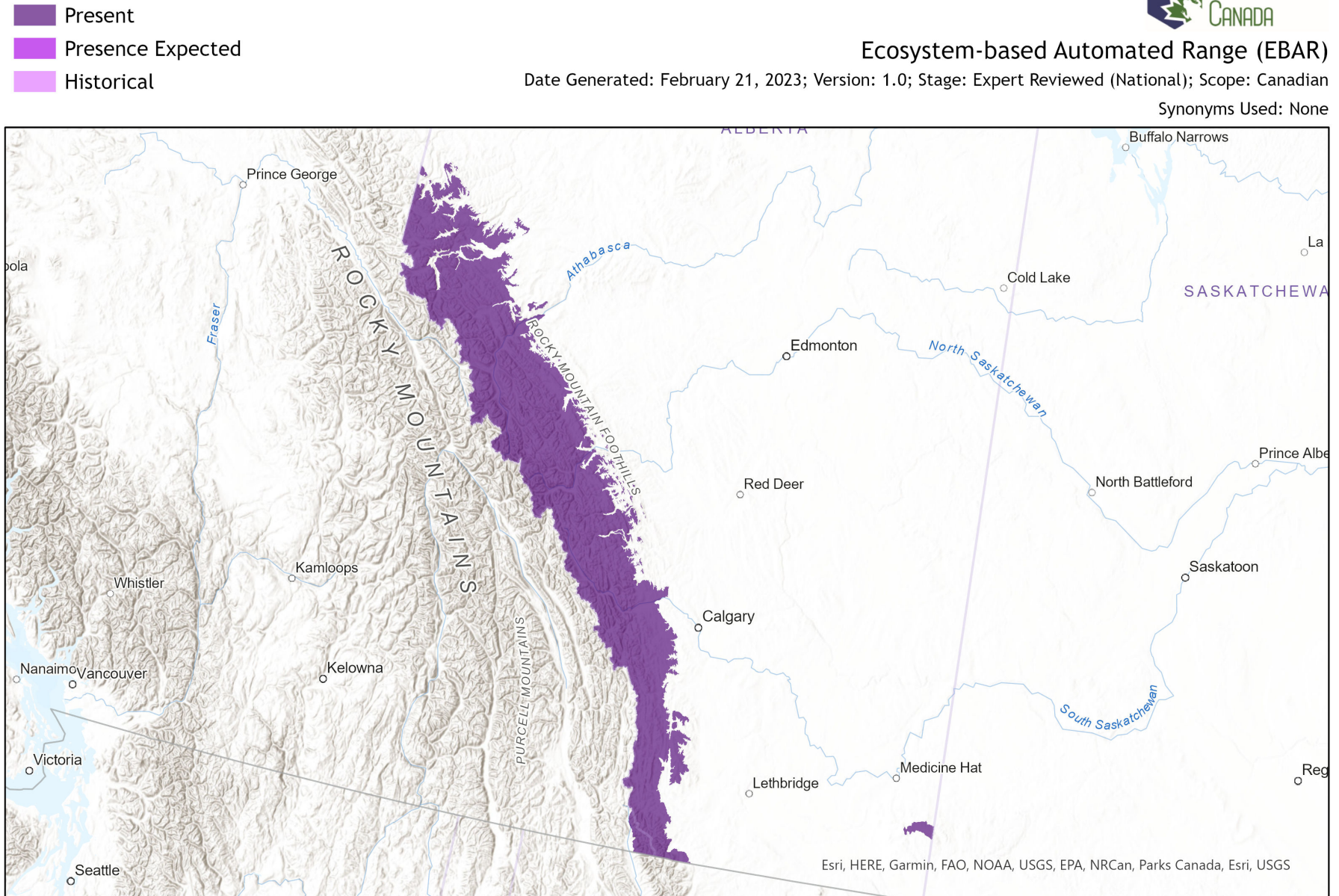
# Brickellia grandiflora



## Ecosystem-based Automated Range (EBAR)

Date Generated: February 21, 2023; Version: 1.0; Stage: Expert Reviewed (National); Scope: Canadian

Synonyms Used: None



0 120 240 km Input Records - 14 AB Element Occurrences, 17 AB Source Feature Polygons, 2 BC Non-sensitive Element Occurrences, 2 BC Vascular Plant Observations, 12 BISON, 55 GBIF, 1 iDigBio, 19 iNaturalist.ca; Expert Reviews - Ryan Batten, Varina Crisfield

Map centre: 114.89°W 51.9832°N  
© NatureServe Canada 2020 under CC BY 4.0

EBAR is relatively coarse scale data and not intended for all applications and analysis. Please see full disclaimer in metadata.

## Ecosystem-based Automated Range (EBAR) Metadata

---

### Species

National Scientific Name:	<i>Brickellia grandiflora</i> (Hook.) Nutt.
Scientific Name Reference:	Kartesz, J.T. 1994. A synonymized checklist of the vascular flora of the United States, Canada, and Greenland. 2nd edition. 2 vols. Timber Press, Portland, OR.
National English Name:	Large-flowered Brickellia
National French Name:	Brickellie à grandes fleurs
Element National ID:	233868
Element Global ID:	151399 ( <a href="#">go to NatureServe Explorer</a> )
Element Code:	PDAST1H0L0
Endemism Type:	N
Canadian COSEWIC Name:	
Canadian COSEWIC ID:	482

## Rank/Status

Global Rank:	G5 (reviewed June 02, 2015)
National Rank (Canada):	N2 (reviewed 2017)
Subnational Ranks (Canada):	AB=S2, BC=S1
National Rank (United States):	N5
Subnational Ranks (United States):	AR=S2, AZ=SNR, CA=SNR, CO=SNR, ID=SNR, KS=S2, MO=SNR, MT=SNR, NE=S2S4, NM=SNR, NV=SNR, OR=SNR, RI=SNA, TX=SNR, UT=SNR, WA=SNR, WY=S3
National Rank (Mexico):	None
Subnational Ranks (Mexico):	None
Canadian SARA Status:	None
Canadian COSEWIC Status:	Not at Risk (April 01, 1996)
US ESA Status:	None

## Range Map

Date Generated:	February 21, 2023
Version:	1.0
Stage:	Expert Reviewed (National)
Scope:	Canadian
Metadata:	Primary Species - <i>Brickellia grandiflora</i> (Hook.) Nutt. Input Records - 14 AB Element Occurrences, 17 AB Source Feature Polygons, 2 BC Non-sensitive Element Occurrences, 2 BC Vascular Plant Observations, 12 BISON, 55 GBIF, 1 iDigBio, 19 iNaturalist.ca; Expert Reviews - Ryan Batten, Varina Crisfield
Comments:	None <a href="#">Please see spatial data for Ecoshape-level reviewer comments.</a>
Disclaimer:	Please review our <a href="#">methods document</a> before using EBAR.  EBAR range data are relatively coarse scale and appropriate for screening and education purposes, but are not intended for all types of applications and analysis.  The absence of data in any geographic areas does not necessarily mean that a species is not present.  An ecoshape with a presence value does not necessarily mean that a species is present throughout the entire geographic area.
Presence Definitions:	(Please see Comments above for any exceptions)  Present - the species is found within the ecoshape based on species observation data, Element Occurrences, Source Features, Canadian Federal Critical Habitat, or expert opinion.  Presence Expected - expert opinion the species may be present, or the ecoshape overlapped with a range estimate or a habitat suitability model.  Historical - all species occurrence data within the ecoshape contains observation data greater than 40 years old or an Element Occurrence (EO) that was ranked as Extirpated or Historical (EO Rank of H, H?, X or X?).
Usage Type Definitions:	(Please see Comments above for any exceptions)  Breeding - the species is thought to breed within the ecoshape based on eBird Breeding and Behaviour Codes or expert opinion.  Possible Breeding - the species is probably or possibly breeding within the ecoshape based on eBird, BBA or jurisdiction Breeding and Behaviour Codes, or on expert opinion.
Map Projection:	North America Albers Equal Area Conic (WKID 4269)

## Credits

**Suggested Citation:**

NatureServe Canada, 2020. Ecosystem-based Automated Range (EBAR) for *Brickellia grandiflora*, Version 1.0, Expert Reviewed (National) (Canadian Scope). Ottawa, Canada. Retrieved from [insert url] on [insert date]

**License:**

Ecosystem-based Automated Range (EBAR) Project, Copyright NatureServe Canada 2022 under CC BY 4.0 ([creativecommons.org/licenses/by/4.0/](https://creativecommons.org/licenses/by/4.0/))

**Project Website:**

[www.natureserve.org/canada/ebars](http://www.natureserve.org/canada/ebars)

**Contact:**

[ebars-kba@natureserve.ca](mailto:ebars-kba@natureserve.ca)

**Input References:**

AB Element Occurrences - Alberta Conservation Information Management System, Alberta Environment and Parks, Edmonton

AB Source Feature Polygons - Alberta Conservation Information Management System, Alberta Environment and Parks, Edmonton

BC Non-sensitive Element Occurrences - British Columbia Conservation Data Centre

BC Vascular Plant Observations - British Columbia Conservation Data Centre

BISON - United States Geological Survey (<https://bison.usgs.gov/>)

GBIF - Global Biodiversity Information Facility (<https://www.gbif.org/>)

iDigBio - Integrated Digital Biocollection (<https://www.idigbio.org/>)

iNaturalist.ca - California Academy of Sciences and the National Geographic Society (<https://www.inaturalist.ca/>)

**Reviewers by Taxa:**

[Reviewers by Taxa](#)