

# *Symphyotrichum undulatum*

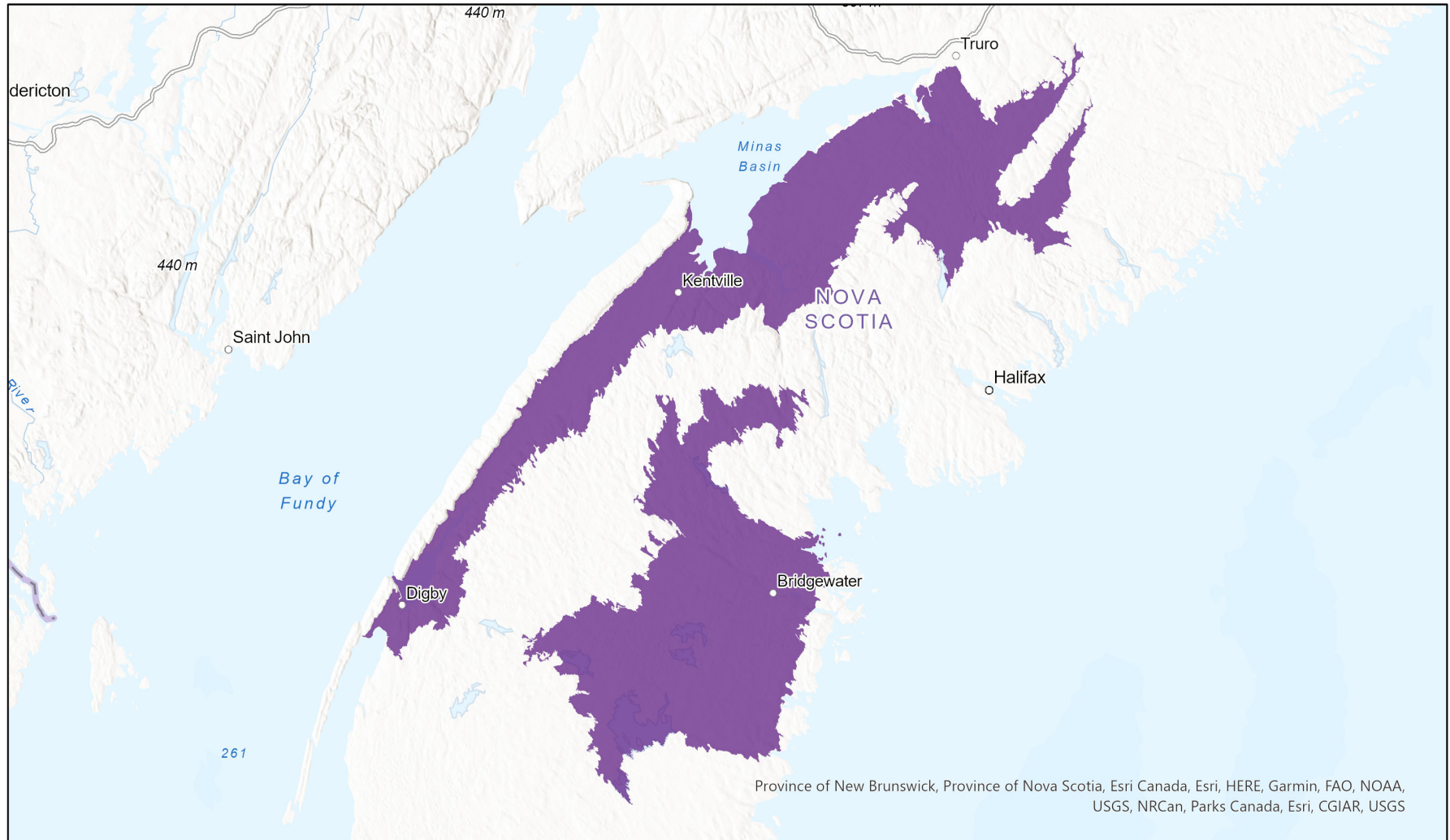


## Ecosystem-based Automated Range (EBAR)

Date Generated: January 11, 2023; Version: 1.0; Stage: Expert Reviewed (National); Scope: Canadian

Synonyms Used: None

- Present
- Presence Expected
- Historical



Province of New Brunswick, Province of Nova Scotia, Esri Canada, Esri, HERE, Garmin, FAO, NOAA, USGS, NRCAN, Parks Canada, Esri, CGIAR, USGS

0 30 60 km

Input Records - 145 ACCDC Observations, 3 BISON, 7 GBIF, 20 iNaturalist.ca; Expert Reviews - Sean Blaney

Map centre: 64.4805° W 44.7673° N  
© NatureServe Canada 2020 under CC BY 4.0

EBAR is relatively coarse scale data and not intended for all applications and analysis. Please see full disclaimer in metadata.

## Ecosystem-based Automated Range (EBAR) Metadata

---

### Species

National Scientific Name:	<i>Symphotrichum undulatum</i> (L.) Nesom
Scientific Name Reference:	Kartesz, J.T. 1999. A synonymized checklist and atlas with biological attributes for the vascular flora of the United States, Canada, and Greenland. First edition. In: Kartesz, J.T., and C.A. Meacham. Synthesis of the North American Flora, Version 1.0. North Carolina Botanical Garden, Chapel Hill, N.C.
National English Name:	Wavy-leaved Aster
National French Name:	Aster ondulé
Element National ID:	215688
Element Global ID:	147081 ( <a href="#">go to NatureServe Explorer</a> )
Element Code:	PDASTE8350
Endemism Type:	N
Canadian COSEWIC Name:	
Canadian COSEWIC ID:	

## Rank/Status

<b>Global Rank:</b>	G5 (reviewed July 25, 2016)
<b>National Rank (Canada):</b>	N2 (reviewed 2017)
<b>Subnational Ranks (Canada):</b>	NS=S3
<b>National Rank (United States):</b>	N5
<b>Subnational Ranks (United States):</b>	AL=SNR, CT=SNR, DC=SNR, DE=S4, FL=SNR, GA=SNR, IL=S1, IN=S3, KY=SNR, LA=SNR, MA=SNR, MD=SNR, ME=SNR, MI=SNR, MS=SNR, NC=S5, NH=SNR, NJ=S5, NY=S5, OH=SNR, PA=SNR, RI=SNR, SC=SNR, TN=SNR, VA=S4S5, VT=SNR, WV=S5
<b>National Rank (Mexico):</b>	None
<b>Subnational Ranks (Mexico):</b>	None
<b>Canadian SARA Status:</b>	None
<b>Canadian COSEWIC Status:</b>	None
<b>US ESA Status:</b>	None

## Range Map

**Date Generated:** January 11, 2023  
**Version:** 1.0  
**Stage:** Expert Reviewed (National)  
**Scope:** Canadian  
**Metadata:** Primary Species - *Symphytotrichum undulatum* (L.) Nesom  
Input Records - 145 ACCDC Observations, 3 BISON, 7 GBIF, 20 iNaturalist.ca; Expert Reviews - Sean Blaney

### Comments:

### Disclaimer:

Please review our [methods document](#) before using EBAR.

EBAR range data are relatively coarse scale and appropriate for screening and education purposes, but are not intended for all types of applications and analysis.

The absence of data in any geographic areas does not necessarily mean that a species is not present.

An ecoshape with a presence value does not necessarily mean that a species is present throughout the entire geographic area.

### Presence Definitions:

(Please see Comments above for any exceptions)

Present - the species is found within the ecoshape based on species observation data, Element Occurrences, Source Features, Canadian Federal Critical Habitat, or expert opinion.

Presence Expected - expert opinion the species may be present, or the ecoshape overlapped with a range estimate or a habitat suitability model.

Historical - all species occurrence data within the ecoshape contains observation data greater than 40 years old or an Element Occurrence (EO) that was ranked as Extirpated or Historical (EO Rank of H, H?, X or X?).

### Usage Type Definitions:

(Please see Comments above for any exceptions)

Breeding - the species is thought to breed within the ecoshape based on eBird Breeding and Behaviour Codes or expert opinion.

Possible Breeding - the species is probably or possibly breeding within the ecoshape based on eBird, BBA or jurisdiction Breeding and Behaviour Codes, or on expert opinion.

Migration - the species is thought to migrate within the ecoshape based on eBird Breeding and Behaviour Codes or expert opinion.

### Map Projection:

North America Albers Equal Area Conic (WKID 4269)

## Credits

<b>Suggested Citation:</b>	NatureServe Canada, 2020. Ecosystem-based Automated Range (EBAR) for <i>Symphyotrichum undulatum</i> , Version 1.0, Expert Reviewed (National) (Canadian Scope). Ottawa, Canada. Retrieved from [insert url] on [insert date]
<b>License:</b>	Ecosystem-based Automated Range (EBAR) Project, Copyright NatureServe Canada 2022 under CC BY 4.0 ( <a href="https://creativecommons.org/licenses/by/4.0/">creativecommons.org/licenses/by/4.0/</a> )
<b>Project Website:</b>	<a href="http://www.natureserve.org/canada/ebar">www.natureserve.org/canada/ebar</a>
<b>Contact:</b>	<a href="mailto:ebar-kba@natureserve.ca">ebar-kba@natureserve.ca</a>
<b>Input References:</b>	ACCDC Observations - Atlantic Canada Conservation Data Centre BISON - United States Geological Survey ( <a href="https://bison.usgs.gov/">https://bison.usgs.gov/</a> ) GBIF - Global Biodiversity Information Facility ( <a href="https://www.gbif.org">https://www.gbif.org</a> ) iNaturalist.ca - California Academy of Sciences and the National Geographic Society ( <a href="https://www.inaturalist.ca/">https://www.inaturalist.ca/</a> )
<b>Reviewers by Taxa:</b>	<a href="#">Reviewers by Taxa</a>