

# Carex sabulosa

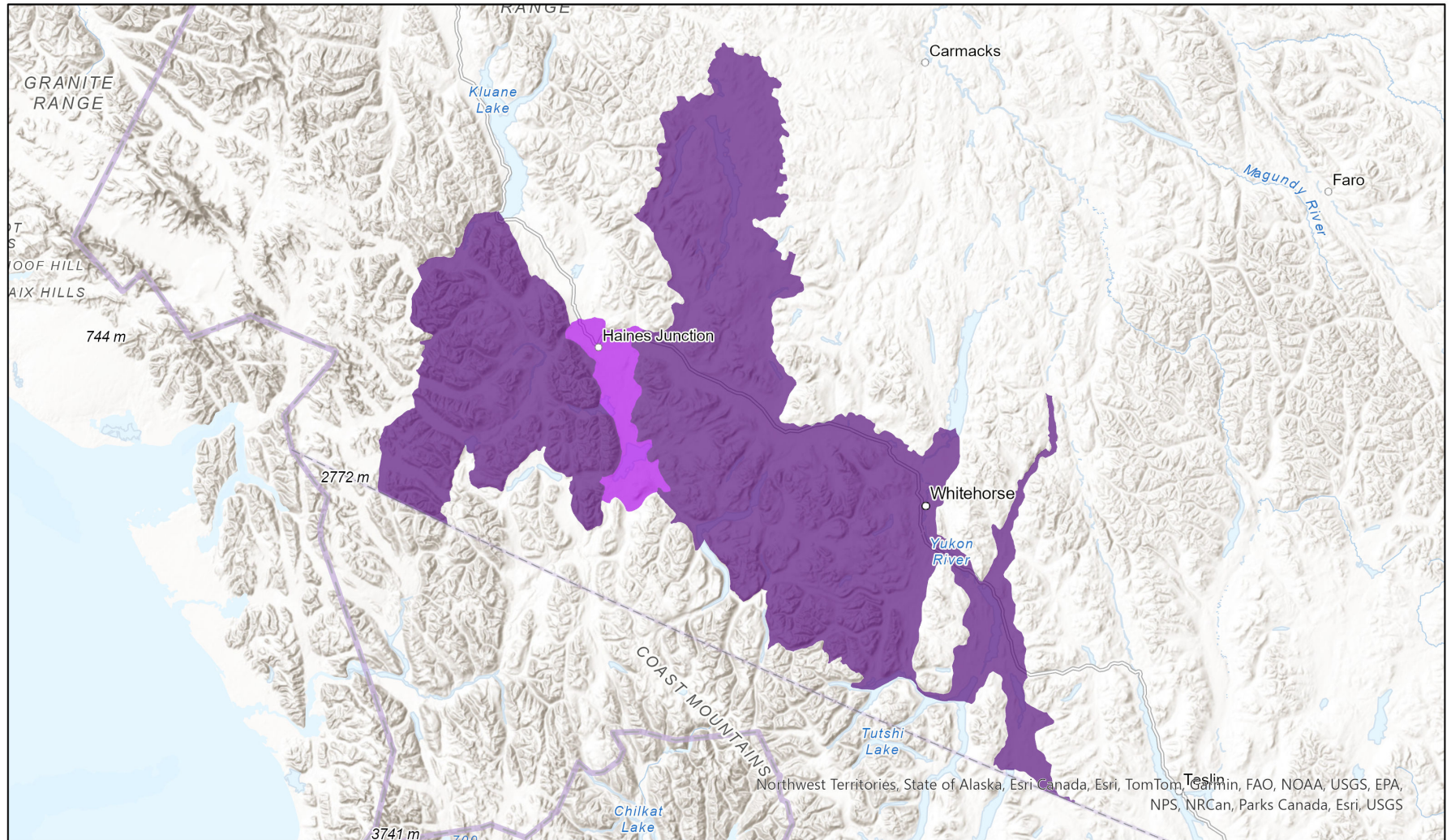


- Present
- Presence Expected
- Historical

## Ecosystem-based Automated Range (EBAR)

Date Generated: March 20, 2024; Version: 1.0; Stage: Expert Reviewed (National); Scope: Canadian

Synonyms Used: Carex leiophylla



0 40 80 km

Input Records - 38 BISON, 210 GBIF, 5 iDigBio, 199 iNaturalist.ca, 15 iNaturalist.org, 19 YT Element Occurrences, 36 YT Source Feature Points, 199 YT Source Feature Polygons; Expert Reviews - Syd Cannings, 1 Anonymous

Map centre: 136.5107°W 60.7021°N  
© NatureServe Canada 2020 under CC BY 4.0

EBAR is relatively coarse scale data and not intended for all applications and analysis. Please see full disclaimer in metadata.

## Ecosystem-based Automated Range (EBAR) Metadata

---

### Species

National Scientific Name:	<i>Carex sabulosa</i> Turcz. ex Kunth
Scientific Name Reference:	Flora of North America Editorial Committee. 2002b. Flora of North America north of Mexico. Vol. 23. Magnoliophyta: Commelinidae (in part): Cyperaceae. Oxford Univ. Press, New York. xxiv + 608 pp.
National English Name:	Baikal Sedge
National French Name:	Carex des sables
Element National ID:	221267
Element Global ID:	146762 ( <a href="#">go to NatureServe Explorer</a> )
Element Code:	PMCYP03BW0
Endemism Type:	N
Canadian COSEWIC Name:	
Canadian COSEWIC ID:	843

## Rank/Status

<b>Global Rank:</b>	G5 (reviewed August 08, 1991)
<b>National Rank (Canada):</b>	N3 (reviewed 2023)
<b>Subnational Ranks (Canada):</b>	YT=S3
<b>National Rank (United States):</b>	NNR
<b>Subnational Ranks (United States):</b>	AK=S1
<b>National Rank (Mexico):</b>	None
<b>Subnational Ranks (Mexico):</b>	None
<b>Canadian SARA Status:</b>	Special Concern/Préoccupante (August 15, 2006)
<b>Canadian COSEWIC Status:</b>	Special Concern (April 29, 2016)
<b>US ESA Status:</b>	None

## Range Map

<b>Date Generated:</b>	March 20, 2024
<b>Version:</b>	1.0
<b>Stage:</b>	Expert Reviewed (National)
<b>Scope:</b>	Canadian
<b>Metadata:</b>	Primary Species - <i>Carex sabulosa</i> Turcz. ex Kunth; Synonyms - <i>Carex leiophylla</i> Mackenzie Input Records - 38 BISON, 210 GBIF, 5 iDigBio, 199 iNaturalist.ca, 15 iNaturalist.org, 19 YT Element Occurrences, 36 YT Source Feature Points, 199 YT Source Feature Polygons; Expert Reviews - Syd Cannings, 1 Anonymous
<b>Comments:</b>	None <a href="#">Please see spatial data for Ecoshape-level reviewer comments.</a>
<b>Disclaimer:</b>	Please review our <a href="#">methods document</a> before using EBAR.  EBAR range data are relatively coarse scale and appropriate for screening and education purposes, but are not intended for all types of applications and analysis.  The absence of data in any geographic areas does not necessarily mean that a species is not present.  An ecoshape with a presence value does not necessarily mean that a species is present throughout the entire geographic area.
<b>Presence Definitions:</b>	(Please see Comments above for any exceptions)  Present - the species is found within the ecoshape based on species observation data, Element Occurrences, Source Features, Canadian Federal Critical Habitat, or expert opinion.  Presence Expected - expert opinion the species may be present, or the ecoshape overlapped with a range estimate or a habitat suitability model.  Historical - all species occurrence data within the ecoshape contains observation data greater than 40 years old or an Element Occurrence (EO) that was ranked as Extirpated or Historical (EO Rank of H, H?, X or X?).
<b>Usage Type Definitions:</b>	(Please see Comments above for any exceptions)  Breeding - the species is thought to breed within the ecoshape based on eBird Breeding and Behaviour Codes or expert opinion.  Possible Breeding - the species is probably or possibly breeding within the ecoshape based on eBird, BBA or jurisdiction Breeding and Behaviour Codes, or on expert opinion.
<b>Map Projection:</b>	North America Albers Equal Area Conic (WKID 4269)

## Credits

<b>Suggested Citation:</b>	NatureServe Canada, 2020. Ecosystem-based Automated Range (EBAR) for <i>Carex sabulosa</i> , Version 1.0, Expert Reviewed (National) (Canadian Scope). Ottawa, Canada. Retrieved from [insert url] on [insert date]
<b>License:</b>	Ecosystem-based Automated Range (EBAR) Project, Copyright NatureServe Canada 2022 under CC BY 4.0 ( <a href="https://creativecommons.org/licenses/by/4.0/">creativecommons.org/licenses/by/4.0/</a> )
<b>Project Website:</b>	<a href="http://www.natureserve.org/canada/ebar">www.natureserve.org/canada/ebar</a>
<b>Contact:</b>	<a href="mailto:ebar-kba@natureserve.ca">ebar-kba@natureserve.ca</a>
<b>Input References:</b>	BISON - <a href="#">United States Geological Survey</a> GBIF - <a href="#">Global Biodiversity Information Facility</a> iDigBio - <a href="#">Integrated Digital Biocollection</a> iNaturalist.ca - <a href="#">California Academy of Sciences and the National Geographic Society</a> iNaturalist.org - <a href="#">California Academy of Sciences and the National Geographic Society</a> YT Element Occurrences - Yukon Conservation Data Centre YT Source Feature Points - Yukon Conservation Data Centre YT Source Feature Polygons - Yukon Conservation Data Centre
<b>Reviewers by Taxa:</b>	<a href="#">Reviewers by Taxa</a>