

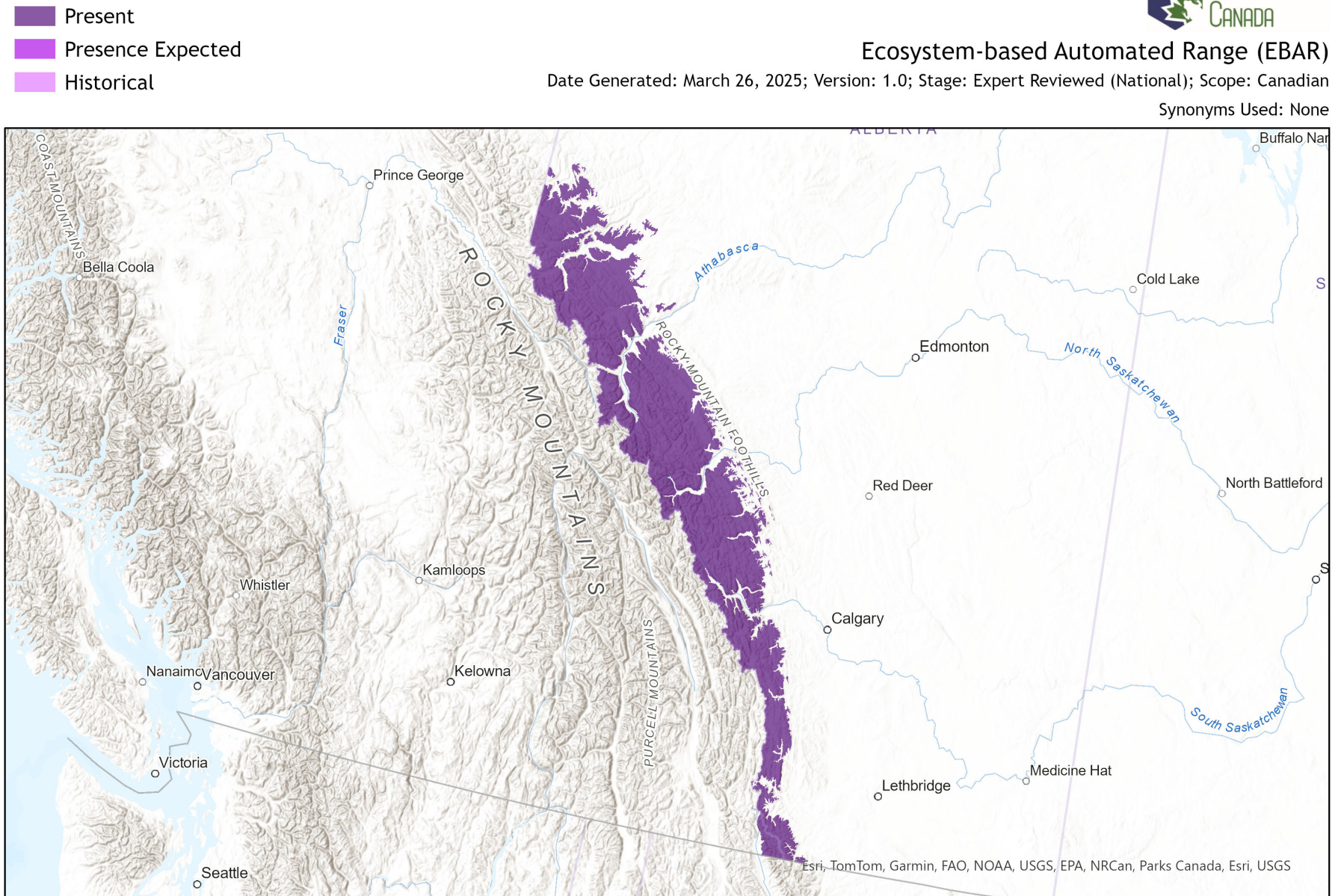
Papaver pygmaeum



Ecosystem-based Automated Range (EBAR)

Date Generated: March 26, 2025; Version: 1.0; Stage: Expert Reviewed (National); Scope: Canadian

Synonyms Used: None



0 120 240 km Input Records - 21 AB Element Occurrences, 19 AB Source Feature Polygons, 4 BC Non-sensitive Element Occurrences, 6 BC Vascular Plant Observations, 1 BISON, 18 GBIF, 29 iNaturalist.ca, 1 iNaturalist.ca (original coordinates for obscured records); Expert Reviews - Ryan Batten, Varina Crisfield

Map centre: 116.8578°W 51.7587°N
© NatureServe Canada 2020 under CC BY 4.0

EBAR is relatively coarse scale data and not intended for all applications and analysis. Please see full disclaimer in metadata.

Ecosystem-based Automated Range (EBAR) Metadata

Species

National Scientific Name:	<i>Papaver pygmaeum</i> Rydb.
Scientific Name Reference:	Flora of North America Editorial Committee (FNA). 1997. Flora of North America north of Mexico. Vol. 3. Magnoliophyta: Magnoliidae and Hamamelidae. Oxford Univ. Press, New York. xxiii + 590 pp.
National English Name:	Dwarf Alpine Poppy
National French Name:	Pavot nain
Element National ID:	202452
Element Global ID:	144323 (go to NatureServe Explorer)
Element Code:	PDPAP0H0G0
Endemism Type:	N
Canadian COSEWIC Name:	
Canadian COSEWIC ID:	

Rank/Status

Global Rank:	G3 (reviewed March 30, 2020)
National Rank (Canada):	N2? (reviewed 2023)
Subnational Ranks (Canada):	AB=S1, BC=S2?
National Rank (United States):	N3
Subnational Ranks (United States):	MT=S2S3
National Rank (Mexico):	None
Subnational Ranks (Mexico):	None
Canadian SARA Status:	None
Canadian COSEWIC Status:	None
US ESA Status:	None

Range Map

Date Generated:	March 26, 2025
Version:	1.0
Stage:	Expert Reviewed (National)
Scope:	Canadian
Metadata:	<p>Primary Species - <i>Papaver pygmaeum</i> Rydb.</p> <p>Input Records - 21 AB Element Occurrences, 19 AB Source Feature Polygons, 4 BC Non-sensitive Element Occurrences, 6 BC Vascular Plant Observations, 1 BISON, 18 GBIF, 29 iNaturalist.ca, 1 iNaturalist.ca (original coordinates for obscured records); Expert Reviews - Ryan Batten, Varina Crisfield</p>
Comments:	<p>None</p> <p>Please see spatial data for Ecoshape-level reviewer comments.</p>
Disclaimer:	<p>Please review our methods document before using EBAR.</p> <p>EBAR range data are relatively coarse scale and appropriate for screening and education purposes, but are not intended for all types of applications and analysis.</p> <p>The absence of data in any geographic areas does not necessarily mean that a species is not present.</p> <p>An ecoshape with a presence value does not necessarily mean that a species is present throughout the entire geographic area.</p>
Presence Definitions:	<p>(Please see Comments above for any exceptions)</p> <p>Present - the species is found within the ecoshape based on species observation data, Element Occurrences, Source Features, Canadian Federal Critical Habitat, or expert opinion.</p> <p>Presence Expected - expert opinion the species may be present, or the ecoshape overlapped with a range estimate or a habitat suitability model.</p> <p>Historical - all species occurrence data within the ecoshape contains observation data greater than 40 years old or an Element Occurrence (EO) that was ranked as Extirpated or Historical (EO Rank of H, H?, X or X?), or expert opinion that the species is extirpated or historical.</p>
Usage Type Definitions:	<p>(Please see Comments above for any exceptions)</p> <p>Breeding - the species is thought to breed within the ecoshape based on eBird Breeding and Behaviour Codes or expert opinion.</p> <p>Possible Breeding - the species is probably or possibly breeding within the ecoshape based on eBird, BBA or jurisdiction Breeding and Behaviour Codes, or on expert opinion.</p>
Map Projection:	North America Albers Equal Area Conic (WKID 4269)

Credits

Suggested Citation:

NatureServe Canada, 2020. Ecosystem-based Automated Range (EBAR) for *Papaver pygmaeum*, Version 1.0, Expert Reviewed (National) (Canadian Scope). Ottawa, Canada. Retrieved from [insert url] on [insert date]

License:

Ecosystem-based Automated Range (EBAR) Project, Copyright NatureServe Canada 2024 under CC BY 4.0 (creativecommons.org/licenses/by/4.0/)

Project Website:

www.natureserve.org/canada/ebars

Contact:

ebars-kba@natureserve.ca

Input References:

AB Element Occurrences - Alberta Conservation Information Management System, Alberta Environment and Parks, Edmonton

AB Source Feature Polygons - Alberta Conservation Information Management System, Alberta Environment and Parks, Edmonton

BC Non-sensitive Element Occurrences - British Columbia Conservation Data Centre

BC Vascular Plant Observations - British Columbia Conservation Data Centre

BISON - [United States Geological Survey](#)

GBIF - [Global Biodiversity Information Facility](#)

GBIF - GBIF Occurrence Download <https://doi.org/10.15468/dl.e3ax32> Accessed from R via rgbif (<https://github.com/ropensci/rgbif>) on 2024-06-21

GBIF - [GBIF.org](#) (29 June 2023) GBIF Occurrence Download <https://doi.org/10.15468/dl.ync22y>

iNaturalist.ca - [California Academy of Sciences and the National Geographic Society](#)

iNaturalist.ca (original coordinates for obscured records) - [California Academy of Sciences and the National Geographic Society](#)

Reviewers by Taxa:

[Reviewers by Taxa](#)