

# Carex paysonis

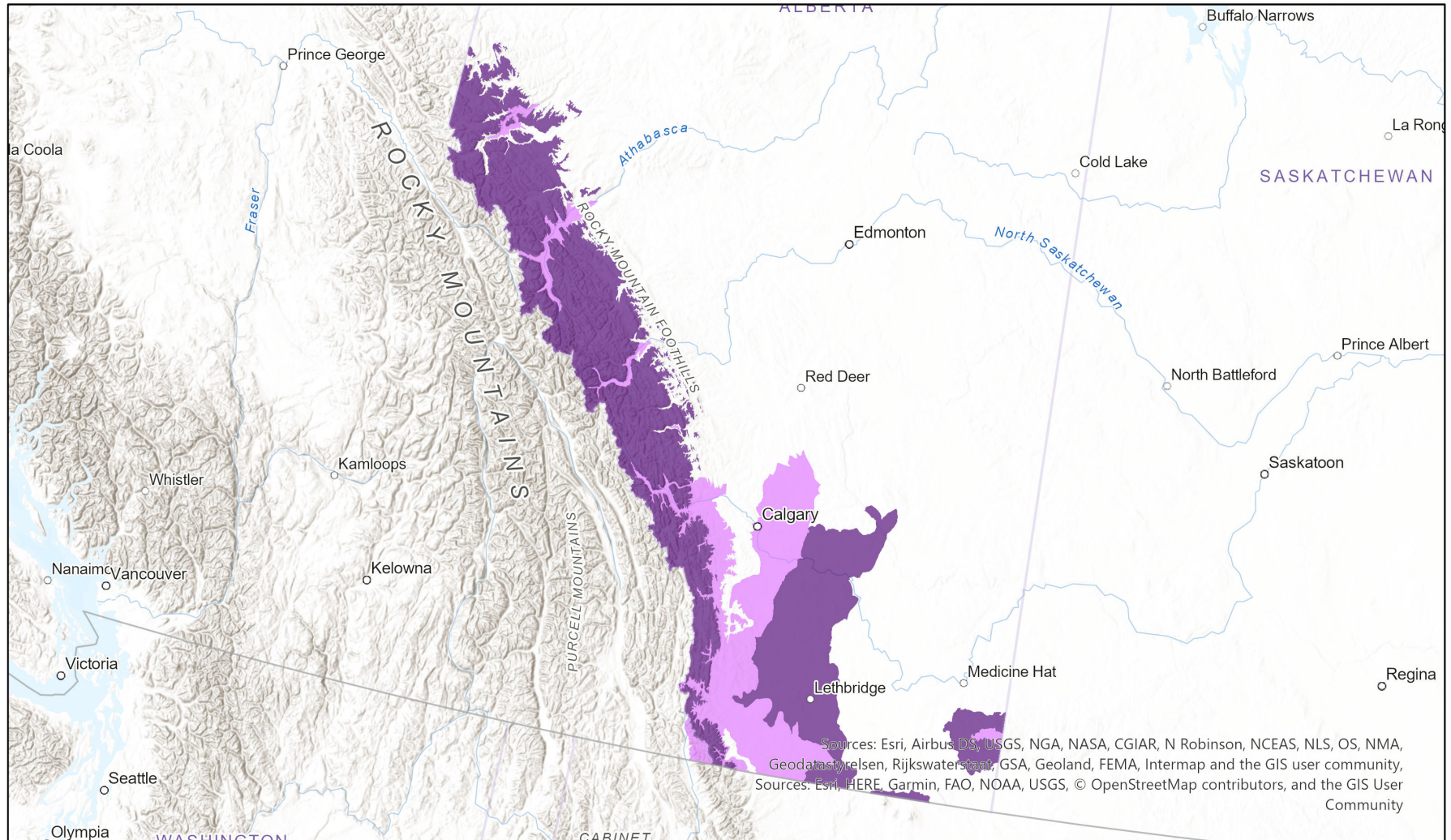


## Ecosystem-based Automated Range (EBAR)

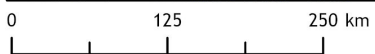
- Present
- Presence Expected
- Historical

Date Generated: April 12, 2023; Version: 1.0; Stage: Expert Reviewed (National); Scope: Canadian

Synonyms Used: None



Sources: Esri, Airbus DS, USGS, NGA, NASA, CGIAR, N Robinson, NCEAS, NLS, OS, NMA, Geodatastyrelsen, Rijkswaterstaat, GSA, Geoland, FEMA, Intermap and the GIS user community, Sources: Esri, HERE, Garmin, FAO, NOAA, USGS, © OpenStreetMap contributors, and the GIS User Community



Input Records - 22 AB Element Occurrences, 24 AB Source Feature Polygons, 5 BC Non-sensitive Element Occurrences, 2 BC Vascular Plant Observations, 3 BISON, 21 GBIF; Expert Reviews - Ryan Batten, Varina Crisfield

Map centre: 114.8207° W 51.8566° N  
 © NatureServe Canada 2020 under CC BY 4.0

EBAR is relatively coarse scale data and not intended for all applications and analysis. Please see full disclaimer in metadata.

## Ecosystem-based Automated Range (EBAR) Metadata

---

### Species

National Scientific Name:	<i>Carex paysonis</i> Clokey
Scientific Name Reference:	Kartesz, J.T. 1994. A synonymized checklist of the vascular flora of the United States, Canada, and Greenland. 2nd edition. 2 vols. Timber Press, Portland, OR.
National English Name:	Payson's Sedge
National French Name:	Carex de Payson
Element National ID:	196482
Element Global ID:	144240 ( <a href="#">go to NatureServe Explorer</a> )
Element Code:	PMCYP03A80
Endemism Type:	N
Canadian COSEWIC Name:	
Canadian COSEWIC ID:	

## Rank/Status

<b>Global Rank:</b>	G4G5 (reviewed August 25, 2016)
<b>National Rank (Canada):</b>	N2N3 (reviewed 2016)
<b>Subnational Ranks (Canada):</b>	AB=S2, BC=SH
<b>National Rank (United States):</b>	N4N5 (reviewed 2012)
<b>Subnational Ranks (United States):</b>	ID=SNR, MT=S4S5, NV=SNR, OR=SNR, UT=S2, WA=SNR, WY=S3
<b>National Rank (Mexico):</b>	None
<b>Subnational Ranks (Mexico):</b>	None
<b>Canadian SARA Status:</b>	None
<b>Canadian COSEWIC Status:</b>	None
<b>US ESA Status:</b>	None

## Range Map

<b>Date Generated:</b>	April 12, 2023
<b>Version:</b>	1.0
<b>Stage:</b>	Expert Reviewed (National)
<b>Scope:</b>	Canadian
<b>Metadata:</b>	Primary Species - <i>Carex paysonis</i> Clokey Input Records - 22 AB Element Occurrences, 24 AB Source Feature Polygons, 5 BC Non-sensitive Element Occurrences, 2 BC Vascular Plant Observations, 3 BISON, 21 GBIF; Expert Reviews - Ryan Batten, Varina Crisfield
<b>Comments:</b>	None <a href="#">Please see spatial data for Ecoshape-level reviewer comments.</a>
<b>Disclaimer:</b>	Please review our <a href="#">methods document</a> before using EBAR.  EBAR range data are relatively coarse scale and appropriate for screening and education purposes, but are not intended for all types of applications and analysis.  The absence of data in any geographic areas does not necessarily mean that a species is not present.  An ecoshape with a presence value does not necessarily mean that a species is present throughout the entire geographic area.
<b>Presence Definitions:</b>	(Please see Comments above for any exceptions)  Present - the species is found within the ecoshape based on species observation data, Element Occurrences, Source Features, Canadian Federal Critical Habitat, or expert opinion.  Presence Expected - expert opinion the species may be present, or the ecoshape overlapped with a range estimate or a habitat suitability model.  Historical - all species occurrence data within the ecoshape contains observation data greater than 40 years old or an Element Occurrence (EO) that was ranked as Extirpated or Historical (EO Rank of H, H?, X or X?).
<b>Usage Type Definitions:</b>	(Please see Comments above for any exceptions)  Breeding - the species is thought to breed within the ecoshape based on eBird Breeding and Behaviour Codes or expert opinion.  Possible Breeding - the species is probably or possibly breeding within the ecoshape based on eBird, BBA or jurisdiction Breeding and Behaviour Codes, or on expert opinion.
<b>Map Projection:</b>	North America Albers Equal Area Conic (WKID 4269)

## Credits

<b>Suggested Citation:</b>	NatureServe Canada, 2020. Ecosystem-based Automated Range (EBAR) for Carex paysonis, Version 1.0, Expert Reviewed (National) (Canadian Scope). Ottawa, Canada. Retrieved from [insert url] on [insert date]
<b>License:</b>	Ecosystem-based Automated Range (EBAR) Project, Copyright NatureServe Canada 2022 under CC BY 4.0 ( <a href="https://creativecommons.org/licenses/by/4.0/">creativecommons.org/licenses/by/4.0/</a> )
<b>Project Website:</b>	<a href="http://www.natureserve.org/canada/ebar">www.natureserve.org/canada/ebar</a>
<b>Contact:</b>	<a href="mailto:ebar-kba@natureserve.ca">ebar-kba@natureserve.ca</a>
<b>Input References:</b>	AB Element Occurrences - Alberta Conservation Information Management System, Alberta Environment and Parks, Edmonton AB Source Feature Polygons - Alberta Conservation Information Management System, Alberta Environment and Parks, Edmonton BC Non-sensitive Element Occurrences - British Columbia Conservation Data Centre BC Vascular Plant Observations - British Columbia Conservation Data Centre BISON - United States Geological Survey ( <a href="https://bison.usgs.gov/">https://bison.usgs.gov/</a> ) GBIF - Global Biodiversity Information Facility ( <a href="https://www.gbif.org">https://www.gbif.org</a> )
<b>Reviewers by Taxa:</b>	<a href="#">Reviewers by Taxa</a>