

# *Linum striatum*

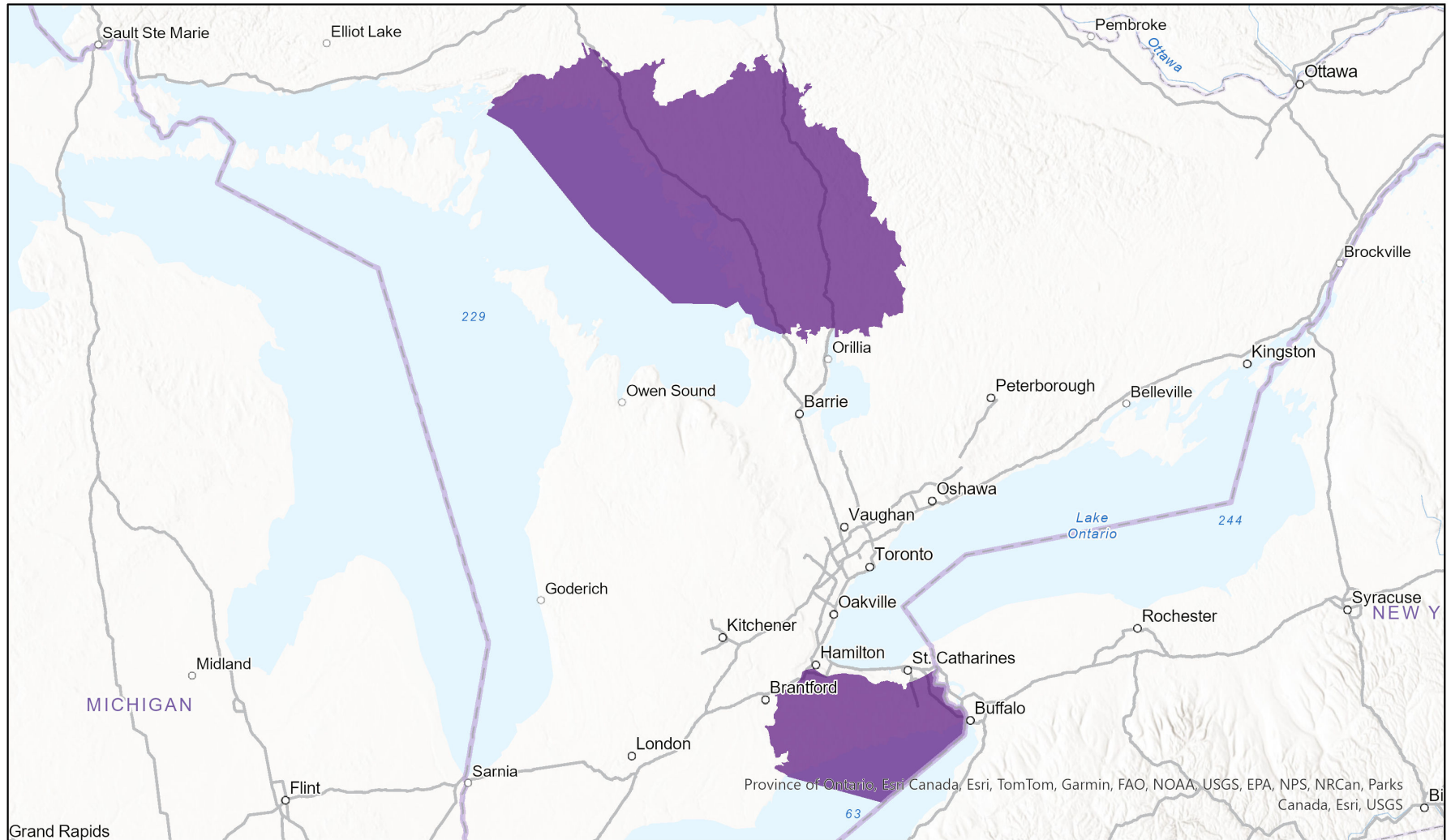


## Ecosystem-based Automated Range (EBAR)

- Present
- Presence Expected
- Historical

Date Generated: May 23, 2024; Version: 1.0; Stage: Expert Reviewed (National); Scope: Canadian

Synonyms Used: None



0 60 120 km Input Records - 3 BISON, 28 GBIF, 21 iNaturalist.ca, 6 iNaturalist.ca (original coordinates for obscured records), 1 iNaturalist.org, 5 ON Element Occurrences, 49 ON Observations and Source Features; Expert Reviews - Wasyl Bakowsky

Map centre: 80.2116° W 44.4058° N  
© NatureServe Canada 2020 under CC BY 4.0

EBAR is relatively coarse scale data and not intended for all applications and analysis. Please see full disclaimer in metadata.

## Ecosystem-based Automated Range (EBAR) Metadata

---

### Species

National Scientific Name:	<i>Linum striatum</i> Walt.
Scientific Name Reference:	Kartesz, J.T. 1994. A synonymized checklist of the vascular flora of the United States, Canada, and Greenland. 2nd edition. 2 vols. Timber Press, Portland, OR.
National English Name:	Ridged Yellow Flax
National French Name:	Lin à tige striée
Element National ID:	211564
Element Global ID:	144056 ( <a href="#">go to NatureServe Explorer</a> )
Element Code:	PDLIN020T0
Endemism Type:	N
Canadian COSEWIC Name:	
Canadian COSEWIC ID:	

## Rank/Status

<b>Global Rank:</b>	G5 (reviewed June 16, 2015)
<b>National Rank (Canada):</b>	N1 (reviewed 2022)
<b>Subnational Ranks (Canada):</b>	ON=S1
<b>National Rank (United States):</b>	N5
<b>Subnational Ranks (United States):</b>	AL=SNR, AR=SNR, CT=SNR, DC=SNR, DE=S4, FL=SNR, GA=SNR, IL=SNR, IN=S3, KY=S4, LA=SNR, MA=S2S3, MD=SNR, MI=SNR, MO=SNR, MS=SNR, NC=S5, NJ=S4, NY=S3, OH=SNR, OK=SNR, PA=S5, RI=SNR, SC=S5, TN=SNR, TX=SNR, VA=S5, VT=SU, WV=S5
<b>National Rank (Mexico):</b>	None
<b>Subnational Ranks (Mexico):</b>	None
<b>Canadian SARA Status:</b>	None
<b>Canadian COSEWIC Status:</b>	None
<b>US ESA Status:</b>	None

## Range Map

<b>Date Generated:</b>	May 23, 2024
<b>Version:</b>	1.0
<b>Stage:</b>	Expert Reviewed (National)
<b>Scope:</b>	Canadian
<b>Metadata:</b>	Primary Species - <i>Linum striatum</i> Walt. Input Records - 3 BISON, 28 GBIF, 21 iNaturalist.ca, 6 iNaturalist.ca (original coordinates for obscured records), 1 iNaturalist.org, 5 ON Element Occurrences, 49 ON Observations and Source Features; Expert Reviews - Wasył Bakowsky
<b>Comments:</b>	None <a href="#">Please see spatial data for Ecoshape-level reviewer comments.</a>
<b>Disclaimer:</b>	Please review our <a href="#">methods document</a> before using EBAR.  EBAR range data are relatively coarse scale and appropriate for screening and education purposes, but are not intended for all types of applications and analysis.  The absence of data in any geographic areas does not necessarily mean that a species is not present.  An ecoshape with a presence value does not necessarily mean that a species is present throughout the entire geographic area.
<b>Presence Definitions:</b>	(Please see Comments above for any exceptions)  Present - the species is found within the ecoshape based on species observation data, Element Occurrences, Source Features, Canadian Federal Critical Habitat, or expert opinion.  Presence Expected - expert opinion the species may be present, or the ecoshape overlapped with a range estimate or a habitat suitability model.  Historical - all species occurrence data within the ecoshape contains observation data greater than 40 years old or an Element Occurrence (EO) that was ranked as Extirpated or Historical (EO Rank of H, H?, X or X?), or expert opinion that the species is extirpated or historical.
<b>Usage Type Definitions:</b>	(Please see Comments above for any exceptions)  Breeding - the species is thought to breed within the ecoshape based on eBird Breeding and Behaviour Codes or expert opinion.  Possible Breeding - the species is probably or possibly breeding within the ecoshape based on eBird, BBA or jurisdiction Breeding and Behaviour Codes, or on expert opinion.
<b>Map Projection:</b>	North America Albers Equal Area Conic (WKID 4269)

## Credits

<b>Suggested Citation:</b>	NatureServe Canada, 2020. Ecosystem-based Automated Range (EBAR) for <i>Linum striatum</i> , Version 1.0, Expert Reviewed (National) (Canadian Scope). Ottawa, Canada. Retrieved from [insert url] on [insert date]
<b>License:</b>	Ecosystem-based Automated Range (EBAR) Project, Copyright NatureServe Canada 2022 under CC BY 4.0 ( <a href="https://creativecommons.org/licenses/by/4.0/">creativecommons.org/licenses/by/4.0/</a> )
<b>Project Website:</b>	<a href="http://www.natureserve.org/canada/ebar">www.natureserve.org/canada/ebar</a>
<b>Contact:</b>	<a href="mailto:ebar-kba@natureserve.ca">ebar-kba@natureserve.ca</a>
<b>Input References:</b>	BISON - <a href="#">United States Geological Survey</a> GBIF - <a href="#">Global Biodiversity Information Facility</a> iNaturalist.ca - <a href="#">California Academy of Sciences and the National Geographic Society</a> iNaturalist.ca (original coordinates for obscured records) - <a href="#">California Academy of Sciences and the National Geographic Society</a> iNaturalist.org - <a href="#">California Academy of Sciences and the National Geographic Society</a> ON Element Occurrences - Natural Heritage Information Centre, Ontario Ministry of Natural Resources and Forestry ON Observations and Source Features - Natural Heritage Information Centre, Ontario Ministry of Natural Resources and Forestry
<b>Reviewers by Taxa:</b>	<a href="#">Reviewers by Taxa</a>