

Solidago pallida

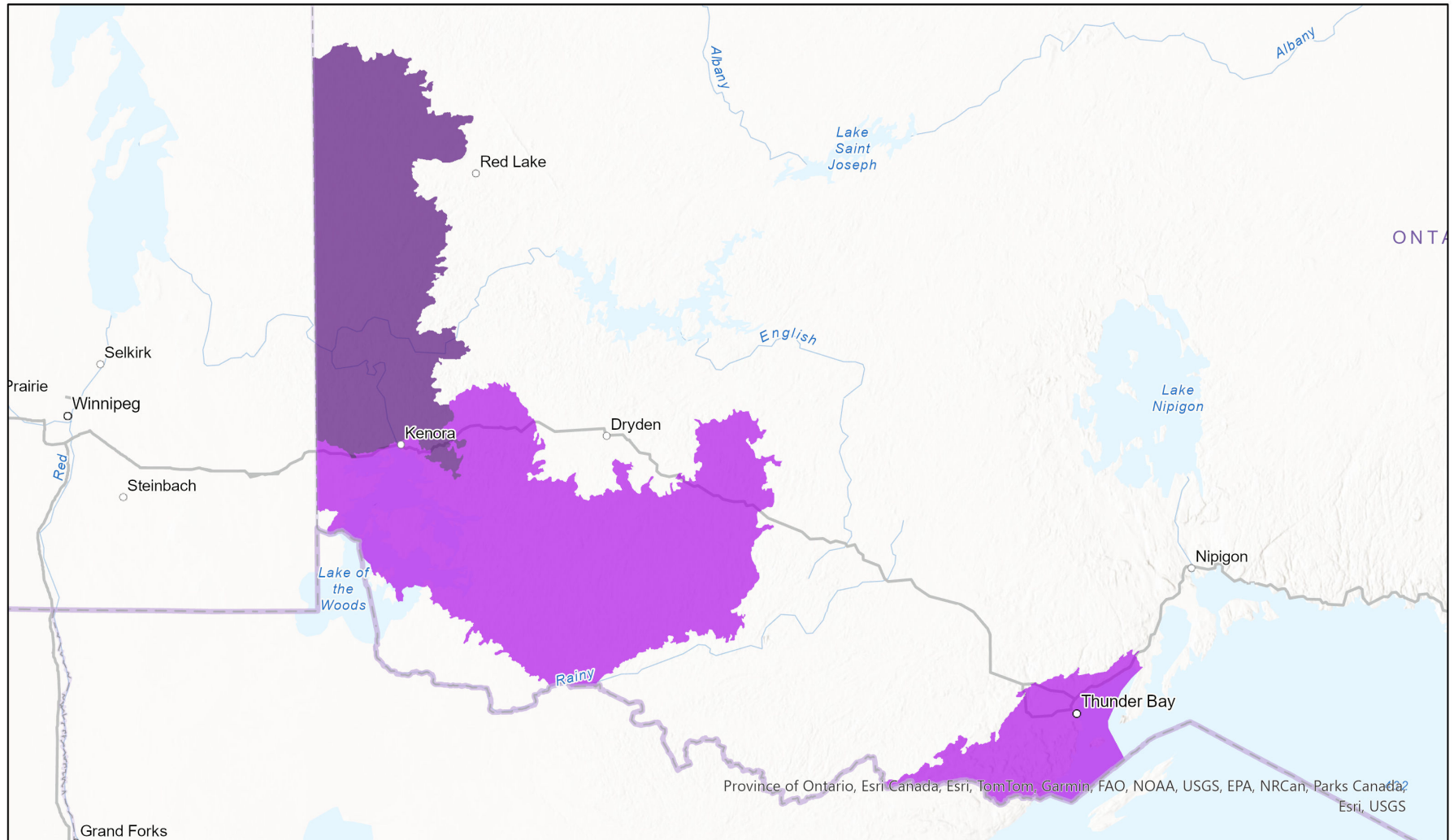


Ecosystem-based Automated Range (EBAR)

- Present
- Presence Expected
- Historical

Date Generated: January 11, 2023; Version: 1.0; Stage: Expert Reviewed (National); Scope: Canadian

Synonyms Used: None



Province of Ontario, Esri Canada, Esri, TomTom, Garmin, FAO, NOAA, USGS, EPA, NRCan, Parks Canada, Esri, USGS

Input Records - 6 BISON, 17 GBIF, 11 iNaturalist.ca, 1 ON Element Occurrences, 76 ON Observations and Source Features; Expert Reviews - Patrick Deacon

Map centre: 91.8617° W 49.8175° N
© NatureServe Canada 2020 under CC BY 4.0

EBAR is relatively coarse scale data and not intended for all applications and analysis. Please see full disclaimer in metadata.

Ecosystem-based Automated Range (EBAR) Metadata

Species

National Scientific Name:	<i>Solidago pallida</i> (Porter) Rydb.
Scientific Name Reference:	Semple, J.C., L. Tong, M.J. Oldham and W.D. Bakowsky. 2012. <i>Solidago pallida</i> (Asteraceae: Astereae) New to Ontario and Canada. Phytoneuron 106:1-5.
National English Name:	Pale Showy Goldenrod
National French Name:	Verge d'or pâle; Verge d'or voyante - Population boréale
Element National ID:	192661
Element Global ID:	143276 (go to NatureServe Explorer)
Element Code:	PDAST8P1X5
Endemism Type:	N
Canadian COSEWIC Name:	<i>Solidago speciosa</i> pop. 2
Canadian COSEWIC ID:	1114

Rank/Status

Global Rank:	G5T4 (reviewed April 10, 1998)
National Rank (Canada):	N1 (reviewed 2022)
Subnational Ranks (Canada):	ON=S1
National Rank (United States):	N4
Subnational Ranks (United States):	CO=SNR, NE=S1, NM=SNR, OK=SNR, SD=SNR, WY=S2
National Rank (Mexico):	None
Subnational Ranks (Mexico):	None
Canadian SARA Status:	Threatened/Menacée (June 05, 2003)
Canadian COSEWIC Status:	Threatened (November 26, 2010)
US ESA Status:	None

Range Map

Date Generated:	January 11, 2023
Version:	1.0
Stage:	Expert Reviewed (National)
Scope:	Canadian
Metadata:	Primary Species - <i>Solidago pallida</i> (Porter) Rydb. Input Records - 6 BISON, 17 GBIF, 11 iNaturalist.ca, 1 ON Element Occurrences, 76 ON Observations and Source Features; Expert Reviews - Patrick Deacon
Comments:	None Please see spatial data for Ecoshape-level reviewer comments.
Disclaimer:	Please review our methods document before using EBAR. EBAR range data are relatively coarse scale and appropriate for screening and education purposes, but are not intended for all types of applications and analysis. The absence of data in any geographic areas does not necessarily mean that a species is not present. An ecoshape with a presence value does not necessarily mean that a species is present throughout the entire geographic area.
Presence Definitions:	(Please see Comments above for any exceptions) Present - the species is found within the ecoshape based on species observation data, Element Occurrences, Source Features, Canadian Federal Critical Habitat, or expert opinion. Presence Expected - expert opinion the species may be present, or the ecoshape overlapped with a range estimate or a habitat suitability model. Historical - all species occurrence data within the ecoshape contains observation data greater than 40 years old or an Element Occurrence (EO) that was ranked as Extirpated or Historical (EO Rank of H, H?, X or X?).
Usage Type Definitions:	(Please see Comments above for any exceptions) Breeding - the species is thought to breed within the ecoshape based on eBird Breeding and Behaviour Codes or expert opinion. Possible Breeding - the species is probably or possibly breeding within the ecoshape based on eBird, BBA or jurisdiction Breeding and Behaviour Codes, or on expert opinion.
Map Projection:	North America Albers Equal Area Conic (WKID 4269)

Credits

Suggested Citation:	NatureServe Canada, 2020. Ecosystem-based Automated Range (EBAR) for <i>Solidago pallida</i> , Version 1.0, Expert Reviewed (National) (Canadian Scope). Ottawa, Canada. Retrieved from [insert url] on [insert date]
License:	Ecosystem-based Automated Range (EBAR) Project, Copyright NatureServe Canada 2022 under CC BY 4.0 (creativecommons.org/licenses/by/4.0/)
Project Website:	www.natureserve.org/canada/ebar
Contact:	ebar-kba@natureserve.ca
Input References:	BISON - United States Geological Survey GBIF - Global Biodiversity Information Facility iNaturalist.ca - California Academy of Sciences and the National Geographic Society iNaturalist.ca (original coordinates for obscured records) - California Academy of Sciences and the National Geographic Society ON Element Occurrences - Natural Heritage Information Centre, Ontario Ministry of Natural Resources and Forestry ON Observations and Source Features - Natural Heritage Information Centre, Ontario Ministry of Natural Resources and Forestry
Reviewers by Taxa:	Reviewers by Taxa