

Bartonia paniculata ssp. *paniculata*

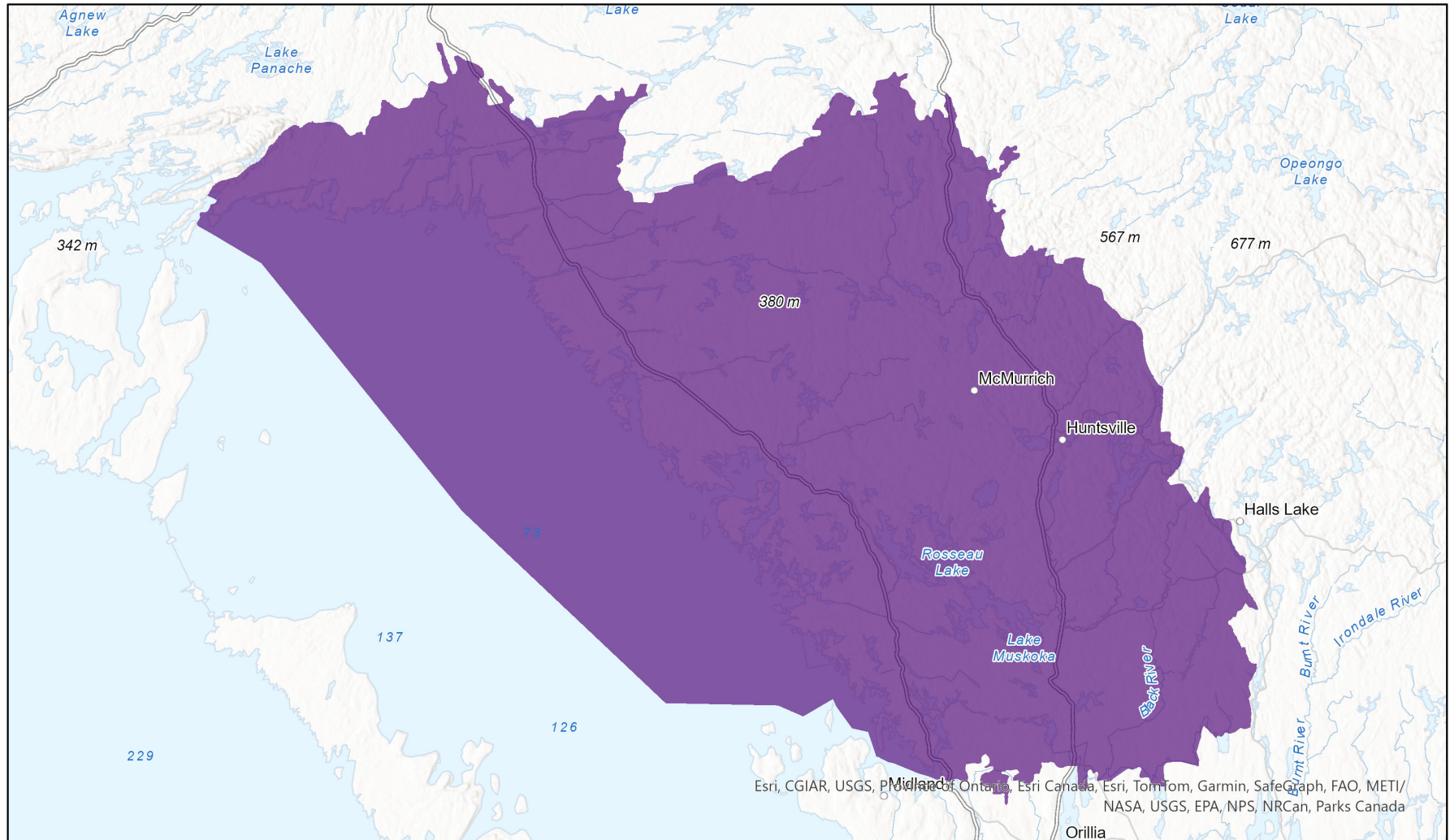


- Present
- Presence Expected
- Historical

Ecosystem-based Automated Range (EBAR)

Date Generated: October 28, 2024; Version: 1.0; Stage: Expert Reviewed (National); Scope: Canadian

Synonyms Used: *Bartonia paniculata paniculata*



Esri, CGIAR, USGS, PMW, Ontario, Esri Canada, Esri, TomTom, Garmin, SafeGraph, FAO, METI/NASA, USGS, EPA, NPS, NRCan, Parks Canada

0 25 50 km

Input Records - 9 ACCDC Observations, 6 BISON, 18 iNaturalist.ca (original coordinates for obscured records), 35 iNaturalist.org, 14 ON Element Occurrences, 198 ON Observations and Source Features; Expert Reviews - Wasyl Bakowsky, Sean Blaney

Map centre: 80.1495° W 45.4552° N
 © NatureServe Canada 2020 under CC BY 4.0

EBAR is relatively coarse scale data and not intended for all applications and analysis. Please see full disclaimer in metadata.

Ecosystem-based Automated Range (EBAR) Metadata

Species

National Scientific Name:	<i>Bartonia paniculata ssp. paniculata</i>
Scientific Name Reference:	Kartesz, J.T. 1994. A synonymized checklist of the vascular flora of the United States, Canada, and Greenland. 2nd edition. 2 vols. Timber Press, Portland, OR.
National English Name:	Branched Bartonia
National French Name:	Bartonie paniculée
Element National ID:	206493
Element Global ID:	143107 (go to NatureServe Explorer)
Element Code:	PDGEN01012
Endemism Type:	N
Canadian COSEWIC Name:	
Canadian COSEWIC ID:	241

Rank/Status

Global Rank:	G5T5 (reviewed November 07, 2023)
National Rank (Canada):	N2 (reviewed 2022)
Subnational Ranks (Canada):	ON=S2
National Rank (United States):	NNR
Subnational Ranks (United States):	AL=SNR, AR=S4, CT=SNR, DC=SNR, DE=S2, FL=SNR, GA=SNR, IL=SNR, IN=S3, KY=SNR, LA=SNR, MA=SNR, MD=SNR, ME=S1, MI=SNR, MO=S1, MS=SNR, NC=S2S3, NH=S1, NJ=S4, NY=S1, OH=SNR, OK=S1, PA=S3, RI=SNR, SC=SNR, TN=SNR, TX=SNR, VA=S3, WI=SNR, WV=S1
National Rank (Mexico):	None
Subnational Ranks (Mexico):	None
Canadian SARA Status:	Threatened/Menacée (July 14, 2005)
Canadian COSEWIC Status:	Threatened (November 01, 2003)
US ESA Status:	None

Range Map

Date Generated:	October 28, 2024
Version:	1.0
Stage:	Expert Reviewed (National)
Scope:	Canadian
Metadata:	Primary Species - <i>Bartonia paniculata ssp. paniculata</i> ; Synonyms - <i>Bartonia paniculata paniculata</i> Input Records - 9 ACCDC Observations, 6 BISON, 18 iNaturalist.ca (original coordinates for obscured records), 35 iNaturalist.org, 14 ON Element Occurrences, 198 ON Observations and Source Features; Expert Reviews - Wasyl Bakowsky, Sean Blaney
Comments:	None Please see spatial data for Ecoshape-level reviewer comments.
Disclaimer:	Please review our methods document before using EBAR. EBAR range data are relatively coarse scale and appropriate for screening and education purposes, but are not intended for all types of applications and analysis. The absence of data in any geographic areas does not necessarily mean that a species is not present. An ecoshape with a presence value does not necessarily mean that a species is present throughout the entire geographic area.
Presence Definitions:	(Please see Comments above for any exceptions) Present - the species is found within the ecoshape based on species observation data, Element Occurrences, Source Features, Canadian Federal Critical Habitat, or expert opinion. Presence Expected - expert opinion the species may be present, or the ecoshape overlapped with a range estimate or a habitat suitability model. Historical - all species occurrence data within the ecoshape contains observation data greater than 40 years old or an Element Occurrence (EO) that was ranked as Extirpated or Historical (EO Rank of H, H?, X or X?), or expert opinion that the species is extirpated or historical.
Usage Type Definitions:	(Please see Comments above for any exceptions) Breeding - the species is thought to breed within the ecoshape based on eBird Breeding and Behaviour Codes or expert opinion. Possible Breeding - the species is probably or possibly breeding within the ecoshape based on eBird, BBA or jurisdiction Breeding and Behaviour Codes, or on expert opinion.
Map Projection:	North America Albers Equal Area Conic (WKID 4269)

Credits

Suggested Citation:	NatureServe Canada, 2020. Ecosystem-based Automated Range (EBAR) for <i>Bartonia paniculata</i> ssp. <i>paniculata</i> , Version 1.0, Expert Reviewed (National) (Canadian Scope). Ottawa, Canada. Retrieved from [insert url] on [insert date]
License:	Ecosystem-based Automated Range (EBAR) Project, Copyright NatureServe Canada 2022 under CC BY 4.0 (creativecommons.org/licenses/by/4.0/)
Project Website:	www.natureserve.org/canada/ebar
Contact:	ebar-kba@natureserve.ca
Input References:	ACCDC Observations - Atlantic Canada Conservation Data Centre BISON - United States Geological Survey iNaturalist.ca (original coordinates for obscured records) - California Academy of Sciences and the National Geographic Society iNaturalist.org - California Academy of Sciences and the National Geographic Society ON Element Occurrences - Natural Heritage Information Centre, Ontario Ministry of Natural Resources and Forestry ON Observations and Source Features - Natural Heritage Information Centre, Ontario Ministry of Natural Resources and Forestry
Reviewers by Taxa:	Reviewers by Taxa