

Eleocharis atropurpurea



Ecosystem-based Automated Range (EBAR)

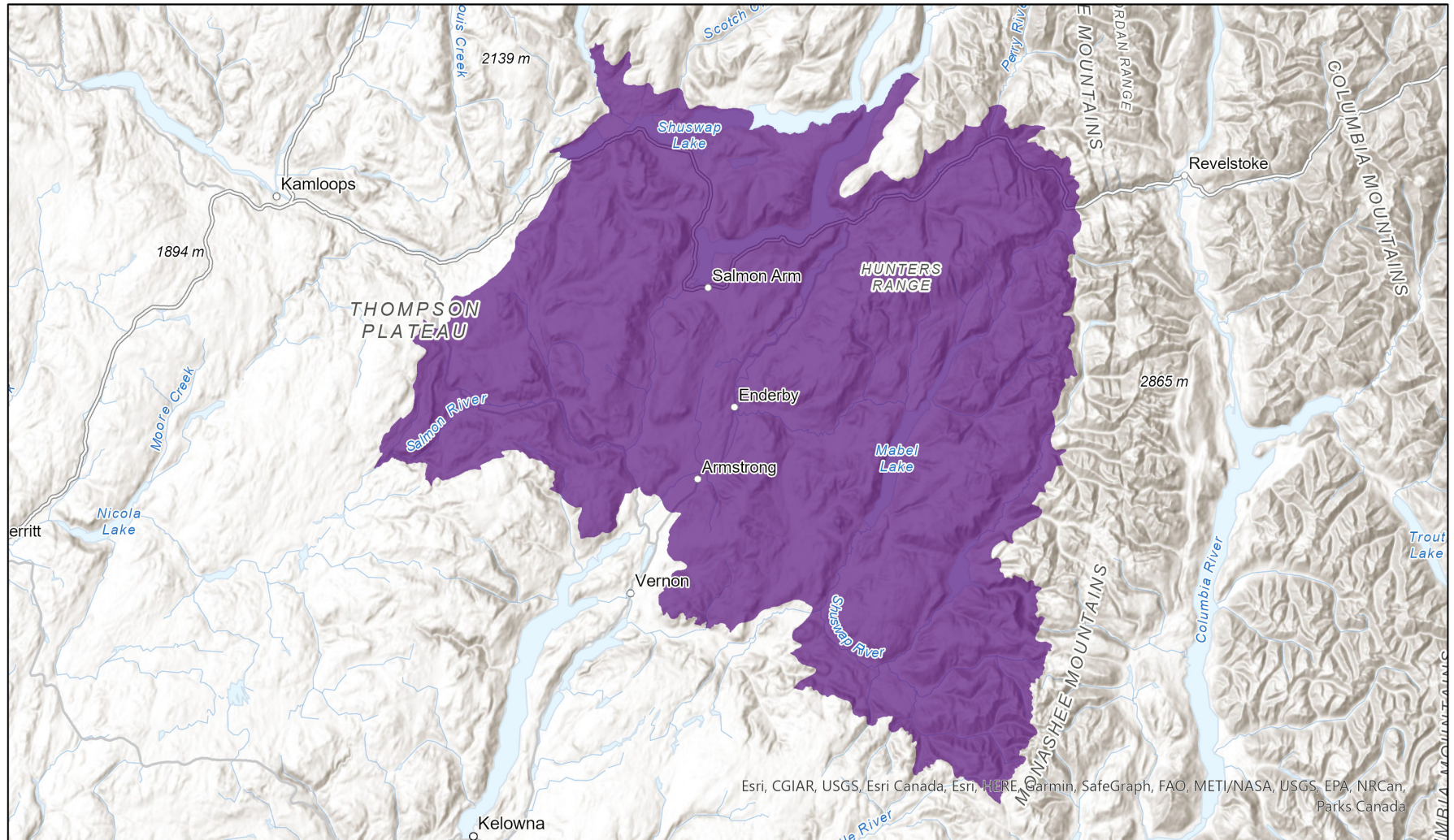
Date Generated: August 3, 2023; Version: 1.0; Stage: Expert Reviewed (National); Scope: Canadian

Synonyms Used: None

Present

Presence Expected

Historical



Esri, CGIAR, USGS, Esri Canada, Esri, HERE, Garmin, SafeGraph, FAO, METI/NASA, USGS, EPA, NRC, Parks Canada

0 20 40 km

Input Records - 1 BC Non-sensitive Element Occurrences, 1 BC Vascular Plant Observations, 2 BISON, 3 GBIF, 2 iDigBio, 1 iNaturalist.ca; Expert Reviews - Ryan Batten

Map centre: 119.1459° W 50.5263° N
© NatureServe Canada 2020 under CC BY 4.0

EBAR is relatively coarse scale data and not intended for all applications and analysis. Please see full disclaimer in metadata.

Ecosystem-based Automated Range (EBAR) Metadata

Species

National Scientific Name:	<i>Eleocharis atropurpurea</i> (Retz.) J.& K. Presl
Scientific Name Reference:	Kartesz, J.T. 1994. A synonymized checklist of the vascular flora of the United States, Canada, and Greenland. 2nd edition. 2 vols. Timber Press, Portland, OR.
National English Name:	Purple Spikerush
National French Name:	Héléocharis pourpre-noir; Souchet pourpre-noir; Éléocharide pourpre-noir
Element National ID:	234822
Element Global ID:	142942 (go to NatureServe Explorer)
Element Code:	PMCYP09040
Endemism Type:	N
Canadian COSEWIC Name:	
Canadian COSEWIC ID:	905

Rank/Status

Global Rank:	G4G5 (reviewed August 28, 2002)
National Rank (Canada):	N1 (reviewed 2022)
Subnational Ranks (Canada):	BC=S1
National Rank (United States):	NNR
Subnational Ranks (United States):	AL=SNR, CA=SNR, CO=SNR, FL=SNR, GA=S1S3, IA=S1, IN=SU, KS=S1, LA=SNR, MI=S1, MO=S1, MS=S1, NC=SNA, NE=S1, NM=SNR, NV=SNR, OK=S1, SC=S2, TX=SNR, WA=S1
National Rank (Mexico):	None
Subnational Ranks (Mexico):	None
Canadian SARA Status:	None
Canadian COSEWIC Status:	Non-active/Nonactive
US ESA Status:	None

Range Map

Date Generated:	August 03, 2023
Version:	1.0
Stage:	Expert Reviewed (National)
Scope:	Canadian
Metadata:	Primary Species - <i>Eleocharis atropurpurea</i> (Retz.) J.& K. Presl Input Records - 1 BC Non-sensitive Element Occurrences, 1 BC Vascular Plant Observations, 2 BISON, 3 GBIF, 2 iDigBio, 1 iNaturalist.ca; Expert Reviews - Ryan Batten
Comments:	None Please see spatial data for Ecoshape-level reviewer comments.
Disclaimer:	Please review our methods document before using EBAR. EBAR range data are relatively coarse scale and appropriate for screening and education purposes, but are not intended for all types of applications and analysis. The absence of data in any geographic areas does not necessarily mean that a species is not present. An ecoshape with a presence value does not necessarily mean that a species is present throughout the entire geographic area.
Presence Definitions:	(Please see Comments above for any exceptions) Present - the species is found within the ecoshape based on species observation data, Element Occurrences, Source Features, Canadian Federal Critical Habitat, or expert opinion. Presence Expected - expert opinion the species may be present, or the ecoshape overlapped with a range estimate or a habitat suitability model. Historical - all species occurrence data within the ecoshape contains observation data greater than 40 years old or an Element Occurrence (EO) that was ranked as Extirpated or Historical (EO Rank of H, H?, X or X?).
Usage Type Definitions:	(Please see Comments above for any exceptions) Breeding - the species is thought to breed within the ecoshape based on eBird Breeding and Behaviour Codes or expert opinion. Possible Breeding - the species is probably or possibly breeding within the ecoshape based on eBird, BBA or jurisdiction Breeding and Behaviour Codes, or on expert opinion.
Map Projection:	North America Albers Equal Area Conic (WKID 4269)

Credits

Suggested Citation:	NatureServe Canada, 2020. Ecosystem-based Automated Range (EBAR) for <i>Eleocharis atropurpurea</i> , Version 1.0, Expert Reviewed (National) (Canadian Scope). Ottawa, Canada. Retrieved from [insert url] on [insert date]
License:	Ecosystem-based Automated Range (EBAR) Project, Copyright NatureServe Canada 2022 under CC BY 4.0 (creativecommons.org/licenses/by/4.0/)
Project Website:	www.natureserve.org/canada/ebar
Contact:	ebar-kba@natureserve.ca
Input References:	BC Non-sensitive Element Occurrences - British Columbia Conservation Data Centre BC Vascular Plant Observations - British Columbia Conservation Data Centre BISON - United States Geological Survey (https://bison.usgs.gov/) GBIF - Global Biodiversity Information Facility (https://www.gbif.org) iDigBio - Integrated Digital Biocollection (https://www.idigbio.org/) iNaturalist.ca - California Academy of Sciences and the National Geographic Society (https://www.inaturalist.ca/)
Reviewers by Taxa:	Reviewers by Taxa