

# *Isoetes bolanderi*

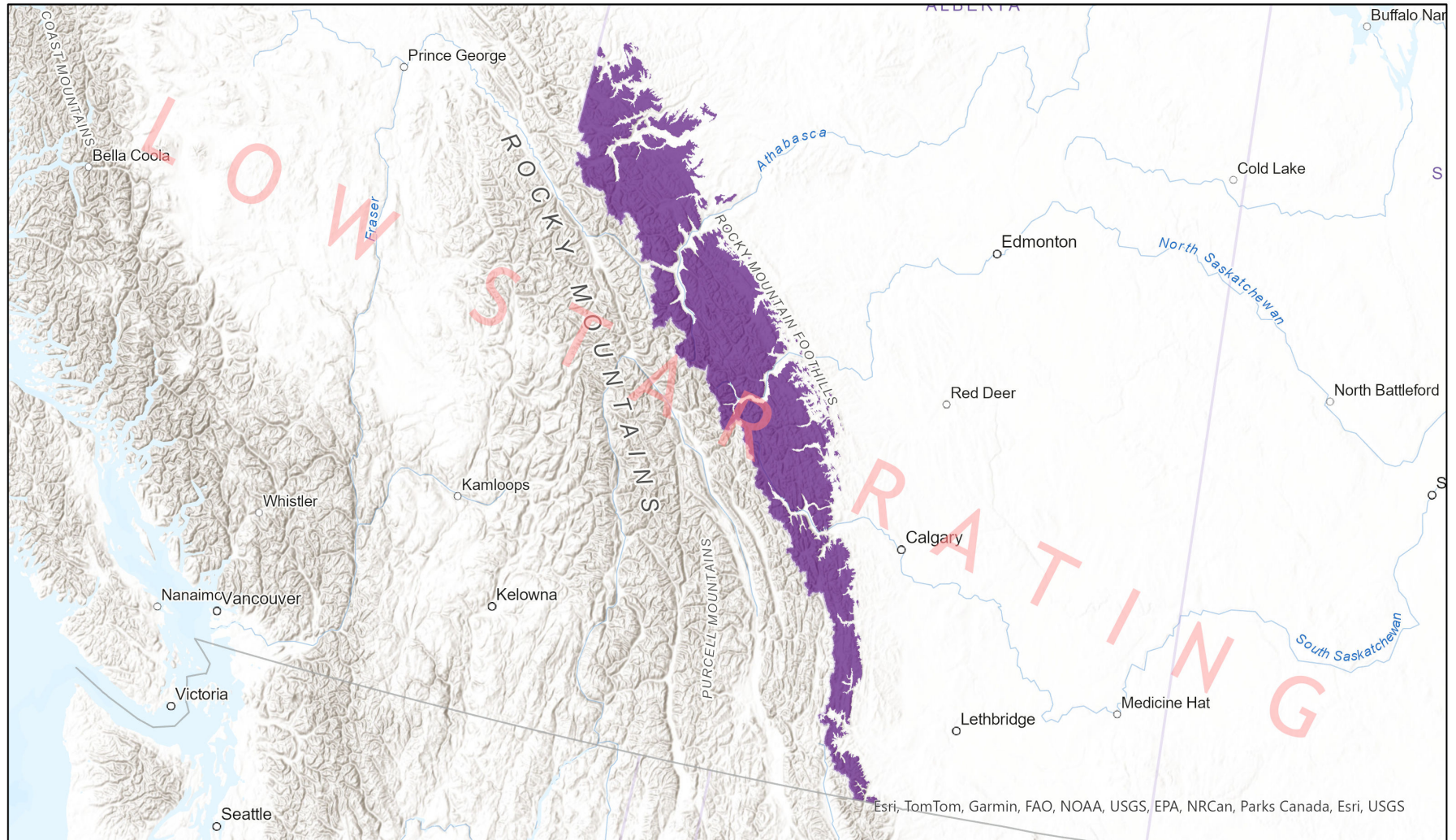


- Present
- Presence Expected
- Historical

## Ecosystem-based Automated Range (EBAR)

Date Generated: April 6, 2022; Version: 1.0; Stage: Expert Reviewed (Low Star Rating); Scope: Canadian

Synonyms Used: None



0 120 240 km

Input Records - 3 AB Element Occurrences, 18 BISON, 21 GBIF, 2 iDigBio, 3 iNaturalist.ca, 6 iNaturalist.org; Expert Reviews - Joyce Gould

Map centre: 116.8578°W 51.7587°N  
© NatureServe Canada 2020 under CC BY 4.0  
EBAR is relatively coarse scale data and not intended for all applications and analysis. Please see full disclaimer in metadata.

## Ecosystem-based Automated Range (EBAR) Metadata

---

### Species

National Scientific Name:	<i>Isoetes bolanderi</i> Engelm.
Scientific Name Reference:	Flora of North America Editorial Committee. 1993a. Flora of North America north of Mexico. Vol. 2. Pteridophytes and gymnosperms. Oxford Univ. Press, New York. xvi + 475 pp.
National English Name:	Bolander's Quillwort
National French Name:	Isoète de Bolander
Element National ID:	219619
Element Global ID:	141815 ( <a href="#">go to NatureServe Explorer</a> )
Element Code:	PPISO01010
Endemism Type:	N
Canadian COSEWIC Name:	
Canadian COSEWIC ID:	243

## Rank/Status

Global Rank:	G4 (reviewed July 28, 2016)
National Rank (Canada):	N1 (reviewed 2022)
Subnational Ranks (Canada):	AB=S1
National Rank (United States):	N4
Subnational Ranks (United States):	AZ=S1, CA=SNR, CO=SNR, ID=SNR, MT=S4, NM=SNR, NN=S1S2, NV=S3, OR=SNR, UT=SNR, WA=SNR, WY=S3
National Rank (Mexico):	None
Subnational Ranks (Mexico):	None
Canadian SARA Status:	Threatened/Menacée (December 13, 2007)
Canadian COSEWIC Status:	Threatened (April 29, 2006)
US ESA Status:	None

## Range Map

Date Generated:	April 06, 2022
Version:	1.0
Stage:	Expert Reviewed (Low Star Rating)
Scope:	Canadian
Metadata:	Primary Species Name - <i>Isoetes bolanderi</i> Engelm. Input Records - 3 AB Element Occurrences, 18 BISON, 21 GBIF, 2 iDigBio, 3 iNaturalist.ca, 6 iNaturalist.org; Expert Reviews - Joyce Gould
Comments:	This range has a low star rating.
Disclaimer:	<p>Please review our <a href="#">methods document</a> before using EBAR.</p> <p>EBAR range data are relatively coarse scale and appropriate for screening and education purposes, but are not intended for all types of applications and analysis.</p> <p>The absence of data in any geographic areas does not necessarily mean that a species is not present.</p> <p>An ecoshape with a presence value does not necessarily mean that a species is present throughout the entire geographic area.</p>
Presence Definitions:	<p>(Please see Comments above for any exceptions)</p> <p>Present - the species is found within the ecoshape based on species observation data, Element Occurrences, Source Features, Canadian Federal Critical Habitat, or expert opinion.</p> <p>Presence Expected - expert opinion the species may be present, or the ecoshape overlapped with a range estimate or a habitat suitability model.</p> <p>Historical - all species occurrence data within the ecoshape contains observation data greater than 40 years old or an Element Occurrence (EO) that was ranked as Extirpated or Historical (EO Rank of H, H?, X or X?).</p>
Usage Type Definitions:	<p>(Please see Comments above for any exceptions)</p> <p>Breeding - the species is thought to breed within the ecoshape based on eBird Breeding and Behaviour Codes or expert opinion.</p> <p>Possible Breeding - the species is probably or possibly breeding within the ecoshape based on eBird, BBA or jurisdiction Breeding and Behaviour Codes, or on expert opinion.</p>
Map Projection:	North America Albers Equal Area Conic (WKID 4269)

## Credits

**Suggested Citation:**

NatureServe Canada, 2020. Ecosystem-based Automated Range (EBAR) for *Isoetes bolanderi*, Version 1.0, Expert Reviewed (Low Star Rating) (Canadian Scope). Ottawa, Canada. Retrieved from [insert url] on [insert date]

**License:**

Ecosystem-based Automated Range (EBAR) Project, Copyright NatureServe Canada 2022 under CC BY 4.0 ([creativecommons.org/licenses/by/4.0/](https://creativecommons.org/licenses/by/4.0/))

**Project Website:**

[www.natureserve.org/canada/ebars](http://www.natureserve.org/canada/ebars)

**Contact:**

[ebars-kba@natureserve.ca](mailto:ebars-kba@natureserve.ca)

**Input References:**

AB Element Occurrences - Alberta Conservation Information Management System, Alberta Environment and Parks, Edmonton

BISON - [United States Geological Survey](#)

GBIF - [Global Biodiversity Information Facility](#)

iDigBio - [Integrated Digital Biocollection](#)

iNaturalist.ca (original coordinates for obscured records) - [California Academy of Sciences and the National Geographic Society](#)

iNaturalist.org - [California Academy of Sciences and the National Geographic Society](#)

**Reviewers by Taxa:**

[Reviewers by Taxa](#)