

Crataegus brainerdii

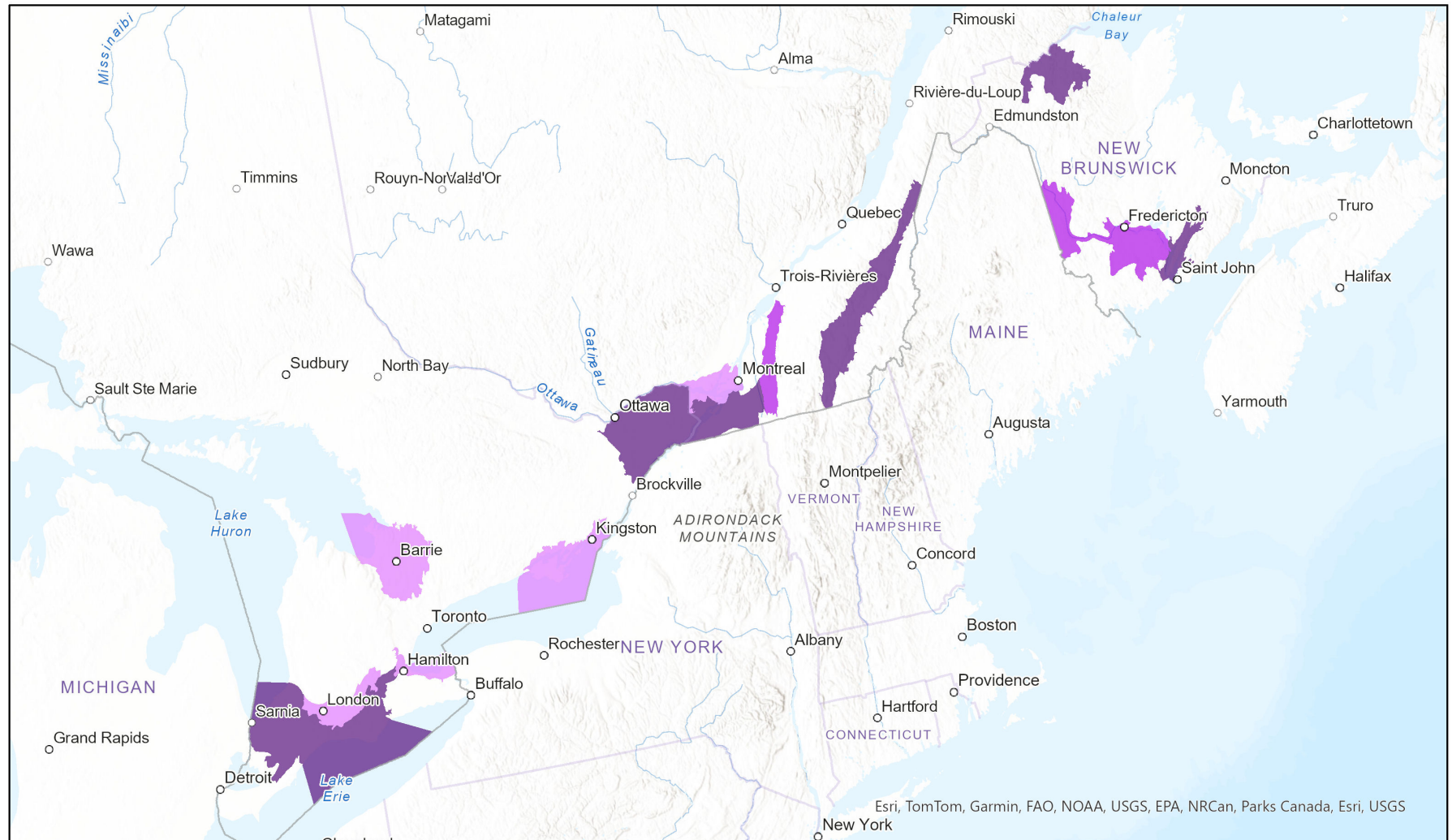


- Present
- Presence Expected
- Historical

Ecosystem-based Automated Range (EBAR)

Date Generated: March 26, 2025; Version: 1.0; Stage: Expert Reviewed (National); Scope: Canadian

Synonyms Used: None



0 150 300 km Input Records - 3 ACCDC Observations, 13 BISON, 4 GBIF, 7 iNaturalist.ca, 14 ON Element Occurrences, 15 ON Observations and Source Features, 9 QC Element Occurrences; Expert Reviews - Étienne Lacroix-Carignan, Sean Blaney, Wasyl Bakowsky, Étienne Lacroix-Carignan

Map centre: 73.879°W 45.0927°N
© NatureServe Canada 2020 under CC BY 4.0

EBAR is relatively coarse scale data and not intended for all applications and analysis. Please see full disclaimer in metadata.

Ecosystem-based Automated Range (EBAR) Metadata

Species

National Scientific Name:	<i>Crataegus brainerdii</i> Sarg.
Scientific Name Reference:	Flora of North America Editorial Committee (FNA). 2014b. Flora of North America north of Mexico. Vol. 9. Magnoliophyta: Picramniaceae to Rosaceae. Oxford University Press, New York. xxiv + 713 pp.
National English Name:	Brainerd's Hawthorn
National French Name:	Aubépine de Brainerd
Element National ID:	220141
Element Global ID:	138536 (go to NatureServe Explorer)
Element Code:	PDROS0H0P0
Endemism Type:	N
Canadian COSEWIC Name:	
Canadian COSEWIC ID:	

Rank/Status

Global Rank:	G5 (reviewed February 29, 1984)
National Rank (Canada):	N2 (reviewed 2023)
Subnational Ranks (Canada):	ON=S2, QC=S1
National Rank (United States):	NNR
Subnational Ranks (United States):	CT=SNR, MA=SNR, ME=SNR, MI=SNR, NC=SNR, NH=SNR, NY=S3?, OH=SNR, PA=SU, VT=SU
National Rank (Mexico):	None
Subnational Ranks (Mexico):	None
Canadian SARA Status:	None
Canadian COSEWIC Status:	None
US ESA Status:	None

Range Map

Date Generated:	March 26, 2025
Version:	1.0
Stage:	Expert Reviewed (National)
Scope:	Canadian
Metadata:	<p>Primary Species - <i>Crataegus brainerdii</i> Sarg.</p> <p>Input Records - 3 ACCDC Observations, 13 BISON, 4 GBIF, 7 iNaturalist.ca, 14 ON Element Occurrences, 15 ON Observations and Source Features, 9 QC Element Occurrences; Expert Reviews - Étienne Lacroix-Carignan, Sean Blaney, Wasyl Bakowsky, Étienne Lacroix-Carignan</p>
Comments:	<p>None</p> <p>Please see spatial data for Ecoshape-level reviewer comments.</p>
Disclaimer:	<p>Please review our methods document before using EBAR.</p> <p>EBAR range data are relatively coarse scale and appropriate for screening and education purposes, but are not intended for all types of applications and analysis.</p> <p>The absence of data in any geographic areas does not necessarily mean that a species is not present.</p> <p>An ecoshape with a presence value does not necessarily mean that a species is present throughout the entire geographic area.</p>
Presence Definitions:	<p>(Please see Comments above for any exceptions)</p> <p>Present - the species is found within the ecoshape based on species observation data, Element Occurrences, Source Features, Canadian Federal Critical Habitat, or expert opinion.</p> <p>Presence Expected - expert opinion the species may be present, or the ecoshape overlapped with a range estimate or a habitat suitability model.</p> <p>Historical - all species occurrence data within the ecoshape contains observation data greater than 40 years old or an Element Occurrence (EO) that was ranked as Extirpated or Historical (EO Rank of H, H?, X or X?), or expert opinion that the species is extirpated or historical.</p>
Usage Type Definitions:	<p>(Please see Comments above for any exceptions)</p> <p>Breeding - the species is thought to breed within the ecoshape based on eBird Breeding and Behaviour Codes or expert opinion.</p> <p>Possible Breeding - the species is probably or possibly breeding within the ecoshape based on eBird, BBA or jurisdiction Breeding and Behaviour Codes, or on expert opinion.</p>
Map Projection:	North America Albers Equal Area Conic (WKID 4269)

Credits

Suggested Citation:

NatureServe Canada, 2020. Ecosystem-based Automated Range (EBAR) for *Crataegus brainerdii*, Version 1.0, Expert Reviewed (National) (Canadian Scope). Ottawa, Canada. Retrieved from [insert url] on [insert date]

License:

Ecosystem-based Automated Range (EBAR) Project, Copyright NatureServe Canada 2024 under CC BY 4.0 (creativecommons.org/licenses/by/4.0/)

Project Website:

www.natureserve.org/canada/ebars

Contact:

ebars-kba@natureserve.ca

Input References:

ACCDC Observations - Atlantic Canada Conservation Data Centre

BISON - [United States Geological Survey](#)

GBIF - [Global Biodiversity Information Facility](#)

iNaturalist.ca - [California Academy of Sciences and the National Geographic Society](#)

ON Element Occurrences - Natural Heritage Information Centre, Ontario Ministry of Natural Resources and Forestry

ON Observations and Source Features - Natural Heritage Information Centre, Ontario Ministry of Natural Resources and Forestry

QC Element Occurrences - Centre de Données sur le Patrimoine Naturel du Québec

Reviewers by Taxa:

[Reviewers by Taxa](#)