

Woodsia obtusa

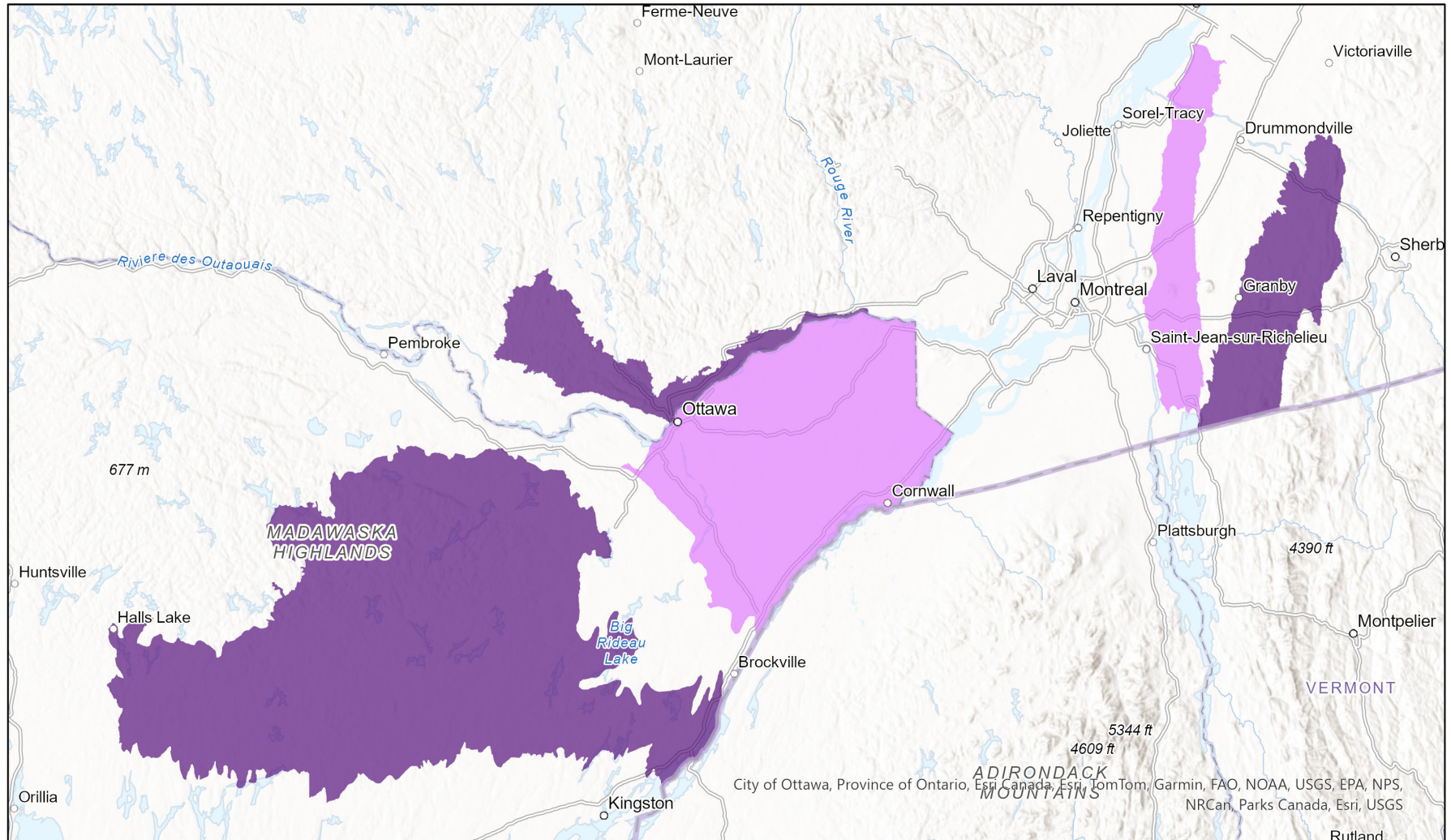


Ecosystem-based Automated Range (EBAR)

Date Generated: March 20, 2024; Version: 1.0; Stage: Expert Reviewed (National); Scope: Canadian

Synonyms Used: *Physematium obtusum*

- Present
- Presence Expected
- Historical



0 40 80 km Input Records - 15 BISON, 4 ECC Critical Habitat, 81 GBIF, 2 iDigBio, 25 iNaturalist.ca (original coordinates for obscured records), 4 iNaturalist.org, 4 ON Element Occurrences, 44 ON Observations and Source Features, 5 QC Element Occurrences; Expert Reviews - Frédéric Coursol, Wasyl Bakowsky

Map centre: 75.4478° W 45.3839° N
 © NatureServe Canada 2020 under CC BY 4.0

EBAR is relatively coarse scale data and not intended for all applications and analysis. Please see full disclaimer in metadata.

Ecosystem-based Automated Range (EBAR) Metadata

Species

National Scientific Name:	<i>Woodsia obtusa</i> (Spreng.) Torr.
Scientific Name Reference:	Flora of North America Editorial Committee. 1993a. Flora of North America north of Mexico. Vol. 2. Pteridophytes and gymnosperms. Oxford Univ. Press, New York. xvi + 475 pp.
National English Name:	Blunt-lobed Woodsia
National French Name:	Woodsie à lobes arrondis
Element National ID:	219261
Element Global ID:	134936 (go to NatureServe Explorer)
Element Code:	PPDRY0U070
Endemism Type:	N
Canadian COSEWIC Name:	
Canadian COSEWIC ID:	212

Rank/Status

Global Rank:	G5 (reviewed July 28, 2016)
National Rank (Canada):	N2 (reviewed 2023)
Subnational Ranks (Canada):	ON=S1, QC=SNR
National Rank (United States):	N5
Subnational Ranks (United States):	AL=SNR, AR=SNR, CT=SNR, DC=SNR, DE=S2, FL=SNR, GA=SNR, IA=S4, IL=S5, IN=SNR, KS=SNR, KY=SNR, LA=SNR, MA=SNR, MD=SNR, ME=S1, MI=S1S2, MN=S3, MO=SNR, MS=S4?, NC=S5, NE=SNR, NH=SNR, NJ=SNR, NY=S5, OH=SNR, OK=SNR, PA=S5, RI=SNR, SC=SNR, TN=SNR, TX=SNR, VA=SNR, VT=S3, WI=SNR, WV=S5
National Rank (Mexico):	None
Subnational Ranks (Mexico):	None
Canadian SARA Status:	Threatened/Menacée (June 05, 2003)
Canadian COSEWIC Status:	Threatened (April 22, 2007)
US ESA Status:	None

Range Map

Date Generated:	March 20, 2024
Version:	1.0
Stage:	Expert Reviewed (National)
Scope:	Canadian
Metadata:	Primary Species - <i>Woodsia obtusa</i> (Spreng.) Torr.; Secondary Species - <i>Woodsia obtusa ssp. obtusa</i> ; Synonyms - <i>Physematium obtusum</i> (Spreng.) Hook. Input Records - 15 BISON, 4 ECCC Critical Habitat, 81 GBIF, 2 iDigBio, 25 iNaturalist.ca (original coordinates for obscured records), 4 iNaturalist.org, 4 ON Element Occurrences, 44 ON Observations and Source Features, 5 QC Element Occurrences; Expert Reviews - Frédéric Coursol, Wasyl Bakowsky
Comments:	None Please see spatial data for Ecoshape-level reviewer comments.
Disclaimer:	Please review our methods document before using EBAR. EBAR range data are relatively coarse scale and appropriate for screening and education purposes, but are not intended for all types of applications and analysis. The absence of data in any geographic areas does not necessarily mean that a species is not present.

An ecoshape with a presence value does not necessarily mean that a species is present throughout the entire geographic area.

Presence Definitions:

(Please see Comments above for any exceptions)

Present - the species is found within the ecoshape based on species observation data, Element Occurrences, Source Features, Canadian Federal Critical Habitat, or expert opinion.

Presence Expected - expert opinion the species may be present, or the ecoshape overlapped with a range estimate or a habitat suitability model.

Historical - all species occurrence data within the ecoshape contains observation data greater than 40 years old or an Element Occurrence (EO) that was ranked as Extirpated or Historical (EO Rank of H, H?, X or X?).

Usage Type Definitions:

(Please see Comments above for any exceptions)

Breeding - the species is thought to breed within the ecoshape based on eBird Breeding and Behaviour Codes or expert opinion.

Possible Breeding - the species is probably or possibly breeding within the ecoshape based on eBird, BBA or jurisdiction Breeding and Behaviour Codes, or on expert opinion.

Map Projection:

North America Albers Equal Area Conic (WKID 4269)

Credits

Suggested Citation:	NatureServe Canada, 2020. Ecosystem-based Automated Range (EBAR) for <i>Woodsia obtusa</i> , Version 1.0, Expert Reviewed (National) (Canadian Scope). Ottawa, Canada. Retrieved from [insert url] on [insert date]
License:	Ecosystem-based Automated Range (EBAR) Project, Copyright NatureServe Canada 2022 under CC BY 4.0 (creativecommons.org/licenses/by/4.0/)
Project Website:	www.natureserve.org/canada/ebar
Contact:	ebar-kba@natureserve.ca
Input References:	BISON - United States Geological Survey ECCC Critical Habitat - Environment and Climate Change Canada GBIF - Global Biodiversity Information Facility iDigBio - Integrated Digital Biocollection iNaturalist.ca (original coordinates for obscured records) - California Academy of Sciences and the National Geographic Society iNaturalist.org - California Academy of Sciences and the National Geographic Society ON Element Occurrences - Natural Heritage Information Centre, Ontario Ministry of Natural Resources and Forestry ON Observations and Source Features - Natural Heritage Information Centre, Ontario Ministry of Natural Resources and Forestry QC Element Occurrences - Centre de Données sur le Patrimoine Naturel du Québec
Reviewers by Taxa:	Reviewers by Taxa