

Draba yukonensis

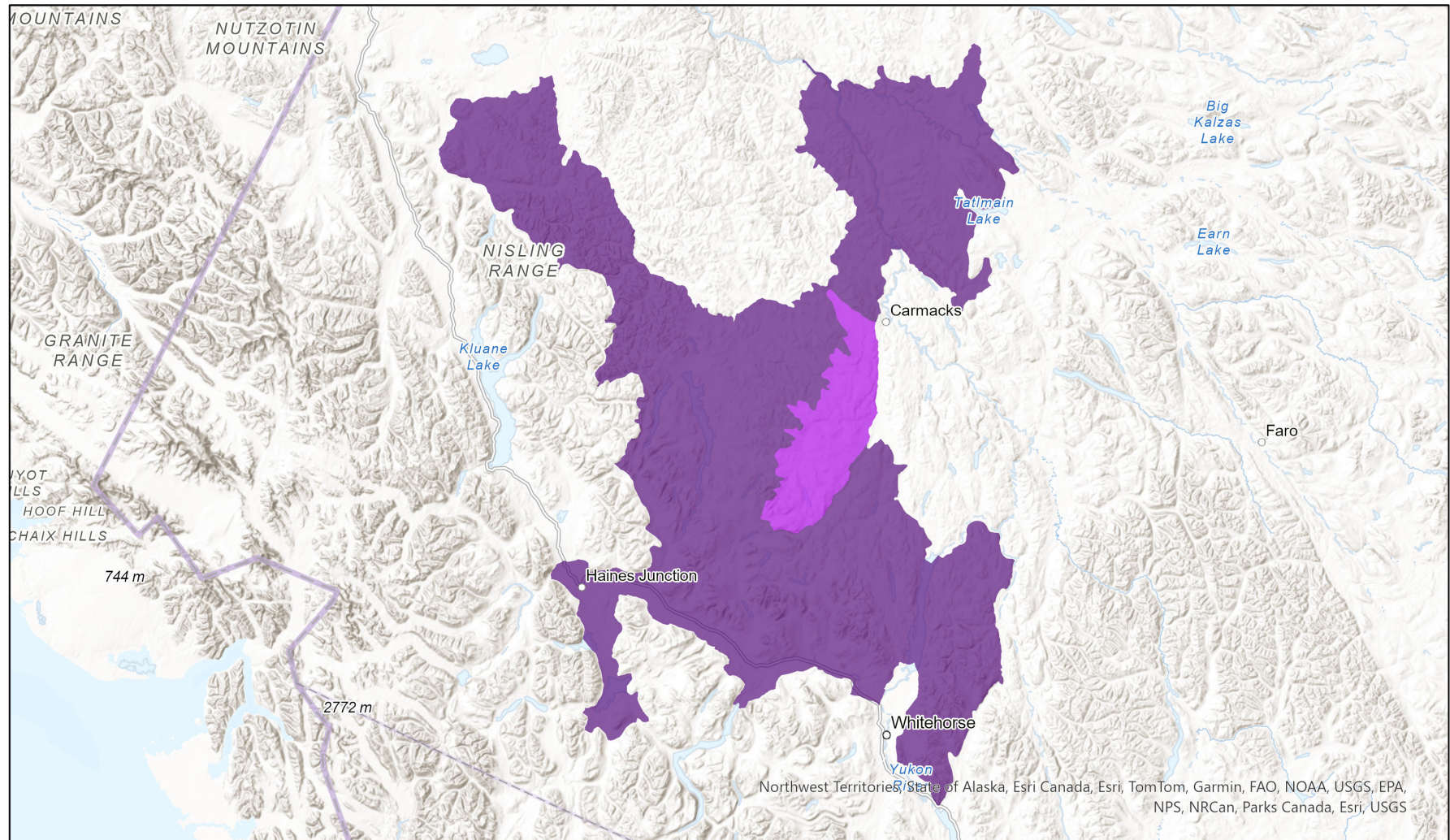
- Present
- Presence Expected
- Historical



Ecosystem-based Automated Range (EBAR)

Date Generated: March 19, 2024; Version: 1.1; Stage: Expert Reviewed; Scope: Global

Synonyms Used: None



0 50 100 km
Map centre: 137.0348°W 61.511°N

© NatureServe Canada 2020 under CC BY 4.0
EBAR is relatively coarse scale data and not intended for all applications and analysis. Please see full disclaimer in metadata.

Input Records - 28 BISON, 172 GBIF, 1 iDigBio, 13 iNaturalist.ca, 21 iNaturalist.ca (original coordinates for obscured records), 12 iNaturalist.org, 22 YT Element Occurrences, 50 YT Source Feature Points, 13 YT Source Feature Polygons; Expert Reviews - Syd Cannings

Northwest Territories, State of Alaska, Esri Canada, Esri, TomTom, Garmin, FAO, NOAA, USGS, EPA, NPS, NRCan, Parks Canada, Esri, USGS

Ecosystem-based Automated Range (EBAR) Metadata

Species

National Scientific Name:	<i>Draba yukonensis</i> Porsild
Scientific Name Reference:	Flora of North America Editorial Committee. 2010. Flora of North America North of Mexico. Vol. 7. Magnoliophyta: Salicaceae to Brassicaceae. Oxford University Press, New York. xxii + 797 pp.
National English Name:	Yukon Draba
National French Name:	Drave du Yukon
Element National ID:	228761
Element Global ID:	134894 (go to NatureServe Explorer)
Element Code:	PDBRA112P0
Endemism Type:	Y
Canadian COSEWIC Name:	
Canadian COSEWIC ID:	1171

Rank/Status

Global Rank:	G2G3 (reviewed May 15, 2023)
National Rank (Canada):	N2N3 (reviewed 2023)
Subnational Ranks (Canada):	YT=S2S3
National Rank (United States):	None
Subnational Ranks (United States):	None
National Rank (Mexico):	None
Subnational Ranks (Mexico):	None
Canadian SARA Status:	None
Canadian COSEWIC Status:	Special Concern (November 01, 2018)
US ESA Status:	None

Range Map

Date Generated:	March 19, 2024
Version:	1.1
Stage:	Expert Reviewed
Scope:	Global
Metadata:	Primary Species - <i>Draba yukonensis</i> Porsild Input Records - 28 BISON, 172 GBIF, 1 iDigBio, 13 iNaturalist.ca, 21 iNaturalist.ca (original coordinates for obscured records), 12 iNaturalist.org, 22 YT Element Occurrences, 50 YT Source Feature Points, 13 YT Source Feature Polygons; Expert Reviews - Syd Cannings
Comments:	The true range of this species is much smaller. <i>Draba yukonensis</i> is endemic to central Yukon, Canada. The species occurs in low elevation grasslands. Please see spatial data for Ecoshape-level reviewer comments.
Disclaimer:	Please review our methods document before using EBAR. EBAR range data are relatively coarse scale and appropriate for screening and education purposes, but are not intended for all types of applications and analysis. The absence of data in any geographic areas does not necessarily mean that a species is not present. An ecoshape with a presence value does not necessarily mean that a species is present throughout the entire geographic area.
Presence Definitions:	(Please see Comments above for any exceptions) Present - the species is found within the ecoshape based on species observation data, Element Occurrences, Source Features, Canadian Federal Critical Habitat, or expert opinion. Presence Expected - expert opinion the species may be present, or the ecoshape overlapped with a range estimate or a habitat suitability model. Historical - all species occurrence data within the ecoshape contains observation data greater than 40 years old or an Element Occurrence (EO) that was ranked as Extirpated or Historical (EO Rank of H, H?, X or X?).
Usage Type Definitions:	(Please see Comments above for any exceptions) Breeding - the species is thought to breed within the ecoshape based on eBird Breeding and Behaviour Codes or expert opinion. Possible Breeding - the species is probably or possibly breeding within the ecoshape based on eBird, BBA or jurisdiction Breeding and Behaviour Codes, or on expert opinion.
Map Projection:	North America Albers Equal Area Conic (WKID 4269)

Credits

Suggested Citation:	NatureServe Canada, 2020. Ecosystem-based Automated Range (EBAR) for <i>Draba yukonensis</i> , Version 1.1, Expert Reviewed (Global Scope). Ottawa, Canada. Retrieved from [insert url] on [insert date]
License:	Ecosystem-based Automated Range (EBAR) Project, Copyright NatureServe Canada 2022 under CC BY 4.0 (creativecommons.org/licenses/by/4.0/)
Project Website:	www.natureserve.org/canada/ebars
Contact:	ebars-kba@natureserve.ca
Input References:	<p>BISON - United States Geological Survey</p> <p>GBIF - Global Biodiversity Information Facility</p> <p>iDigBio - Integrated Digital Biocollection</p> <p>iNaturalist.ca - California Academy of Sciences and the National Geographic Society</p> <p>iNaturalist.ca (original coordinates for obscured records) - California Academy of Sciences and the National Geographic Society</p> <p>iNaturalist.org - California Academy of Sciences and the National Geographic Society</p> <p>YT Element Occurrences - Yukon Conservation Data Centre</p> <p>YT Source Feature Points - Yukon Conservation Data Centre</p> <p>YT Source Feature Polygons - Yukon Conservation Data Centre</p>
Reviewers by Taxa:	Reviewers by Taxa