

Antennaria corymbosa

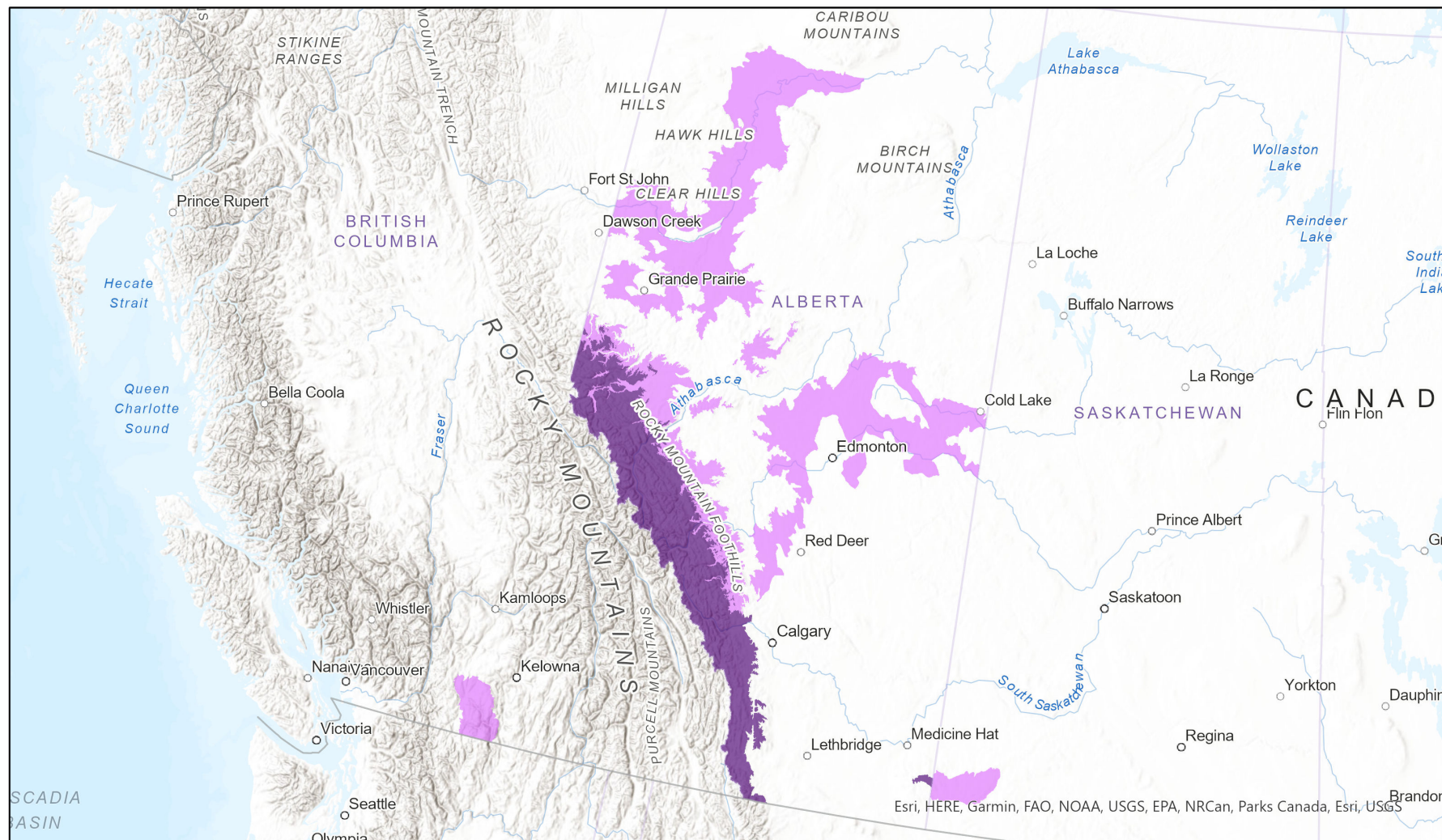


- Present
- Presence Expected
- Historical

Ecosystem-based Automated Range (EBAR)

Date Generated: February 16, 2023; Version: 1.0; Stage: Expert Reviewed (National); Scope: Canadian

Synonyms Used: None



0 190 380 km
 Input Records - 12 AB Element Occurrences, 13 AB Source Feature Polygons, 2 BISON, 4 GBIF, 2 SK Element Occurrences, 3 SK Source Feature Polygons; Expert

Map centre: 116.1169°W 53.6933°N
 © NatureServe Canada 2020 under CC BY 4.0

EBAR is relatively coarse scale data and not intended for all applications and analysis. Please see full disclaimer in metadata.

Reviews - Sarah Vinge-Mazer, Varina Crisfield

Ecosystem-based Automated Range (EBAR) Metadata

Species

National Scientific Name:	<i>Antennaria corymbosa</i> E. Nels.
Scientific Name Reference:	Kartesz, J.T. 1994. A synonymized checklist of the vascular flora of the United States, Canada, and Greenland. 2nd edition. 2 vols. Timber Press, Portland, OR.
National English Name:	Flat-top Pussytoes
National French Name:	Antennaire à corymbe
Element National ID:	217029
Element Global ID:	134833 (go to NatureServe Explorer)
Element Code:	PDAST0H070
Endemism Type:	N
Canadian COSEWIC Name:	
Canadian COSEWIC ID:	

Rank/Status

Global Rank:	G5 (reviewed August 27, 2016)
National Rank (Canada):	N2 (reviewed 2017)
Subnational Ranks (Canada):	AB=S2, SK=S1
National Rank (United States):	NNR
Subnational Ranks (United States):	CA=SNR, CO=SNR, ID=SNR, MT=S3S4, NV=SNR, OR=SNR, UT=SNR, WA=S1, WY=S3
National Rank (Mexico):	None
Subnational Ranks (Mexico):	None
Canadian SARA Status:	None
Canadian COSEWIC Status:	None
US ESA Status:	None

Range Map

Date Generated:	February 16, 2023
Version:	1.0
Stage:	Expert Reviewed (National)
Scope:	Canadian
Metadata:	Primary Species - <i>Antennaria corymbosa</i> E. Nels. Input Records - 12 AB Element Occurrences, 13 AB Source Feature Polygons, 2 BISON, 4 GBIF, 2 SK Element Occurrences, 3 SK Source Feature Polygons; Expert Reviews - Sarah Vinge-Mazer, Varina Crisfield
Comments:	None Please see spatial data for Ecoshape-level reviewer comments.
Disclaimer:	Please review our methods document before using EBAR. EBAR range data are relatively coarse scale and appropriate for screening and education purposes, but are not intended for all types of applications and analysis. The absence of data in any geographic areas does not necessarily mean that a species is not present. An ecoshape with a presence value does not necessarily mean that a species is present throughout the entire geographic area.
Presence Definitions:	(Please see Comments above for any exceptions) Present - the species is found within the ecoshape based on species observation data, Element Occurrences, Source Features, Canadian Federal Critical Habitat, or expert opinion. Presence Expected - expert opinion the species may be present, or the ecoshape overlapped with a range estimate or a habitat suitability model. Historical - all species occurrence data within the ecoshape contains observation data greater than 40 years old or an Element Occurrence (EO) that was ranked as Extirpated or Historical (EO Rank of H, H?, X or X?).
Usage Type Definitions:	(Please see Comments above for any exceptions) Breeding - the species is thought to breed within the ecoshape based on eBird Breeding and Behaviour Codes or expert opinion. Possible Breeding - the species is probably or possibly breeding within the ecoshape based on eBird, BBA or jurisdiction Breeding and Behaviour Codes, or on expert opinion.
Map Projection:	North America Albers Equal Area Conic (WKID 4269)

Credits

Suggested Citation:

NatureServe Canada, 2020. Ecosystem-based Automated Range (EBAR) for *Antennaria corymbosa*, Version 1.0, Expert Reviewed (National) (Canadian Scope). Ottawa, Canada. Retrieved from [insert url] on [insert date]

License:

Ecosystem-based Automated Range (EBAR) Project, Copyright NatureServe Canada 2022 under CC BY 4.0 (creativecommons.org/licenses/by/4.0/)

Project Website:

www.natureserve.org/canada/ebar

Contact:

ebbar-kba@natureserve.ca

Input References:

AB Element Occurrences - Alberta Conservation Information Management System, Alberta Environment and Parks, Edmonton

AB Source Feature Polygons - Alberta Conservation Information Management System, Alberta Environment and Parks, Edmonton

BISON - United States Geological Survey (<https://bison.usgs.gov/>)

GBIF - Global Biodiversity Information Facility (<https://www.gbif.org>)

SK Element Occurrences - Saskatchewan Conservation Data Centre

SK Source Feature Polygons - Saskatchewan Conservation Data Centre

Reviewers by Taxa:

[Reviewers by Taxa](#)