

# Castilleja rupicola

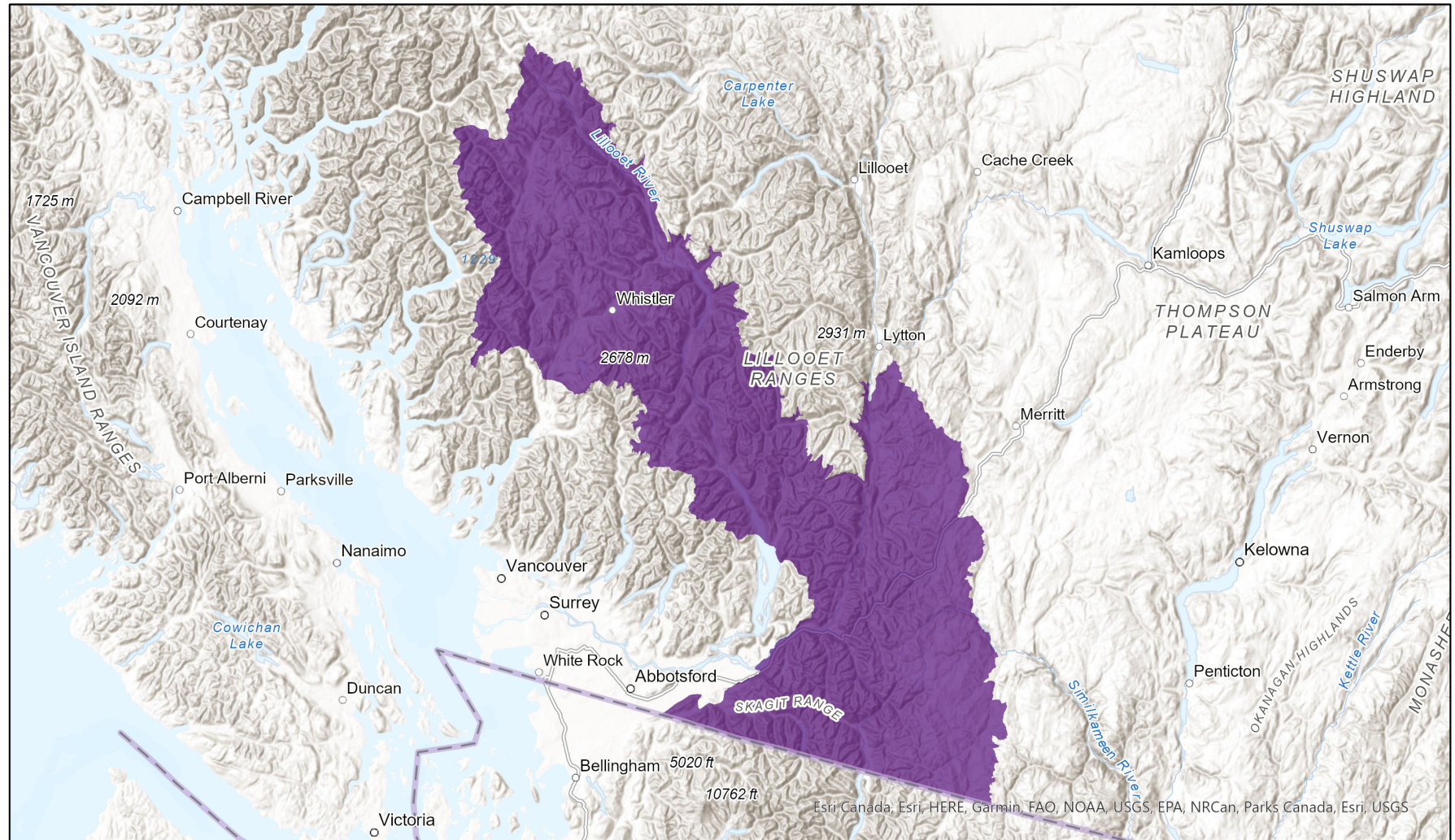
- Present
- Presence Expected
- Historical



## Ecosystem-based Automated Range (EBAR)

Date Generated: November 24, 2022; Version: 1.0; Stage: Expert Reviewed (National); Scope: Canadian

Synonyms Used: None



0 40 80 km

Input Records - 21 BC Non-sensitive Element Occurrences, 19 BC Vascular Plant Observations, 12 BISON, 14 ECC Critical Habitat, 83 GBIF, 2 iDigBio, 8

iNaturalist.ca, 43 iNaturalist.org; Expert Reviews - Ryan Batten

Map centre: 122.2102°W 49.8908°N

© NatureServe Canada 2020 under CC BY 4.0

EBAR is relatively coarse scale data and not intended for all applications and analysis. Please see full disclaimer in metadata.

## Ecosystem-based Automated Range (EBAR) Metadata

---

### Species

National Scientific Name:	<i>Castilleja rupicola</i> Piper ex Fern.
Scientific Name Reference:	Kartesz, J.T. 1994. A synonymized checklist of the vascular flora of the United States, Canada, and Greenland. 2nd edition. 2 vols. Timber Press, Portland, OR.
National English Name:	Cliff Paintbrush
National French Name:	Castilléjie des rochers
Element National ID:	236383
Element Global ID:	133401 ( <a href="#">go to NatureServe Explorer</a> )
Element Code:	PDSCROD2U0
Endemism Type:	N
Canadian COSEWIC Name:	
Canadian COSEWIC ID:	844

## Rank/Status

Global Rank:	G3G4 (reviewed October 17, 2006)
National Rank (Canada):	N3 (reviewed 2017)
Subnational Ranks (Canada):	BC=S3
National Rank (United States):	N3 (reviewed 2007)
Subnational Ranks (United States):	OR=S3, WA=SNR
National Rank (Mexico):	None
Subnational Ranks (Mexico):	None
Canadian SARA Status:	Threatened/Menacée (August 15, 2006)
Canadian COSEWIC Status:	Threatened (May 05, 2005)
US ESA Status:	None

## Range Map

Date Generated:	November 24, 2022
Version:	1.0
Stage:	Expert Reviewed (National)
Scope:	Canadian
Metadata:	Primary Species - <i>Castilleja rupicola</i> Piper ex Fern. Input Records - 21 BC Non-sensitive Element Occurrences, 19 BC Vascular Plant Observations, 12 BISON, 14 ECCC Critical Habitat, 83 GBIF, 2 iDigBio, 8 iNaturalist.ca, 43 iNaturalist.org; Expert Reviews - Ryan Batten
Comments:	
Disclaimer:	<p>Please review our <a href="#">methods document</a> before using EBAR.</p> <p>EBAR range data are relatively coarse scale and appropriate for screening and education purposes, but are not intended for all types of applications and analysis.</p> <p>The absence of data in any geographic areas does not necessarily mean that a species is not present.</p> <p>An ecoshape with a presence value does not necessarily mean that a species is present throughout the entire geographic area.</p>
Presence Definitions:	<p>(Please see Comments above for any exceptions)</p> <p>Present - the species is found within the ecoshape based on species observation data, Element Occurrences, Source Features, Canadian Federal Critical Habitat, or expert opinion.</p> <p>Presence Expected - expert opinion the species may be present, or the ecoshape overlapped with a range estimate or a habitat suitability model.</p> <p>Historical - all species occurrence data within the ecoshape contains observation data greater than 40 years old or an Element Occurrence (EO) that was ranked as Extirpated or Historical (EO Rank of H, H?, X or X?).</p>
Usage Type Definitions:	<p>(Please see Comments above for any exceptions)</p> <p>Breeding - the species is thought to breed within the ecoshape based on eBird Breeding and Behaviour Codes or expert opinion.</p> <p>Possible Breeding - the species is probably or possibly breeding within the ecoshape based on eBird, BBA or jurisdiction Breeding and Behaviour Codes, or on expert opinion.</p> <p>Migration - the species is thought to migrate within the ecoshape based on eBird Breeding and Behaviour Codes or expert opinion.</p>
Map Projection:	North America Albers Equal Area Conic (WKID 4269)

## Credits

**Suggested Citation:**

NatureServe Canada, 2020. Ecosystem-based Automated Range (EBAR) for *Castilleja rupicola*, Version 1.0, Expert Reviewed (National) (Canadian Scope). Ottawa, Canada. Retrieved from [insert url] on [insert date]

**License:**

Ecosystem-based Automated Range (EBAR) Project, Copyright NatureServe Canada 2022 under CC BY 4.0 ([creativecommons.org/licenses/by/4.0/](https://creativecommons.org/licenses/by/4.0/))

**Project Website:**

[www.natureserve.org/canada/ebar](http://www.natureserve.org/canada/ebar)

**Contact:**

[ebbar-kba@natureserve.ca](mailto:ebbar-kba@natureserve.ca)

**Input References:**

BC Non-sensitive Element Occurrences - British Columbia Conservation Data Centre

BC Vascular Plant Observations - British Columbia Conservation Data Centre

BISON - United States Geological Survey (<https://bison.usgs.gov/>)

ECCC Critical Habitat - Environment and Climate Change Canada

(<http://data.ec.gc.ca/data/species/protectrestore/critical-habitat-species-at-risk-canada/>)

GBIF - Global Biodiversity Information Facility (<https://www.gbif.org>)

iDigBio - Integrated Digital Biocollection (<https://www.idigbio.org/>)

iNaturalist.ca - California Academy of Sciences and the National Geographic Society (<https://www.inaturalist.ca/>)

iNaturalist.org - California Academy of Sciences and the National Geographic Society (<https://www.inaturalist.org/>)

**Reviewers by Taxa:**

[Reviewers by Taxa](#)