

Silene spaldingii

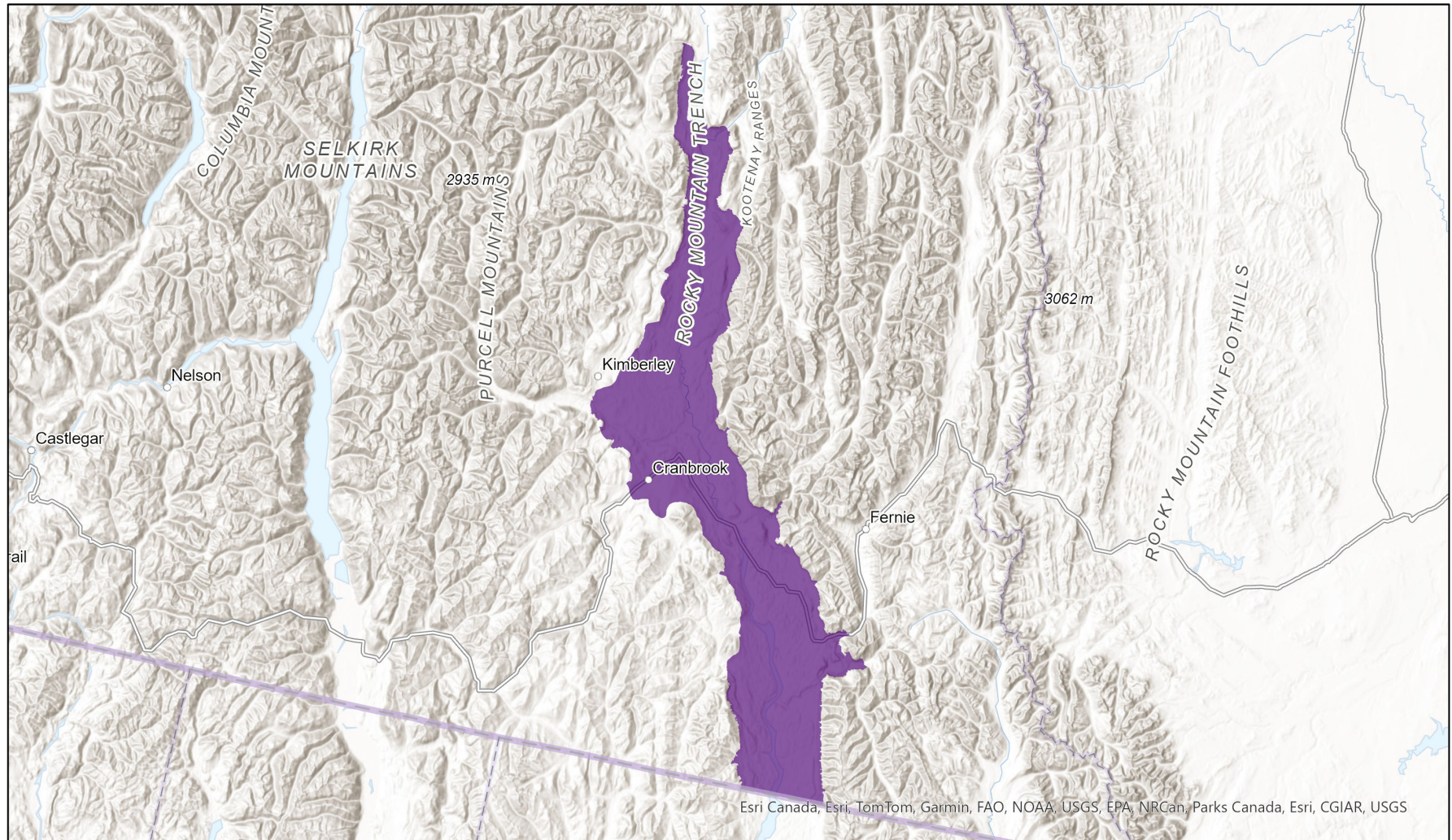
- Present
- Presence Expected
- Historical



Ecosystem-based Automated Range (EBAR)

Date Generated: November 4, 2020; Version: 1.0; Stage: Expert Reviewed; Scope: Canadian

Synonyms Used: None



0 25 50 km Input Records - 1 BC Element Occurrences, 1 BC Vascular Plant Observations, 47 ECCC Critical Habitat, 1 MT Plant Occurrences, 1 U of O Range Map Polygons; Expert Reviews - 1

Map centre: 115.5502°W 49.6477°N
© NatureServe Canada 2020 under CC BY 4.0

EBAR is relatively coarse scale data and not intended for all applications and analysis. Please see full disclaimer in metadata.

Ecosystem-based Automated Range (EBAR) Metadata

Species

National Scientific Name:	<i>Silene spaldingii</i> S. Wats.
Scientific Name Reference:	Flora of North America Editorial Committee. 2005. Flora of North America North of Mexico. Vol. 5. Magnoliophyta: Caryophyllidae: Caryophyllales, Polygonales, and Plumbaginales. Oxford Univ. Press, New York. vii + 656 pp.
National English Name:	Spalding's Campion
National French Name:	Silène de Spalding
Element National ID:	227130
Element Global ID:	132941 (go to NatureServe Explorer)
Element Code:	PDCAR0U1S0
Endemism Type:	N
Canadian COSEWIC Name:	
Canadian COSEWIC ID:	867

Rank/Status

Global Rank:	G2 (reviewed May 07, 2013)
National Rank (Canada):	N1 (reviewed 2022)
Subnational Ranks (Canada):	BC=S1
National Rank (United States):	N2 (reviewed 2013)
Subnational Ranks (United States):	ID=S1, MT=S2, OR=S2, WA=S2
National Rank (Mexico):	None
Subnational Ranks (Mexico):	None
Canadian SARA Status:	Endangered/En voie de disparition (August 15, 2006)
Canadian COSEWIC Status:	Endangered (May 05, 2005)
US ESA Status:	None

Range Map

Date Generated:	November 04, 2020
Version:	1.0
Stage:	Expert Reviewed
Scope:	Canadian
Metadata:	Primary Species Name - <i>Silene spaldingii</i> (Flora of North America Editorial Committee, 2005) Input Records - 1 BC Element Occurrences, 1 BC Vascular Plant Observations, 47 ECCC Critical Habitat, 1 MT Plant Occurrences, 1 U of O Range Map Polygons; Expert Reviews - 1
Comments:	None Please see spatial data for Ecoshape-level reviewer comments.
Disclaimer:	Please review our methods document before using EBAR. EBAR range data are relatively coarse scale and appropriate for screening and education purposes, but are not intended for all types of applications and analysis. The absence of data in any geographic areas does not necessarily mean that a species is not present. An ecoshape with a presence value does not necessarily mean that a species is present throughout the entire geographic area.
Presence Definitions:	(Please see Comments above for any exceptions) Present - the species is found within the ecoshape based on species observation data, Element Occurrences, Source Features, Canadian Federal Critical Habitat, or expert opinion. Presence Expected - expert opinion the species may be present, or the ecoshape overlapped with a range estimate or a habitat suitability model. Historical - all species occurrence data within the ecoshape contains observation data greater than 40 years old or an Element Occurrence (EO) that was ranked as Extirpated or Historical (EO Rank of H, H?, X or X?).
Usage Type Definitions:	(Please see Comments above for any exceptions) Breeding - the species is thought to breed within the ecoshape based on eBird Breeding and Behaviour Codes or expert opinion. Possible Breeding - the species is probably or possibly breeding within the ecoshape based on eBird, BBA or jurisdiction Breeding and Behaviour Codes, or on expert opinion.
Map Projection:	North America Albers Equal Area Conic (WKID 4269)

Credits

Suggested Citation:	NatureServe Canada, 2020. Ecosystem-based Automated Range (EBAR) for <i>Silene spaldingii</i> , Version 1.0, Expert Reviewed (Canadian Scope). Ottawa, Canada. Retrieved from [insert url] on [insert date]
License:	Ecosystem-based Automated Range (EBAR) Project, Copyright NatureServe Canada 2022 under CC BY 4.0 (creativecommons.org/licenses/by/4.0/)
Project Website:	www.natureserve.org/canada/ebar
Contact:	ebbar-kba@natureserve.ca
Input References:	BC Non-sensitive Element Occurrences - British Columbia Conservation Data Centre BC Vascular Plant Observations - British Columbia Conservation Data Centre ECCC Critical Habitat - Environment and Climate Change Canada MT Plant Occurrences - Montana Natural Heritage Program U of O Range Map Polygons - University of Ottawa
Reviewers by Taxa:	Reviewers by Taxa