

Brachydontium olympicum

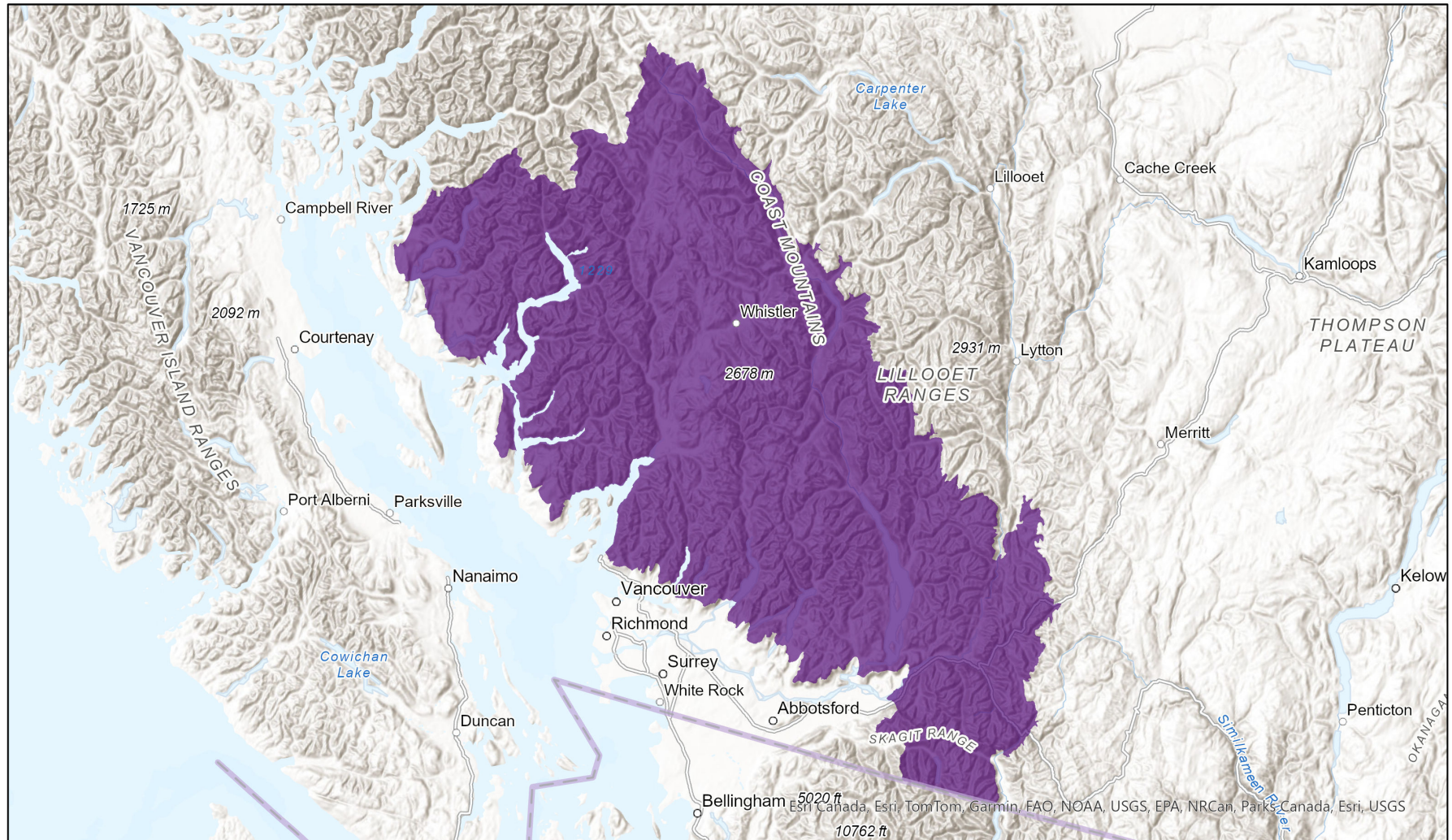


- Present
- Presence Expected
- Historical

Ecosystem-based Automated Range (EBAR)

Date Generated: November 11, 2020; Version: 1.0; Stage: Expert Reviewed; Scope: Canadian

Synonyms Used: None



0 40 80 km

Map centre: 122.8627°W 49.838°N
© NatureServe Canada 2020 under CC BY 4.0

EBAR is relatively coarse scale data and not intended for all applications and analysis. Please see full disclaimer in metadata.

Input Records - 3 BC Element Occurrences, 3 BISON, 5 GBIF, 1 iDigBio; Expert Reviews - 1

Ecosystem-based Automated Range (EBAR) Metadata

Species

National Scientific Name:	<i>Brachydontium olympicum</i> (Britt.) McIntosh & Spence
Scientific Name Reference:	Flora of North America Editorial Committee. 2007b. Flora of North America North of Mexico. Vol. 27. Bryophytes: Mosses, Part 1. Oxford University Press, New York. xxi + 713 pp.
National English Name:	Pacific Volcano Moss
National French Name:	
Element National ID:	186903
Element Global ID:	126171 (go to NatureServe Explorer)
Element Code:	NBMUS0X020
Endemism Type:	N
Canadian COSEWIC Name:	
Canadian COSEWIC ID:	

Rank/Status

Global Rank:	G2G3 (reviewed December 18, 2001)
National Rank (Canada):	N2? (reviewed 2022)
Subnational Ranks (Canada):	BC=S2?
National Rank (United States):	NNR
Subnational Ranks (United States):	AK=SNR, OR=S1, WA=S1
National Rank (Mexico):	None
Subnational Ranks (Mexico):	None
Canadian SARA Status:	None
Canadian COSEWIC Status:	None
US ESA Status:	None

Range Map

Date Generated:	November 11, 2020
Version:	1.0
Stage:	Expert Reviewed
Scope:	Canadian
Metadata:	Primary Species Name - <i>Brachydontium olympicum</i> (Flora of North America Editorial Committee, 2007) Input Records - 3 BC Element Occurrences, 3 BISON, 5 GBIF, 1 iDigBio; Expert Reviews - 1
Comments:	None Please see spatial data for Ecoshape-level reviewer comments.
Disclaimer:	Please review our methods document before using EBAR. EBAR range data are relatively coarse scale and appropriate for screening and education purposes, but are not intended for all types of applications and analysis. The absence of data in any geographic areas does not necessarily mean that a species is not present. An ecoshape with a presence value does not necessarily mean that a species is present throughout the entire geographic area.
Presence Definitions:	(Please see Comments above for any exceptions) Present - the species is found within the ecoshape based on species observation data, Element Occurrences, Source Features, Canadian Federal Critical Habitat, or expert opinion. Presence Expected - expert opinion the species may be present, or the ecoshape overlapped with a range estimate or a habitat suitability model. Historical - all species occurrence data within the ecoshape contains observation data greater than 40 years old or an Element Occurrence (EO) that was ranked as Extirpated or Historical (EO Rank of H, H?, X or X?).
Usage Type Definitions:	(Please see Comments above for any exceptions) Breeding - the species is thought to breed within the ecoshape based on eBird Breeding and Behaviour Codes or expert opinion. Possible Breeding - the species is probably or possibly breeding within the ecoshape based on eBird, BBA or jurisdiction Breeding and Behaviour Codes, or on expert opinion.
Map Projection:	North America Albers Equal Area Conic (WKID 4269)

Credits

Suggested Citation:	NatureServe Canada, 2020. Ecosystem-based Automated Range (EBAR) for <i>Brachydontium olympicum</i> , Version 1.0, Expert Reviewed (Canadian Scope). Ottawa, Canada. Retrieved from [insert url] on [insert date]
License:	Ecosystem-based Automated Range (EBAR) Project, Copyright NatureServe Canada 2022 under CC BY 4.0 (creativecommons.org/licenses/by/4.0/)
Project Website:	www.natureserve.org/canada/ebar
Contact:	ebbar-kba@natureserve.ca
Input References:	BC Non-sensitive Element Occurrences - British Columbia Conservation Data Centre BISON - United States Geological Survey GBIF - Global Biodiversity Information Facility iDigBio - Integrated Digital Biocollection
Reviewers by Taxa:	Reviewers by Taxa