

# *Bryoandersonia illecebra*

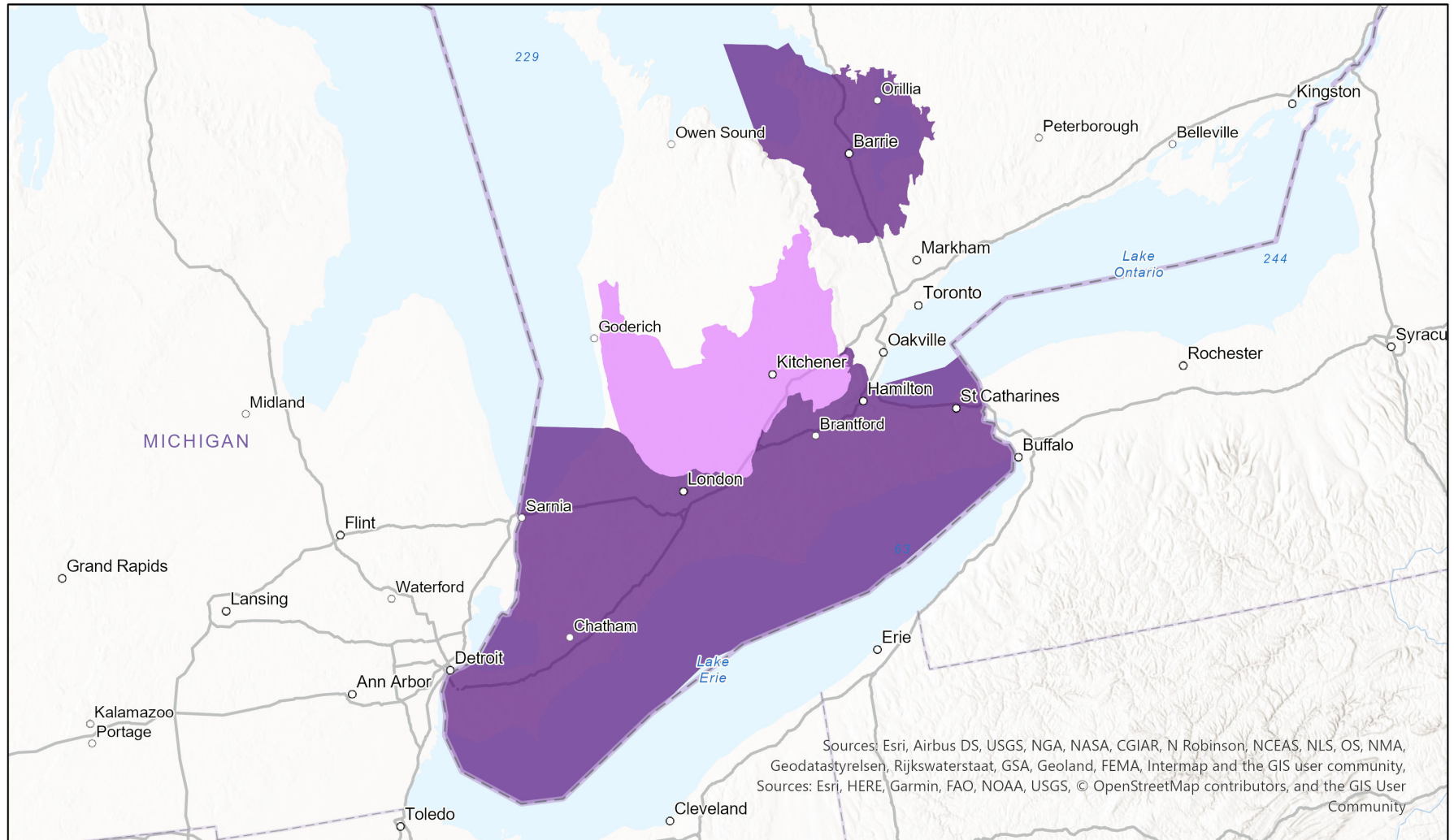


## Ecosystem-based Automated Range (EBAR)

Date Generated: March 31, 2023; Version: 1.0; Stage: Expert Reviewed (National); Scope: Canadian

Synonyms Used: None

- Present
- Presence Expected
- Historical



Sources: Esri, Airbus DS, USGS, NGA, NASA, CGIAR, N Robinson, NCEAS, NLS, OS, NMA, Geodatastyrelsen, Rijkswaterstaat, GSA, Geoland, FEMA, Intermap and the GIS user community, Sources: Esri, HERE, Garmin, FAO, NOAA, USGS, © OpenStreetMap contributors, and the GIS User Community

0 60 120 km

Input Records - 7 BISON, 23 GBIF, 1 iDigBio, 30 iNaturalist.ca, 9 ON Element Occurrences, 180 ON Observations and Source Features, 168 ON Observations not in Biotics; Expert Reviews - Nicole Fenton, 1 Anonymous

Map centre: 80.8613° W 43.2617° N  
© NatureServe Canada 2020 under CC BY 4.0

EBAR is relatively coarse scale data and not intended for all applications and analysis. Please see full disclaimer in metadata.

## Ecosystem-based Automated Range (EBAR) Metadata

---

### Species

|                            |  |
|----------------------------|--|
| National Scientific Name:  | <i>Bryoandersonia illecebra</i> (Hedw.) Robins.  |
| Scientific Name Reference: | Flora of North America Editorial Committee. 2014a. Flora of North America North of Mexico. Vol. 28. Bryophyta, Part 2. Oxford Univ. Press, New York. vii + 702 pp. |
| National English Name:     | Spoon-leaved Moss  |
| National French Name:      | Andersonie charmante   |
| Element National ID:       | 192344   |
| Element Global ID:         | 126008 ( <a href="#">go to NatureServe Explorer</a> )  |
| Element Code:              | NBMUS15010   |
| Endemism Type:             | N  |
| Canadian COSEWIC Name:     |  |
| Canadian COSEWIC ID:       | 757  |

## Rank/Status

|   |  |
|---|--|
| <b>Global Rank:</b>                       | G5 (reviewed April 18, 1991)   |
| <b>National Rank (Canada):</b>            | N2 (reviewed 2022)   |
| <b>Subnational Ranks (Canada):</b>        | ON=S2  |
| <b>National Rank (United States):</b>     | NNR  |
| <b>Subnational Ranks (United States):</b> | AL=SNR, AR=SNR, CT=SNR, DC=SNR, DE=S4, FL=SNR, GA=SNR, IA=SNR, IL=SNR, IN=SNR, KS=SNR, KY=SNR, LA=SNR, MA=SNR, MD=SNR, MI=SNR, MO=SNR, MS=SNR, NC=SNR, NJ=SNR, NY=SNR, OH=SNR, OK=SNR, PA=S5, RI=SNR, SC=SNR, TN=S3, TX=SNR, VA=SNR, VT=S1, WV=SNR |
| <b>National Rank (Mexico):</b>            | None   |
| <b>Subnational Ranks (Mexico):</b>        | None   |
| <b>Canadian SARA Status:</b>              | Threatened/Menacée (January 12, 2005)  |
| <b>Canadian COSEWIC Status:</b>           | Threatened (November 01, 2017)   |
| <b>US ESA Status:</b>                     | None   |

## Range Map

|                                |   |
|--------------------------------|---|
| <b>Date Generated:</b>         | March 31, 2023  |
| <b>Version:</b>                | 1.0   |
| <b>Stage:</b>                  | Expert Reviewed (National)  |
| <b>Scope:</b>                  | Canadian  |
| <b>Metadata:</b>               | Primary Species - <i>Bryoandersonia illecebra</i> (Hedw.) Robins.<br>Input Records - 7 BISON, 23 GBIF, 1 iDigBio, 30 iNaturalist.ca, 9 ON Element Occurrences, 180 ON Observations and Source Features, 168 ON Observations not in Biotics; Expert Reviews - Nicole Fenton, 1 Anonymous   |
| <b>Comments:</b>               | None<br><a href="#">Please see spatial data for Ecoshape-level reviewer comments.</a>   |
| <b>Disclaimer:</b>             | Please review our <a href="#">methods document</a> before using EBAR.<br><br>EBAR range data are relatively coarse scale and appropriate for screening and education purposes, but are not intended for all types of applications and analysis.<br><br>The absence of data in any geographic areas does not necessarily mean that a species is not present.<br><br>An ecoshape with a presence value does not necessarily mean that a species is present throughout the entire geographic area.   |
| <b>Presence Definitions:</b>   | (Please see Comments above for any exceptions)<br><br>Present - the species is found within the ecoshape based on species observation data, Element Occurrences, Source Features, Canadian Federal Critical Habitat, or expert opinion.<br><br>Presence Expected - expert opinion the species may be present, or the ecoshape overlapped with a range estimate or a habitat suitability model.<br><br>Historical - all species occurrence data within the ecoshape contains observation data greater than 40 years old or an Element Occurrence (EO) that was ranked as Extirpated or Historical (EO Rank of H, H?, X or X?). |
| <b>Usage Type Definitions:</b> | (Please see Comments above for any exceptions)<br><br>Breeding - the species is thought to breed within the ecoshape based on eBird Breeding and Behaviour Codes or expert opinion.<br><br>Possible Breeding - the species is probably or possibly breeding within the ecoshape based on eBird, BBA or jurisdiction Breeding and Behaviour Codes, or on expert opinion.   |
| <b>Map Projection:</b>         | North America Albers Equal Area Conic (WKID 4269)   |

## Credits

|                            |  |
|----------------------------|--|
| <b>Suggested Citation:</b> | NatureServe Canada, 2020. Ecosystem-based Automated Range (EBAR) for <i>Bryoandersonia illecebra</i> , Version 1.0, Expert Reviewed (National) (Canadian Scope). Ottawa, Canada. Retrieved from [insert url] on [insert date]  |
| <b>License:</b>            | Ecosystem-based Automated Range (EBAR) Project, Copyright NatureServe Canada 2022 under CC BY 4.0 ( <a href="https://creativecommons.org/licenses/by/4.0/">creativecommons.org/licenses/by/4.0/</a> )  |
| <b>Project Website:</b>    | <a href="http://www.natureserve.org/canada/ebar">www.natureserve.org/canada/ebar</a>   |
| <b>Contact:</b>            | <a href="mailto:ebar-kba@natureserve.ca">ebar-kba@natureserve.ca</a>   |
| <b>Input References:</b>   | BISON - United States Geological Survey ( <a href="https://bison.usgs.gov/">https://bison.usgs.gov/</a> )<br>GBIF - Global Biodiversity Information Facility ( <a href="https://www.gbif.org">https://www.gbif.org</a> )<br>iDigBio - Integrated Digital Biocollection ( <a href="https://www.idigbio.org/">https://www.idigbio.org/</a> )<br>iNaturalist.ca - California Academy of Sciences and the National Geographic Society ( <a href="https://www.inaturalist.ca/">https://www.inaturalist.ca/</a> )<br>ON Element Occurrences - Natural Heritage Information Centre, Ontario Ministry of Natural Resources and Forestry<br>ON Observations and Source Features - Natural Heritage Information Centre, Ontario Ministry of Natural Resources and Forestry<br>ON Observations not in Biotics - Natural Heritage Information Centre, Ontario Ministry of Natural Resources and Forestry |
| <b>Reviewers by Taxa:</b>  | <a href="#">Reviewers by Taxa</a>  |