

# Entosthodon rubiginosus

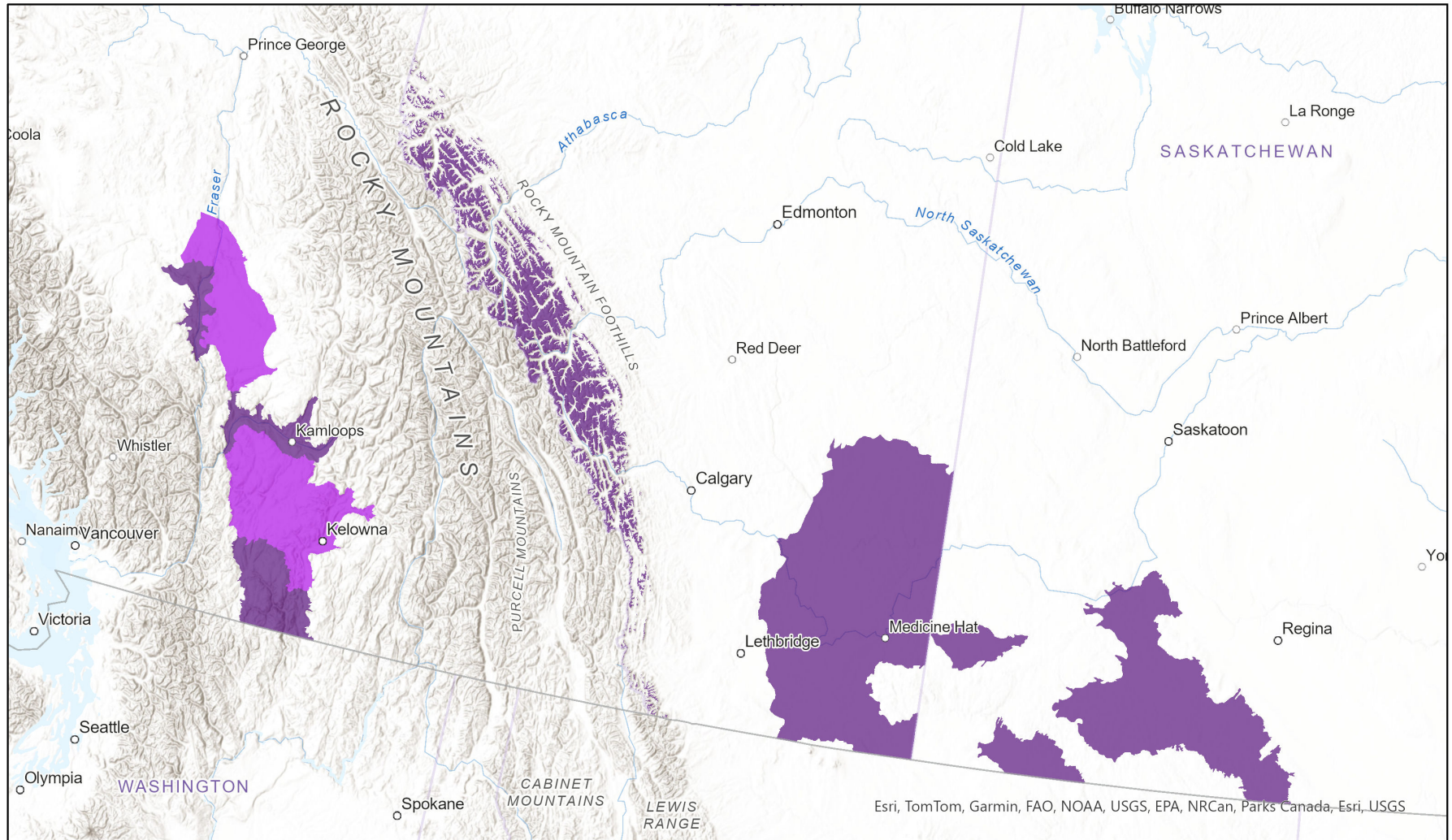


## Ecosystem-based Automated Range (EBAR)

Date Generated: March 25, 2025; Version: 1.0; Stage: Expert Reviewed (National); Scope: Canadian

Synonyms Used: None

- Present
- Presence Expected
- Historical



0 130 260 km  
Map centre: 113.6875° W 51.6975° N

© NatureServe Canada 2020 under CC BY 4.0  
EBAR is relatively coarse scale data and not intended for all applications and analysis. Please see full disclaimer in metadata.

Input Records - 1 AB Element Occurrences, 1 AB Source Feature Polygons, 10 BC Non-sensitive Element Occurrences, 13 BISON, 7 ECC Critical Habitat, 40 GBIF, 2 iDigBio, 8 Observations data from COSEWIC reports - Digitized by Hargreaves lab & WCSC, 5 SK Element Occurrences, 7 SK Source Feature Polygons; Expert Reviews - Sarah Vinge-Mazer, Ryan Batten

## Ecosystem-based Automated Range (EBAR) Metadata

---

### Species

National Scientific Name:	<i>Entosthodon rubiginosus</i> (Williams) Grout
Scientific Name Reference:	Flora of North America Editorial Committee (FNA). 2007b. Flora of North America north of Mexico. Vol. 27. Bryophytes: Mosses, Part 1. Oxford University Press, New York. xxi + 713 pp.
National English Name:	Rusty Cord-moss
National French Name:	Entosthodon rouilleux
Element National ID:	186822
Element Global ID:	125829 ( <a href="#">go to NatureServe Explorer</a> )
Element Code:	NBMUS2P080
Endemism Type:	N
Canadian COSEWIC Name:	
Canadian COSEWIC ID:	809

## Rank/Status

Global Rank:	G3 (reviewed February 21, 2025)
National Rank (Canada):	N3 (reviewed 2024)
Subnational Ranks (Canada):	BC=S3, SK=S1
National Rank (United States):	N2 (reviewed 2025)
Subnational Ranks (United States):	AZ=SNR, MT=SH, NM=SNR, TX=SNR, WA=SNR
National Rank (Mexico):	None
Subnational Ranks (Mexico):	None
Canadian SARA Status:	Endangered/En voie de disparition (August 15, 2006)
Canadian COSEWIC Status:	Special Concern (April 28, 2017)
US ESA Status:	None

## Range Map

Date Generated:	March 25, 2025
Version:	1.0
Stage:	Expert Reviewed (National)
Scope:	Canadian
Metadata:	<p>Primary Species - <i>Entosthodon rubiginosus</i> (Williams) Grout</p> <p>Input Records - 1 AB Element Occurrences, 1 AB Source Feature Polygons, 10 BC Non-sensitive Element Occurrences, 13 BISON, 7 ECCC Critical Habitat, 40 GBIF, 2 iDigBio, 8 Observations data from COSEWIC reports - Digitized by Hargreaves lab &amp; WCSC, 5 SK Element Occurrences, 7 SK Source Feature Polygons; Expert Reviews - Sarah Vinge-Mazer, Ryan Batten</p>
Comments:	<p>None</p> <p><a href="#">Please see spatial data for Ecoshape-level reviewer comments.</a></p>
Disclaimer:	<p>Please review our <a href="#">methods document</a> before using EBAR.</p> <p>EBAR range data are relatively coarse scale and appropriate for screening and education purposes, but are not intended for all types of applications and analysis.</p> <p>The absence of data in any geographic areas does not necessarily mean that a species is not present.</p> <p>An ecoshape with a presence value does not necessarily mean that a species is present throughout the entire geographic area.</p>
Presence Definitions:	<p>(Please see Comments above for any exceptions)</p> <p>Present - the species is found within the ecoshape based on species observation data, Element Occurrences, Source Features, Canadian Federal Critical Habitat, or expert opinion.</p> <p>Presence Expected - expert opinion the species may be present, or the ecoshape overlapped with a range estimate or a habitat suitability model.</p> <p>Historical - all species occurrence data within the ecoshape contains observation data greater than 40 years old or an Element Occurrence (EO) that was ranked as Extirpated or Historical (EO Rank of H, H?, X or X?), or expert opinion that the species is extirpated or historical.</p>
Usage Type Definitions:	<p>(Please see Comments above for any exceptions)</p> <p>Breeding - the species is thought to breed within the ecoshape based on eBird Breeding and Behaviour Codes or expert opinion.</p> <p>Possible Breeding - the species is probably or possibly breeding within the ecoshape based on eBird, BBA or jurisdiction Breeding and Behaviour Codes, or on expert opinion.</p>
Map Projection:	North America Albers Equal Area Conic (WKID 4269)

## Credits

Suggested Citation:	NatureServe Canada, 2020. Ecosystem-based Automated Range (EBAR) for <i>Entosthodon rubiginosus</i> , Version 1.0, Expert Reviewed (National) (Canadian Scope). Ottawa, Canada. Retrieved from [insert url] on [insert date]
License:	Ecosystem-based Automated Range (EBAR) Project, Copyright NatureServe Canada 2024 under CC BY 4.0 ( <a href="https://creativecommons.org/licenses/by/4.0/">creativecommons.org/licenses/by/4.0/</a> )
Project Website:	<a href="http://www.natureserve.org/canada/ebar">www.natureserve.org/canada/ebar</a>
Contact:	<a href="mailto:ebbar-kba@natureserve.ca">ebbar-kba@natureserve.ca</a>
Input References:	<p>AB Element Occurrences - Alberta Conservation Information Management System, Alberta Environment and Parks, Edmonton</p> <p>AB Source Feature Polygons - Alberta Conservation Information Management System, Alberta Environment and Parks, Edmonton</p> <p>BC Non-sensitive Element Occurrences - British Columbia Conservation Data Centre</p> <p>BISON - <a href="#">United States Geological Survey</a></p> <p>ECCC Critical Habitat - <a href="#">Environment and Climate Change Canada</a></p> <p>GBIF - <a href="#">Global Biodiversity Information Facility</a></p> <p>GBIF - <a href="https://doi.org/10.15468/dl.e3ax32">GBIF Occurrence Download https://doi.org/10.15468/dl.e3ax32</a> Accessed from R via <a href="#">rgbif</a> (<a href="https://github.com/ropensci/rgbif">https://github.com/ropensci/rgbif</a>) on 2024-06-21</p> <p>iDigBio - <a href="#">Integrated Digital Biocollection</a></p> <p>Observations data from COSEWIC reports - Digitized by Hargreaves lab &amp; WCSC - Observations data from COSEWIC reports - Digitized by Hargreaves lab &amp; WCSC</p> <p>SK Element Occurrences - Saskatchewan Conservation Data Centre</p> <p>SK Source Feature Polygons - Saskatchewan Conservation Data Centre</p>
Reviewers by Taxa:	<a href="#">Reviewers by Taxa</a>