

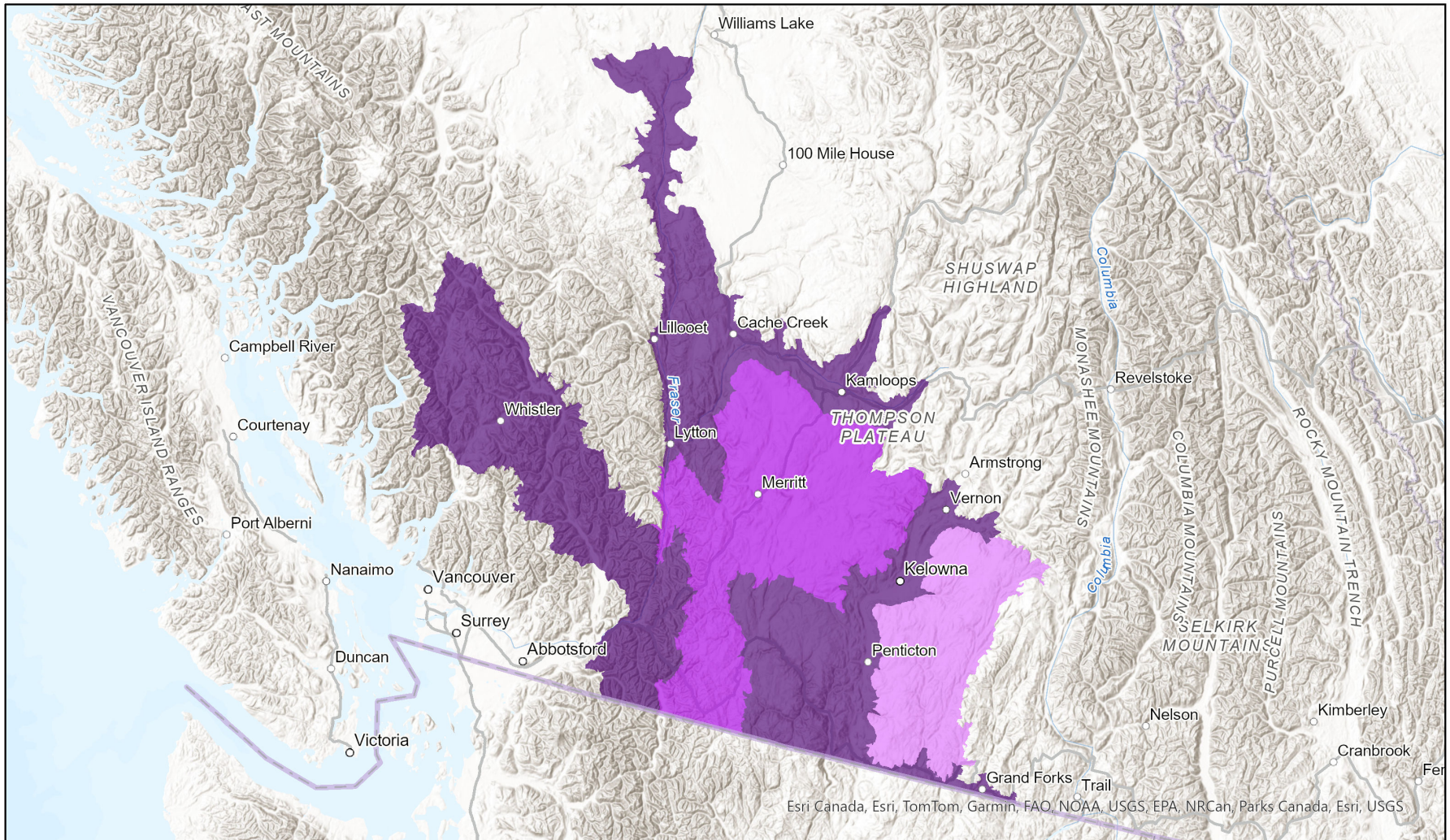
Bryoerythrophyllum columbianum



Ecosystem-based Automated Range (EBAR)

Date Generated: March 13, 2025; Version: 1.0; Stage: Expert Reviewed (National); Scope: Canadian

Synonyms Used: None



0 70 140 km
Map centre: 121.1921°W 50.3922°N
© NatureServe Canada 2020 under CC BY 4.0

EBAR is relatively coarse scale data and not intended for all applications and analysis. Please see full disclaimer in metadata.

Input Records - 17 BC Non-sensitive Element Occurrences, 5 BISON, 32 GBIF, 2 iDigBio, 14 Observations data from COSEWIC reports - Digitized by Hargreaves lab & WCSC; Expert Reviews - Ryan Batten

Ecosystem-based Automated Range (EBAR) Metadata

Species

National Scientific Name:	<i>Bryoerythrophyllum columbianum</i> (Herm. & Laut.) Zand.
Scientific Name Reference:	Flora of North America Editorial Committee (FNA). 2007b. Flora of North America north of Mexico. Vol. 27. Bryophytes: Mosses, Part 1. Oxford University Press, New York. xxi + 713 pp.
National English Name:	Columbian Carpet Moss
National French Name:	Érythrophylle du Columbia
Element National ID:	187523
Element Global ID:	125318 (go to NatureServe Explorer)
Element Code:	NBMUS18030
Endemism Type:	N
Canadian COSEWIC Name:	
Canadian COSEWIC ID:	806

Rank/Status

Global Rank:	G3G4 (reviewed May 05, 2008)
National Rank (Canada):	N3? (reviewed 2024)
Subnational Ranks (Canada):	BC=S3?
National Rank (United States):	NNR
Subnational Ranks (United States):	CA=SNR, ID=SNR, OR=S3S4, WA=S2
National Rank (Mexico):	None
Subnational Ranks (Mexico):	None
Canadian SARA Status:	Special Concern/Préoccupante (July 14, 2005)
Canadian COSEWIC Status:	Special Concern (November 28, 2014)
US ESA Status:	None

Range Map

Date Generated:	March 13, 2025
Version:	1.0
Stage:	Expert Reviewed (National)
Scope:	Canadian
Metadata:	Primary Species - <i>Bryoerythrophyllum columbianum</i> (Herm. & Laut.) Zand. Input Records - 17 BC Non-sensitive Element Occurrences, 5 BISON, 32 GBIF, 2 iDigBio, 14 Observations data from COSEWIC reports - Digitized by Hargreaves lab & WCSC; Expert Reviews - Ryan Batten
Comments:	None Please see spatial data for Ecoshape-level reviewer comments.
Disclaimer:	Please review our methods document before using EBAR. EBAR range data are relatively coarse scale and appropriate for screening and education purposes, but are not intended for all types of applications and analysis. The absence of data in any geographic areas does not necessarily mean that a species is not present. An ecoshape with a presence value does not necessarily mean that a species is present throughout the entire geographic area.
Presence Definitions:	(Please see Comments above for any exceptions) Present - the species is found within the ecoshape based on species observation data, Element Occurrences, Source Features, Canadian Federal Critical Habitat, or expert opinion. Presence Expected - expert opinion the species may be present, or the ecoshape overlapped with a range estimate or a habitat suitability model. Historical - all species occurrence data within the ecoshape contains observation data greater than 40 years old or an Element Occurrence (EO) that was ranked as Extirpated or Historical (EO Rank of H, H?, X or X?), or expert opinion that the species is extirpated or historical.
Usage Type Definitions:	(Please see Comments above for any exceptions) Breeding - the species is thought to breed within the ecoshape based on eBird Breeding and Behaviour Codes or expert opinion. Possible Breeding - the species is probably or possibly breeding within the ecoshape based on eBird, BBA or jurisdiction Breeding and Behaviour Codes, or on expert opinion.
Map Projection:	North America Albers Equal Area Conic (WKID 4269)

Credits

Suggested Citation:

NatureServe Canada, 2020. Ecosystem-based Automated Range (EBAR) for Bryoerythrophyllum columbianum, Version 1.0, Expert Reviewed (National) (Canadian Scope). Ottawa, Canada. Retrieved from [insert url] on [insert date]

License:

Ecosystem-based Automated Range (EBAR) Project, Copyright NatureServe Canada 2024 under CC BY 4.0 (creativecommons.org/licenses/by/4.0/)

Project Website:

www.natureserve.org/canada/ebars

Contact:

ebars-kba@natureserve.ca

Input References:

BC Non-sensitive Element Occurrences - British Columbia Conservation Data Centre

BISON - [United States Geological Survey](#)

GBIF - [Global Biodiversity Information Facility](#)

GBIF - [GBIF Occurrence Download https://doi.org/10.15468/dl.e3ax32](https://doi.org/10.15468/dl.e3ax32) Accessed from R via rgbif (<https://github.com/ropensci/rgbif>) on 2024-06-21

iDigBio - [Integrated Digital Biocollection](#)

Observations data from COSEWIC reports - Digitized by Hargreaves lab & WCSC - Observations data from COSEWIC reports - Digitized by Hargreaves lab & WCSC

Reviewers by Taxa:

[Reviewers by Taxa](#)