

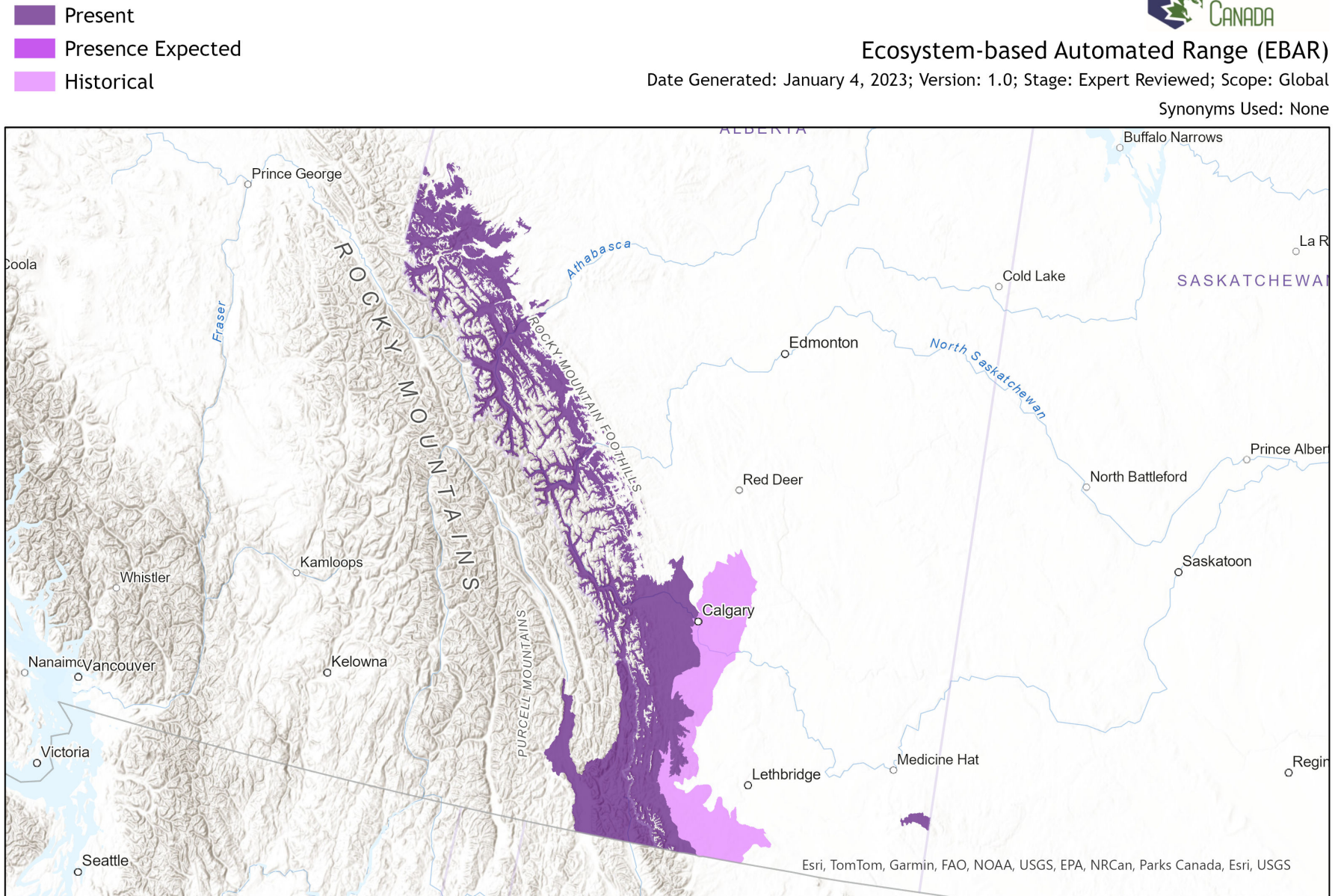
Cirsium scariosum pop. 1



Ecosystem-based Automated Range (EBAR)

Date Generated: January 4, 2023; Version: 1.0; Stage: Expert Reviewed; Scope: Global

Synonyms Used: None



0 120 240 km Input Records - 18 AB Element Occurrences, 18 AB Source Feature Polygons, 36 BC Non-sensitive Element Occurrences, 13 BC Vascular Plant Observations, 1 BISON, 28 GBIF, 12 iNaturalist.ca; Expert Reviews - Varina Crisfield

Map centre: 114.8691°W 51.9442°N
© NatureServe Canada 2020 under CC BY 4.0

EBAR is relatively coarse scale data and not intended for all applications and analysis. Please see full disclaimer in metadata.

Ecosystem-based Automated Range (EBAR) Metadata

Species

National Scientific Name:	<i>Cirsium scariosum</i> pop. 1
Scientific Name Reference:	Committee on the Status of Endangered Wildlife in Canada (COSEWIC). 2022. COSEWIC Assessment Results, May 2022. Online. Available: http://www.cosewic.ca/index.php/en-ca/assessment-process .
National English Name:	Meadow Thistle - Rocky Mountain population
National French Name:	Chardon écailleux - Population des Rocheuses
Element National ID:	1239588
Element Global ID:	1239586 (go to NatureServe Explorer)
Element Code:	PDAST2E2Q6
Endemism Type:	N
Canadian COSEWIC Name:	
Canadian COSEWIC ID:	1538

Rank/Status

Global Rank:	G5TNRQ
National Rank (Canada):	NNR
Subnational Ranks (Canada):	AB=SNR, BC=SNR
National Rank (United States):	None
Subnational Ranks (United States):	None
National Rank (Mexico):	None
Subnational Ranks (Mexico):	None
Canadian SARA Status:	None
Canadian COSEWIC Status:	Endangered (May 01, 2022)
US ESA Status:	None

Range Map

Date Generated:	January 04, 2023
Version:	1.0
Stage:	Expert Reviewed
Scope:	Global
Metadata:	Primary Species - <i>Cirsium scariosum</i> pop. 1 ; Secondary Species - <i>Cirsium scariosum</i> Nutt., <i>Cirsium scariosum</i> var. <i>scariosum</i> Input Records - 18 AB Element Occurrences, 18 AB Source Feature Polygons, 36 BC Non-sensitive Element Occurrences, 13 BC Vascular Plant Observations, 1 BISON, 28 GBIF, 12 iNaturalist.ca; Expert Reviews - Varina Crisfield
Comments:	None Please see spatial data for Ecoshape-level reviewer comments.
Disclaimer:	Please review our methods document before using EBAR. EBAR range data are relatively coarse scale and appropriate for screening and education purposes, but are not intended for all types of applications and analysis. The absence of data in any geographic areas does not necessarily mean that a species is not present. An ecoshape with a presence value does not necessarily mean that a species is present throughout the entire geographic area.
Presence Definitions:	(Please see Comments above for any exceptions) Present - the species is found within the ecoshape based on species observation data, Element Occurrences, Source Features, Canadian Federal Critical Habitat, or expert opinion. Presence Expected - expert opinion the species may be present, or the ecoshape overlapped with a range estimate or a habitat suitability model. Historical - all species occurrence data within the ecoshape contains observation data greater than 40 years old or an Element Occurrence (EO) that was ranked as Extirpated or Historical (EO Rank of H, H?, X or X?).
Usage Type Definitions:	(Please see Comments above for any exceptions) Breeding - the species is thought to breed within the ecoshape based on eBird Breeding and Behaviour Codes or expert opinion. Possible Breeding - the species is probably or possibly breeding within the ecoshape based on eBird, BBA or jurisdiction Breeding and Behaviour Codes, or on expert opinion.
Map Projection:	North America Albers Equal Area Conic (WKID 4269)

Credits

Suggested Citation:	NatureServe Canada, 2020. Ecosystem-based Automated Range (EBAR) for <i>Cirsium scariosum</i> pop. 1, Version 1.0, Expert Reviewed (Global Scope). Ottawa, Canada. Retrieved from [insert url] on [insert date]
License:	Ecosystem-based Automated Range (EBAR) Project, Copyright NatureServe Canada 2022 under CC BY 4.0 (creativecommons.org/licenses/by/4.0/)
Project Website:	www.natureserve.org/canada/ebars
Contact:	ebars-kba@natureserve.ca
Input References:	AB Element Occurrences - Alberta Conservation Information Management System, Alberta Environment and Parks, Edmonton AB Source Feature Polygons - Alberta Conservation Information Management System, Alberta Environment and Parks, Edmonton BC Non-sensitive Element Occurrences - British Columbia Conservation Data Centre BC Vascular Plant Observations - British Columbia Conservation Data Centre BISON - United States Geological Survey GBIF - Global Biodiversity Information Facility iNaturalist.ca - California Academy of Sciences and the National Geographic Society
Reviewers by Taxa:	Reviewers by Taxa